

UNEK4
AUSTRALIA

SKU: MBT-FB-1 1CW-ASMO



Fitting Instructions

Mazda BT-50 2011-2020

Crawler Bull Bar

***Australias Best Off Road Products
Created... Not Cloned***

Contents

WHY UNEEK	3
IMPORTANT INFORMATION	4
COMPONENTS AND PARTS	5
COMPONENTS AND PARTS	ERROR! BOOKMARK NOT DEFINED.
STEP 1	7
STEP 2	7
STEP 3	7
STEP 4	7
STEP 5	8
STEP 6	8
STEP 7	8
STEP 8	8
STEP 9	9
STEP 10	9
STEP 11	ERROR! BOOKMARK NOT DEFINED.
STEP 12	11
STEP 13	12
STEP 14	12
STEP 15	12
STEP 16	13
STEP 17	13
STEP 18	13
STEP 19	ERROR! BOOKMARK NOT DEFINED.
STEP 20	ERROR! BOOKMARK NOT DEFINED.
STEP 21	ERROR! BOOKMARK NOT DEFINED.
STEP 22	ERROR! BOOKMARK NOT DEFINED.
STEP 23	ERROR! BOOKMARK NOT DEFINED.
STEP 24	ERROR! BOOKMARK NOT DEFINED.
FINISHED PRODUCT	14

Why Uneek

Australian Designed and Built

All our products are designed and manufactured right here in Australia, allowing us to have better lead times and better quality control than companies manufacturing overseas. By supporting us you're supporting to grow the Australian economy and our brand.

Uneek Styling

We do not design our bars to look the same across the vehicle range. We fully develop our own product to individually suit each vehicle. We take time in designing from scratch and then test all our bars to comply with all relevant ADRs and Australian Standards.

Lightweight Through Smart Engineering

Having a steel bar doesn't mean you have to add more weight than is required to the front of your vehicle. Our engineering practises ensure we have the right protection, designed the right way to ensure protection is at its maximum and weights at its minimum.

Proven Off Road

We take our products out and test them right here in the heart of our country in our Australian conditions so we know our products can withstand anything you throw at them.

Increased Approach Angles

Our bars are designed to give you the best advantage while off road, with increased approach angles means you can tackle those tough and steep angles better than you could with the original setup or other alternatives.

Warranty

Uneek 4x4 backs itself as Australia's leading steel bull bar manufacturer. This is why we provide you with the best steel bar warranty in Australia - 5 years.

Important Information



PLEASE READ BEFORE INSTALLATION.

- When installed in accordance with these instructions, the front protection bar does not affect the operation of the vehicles SRS airbags.
- This product must be installed exactly as per these instructions using only hardware supplied.
- Take a few moments to read instructions thoroughly before beginning work.
- In the event of damage to any bar component please contact Uneek 4x4 in regards to repair/replacement of components.
- Do not use this product for any vehicle make or model other than that specified on these instructions.
- Do not remove labels from this product.
- This product and its fixings must not be modified in any way unless stated in these fitting instructions.
- The installation of this product is recommended for trained personnel.
- These instructions are correct at time of publication. Uneek 4x4 cannot be held responsible for the impact of any changes subsequently made by the vehicle manufacturer.
- During installation it is the duty of the installer to check correct operation/clearances of all components.
- Supplied tow points are designed as tow points only. Use in a recovery operation will be at operator's risk.
- Installation time: 4-5 hours.
- Vehicle specific notes: A flip up license plate kit may be required. Optional Narva 90862 license plate light.



EYE & EAR PROTECTION REQUIRED



DRILLING REQUIRED



TWO PERSON LIFT REQUIRED



TORQUE SETTING



CUTTING OR GRINDING REQUIRED

FASTENER TORQUE SETTINGS:

M6 – 9Nm (4lb ft)

M8 – 22Nm (16lb ft)

M10 – 44Nm (32lb ft)

M12 – 77Nm (57lb ft)

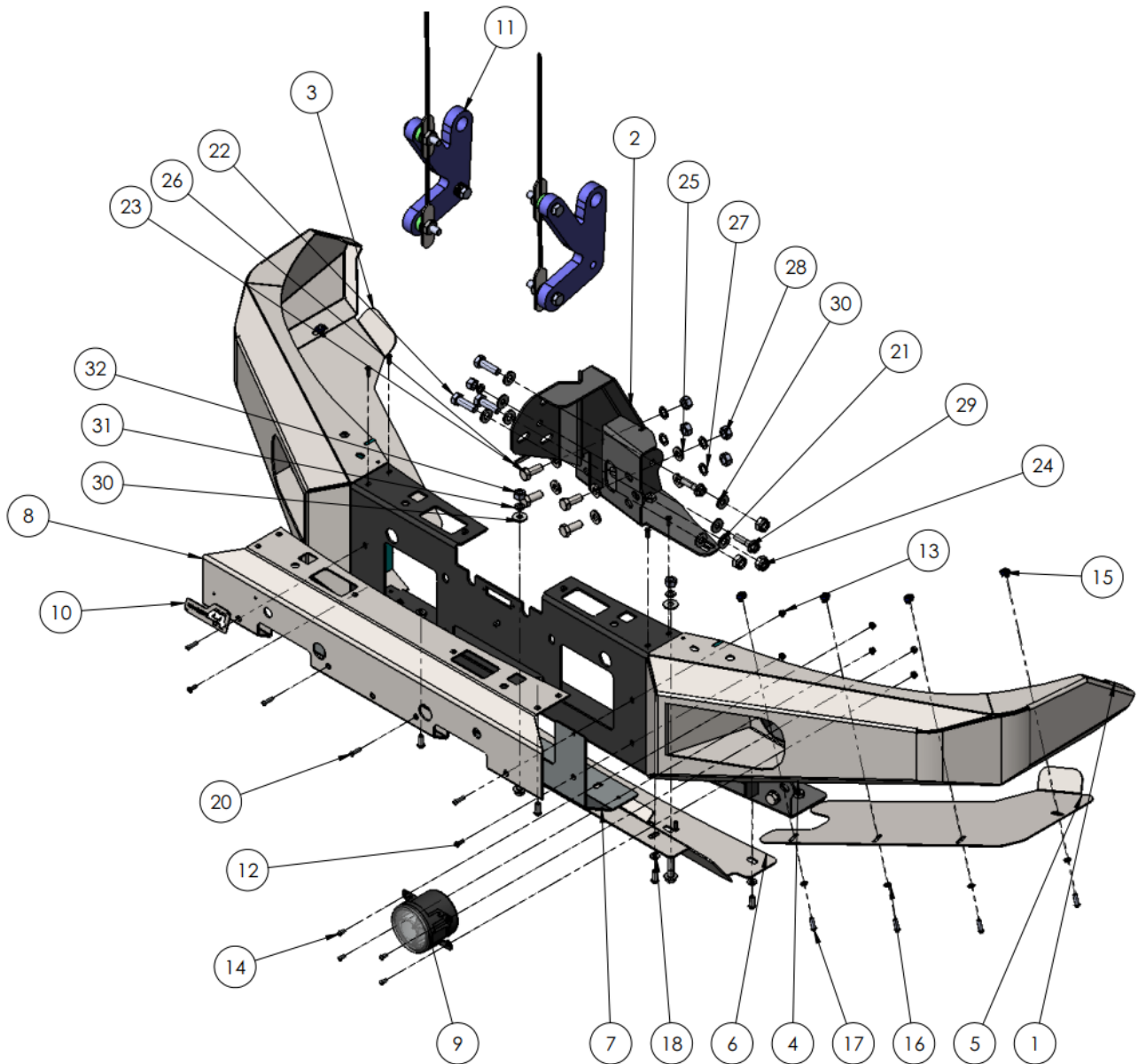
TOOLS REQUIRED:

BASIC TOOL KIT: Soldering iron or electrical in-line connectors.

Male and female spade terminals.

Drill and drill bits up to 12mm.

Components and parts



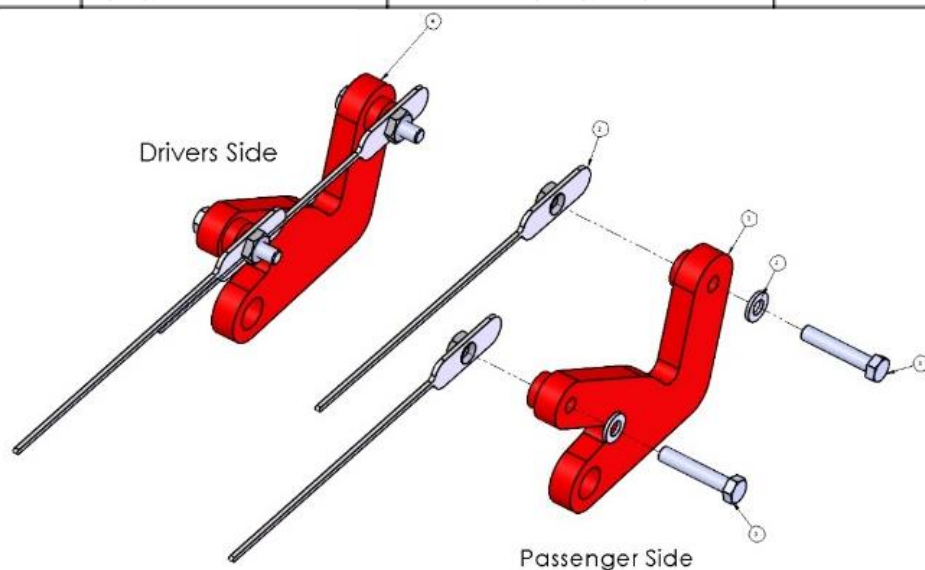
MAIN PARTS

ITEM NO.	PART NUMBER	DESCRIPTION	For Drawing/QTY.
1	MBT-FB-11CW-ASM1	BT50 Crawler	1
2	03-0318R	IMPACT ASSY CRAWLER PX RANGER	1
3	09-0176R	UNDERPANEL RHS BT-50 CRAWLER	1
4	03-0318L	IMPACT ASSY CRAWLER PX RANGER	1
5	09-0176L	UNDERPANEL LHS BT50 CRAWLER	1
6	09-0110	CENTRE PANEL ASSY PX CENTURY	1
7	09-0126	PANEL MIDDLE CENTURY NP300	1
8	09-0124	PANELL ASSY TOP NP300	1
9	CARWAY DRL	DRL FOG LIGHT	2
10	U4X4-LOGO PLATE- 1	LOGO PLATE-1	1
11	FR-RP-ASM0	FORD RANGER RECOVERY POINT KIT	1

Components and parts

BOLT KIT

ITEM NO.	PART NUMBER	DESCRIPTION	For Drawing/QTY.
12	M5X16 CS	M5 COUNTERSUNK SCREW	10
13	M5 FN	M5 FLANGE NUT	21
14	M5X10 PSCREW	M5 X 10 PH SCREW	8
15	M6 CN 3MM	CAGE NUT M6x2.6-3.5	8
16	M6 FW	FLAT WASHER 6MM	8
17	M6X20 BHCS	M6 BUTTON HEAD CAP SCREW	8
18	M8 WASHER BZP	M8 WASHER BLACK ZP	5
19	M8X20 BHCS BZP	M8X20 BUTTON HEAD CAP SCREW BLACK ZP	5
20	M5X15 PSCREW	M5 X 20 PH SCREW	5
21	M12 HD WASHER	M12 HD WASHER	12
22	M12X40X1.75	M12 X 40 X 1.75 BOLT	6
23	04-0086	ASSY M10 ROOT NUT PLATE	2
24	M12 Nyloc nut	M12 NYLOC NUT	6
25	M12 FW	M12 FLAT WASHER	16
26	M12X30X1.75	BOLT M12 1.75 PITCH	8
27	M12 SW	M12 SPRING WASHER	8
28	M12X1.75N	M12 X 1.75 NUT	8
29	M10-1.5 x 40	M10x40 HEX BOLT Z/P 8.8	6
30	M10 FLAT WASHER X 25	M10 FW	10
31	M10SW	M10 SPRING WASHER	4
32	M10X1.5N	M10 X 1.5 NUT	4



ITEM NO.	PART NUMBER	Description	QTY.
1	04-0248L	Recovery Plate ASSY Passenger Side	1
2	04-0252	NUT PLATE ASSY M12 RECOVERY	4
3	M12X65X1.75	M12 X 65MM X 1.75 BOLT	4
4	04-0248R	Recovery Plate Drivers Side	1
5	M12 HD WASHER	M12 HD WASHER	4

Step 1

Remove plastic panels under bumper, bumper, fog lights if fitted, grille and steel bumper support. Remove plastic bumper mounts from guard sections. Retain bolts from bumper support. Remove front bash plate.



Step 2

Remove any plastic air deflectors near chassis rails. Loosely fit impact absorbers to bar using original M10 bolts and supplied M12 x 40 bolts, spring washers, two small M12 flat washers per bolt and an M12 nut. Place captive nut plate through front of chassis and secure using M10 x 30 bolt, spring washer and flat washer through side of chassis.



Step 3

Measure check scale of bumper cut template to confirm scale and cut out bumper cut template.

Carefully Align bumper cut template with features in bumper as shown on template. Secure with masking tape.



Step 4

Mask and mark out Line between bottom corners of templates. If no winch is to be fitted the cut can follow contour of grille as shown.

Cut bumper along line as marked.



1 Step 5

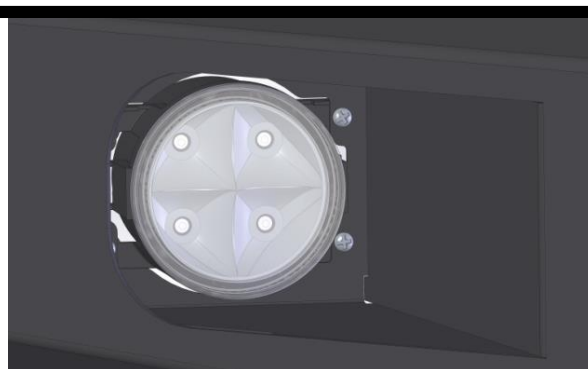
If winch is to be fitted mark cut in straight line, level with the ground between end points of template.

Cut grille as shown to allow winch to fit.



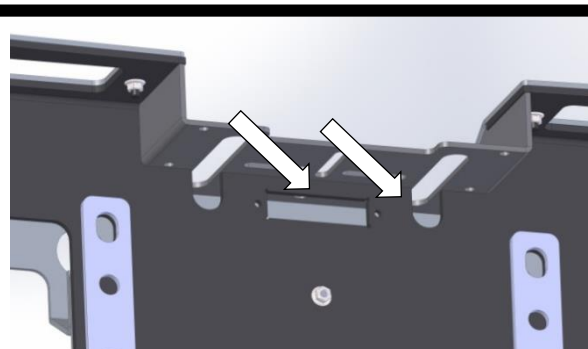
Step 6

Fit supplied fog lights to bar using M5 x 10 Phillips head screws and M5 flange nuts. If the vehicle does not have factory fog lights install the supplied wiring loom.



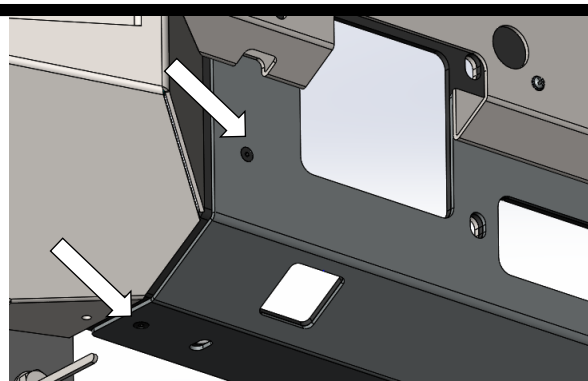
Step 7

Install optional winch light and rout cable to either side of bar. Run cable through access (arrow) hole.



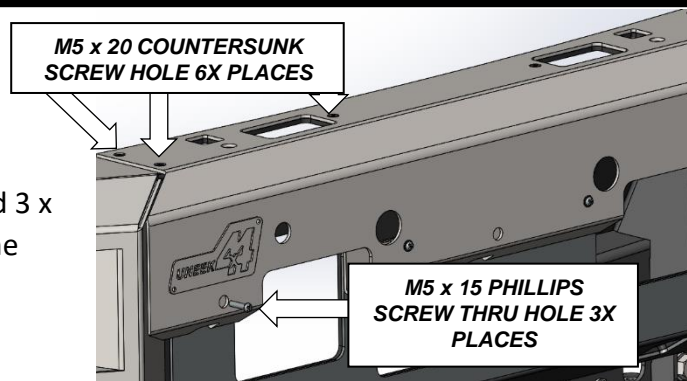
Step 8

Fit lower stainless panel to bar using 4 x M5 countersunk screws and M5 flange nuts.



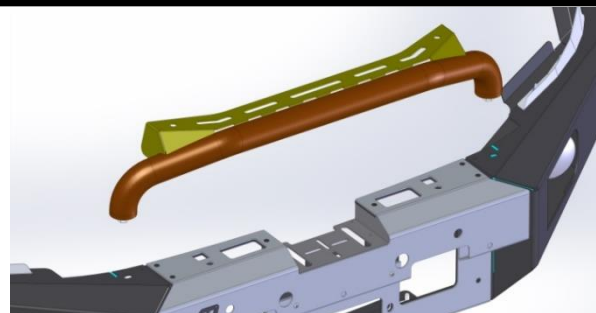
Step 9

Fit upper panel assembly using 6 x M5 countersunk screws and flange nuts and 3 x M5 x 15 Phillips head screws through the front face of panel with flange nuts.



Step 10

If fitting optional tube kit do so now to holes just outside stainless top panel.



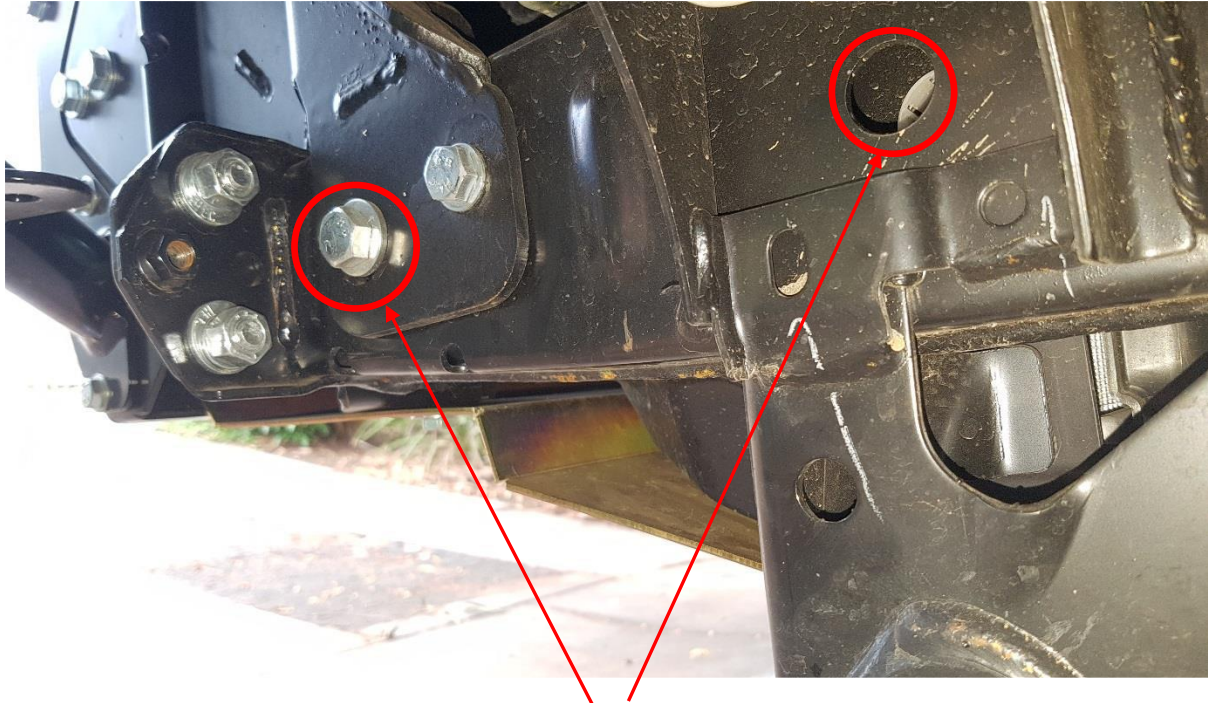
Step 11

Ensure the drivers side bracket is fitted to the drivers side of the car and vice versa.



Step 12

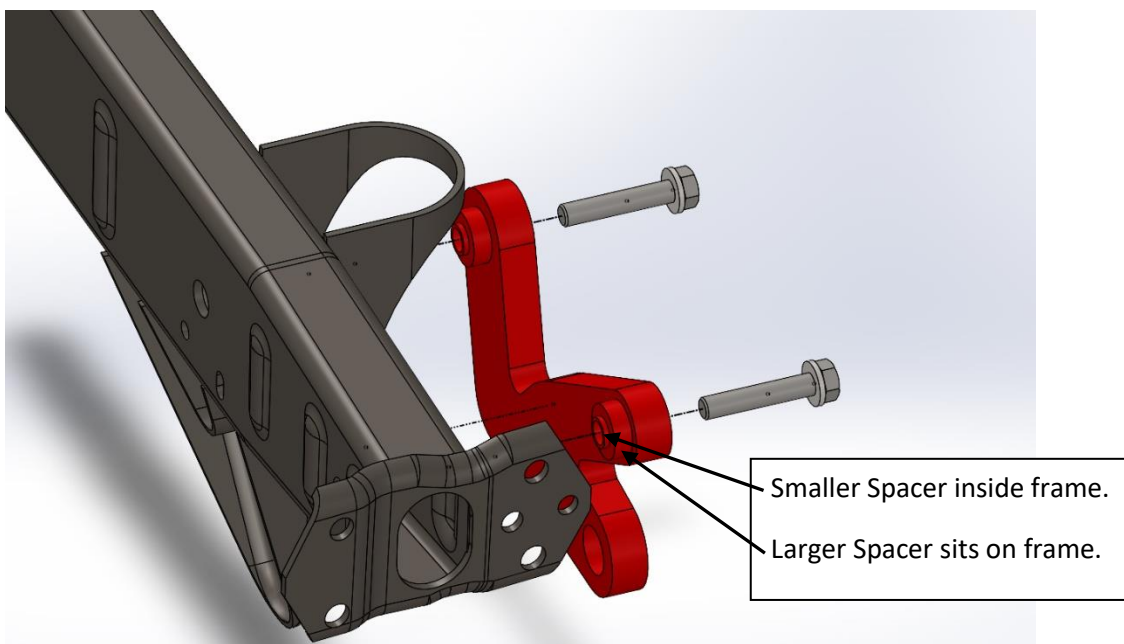
Passenger side is shown



These holes in the frame are where the recovery points bolt through.

Step 13

When fitting the recovery points the smaller locating spacer must fit inside the holes in the chassis rail. The larger spacers sit on the frame and allow the recovery points clearance.



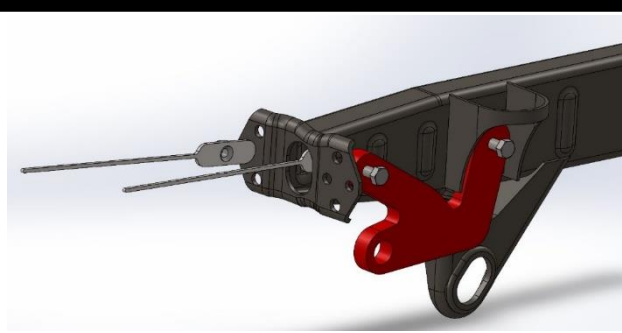
Step 14

M12 x 65 bolts go into M12 flat washer and then into the holes in chassis onto nut plates. The nut plates are inserted into the chassis rail. Ensure to snap off nut plate skewers when the bolts are torqued to the correct setting (77Nm).

HINT: Hold nut plate that sits the furthest back with a pair of vice grips whilst fitting bolt.



M12-77Nm



Step 15

Repeat the Process for the Drivers side.

Ensure that the spacers fit inside the holes in chassis rails. Failure to do so may cause incorrect loading and part failure!

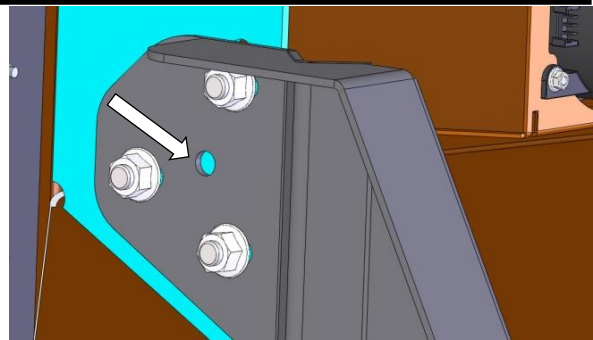
Step 16

Fit the bar to vehicle using M12 x 30 bolts, spring washers, large flat washers and M12 flange nuts through slotted holes in mounts. Adjust bar for an even fit and no less than 10mm clearance between guard and top of bar. Tighten bolts just so bar does not move.



Step 17

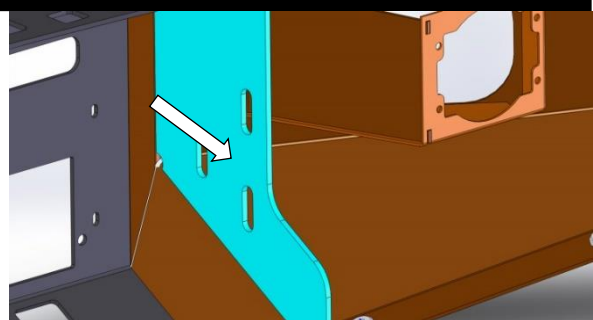
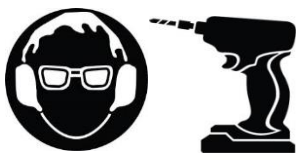
When happy with the position of the bar locate the holes in the mounting brackets that are in the middle of all the mounting bolts. Mark this hole with a white marking pen.



Location of bar will be permanent once this pinning hole is used!

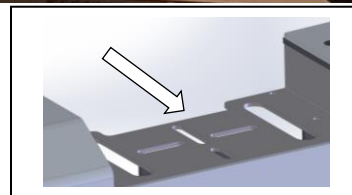
Step 18

Remove bar from vehicle and drill this marked hole out to 12mm.



Step 19

If required, fit the winch to bar making sure the clutch handle is facing forward with the winch mounting points. Fit control box to recess in bar. Before fitting bar it is recommended to paint surfaces below the lights etc satin black.



Step 20

With the help of another person lift bar into position and secure using M12 bolts, spring washers, large flat washers and M12 flange nuts to bar mounts. Insert pinning bolts lock bar in position. Finish the installation of all wiring and fit number plate.

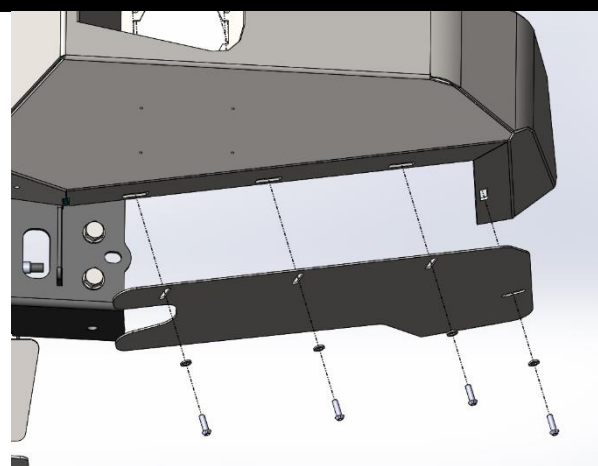


M12-77Nm M10-44Nm M6-9Nm

Step 21

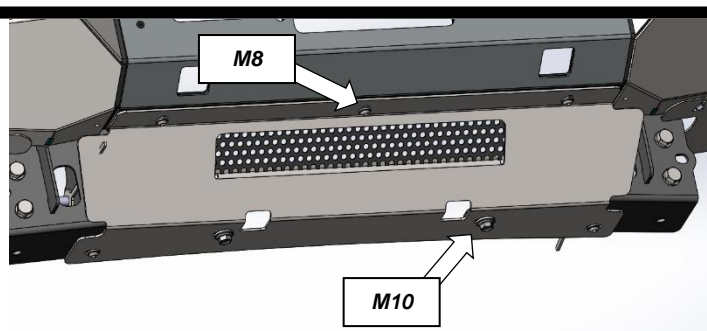
Fit M6 cage nuts to slots in lower wing. Attach outer wing guards using M6 button head cap screws and M6 flat washers.

Mark a line across plastic inner guard and cut with the same profile as the guard. Flip plastic panel over guard lip when complete.



Step 22

Fit centre panel using M8 button head cap screws (outer) and M8 washers. Re-fit factory bash plate using M10 bolts, washers and nut in the centre lower holes as shown.



Clean bar with a soft rag when complete.



Finished Product



Revised: 29/07/2021

***Australias Best
Off Road Products
Created... Not Cloned***

20 Gateway Drive, Carrum Downs, VIC, 3201

1300 806 952

www.uneek4x4.com.au

