

UNEK4
AUSTRALIA
OFF ROAD ACCESSORIES

SKU: FR-CR-ASM0



Fitting Instructions

Ford Ranger/Mazda BT50

Chase Rack

***Australia's Best Off Road Products
Created... Not Cloned***

Contents

WHY UNEEK	3
IMPORTANT INFORMATION	4
COMPONENTS AND PARTS	5
COMPONENTS AND PARTS	6
STEP 1	9
STEP 2	9
STEP 3	9
STEP 4	9
STEP 5	10
STEP 6	10
STEP 7	10
STEP 8	10
STEP 9	11
STEP 10	11
STEP 11	11
STEP 12	11
STEP 13	11
STEP 14	12
STEP 15	12
STEP 16	12
STEP 17	12
STEP 18	13
STEP 19	13
STEP 20	13
FINISHED PRODUCT	14

Why Uneek

Australian Designed and Built

All our products are designed and manufactured right here in Australia, allowing us to have better lead times and better quality control than companies manufacturing overseas. By supporting us you're supporting to grow the Australian economy and our brand.

Uneek Styling

We do not design our bars to look the same across the vehicle range. We fully develop our own product to individually suit each vehicle. We take time in designing from scratch and then test all our bars to comply with all relevant ADRs and Australian Standards.

Lightweight Through Smart Engineering

Having a steel bar doesn't mean you have to add more weight than is required to the front of your vehicle. Our engineering practises ensure we have the right protection, designed the right way to ensure protection is at its maximum and weights at its minimum.

Proven Off Road

We take our products out and test them right here in the heart of our country in our Australian conditions so we know our products can withstand anything you throw at them.

Increased Approach Angles

Our bars are designed to give you the best advantage while off road, with increased approach angles means you can tackle those tough and steep angles better than you could with the original setup or other alternatives.

Warranty

Uneek 4x4 back itself as Australia's leading steel bull bar manufacturer. This is why we provide you with the best steel bar warranty in Australia - 5 years.

Important Information



PLEASE READ BEFORE INSTALLATION.

- This product must be installed exactly as per these instructions using only hardware supplied.
- Take a few moments to read instructions thoroughly before beginning work.
- In the event of damage to any bar component please contact Uneek 4x4 in regards to repair/replacement of components.
- Do not use this product for any vehicle make or model other than that specified on these instructions.
- This product and its fixings must not be modified in any way unless stated in these fitting instructions.
- The installation of this product is recommended for trained personnel.
- These instructions are correct at time of publication. Uneek 4x4 cannot be held responsible for the impact of any changes subsequently made by the vehicle manufacturer.
- During installation it is the duty of the installer to check correct operation/clearances of all components.
- Installation time: 2-4 hours depending on options
- Roof rack is designed for 50kg dynamic loading (driving) evenly distributed and 100kg for static loading
- Tyre carrier section is designed for tyres up to 37" in diameter
- You are now completed. Remember to never travel with the tyre in the up position without support arm kits in place. If you intend on doing off-road driving, please replace hand bolts with torque down hex bolts



EYE & EAR PROTECTION REQUIRED



DRILLING REQUIRED



TWO PERSON LIFT REQUIRED



TORQUE SETTING



CUTTING OR GRINDING REQUIRED

FASTENER TORQUE SETTINGS:

M6 – 9Nm (4lb ft)

M8 – 22Nm (16lb ft)

M10 – 44Nm (32lb ft)

M12 – 77Nm (57lb ft)

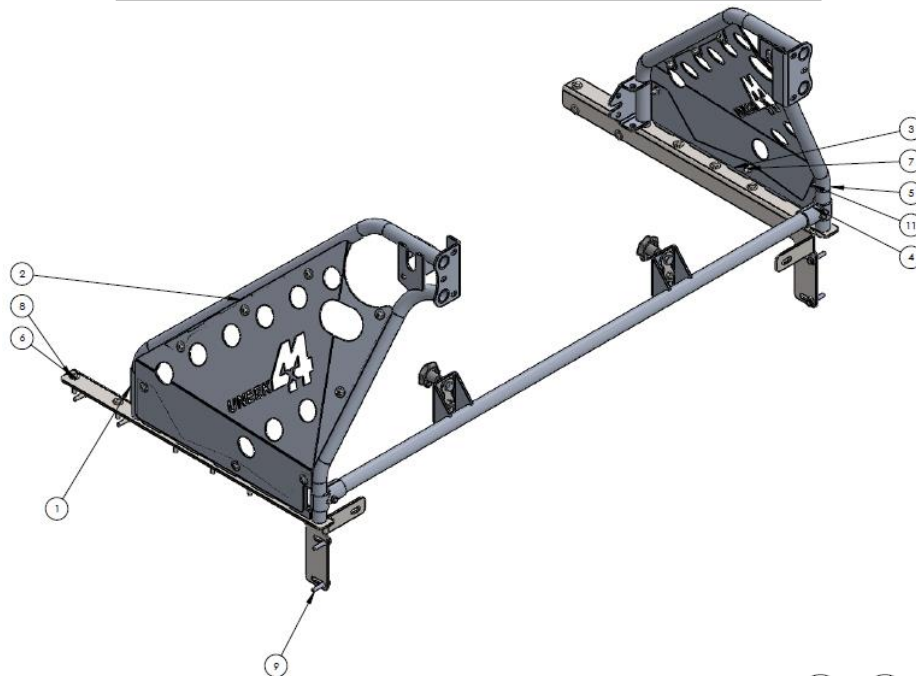
TOOLS REQUIRED:

Basic tool kit, sockets, spanners, hex keys, power drill with 5mm and 9mm drill bit, rubber mallet, centre punch, hammer.

Components and parts

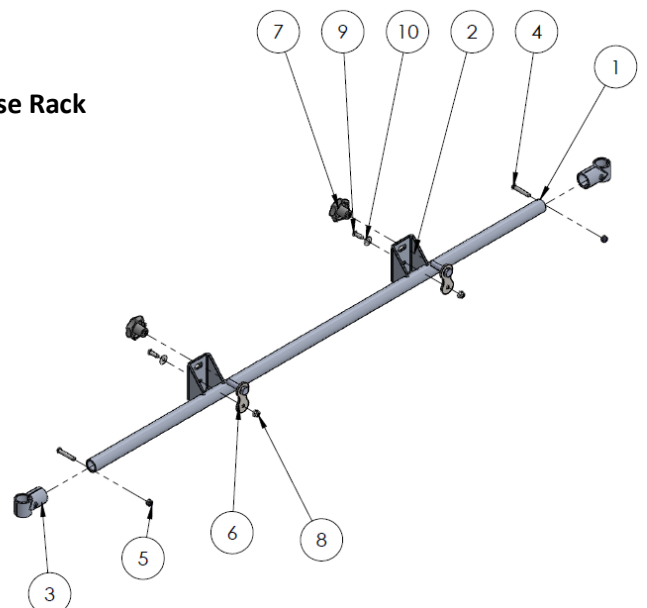
Chase Rack

ITEM NO.	PART NUMBER	DESCRIPTION	QTY.
1	FR-CR-ASM4R	Chase Rack SECTION	1
2	09-0073R	chase rack panel Rh	1
3	09-0073L	chase rack panel Rh	1
4	FR-CR-ASM8	SUPPORT TUBE ASM kit	1
5	FR-CR-ASM4L	Chase Rack SECTION	1
6	M8 FW X 22	FLAT WASHER 8MM LARGE	34
7	M8 FN	FLANGE NUT M8	31
8	M8X45 BHCS	M8X45 BUTTON HEAD CAP SCREW Z/P	14
9	M8X 25	BOLT M8 X 25	4
10	M8 SW	M8 SPRING WASHER	4
11	M8X25 BHCS	M8X25 BUTTON HEAD CAP SCREW	16



Support Tube for Chase Rack

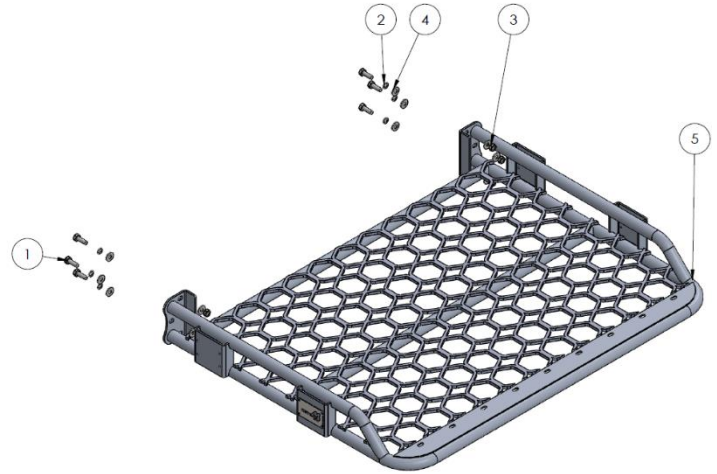
ITEM NO.	PART NUMBER	DESCRIPTION	QTY.
1	05-0201	JOINING RAIL LOWER	1
2	03-0407	HI LIFT JACK MOUNTING POINT	2
3	32mm T Clamp	T Clamp	2
4	M8X50 BHCS	M8X50 BUTTON HEAD CAP SCREW Z/P	2
5	M8 NYLOC	NYLOC SELF LOCKING NUT, ST STL A2 ISO	2
6	FR-CR-ASM7	NUT PLATE	2
7	M12 HAND KNOB NUT	M12 HAND KNOB NUT	2
8	M8 FN	FLANGE NUT M8	2
9	M8X25 BHCS	M8X25 BUTTON HEAD CAP SCREW	2
10	M8 FW X 22	FLAT WASHER 8MM LARGE	2



Components and parts

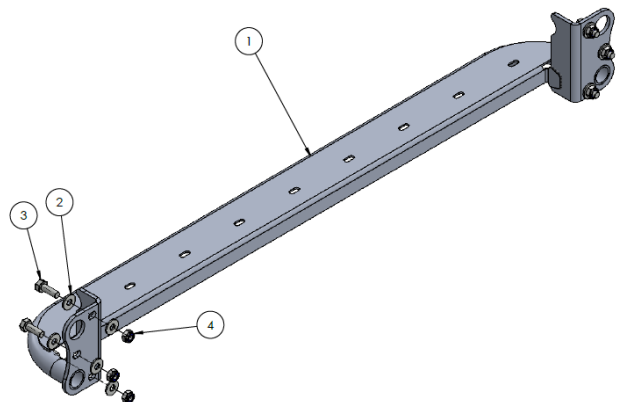
Option: Roof Rack

ITEM NO.	PART NUMBER	DESCRIPTION	QTY.
1	M10 X 30 BOLT	M10 X 30 HEX ZP 8.8	6
2	M10SW	M10 SPRING WASHER	6
3	M10X1.5N	M10 X 1.5 NUT	6
4	M10FWX25	M10 FLAT WASHER X 25MM WIDE	12
5	FR-CR-ASM2	Roof rack	1
6	JK-S-10	LOGO PLATE	2



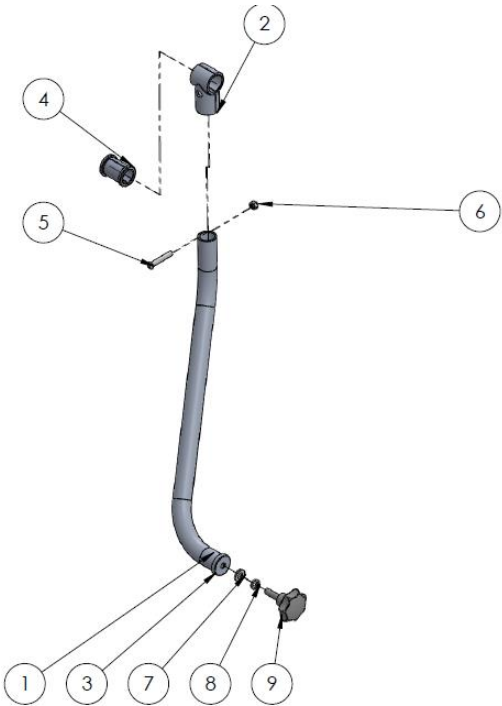
Option: Light Bar Mount

ITEM NO.	PART NUMBER	DESCRIPTION	QTY.
1	FR-CR-ASM16	NO RACK LIGHT BAR MOUNT	1
2	M10FWX25	M10 FLAT WASHER X 25MM WIDE	12
3	M10 X 30 BOLT	M10 X 30 HEX ZP 8.8	6
4	M10 NYLOC	NYLOC SELF LOCKING NUT	6



Support Arm for Tyre Carrier

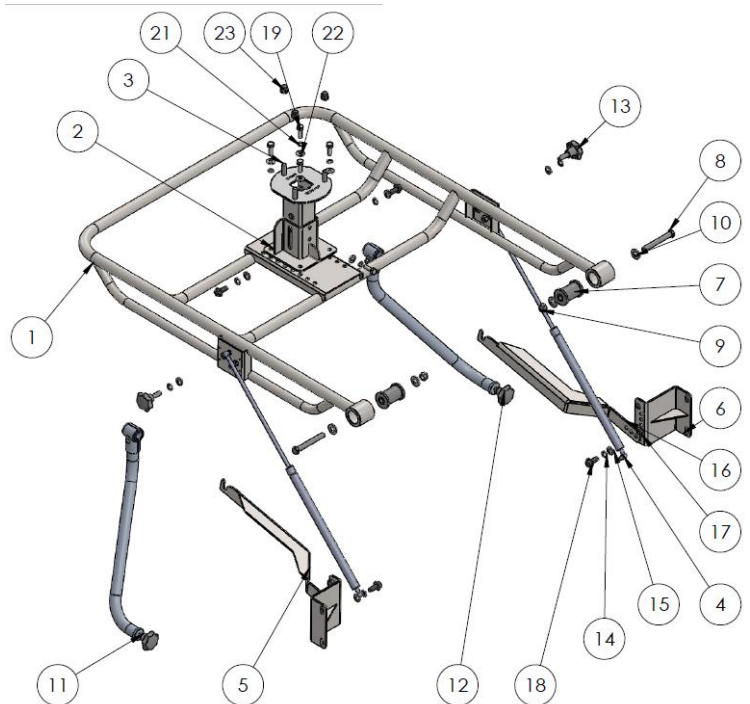
ITEM NO.	PART NUMBER	DESCRIPTION	QTY.
1	05-0197R	support tube	1
2	32mm T Clamp	T Clamp	1
3	JK-RR-16	THREADED BUNG	1
4	12-0031	CHASE RACK BUSH	1
5	M8X50 BHCS	M8X50 BUTTON HEAD CAP SCREW Z/P	1
6	M8 NYLOC	NYLOC SELF LOCKING NUT, ST STL A2 ISO	1
7	M10 HD WASHER	M10 HD WASHER Z/P	1
8	M10 SPRING WASHER	M10 SPRING WASHER	1
9	M10 Knob	M10 Knob	1



Components and parts

Tyre Carrier

ITEM NO.	PART NUMBER	DESCRIPTION	QTY.
1	FR-CR-ASM3	Rotation Rack	1
2	03-0090	BRACKET ASSY TYRE MOUNT	1
3	GU-RB-ASM4	TYRE MOUNT	1
4	GSXK28-750-500	GAS STRUT	2
5	03-0315R	secure bar	1
6	FR-CR-ASM12	LOW POSITION HOLD	2
7	SPF2670k	Super Pro 4x4 Plyurethane Bush	2
8	M14 x 110	M14 X 110 HEX BOLT, 8.8 Z/P	2
9	M14 Nyloc nut	M14 NYLOC NUT	2
10	M14 WASHER	M14 WASHER Z/P	4
11	FR-CR-ASM9R	Support ARM KIT	1
12	FR-CR-ASM9L	Support ARM KIT	1
13	M12 Knob	M12 Knob	2
14	M12 SW	M12 SPRING WASHER	6
15	M12 FW	M12 FLAT WASHER	8
16	03-0315L	secure bar	1
17	M10 NYLOC	NYLOC SELF LOCKING NUT	3
18	M12-1.75 x 30	M12x30-8.8 HEX BOLT Z/P	4
19	M10X30	M10 X 1.5 X 30MM BOLT	5
20	M10X1.5N	M10 X 1.5 NUT	5
21	M10SW	M10 SPRING WASHER	5
22	M10FWX25	M10 FLAT WASHER X 25MM WIDE	5
23	M12 X 1.25 wheel nut	M12 X 1.25 WHEEL NUT	3



Step 1

With all covers and canopies removed from the tub, sit welded chase section on to the side of the tub and fit M6 bolt on front of tub and at least 1 M8 on side of tub to locate holes for drilling.



Step 2

After each hole has been marked center punch each spot.



Step 3

It's best to start with a small pilot drill say 4-5mm and drill through each hole. Note when drilling through the top surface you will need to drill through both layers. Remember to put a layer of paint on all edges of drilled holes.



Step 4

Don't forget to drill side holes too.

Repeat for other side of tub steps 1-4.



Step 5

Feed all M8x40 bolts with washers through top surface with flange nuts on bottom. M8 x25 bolts are for the side bolts. Fit support arm with clamps as shown.



Step 6

If fitting tyre carrier ensure you now use M8 hardware to fit low position hold bracket into place as shown. If no tyre carrier fitted the M8 hardware can go directly into the vehicle through chase section. Torque up all bolts so far including M6 through front of tub.



Step 7

Bolt side panels on with button head cap screws washers and flange nuts. Torque up each bolt.



Step 8

If fitting the roof rack it is suggested to put a blanket on the roof to prevent scratches and place roof rack on top of blanket near chase sections.



Step 9

Fit roof rack or light bar mount with M10 hardware and torque up each bolt.



Step 10

If fitting a high lift jack, fit it as shown.



Step 11

If fitting tyre carrier, proceed from here on out.
Grease up bushes as shown.



Step 12

Using a mallet drive in metal boss into bush, repeat for other side.



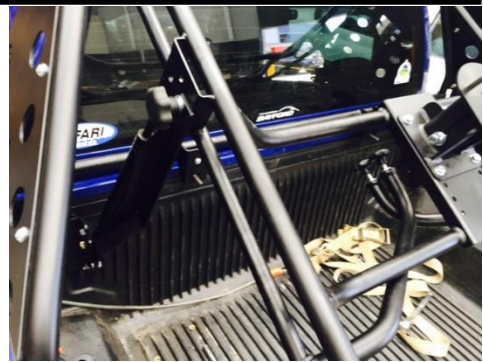
Step 13

Feed M14 bolt through chase section and through tyre carrier bush. Torque up.



Step 14

Fit secure bar arms and gas struts as shown.



Step 15

Fit support arm kits as shown LH and RH arms with plastic bush through T clamps. These should swing out when tyre carrier is in the up position and bottom of arm to connect with lower portion of chase rack. Use m10 hand knob to secure bottom section.



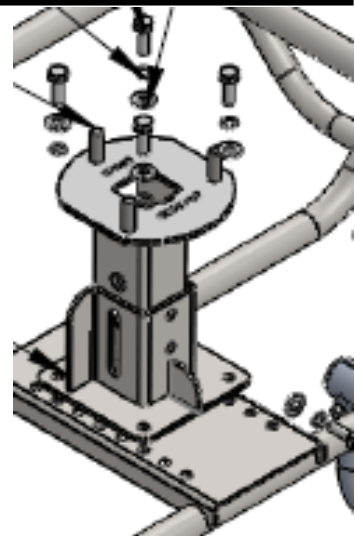
Step 16

M12 hand bolt will hold top of secure bar arms in place for lower position.



Step 17

Fit tyre carrier holder on to tyre carrier with M10 hardware. Using M12 bolts for side of holder, find position with tyre on, and nip up each bolt. Mark top holes on bracket and then remove tyre. (this is set by tyre width and rim offset. Centre punch and drill 9mm holes into bracket so M8 hardware can then secure tyre mount in place.



Step 18

Finally fit tyre to tyre carrier and tighten wheel nuts.



Step 19

You are now completed. Remember to never travel with the tyre in the up position without support arm kits in place. If you intend on doing off-road driving please replace hand bolts with torque down hex bolts.



Step 20

Up position shown with support arm kit in place.



Finished Product



Revised: 07/05/2020

***Australia's Best
Off Road Products
Created... Not Cloned***

20 Gateway Drive, Carrum Downs, VIC, 3201

1800 806 952

www.uneek4x4.com.au

