

**UNEK4**  
**A U S T R A L I A**  
**OFF ROAD ACCESSORIES**

**SKU: HC/ID-FB-1 1X-ASM0**



## ***Fitting Instructions***

**Holden Colorado/7 - Isuzu Dmax  
2011-2016**

**Classic and Urban Bull Bar**

**Australia's Best Off Road Products  
Created... Not Cloned**

# Contents

---

<b>WHY UNEEK</b>	<b>3</b>
<b>IMPORTANT INFORMATION</b>	<b>4</b>
<b>COMPONENTS AND PARTS</b>	<b>5</b>
<b>PLEASE NOTE:</b>	<b>6</b>
<b>STEP 1</b>	<b>7</b>
<b>STEP 2</b>	<b>7</b>
<b>STEP 3</b>	<b>7</b>
<b>STEP 4</b>	<b>7</b>
<b>STEP 5</b>	<b>8</b>
<b>STEP 6</b>	<b>8</b>
<b>STEP 7</b>	<b>8</b>
<b>STEP 8</b>	<b>8</b>
<b>STEP 9</b>	<b>9</b>
<b>STEP 10</b>	<b>9</b>
<b>STEP 11</b>	<b>9</b>
<b>STEP 12</b>	<b>9</b>
<b>STEP 13</b>	<b>10</b>
<b>STEP 14</b>	<b>10</b>
<b>STEP 15</b>	<b>10</b>
<b>STEP 16</b>	<b>10</b>
<b>FINISHED PRODUCT</b>	<b>11</b>

# ***Why Uneek***

---

## ***Australian Designed and Built***

All our products are designed and manufactured right here in Australia, allowing us to have better lead times and better quality control than companies manufacturing overseas. By supporting us you're supporting to grow the Australian economy and our brand.

## ***Uneek Styling***

We do not design our bars to look the same across the vehicle range. We fully develop our own product to individually suit each vehicle. We take time in designing from scratch and then test all our bars to comply with all relevant ADRs and Australian Standards.

## ***Lightweight Through Smart Engineering***

Having a steel bar doesn't mean you have to add more weight than is required to the front of your vehicle. Our engineering practises ensure we have the right protection, designed the right way to ensure protection is at its maximum and weights at its minimum.

## ***Proven Off Road***

We take our products out and test them right here in the heart of our country in our Australian conditions so we know our products can withstand anything you throw at them.

## ***Increased Approach Angles***

Our bars are designed to give you the best advantage while off road, with increased approach angles means you can tackle those tough and steep angles better than you could with the original setup or other alternatives.

## ***Warranty***

Uneek 4x4 back itself as Australia's leading steel bull bar manufacturer. This is why we provide you with the best steel bar warranty in Australia - 5 years.

# Important Information

---



## PLEASE READ BEFORE INSTALLATION

- When installed in accordance with these instructions, the front protection bar does not affect the operation of the vehicles SRS airbags.
- This product must be installed exactly as per these instructions using only hardware supplied.
- Take a few moments to read instructions thoroughly before beginning work.
- In the event of damage to any bar component please contact Uneek 4x4 in regards to repair/replacement of components.
- Do not use this product for any vehicle make or model other than that specified on these instructions.
- Do not remove labels from this product.
- This product and its fixings must not be modified in any way unless stated in these fitting instructions.
- The installation of this product is recommended for trained personnel.
- These instructions are correct at time of publication. Uneek 4x4 cannot be held responsible for the impact of any changes subsequently made by the vehicle manufacturer.
- During installation it is the duty of the installer to check correct operation/clearances of all components.
- Supplied tow points are designed as tow points only. Use in a recovery operation will be at operator's risk.
- Installation time: 4 hours.
- Vehicle specific notes: A flip up license plate kit may be required. Optional Narva 90862 license plate light.



### EYE & EAR PROTECTION REQUIRED



### DRILLING REQUIRED



### TWO PERSON LIFT REQUIRED



### TORQUE SETTING



### CUTTING OR GRINDING REQUIRED

#### FASTENER TORQUE SETTINGS:

M6 – 9Nm (4lb ft)

M8 – 22Nm (16lb ft)

M10 – 44Nm (32lb ft)

M12 – 77Nm (57lb ft)

#### TOOLS REQUIRED:

BASIC TOOL KIT: Soldering iron or electrical in-line connectors.

Male and female spade terminals. Jigsaw or air hacksaw.

# Components and parts

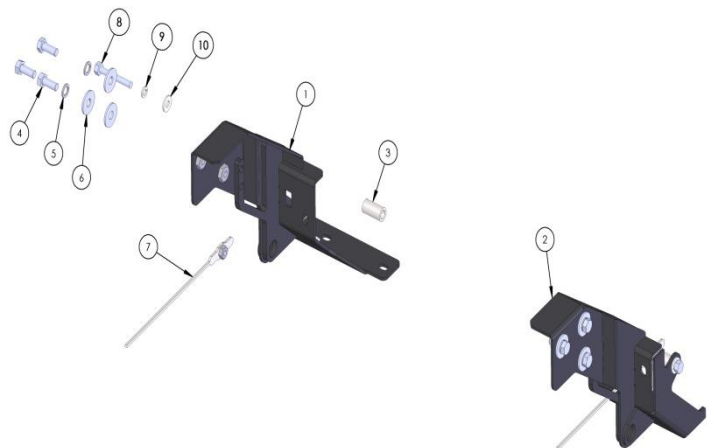
ITEM NO.	PART NUMBER	DESCRIPTION	QTY.
1	HC-FB-11C-AMS1 OR ID-FB-11C-ASM1	HOLDEN COLORADO OR DMAX WELDED ASSY	1
2	09-0090	PANEL ASSY CENTER DMAX	1
3	AUTO 8 LED	LED INDICATOR/PARKER	2
4	CARWAY LED	FOG DRL LIGHT	2
5	12-0010	COVER PC FOG LIGHT	2
6	M5X10 PSCREW	M5 X 10 PH SCREW	6
7	M8X25 BHCS	M8 BUTTON HEAD CAP SCREW	13
8	M8 FW X 22	FLAT WASHER 8MM LARGE	13
9	M6X20	M6 X 20 BOLT	2
10	M6 FW	M6 FLAT WASHER	2
11	M6 FN	FLANGE NUT M6	2
12	09-0086R	PANEL OUTER DMAX	1
13	09-0086L	PANEL OUTER DMAX	1
14	M5X15 PSCREW	M5 X 15 PH SCREW	8
15	M10X30	M10 X 1.5 X 30MM BOLT	3
16	M10FWX25	M10 FLAT WASHER X 25MM WIDE	3



ITEM NO.	PART NUMBER	DESCRIPTION	QTY.
1	HC-FB-11U-AMS1 OR ID-FB-11U-ASM1	HOLDEN COLORADO OR DMAX WELDED ASSY URBAN	1
2	09-0090	PANEL ASSY CENTER DMAX	1
3	AUTO 8 LED	LED INDICATOR/PARKER	2
4	CARWAY LED	FOG DRL LIGHT	2
5	12-0010	COVER PC FOG LIGHT	2
6	M5X10 PSCREW	M5 X 10 PH SCREW	6
7	M8X25 BHCS	M8 BUTTON HEAD CAP SCREW	13
8	M8 FW X 22	FLAT WASHER 8MM LARGE	13
9	M6X20	M6 X 20 BOLT	2
10	M6 FW	M6 FLAT WASHER	2
11	M6 FN	FLANGE NUT M6	2
12	09-0086L	PANEL OUTER DMAX	1
13	09-0086R	PANEL OUTER DMAX	1
14	M5X15 PSCREW	M5 X 15 PH SCREW	8
15	M10X30	M10 X 1.5 X 30MM BOLT	3
16	M10FWX25	M10 FLAT WASHER X 25MM WIDE	3

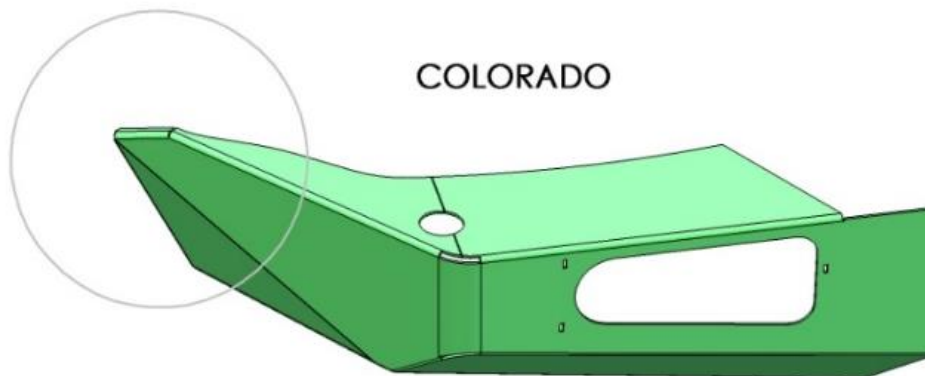
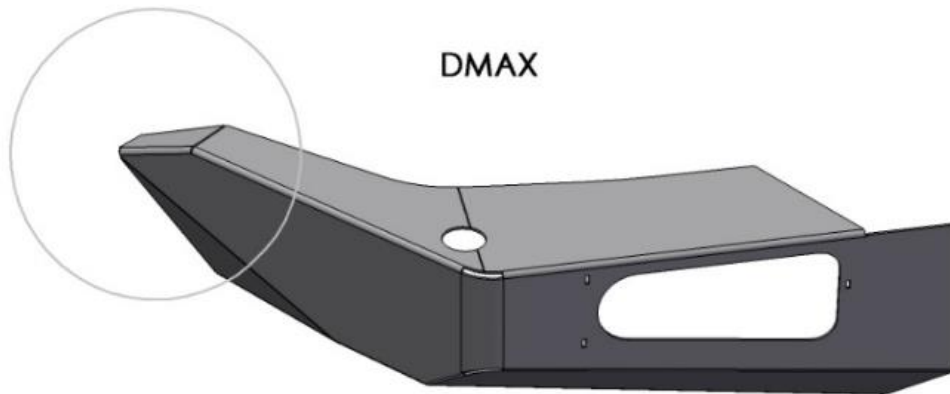


ITEM NO.	PART NUMBER	DESCRIPTION	QTY.
1	03-0288R	IMPACT ASSY DMAX	1
2	03-0288L	IMPACT ASSY DMAX	1
3	05-0150	SPACER CHASSIS MOUNT DMAX	2
4	M12X30X1.75	M12 X 30MM X 1.75 BOLT	6
5	M12 SW	M12 SPRING WASHER	6
6	M12 FW X 37	M12 FLAT WASHER X 37	6
7	04-0113	NUT PLATE ASSY M10	2
8	M10x1.5X70	M10 X 1.5 X 70MM BOLT	2
9	M10SW	M10 SPRING WASHER	2
10	M10FWX25	M10 FLAT WASHER X 25MM WIDE	2



## **Please Note:**

Please note the following differences between the Colorado and DMAX wings.



---

## Step 1

Remove plastic panels under bumper, bumper, fog lights if fitted, grille and lower steel bumper support (retain bolts) on DMAX or Colorado. Retain bolts from bumper support. Remove front steel bash plate and retain rear bolts only.



---

## Step 2

Cut supplied indicator/parker light wires in half. Locate park, indicator and earth on vehicle lights and attach wires that were cut using soldering iron or Narva 56015BL connectors. Once this is done attach female spade terminals to other end of wires. Re-fit headlights if removed.



---

## Step 3

Locate on both Colorado and DMAX, the two crossmembers that have a tie down point. Remove and retain all front bolts. Loosen rear bolts off only.



---

## Step 4

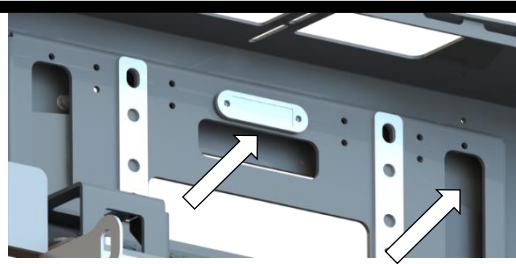
Place impact absorbers loosely on chassis and mark plastic air dams to trim. Only enough clearance for impact absorber is required.





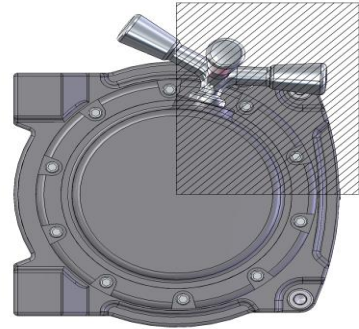
## Step 5

**Bar preparation.** Install optional winch light and route cable to either side of bar. Run cable through access (arrow) hole and cable tie to holes provided.



## Step 6

If fitting a winch do so now. The clutch handle will need to be positioned in an area as shown.



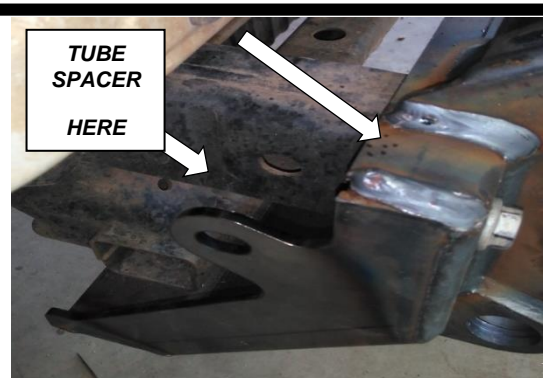
## Step 7

Fit supplied fog light and park/indicator to bar. The fog lights will use the longer M5 fasteners supplied in the bar fitting kit. **DO NOT USE SUPPLIED FASTENERS IN FOG LIGHT BOX.** Fit centre tube to bar using M12 socket head cap screws and spring washers.



## Step 8

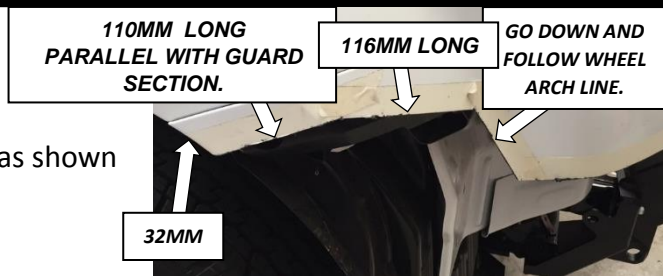
Place captive nut plate into centre hole of chassis flange for both sides. Nut in plate is to face outwards. Slide impact absorbers over the tail of nut plate and onto flange. Make sure the crossmember with tie down is under lower lip of impact absorber. Secure loosely with original bolts. Place spacer tube in area shown. Secure to nut plate using M10 x 70 bolt, spring washer and flat washer. Tighten all bolts when done including crossmember.





## Step 9

**DMAX bumper cut.** Mark outer sections as shown in image.



## Step 10

Once these marks have been done draw a line from outer points in a straight line to centre point. Cover upper section with masking tape to protect paint. Using a grinder or air hacksaw cut bumper. Clean and de-burr when done. Place grille back onto vehicle.



## Step 11

**Colorado.** Mark a position from top edge of LOWER grille 90mm down. Mask (upper edge of cut) the plastic bumper as per the white lines shown in image starting at the arrow which is the corner point where it joins to the steel guard. Cut and de-burr. Fit back to vehicle.



## Step 12

Both models. Using masking tape cover the outer steel guards on the Colorado. With the assistance of another person lift bar into place and loosely secure using M12 x 30 bolts, spring washers and flat washers. Adjust the bar for even gaps. Tighten all bolts when done.



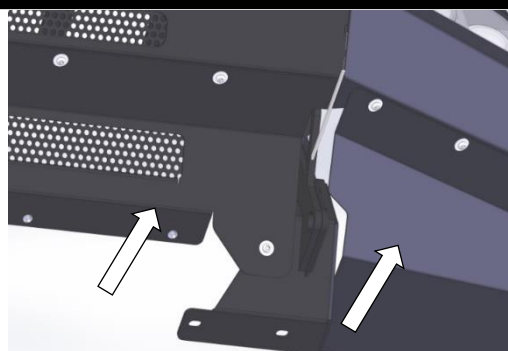
## Step 13

Complete the wiring of winch and any other accessory.



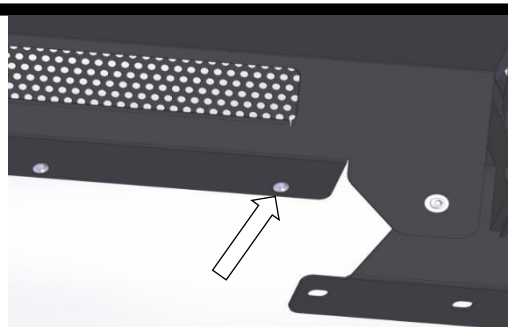
## Step 14

Fit middle and outer stone guards using M8 button head screws and large M8 washers. Cut wheel arch liner in line with outer stone guard. When done place plastic liner over the lip of outer stone guards.



## Step 15

Fit original bash plates back to vehicle using M10 x 30 bolts and M10 flat washers. Front plate will bolt to the captive nut locations in centre stone tray of bar.



## Step 16

Remove any tape from vehicle and clean. Fit license plate to vehicle.



# ***Finished Product***

---



Revised: 25/07/2019

***Australia's Best  
Off Road Products  
Created... Not Cloned***

20 Gateway Drive, Carrum Downs, VIC, 3201

1800 806 952

[www.uneek4x4.com.au](http://www.uneek4x4.com.au)

