

UNEK4
AUSTRALIA
OFF ROAD ACCESSORIES

SKU: TH-FB-21CW-ASM0



Fitting Instructions

Toyota Hilux 2021 on

Crawler Bullbar

Australia's Best Off Road Products
Created... Not Cloned

Contents

WHY UNEEK	3
IMPORTANT INFORMATION	4
COMPONENTS AND PARTS	5
STEP 1	7
STEP 2	7
STEP 3	7
STEP 4	8
STEP 5	8
STEP 6	8
STEP 7	9
STEP 8	9
STEP 9	9
STEP 10	10
STEP 11	10
STEP 12	10
STEP 13	10
STEP 14	11
STEP 15	11
STEP 16	11
STEP 17	12
STEP 18	12
STEP 19	12
STEP 20	13
STEP 21	13
STEP 22	14
STEP 23	14
FINISHED PRODUCT	15

Why Uneek

Australian Designed and Built

All our products are designed and manufactured right here in Australia, allowing us to have better lead times and better-quality control than companies manufacturing overseas. By supporting us you're supporting to grow the Australian economy and our brand.

Uneek Styling

We do not design our bars to look the same across the vehicle range. We fully develop our own product to individually suit each vehicle. We take time in designing from scratch and then test all our bars to comply with all relevant ADRs and Australian Standards.

Lightweight Through Smart Engineering

Having a steel bar doesn't mean you have to add more weight than is required to the front of your vehicle. Our engineering practises ensure we have the right protection, designed the right way to ensure protection is at its maximum and weights at its minimum.

Proven Off Road

We take our products out and test them right here in the heart of our country in our Australian conditions so we know our products can withstand anything you throw at them.

Increased Approach Angles

Our bars are designed to give you the best advantage while off road, with increased approach angles means you can tackle those tough and steep angles better than you could with the original setup or other alternatives.

Warranty

Uneek 4x4 backs itself as Australia's leading steel bull bar manufacturer. This is why we provide you with the best steel bar warranty in Australia - 5 years.

Important Information



PLEASE READ BEFORE INSTALLATION.

- When installed in accordance with these instructions, the front protection bar does not affect the operation of the vehicles SRS airbags.
- This product must be installed exactly as per these instructions using only hardware supplied.
- Take a few moments to read instructions thoroughly before beginning work.
- In the event of damage to any bar component please contact Uneek 4x4 in regard to repair/replacement of components.
- Do not use this product for any vehicle make or model other than that specified on these instructions.
- Do not remove labels from this product.
- This product and its fixings must not be modified in any way unless stated in these fitting instructions.
- The installation of this product is recommended for trained personnel.
- These instructions are correct at time of publication. Uneek 4x4 cannot be held responsible for the impact of any changes subsequently made by the vehicle manufacturer.
- During installation it is the duty of the installer to check correct operation/clearances of all components.
- Supplied tow points are designed as tow points only. Use in a recovery operation will be at operator's risk.
- Installation time: 3-4 hours.
- Vehicle specific notes: A flip up license plate kit may be required. Optional Narva 90862 license plate light.



EYE & EAR PROTECTION REQUIRED



DRILLING REQUIRED



TWO PERSON LIFT REQUIRED



TORQUE SETTING



CUTTING OR GRINDING REQUIRED

FASTENER TORQUE SETTINGS:

M6 – 9Nm (4lb ft)

M8 – 22Nm (16lb ft)

M10 – 44Nm (32lb ft)

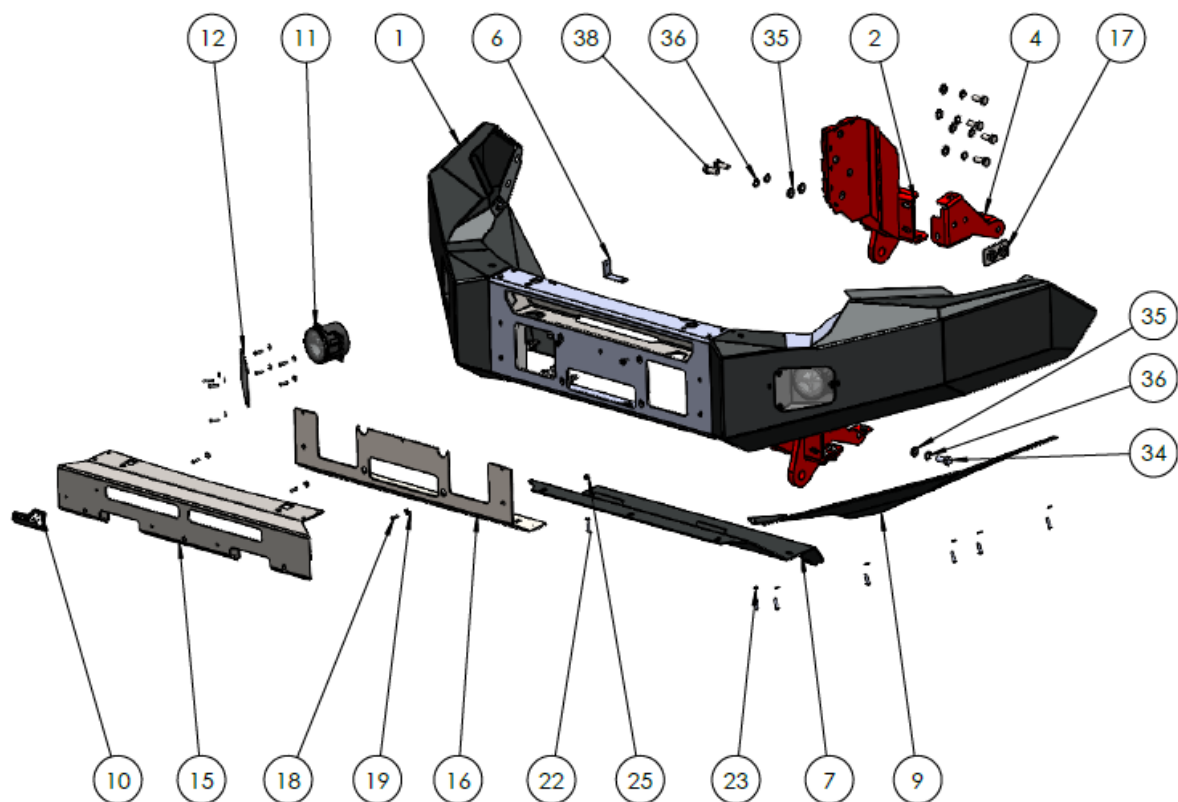
M12 – 77Nm (57lb ft)

BASIC TOOL KIT WITH SOCKETS, SPANNERS AND HEX KEYS, Power drill with 5mm and 9mm drill bit, rubber mallet, centre punch, hammer.

Components and parts

MAIN COMPONENTS

ITEM NO.	PART NUMBER	DESCRIPTION	QTY.
1	TH-FB-21CW-ASM1	TOYOTA HILUX MY21 CRAWLER BAR WELDED ASM	1
2	03-0888R	HILUX CRAWL MOUNT BRACKET ASM RH	1
3	03-0888L	HILUX CRAWL MOUNT BRACKET ASM LH	1
4	03-0892R	HLUX CRAWL MOUNT BRACKET D RH	1
5	03-0892L	HILUX CRAWL MOUNT BRACKET D LH	1
6	03-0893	GRILL SUPPORT BRACKET CENTRE	1
7	09-0222	HILUX MY 21 CRAWLER BASH PLATE	1
8	09-0221R	HLUX CRAWL UNDER WING PANNEL RH	1
9	09-0221L	HILUX CRAWL UNDER WING PANEL LH	1
10	U LOGO PLATE BLACK	LOGO PLATE-1	1
11	CARWAY DRL	DRL FOG LIGHT	2
12	12-0026	COVER PC FOG LIGHT CENTURY	2
13	09-0223-MS	UPPER FASCIA M/S LB	1
14	09-0224-MS	LOWER FASCIA M/S LB	1



OPTIONAL COMPONENTS

ITEM NO.	PART NUMBER	DESCRIPTION	QTY.
15	09-0223	UPPER FASCIA STAINLESS LB	1
16	09-0224	LOWER FASCIA STAINLESS LB	1

FASTNERS

ITEM NO.	PART NUMBER	DESCRIPTION	QTY.
17	03-0422	2015 HILUX NUT PLATE ASSEMBLY	2
18	M5X20 PSCREW	M5 X 20 PH SCREW	19
19	M5 WASHER	M5 washer	19
20	M5 FN	M5 FLANGE NUT	21
21	M5X16 CS	M5 COUNTERSUNK SCREW	8
22	M6 x 25 BHCS	M6 X 25 BHCS	14
23	M6 FLAT WASHER	M6 FLAT WASHER	14
24	M6 CN 2MM	CAGE NUT M6x1.7-2.7	12
25	M6 FLANGE NUT	M6 FLANGE NUT	2
26	M8X20 BHCS BZP	M8X20 BUTTON HEAD CAP SCREW	5
27	M8 FW X 22	FLAT WASHER 8MM LARGE	5
28	M8 SW	M8 SPRING WASHER	5
29	M8 FN	FLANGE NUT M8	2
30	M10 X 30 BOLT	M10 X 30 HEX ZP 8.8	4
31	M10SW	M10 SPRING WASHER	4
32	M10 FLAT WASHER X 25	M10 FW	4
33	M10 FN	M10 Flange nut	4
34	M12X30X1.25	M12 X 30 X 1.25 FINE PITCH BOLT	2
35	M12 FW	M12 FLAT WASHER	20
36	M12 SW	M12 SPRING WASHER	20
37	M12 X 1.75 FN	M12 FLANGE NUT	6
38	M12X30X1.75	BOLT M12 1.75 PITCH	18

Step 1

- Test drive vehicle to ensure all driver assists are correctly working and to gauge effectiveness. Park on a flat level surface.
- Apply parking brake and lift bonnet.
- Unwrap bar and disconnect mounts. Discard bolts.
- Ensure these instructions are left with the vehicle owner and/or operator.



Step 2

- Remove eight (8) push/pull clips from top radiator trim.
- Remove trim.
- Disconnect sonar unit behind badge in grille.



Step 3

- Remove four (4) 10mm head bolts from top of grille.

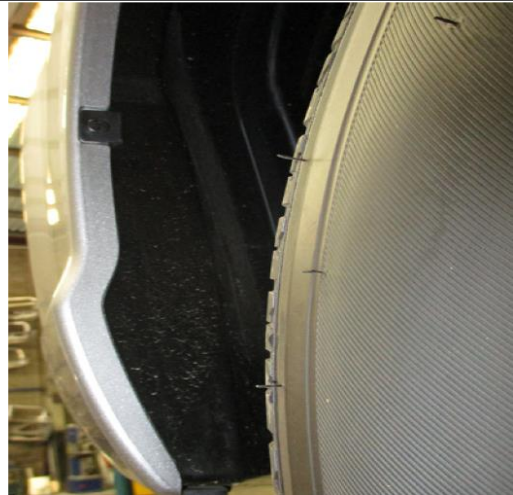
NOTE: Grille clips on bottom of bumper are difficult to get to. By releasing side of grille, you can get to bolts in top of bumper, then remove grille with bumper.

- Unplug camera from back of badge if applicable to your vehicle.
- Pull forward on sides of grille to release clips at headlight level.



Step 4

- In front of wheel arch, remove one (1) small push pull clip and one (1) screw clip from rear of bumper skin.



Step 5

- From underside of bumper, remove three (3) 10mm head screws into guard liner (per side).
- In center of bumper, remove three (3) 10mm head bolts from bumper to underbelly guards.
- Unclip bumper from inner guards and pull sides of bumper away from vehicle to unclip from guards.
- Disconnect Bumper lights and sensors (if fitted).



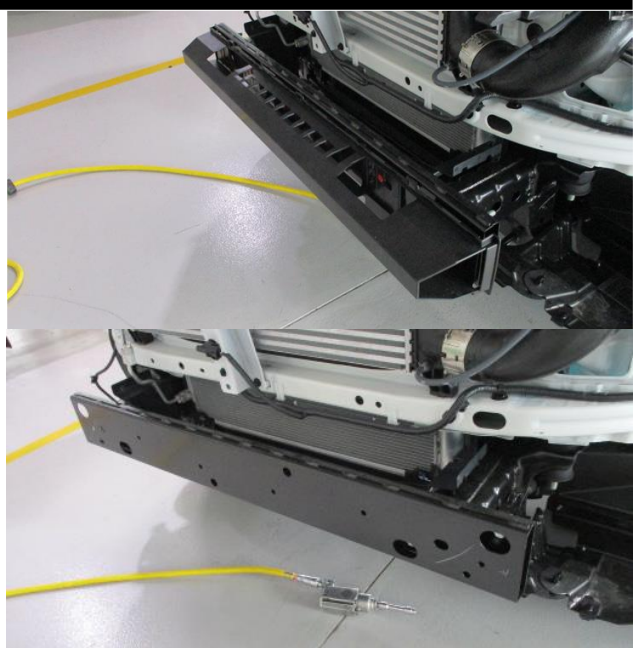
Step 6

- From behind grille, remove three (3) 10mm head bolts.
- Pull bumper forward from under headlights to remove.



Step 7

- With a firm tug, remove plastic from front of bumper support.
- Remove bumper support, four (4) 14mm head bolts. Retain these bolts.



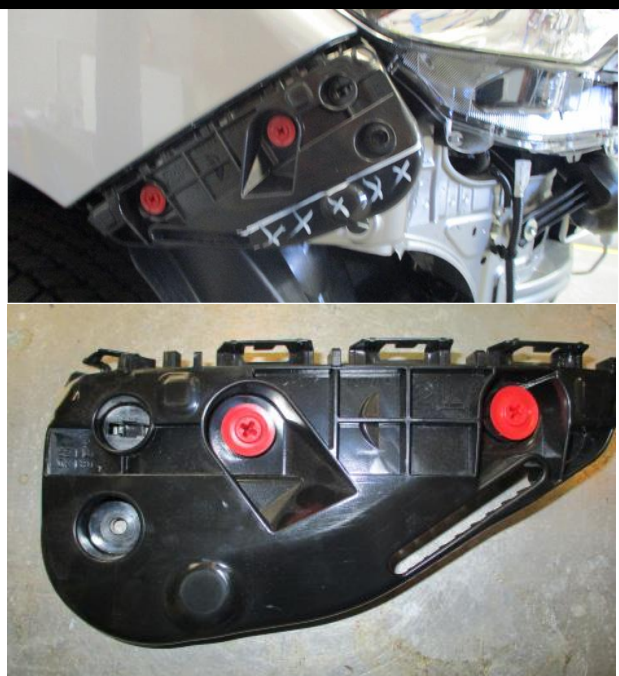
Step 8

- Remove plastic trim from front of bash plate.



Step 9

- Remove bumper retainers from guards per/side.
- One screw and two red push/pull clips.



Step 10

- Mask off headlight and guard edge that could be seen between bar edge and body and paint black.



Step 11

- If fitting winch, remove temperature sensor from bonnet lock support and relocate to left hand side of radiator support.
- Zip tie is required.



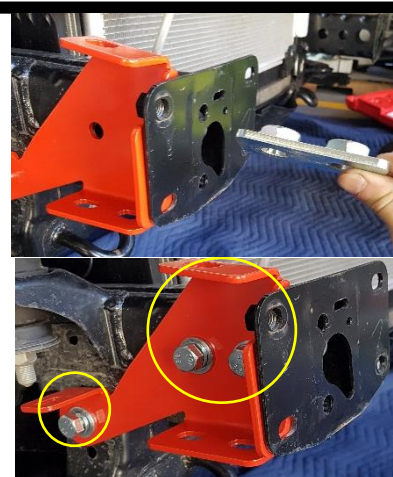
Step 12

- Hold chassis mount into position.
- Mark and trim air dam to fit around mount.



Step 13

- Fit chassis brace to the outside each side of chassis as shown.
- Use M12 fine thread and washer into rear captive nut.
- Use M12 cores thread bolt and washers into provided nut plate
- Do not tighten at this stage.



Step 14

- Fit red chassis mount to each chassis rail end.
- Flange to the outside, fix with original bolts into captive nuts on front plate.
- Use M10 bolts, flat washers, and flange nuts in other front holes.
- In all other holes use M12 course thread bolts, flat washers, and flange nuts.
- Centralize mounts and tighten all bolts.



Step 15

- Mark and cut grille as shown.



Step 16

- Fit the provided L shaped bracket with OEM screws to fasten the grille.
- To avoid rattling of the grille use cable ties on the two bottom corners to secure it well.
- Refit grille to vehicle using original equipment.



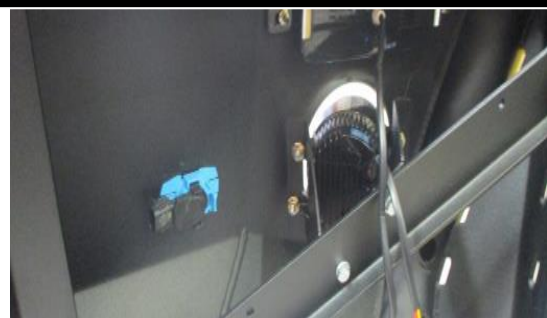
Step 17

- If fitting a winch to the bar, bolt it from the inside prior to bar installation on the car.



Step 18

- Remove wiring, sensors and housing from bumper and relocate behind protection bar and glue with Loctite 454 supplied.
- Fit the provided carway foglights with M5 screws, washers and flange nuts.



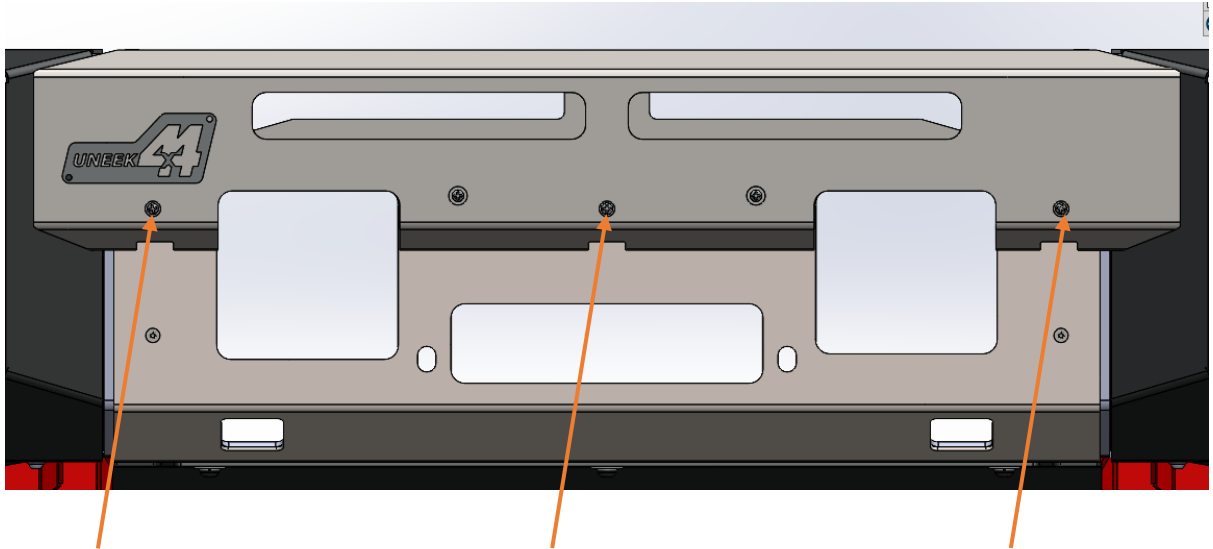
Step 19

- With help from an assistant.
- Lift bar onto mounts.
- Adjust bar left or right to achieve symmetrical fit.
- Torque mount to chassis bolts (M12 bolts, washers, and spring washers).
- Adjust bar for best fit on vehicle.
- Aim for approximately 20mm between bar end and guard, 15mm gap under headlights.



Step 20

- Fit the two front fascia panel using m5 countersunk bolts and flange nuts.
- Use 3 Phillips head m5 bolts, washers, and flange nuts in the middle of the fascia panels.



Step 21

- Fit wing under panels using M6 bolts, flat washers and cage nuts installed in the underwing panel.
- Using the outer panel as a guide, mark along the wheel arch guard and cut and tuck behind the underwing panel.



Step 22

- Install the stone guard using three m8 bolts, washers under the bottom fascia.
- Use two m6 bolts, washers, and flange nuts in the middle two holes and two OEM bolts near the bash plate.



Step 23

- Fit the fog lights covers on the bar using m5 screws and washers.
- Clean the bar



Finished Product



Revised: 25/06/22

***Australia's Best
Off Road Products
Created... Not Cloned***

49 Pacific Drive, Keysborough, VIC, 3173

1300 806 952

www.uneek4x4.com.au

