

**UNEK4**  
AUSTRALIA  
OFF ROAD ACCESSORIES

**SKU: ID-FB-21CW-ASM0**



## ***Fitting Instructions***

***Isuzu DMAX 2021***

***Crawler Bar***

***Australia's Best Off Road Products  
Created... Not Cloned***

# Contents

---

<b>WHY UNEEK</b>	<b>3</b>
<b>IMPORTANT INFORMATION</b>	<b>4</b>
<b>COMPONENTS AND PARTS</b>	<b>5</b>
<b>STEP 1: REMOVE RADIATOR TRIM</b>	<b>8</b>
<b>STEP 2: REMOVE TOP GRILLE</b>	<b>8</b>
<b>STEP 3: REMOVE CLIPS ON TOP OF BUMPER</b>	<b>8</b>
<b>STEP 4: WING BOLTS</b>	<b>8</b>
<b>STEP 5: GUARD SPLASH GUARD</b>	<b>9</b>
<b>STEP 6 REMOVING THE BUMPER</b>	<b>9</b>
<b>STEP 7: UNDERBELLY GUARD</b>	<b>9</b>
<b>STEP 8: CROSS BRACE REMOVAL</b>	<b>9</b>
<b>STEP 9: AIR DAMS</b>	<b>10</b>
<b>STEP 10: INSTALL MOUNTS</b>	<b>10</b>
<b>STEP 11: STABILIZER MOUNTS</b>	<b>11</b>
<b>STEP 12: BUMPER CLIPS</b>	<b>11</b>
<b>STEP 13: LIGHT FITMENT</b>	<b>12</b>
<b>STEP 14: BAR FITMENT</b>	<b>12</b>
<b>STEP 15: HEADLIGHT INFILL</b>	<b>12</b>
<b>STEP 17: UNDER BODYGUARDS</b>	<b>13</b>
<b>STEP 18: TRIM INNER GUARDS</b>	<b>13</b>
<b>FINISHED PRODUCT</b>	<b>14</b>

# ***Why Uneek***

---

## ***Australian Designed and Built***

All our products are designed and manufactured right here in Australia, allowing us to have better lead times and better-quality control than companies manufacturing overseas. By supporting us you're supporting to grow the Australian economy and our brand.

## ***Uneek Styling***

We do not design our bars to look the same across the vehicle range. We fully develop our own product to individually suit each vehicle. We take time in designing from scratch and then test all our bars to comply with all relevant ADRs and Australian Standards.

## ***Lightweight Through Smart Engineering***

Having a steel bar doesn't mean you have to add more weight than is required to the front of your vehicle. Our engineering practises ensure we have the right protection, designed the right way to ensure protection is at its maximum and weights at its minimum.

## ***Proven Off Road***

We take our products out and test them right here in the heart of our country in our Australian conditions so we know our products can withstand anything you throw at them.

## ***Increased Approach Angles***

Our bars are designed to give you the best advantage while off road, with increased approach angles means you can tackle those tough and steep angles better than you could with the original setup or other alternatives.

## ***Warranty***

Uneek 4x4 back itself as Australia's leading steel bull bar manufacturer. This is why we provide you with the best steel bar warranty in Australia - 5 years.

# Important Information

---



## PLEASE READ BEFORE INSTALLATION.

- When installed in accordance with these instructions, the front protection bar does not affect the operation of the vehicles SRS airbags.
- This product must be installed exactly as per these instructions using only hardware supplied.
- Take a few moments to read instructions thoroughly before beginning work.
- In the event of damage to any bar component please contact Uneek 4x4 in regard to repair/replacement of components.
- Do not use this product for any vehicle make or model other than that specified on these instructions.
- Do not remove labels from this product.
- This product and its fixings must not be modified in any way unless stated in these fitting instructions.
- The installation of this product is recommended for trained personnel.
- These instructions are correct at time of publication. Uneek 4x4 cannot be held responsible for the impact of any changes subsequently made by the vehicle manufacturer.
- During installation it is the duty of the installer to check correct operation/clearances of all components.
- Supplied tow points are designed as tow points only. Use in a recovery operation will be at operator's risk.
- Installation time: 1-2 hours.



### EYE & EAR PROTECTION REQUIRED



### DRILLING REQUIRED



### TWO PERSON LIFT REQUIRED



### TORQUE SETTING



### CUTTING OR GRINDING REQUIRED

---

#### FASTENER TORQUE SETTINGS:

M6 – 9Nm (4lb ft)

M8 – 22Nm (16lb ft)

M10 – 44Nm (32lb ft)

M12 – 77Nm (57lb ft)

#### TOOLS REQUIRED:

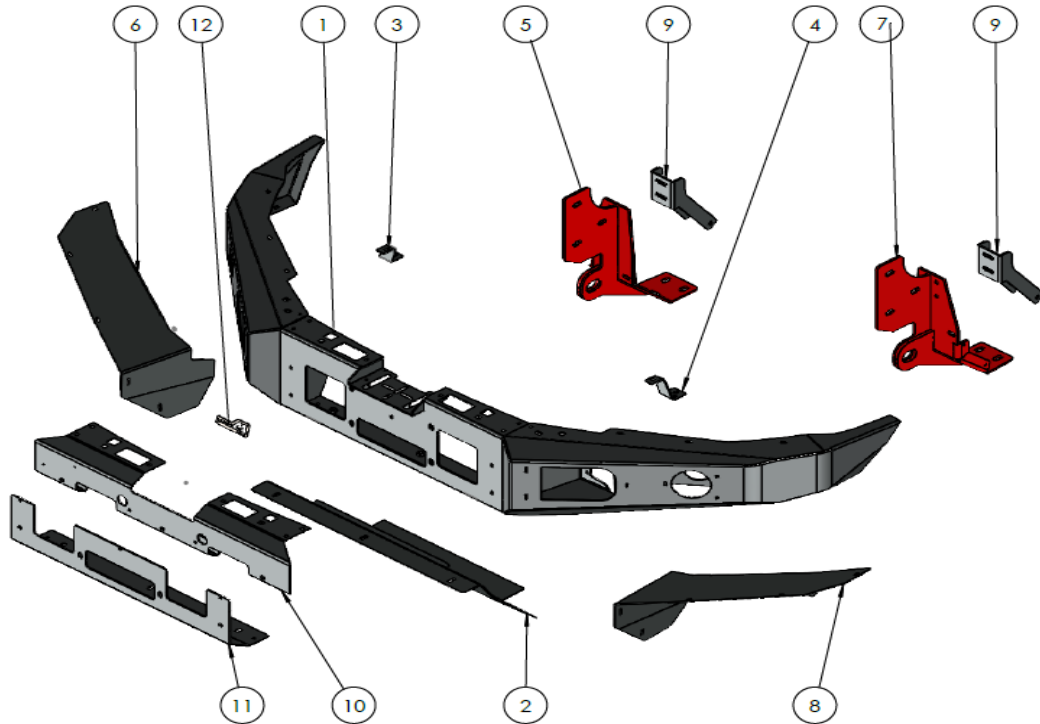
BASIC TOOL KIT: Socket set from 10 to 17mm

Spanner Set from 10 to 17mm

Side (wire) cutters

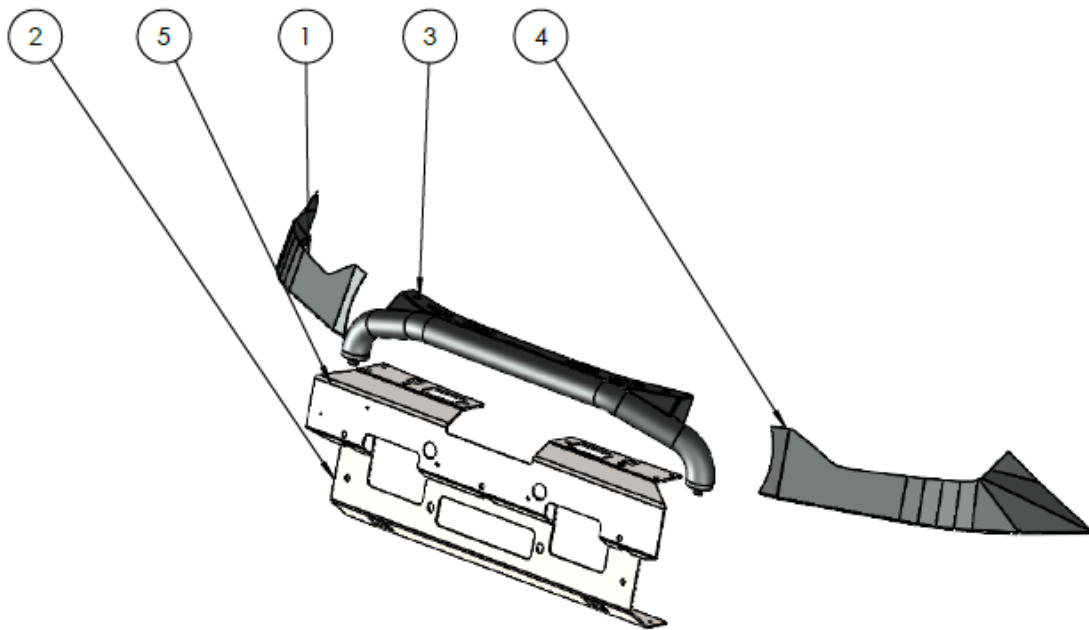
# Components and parts

## Main parts



ITEM NO.	PART NUMBER	DESCRIPTION	QTY.
1	ID-FB-CW21-ASM1	ISUZU DMAX 21' BAR WELDMENT	1
2	09-0215	ISUZU DMAX 21' INTERCOOLER PANEL ASY	1
3	03-0853R	ISUZU DMAX 21' GRILLE BRACKET - RH	1
4	03-0853L	ISUZU DMAX 21' GRILLE BRACKET - LH	1
5	03-0904R	ISUZU DMAX 21'CHASSIS MOUNT- RH	1
6	09-0213R	ISUZU DMAX 21' UNDERWING -RH	1
7	03-0904L	ISUZU DMAX 21' CHASSIS MOUNT- LH	1
8	09-0213L	ISUZU DMAX 21' UNDERWING - LH	1
9	03-0897	DMAX SUPPORT BRACE	2
10	09-0232-MS	TOP PANEL COLORADO 2016+	1
11	09-0126-MS	PANEL MIDDLE CENTURY NP300	1
12	U4X4 -LOGO PLATE-1	LOGO PLATE-1	1

### Optional components



ITEM NO.	PART NUMBER	DESCRIPTION	QTY.
1	03-0848R	ISUZU DMAX HEADLIGHT INFILL - RH	1
2	FR-FB-PXCRAWLTUBE-ASM 0	TUBE KIT RANGER CRAWLER	1
3	03-0848L	ISUZU DMAX HEADLIGHT INFILL - LH	1
4	09-0126	STAINLESS STEEL PANEL MIDDLE CENTURY NP300	1
5	09-0232	STAINLESS STEEL TOP PANEL COLORADO 2016+	1

### Fasteners

ITEM NO.	PART NUMBER	DESCRIPTION	QTY.
1	M12X30X1.75	BOLT M12 1.75 PITCH	6
2	M12 SW	M12 SPRING WASHER	6
3	M12 FW X 37	M12 FLAT WASHER LARGE	6
4	M12 X 1.75 FN	M12 FLANGE NUT	6
5	M6 FN	FLANGE NUT M6	16

6	M6 FW	FLAT WASHER 6MM	16
7	M6 x 30 x 18 HEX BOLT	M6 X 30 X 18 HEX BOLT	16
8	M6 SPRING WASHER	M6 SPRING WASHER z/p	16
9	M8X25 BHCS	M8X25 BUTTON HEAD CAP SCREW	7
10	M8 FW X 22	FLAT WASHER 8MM LARGE	3
11	M5 FN	M5 FLANGE NUT	13
12	M5X15 PSCREW	M5 X 15 PH SCREW	3
13	M5X16 CS	M5 COUNTERSUNK SCREW	10
14	M10 FN	M10 Flange nut	10
15	M10SW	M10 SPRING WASHER	12
16	M10 X 30 BOLT	M10 X 30 HEX ZP 8.8	4
17	M10FWX25	M10 FLAT WASHER X 25MM WIDE	8
18	M10X30	M10 X 1.5 X 30MM BOLT	4
19	M10 FLAT WASHER X 25	M10 FW	6
20	M8 SPRING WASHER	M8 SPRING WASHER	4
21	M8 WASHER SS	M8 WASHER SS	4
22	M6X25 BHCS	M6X25 BUTTON HEAD CAP SCREW S/S	14
23	M6 WASHER	M6 FLAT WASHER	14
24	M6 FLANGE NUT	M6 FLANGE NUT	14
25	M10X30	M10 X 1.25 X 30MM BOLT	4
26	M10X90	M10 X 1.5 X 90MM BOLT	2
27	05-0162	TUBE SPACER 10NB X 65	2

## **Step 1: Remove Radiator Trim**

- Remove ten (10) push/pull clips from top radiator trim and remove.



## **Step 2: Remove Top Grille**

- Remove three (3) push/pull clips top of grille.
- Remove one (1) Philips's head screw from center of grille.
- Lift up to unclip and remove top of grille.



## **Step 3: Remove Clips on top of Bumper**

- Remove four (4) push/pull clips from top of bumper grille between headlights.



## **Step 4: Wing Bolts**

- Remove one (1) push/pull clip from rear wing (per/side).

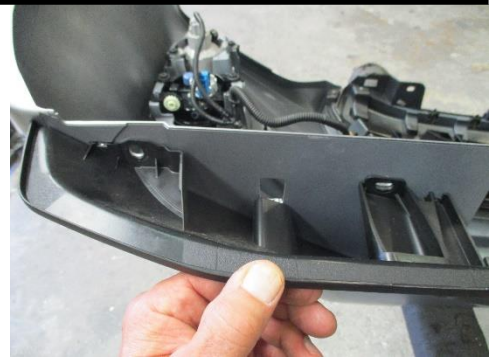




---

## **Step 5: Guard Splash Guard**

- Remove one (1) 10mm head nut and two (2) push/pull clips from under side of bumper (per/side).



---

## **Step 6 Removing the Bumper**

- Unplug light wiring from passenger Side.
- Pull bumper out on rear wing to unclip from guard retainer.
- Pull bumper forward to unclip from light.



---

## **Step 7: Underbelly Guard**

- Loosen only three (3) front 14mm head bolts from guard.
- Slide underbelly guard forward to remove.
- Remove next underbelly guard by removing two 14mm head bolts.
- Remove first two guards and resecure rear guard.



---

## **Step 8: Cross Brace Removal**

- Remove two (2) 14mm head bolts from end of chassis rail (per/side) and remove bumper reinforcement.
- Remove four bumper stiffeners bracket. Six (6) 10mm head bolts.



## Step 9: Air Dams

- Remove Air dam from vehicle



## Step 10: Install mounts

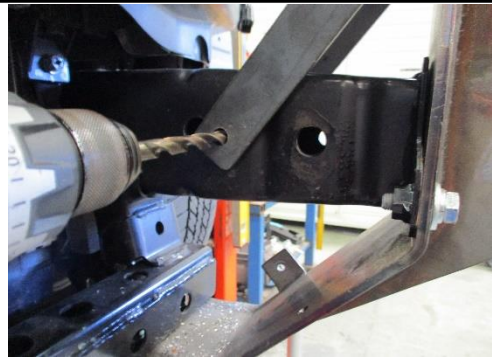
- Fit mounts to vehicle using two (2) M10 x 1.25 x 30mm bolts, flat washers, and spring washers on front of chassis
- On passengers' side, fit underside outer M10 x 1.25 x 30 bolt, flat washers, spring washers and nuts.



QTY	Description
4	M10 x 1.25 x 30 bolts
8	M10 Flat washers
8	M10 Spring Washers
4	M10 x 1.5 x 30 bolts
4	M10 X 1.5 Flange Nuts

## Step 11: Stabilizer Mounts

- Using top stabilizer mount as a guide, drill a 10.5mm hole through chassis rail. Per side.
- Enlarge inner hole drilled in chassis rail to 17.5mm to accept the tube spacer. Per side.
- Fix with M10 x 90 bolt, 65mm tube spacer, flat washer, spring washer and nut. Per side.
- Fix stabilizer mount to main mount with M10 x 30mm bolts, flat washer, spring washer and M10 nut.
- Tighten all bolts.



2	10NB x 65mm tube spacer
2	M10 x 90 bolts
4	M10 x30mm bolts
6	M10 spring washers
6	M10 flat washers
6	M10 flange nuts

## Step 12: Bumper Clips

- From side of guard, remove plastic bumper clips.
- Remove bumper attachment bolt.
- Place guard bracket between outer guards and guard mount, and over side headlight mount.



## Step 13: Light Fitment

- Remove light harness from bumper and reconnect, zip tie harness across rails on front of car.
- Ensure the harness is clear of any sharp edges and moving parts.
- Remove indicators and fog lights from the bumper.
- Install the fog lights and indicators using the M6x25mm button head bolts, M6 flat washer and M6 flange nut.



QTY	Description
14	M6x25mm button head bolts
14	M6 Flat washers
14	M6 nuts

## Step 14: Bar Fitment

- Fit bullbar onto steel mount and fix with M12 x 30 bolts, flat washers, spring washers and nuts. Per side.
- Align bullbar and tighten all bolts.

Blow filings clear and rust proof exposed metal.



QTY	Description
8	M12x1.75x30mm bolts
14	M12 Flat washers
8	M12 Spring washers
8	M12x1.75 Nuts

## Step 15: Headlight Infill

Note :- This headlight infill is an optional extras component, if not purchased skip to **step 16**

- Fit headlight infill with three M6 x 30 bolts, flat washers and M6 flange nuts. (Per side), align infill evenly to headlights then tighten all bolts
- Continue from step 17.





## **Step 16: Bumper Cut for Headlight Infill**

- Use the provided bumper cut template and mark the cut line on the bumper
- Cut the bumper along the line and clip the piece back on to the guard mount

## **Step 17: Under Bodyguards**

- Fit side under bodyguards onto lower edge of bulbar and fix with M6 x 30 bolts, flat washers and nyloc nuts.
- Once all bolts are fitted in holes, align Underbody guards and tighten all bolts.
- Fit centre under body guard, seven M8x25mm button head bolts, flat washers, and spring washers



QTY	Description
10	M6 x 30 bolts
20	M6 flat washers
10	M6 flange nuts
7	M8x30mm bolts
7	M8 flat washers
7	M8 Spring washers

## **Step 18: Trim Inner Guards**

- Mark and trim guard liner to tuck into side under bodyguard.



# ***Finished Product***

---



Revised: 11/01/2022

***Australia's Best  
Off Road Products  
Created... Not Cloned***

20 Gateway Drive, Carrum Downs, VIC, 3201

1300 806 952

[www.uneek4x4.com.au](http://www.uneek4x4.com.au)

