

UNEK4
AUSTRALIA
OFF ROAD ACCESSORIES

SKU: TL-FB-15EPXXX-ASM0



Fitting Instructions

Toyota LC200 Series 2015 on Empire Bar

***Australias Best Off Road Products
Created... Not Cloned***

Contents

WHY UNEEK	3
IMPORTANT INFORMATION	4
COMPONENTS AND PARTS	5
COMPONENTS AND PARTS	6
STEP 1	7
STEP 2	7
STEP 3	7
STEP 4	7
STEP 5	7
STEP 6	8
STEP 7	8
STEP 8	8
STEP 9	8
STEP 10	9
STEP 11	9
STEP 12	9
STEP 13	9
STEP 14	10
STEP 15	10
STEP 16	10
STEP 17	10
STEP 18	11
STEP 19	11
STEP 20	11
STEP 21	11
STEP 22	12
STEP 23	12
STEP 24	12
STEP 25	12
STEP 26	13
STEP 27	13
STEP 28	13
STEP 29	13
STEP 30	13
STEP 31	14
STEP 32	14
STEP 33	14
STEP 34	14
STEP 35	14
FINISHED PRODUCT	15

Why Uneek

Australian Designed and Built

All our products are designed and manufactured right here in Australia, allowing us to have better lead times and better quality control than companies manufacturing overseas. By supporting us you're supporting to grow the Australian economy and our brand.

Uneek Styling

We do not design our bars to look the same across the vehicle range. We fully develop our own product to individually suit each vehicle. We take time in designing from scratch and then test all our bars to comply with all relevant ADRs and Australian Standards.

Lightweight Through Smart Engineering

Having a steel bar doesn't mean you have to add more weight than is required to the front of your vehicle. Our engineering practises ensure we have the right protection, designed the right way to ensure protection is at its maximum and weights at its minimum.

Proven Off Road

We take our products out and test them right here in the heart of our country in our Australian conditions so we know our products can withstand anything you throw at them.

Increased Approach Angles

Our bars are designed to give you the best advantage while off road, with increased approach angles means you can tackle those tough and steep angles better than you could with the original setup or other alternatives.

Warranty

Uneek 4x4 back itself as Australia's leading steel bull bar manufacturer. This is why we provide you with the best steel bar warranty in Australia - 5 years.

Important Information



PLEASE READ BEFORE INSTALLATION.

- When installed in accordance with these instructions, the front protection bar does not affect the operation of the vehicles SRS airbags.
- This product must be installed exactly as per these instructions using only hardware supplied.
- Take a few moments to read instructions thoroughly before beginning work.
- In the event of damage to any bar component please contact Uneek 4x4 in regards to repair/replacement of components.
- Do not use this product for any vehicle make or model other than that specified on these instructions.
- Do not remove labels from this product.
- This product and its fixings must not be modified in any way unless stated in these fitting instructions.
- The installation of this product is recommended for trained personnel.
- These instructions are correct at time of publication. Uneek 4x4 cannot be held responsible for the impact of any changes subsequently made by the vehicle manufacturer.
- During installation it is the duty of the installer to check correct operation/clearances of all components.
- Refer to rating supplied on tow points. Use in a recovery operation will be at operator's risk.
- Installation time: 4 Hours
- Vehicle specific notes: Compatible with Original fog lights.



EYE & EAR PROTECTION REQUIRED



DRILLING REQUIRED



TWO PERSON LIFT REQUIRED



TORQUE SETTING



CUTTING OR GRINDING REQUIRED

FASTENER TORQUE SETTINGS:

M6 – 9Nm (4lb ft)

M8 – 22Nm (16lb ft)

M10 – 44Nm (32lb ft)

M12 – 77Nm (57lb ft)

TOOLS REQUIRED:

Basic tool kit with sockets, spanners and hex keys. Power drill with 5mm and 9mm drill bit, rubber mallet, centre punch, hammer.

Components and parts

SINGLE HOOP EMPIRE ONLY

1	TL-FB-15EPHS-ASM1	LC200 EMPIRE BAR CLASSIC	1
---	-------------------	--------------------------	---

TRIPPLE HOOP EMPIRE CLASSIC ONLY

1	NARVA 95202	NARVA LED INDICATOR 95202	2
2	M5 FN	M5 FLANGE NUT	4
3	TL-FB-15EPC-ASM1	LC200 EMPIRE BAR CLASSIC	1

FASTNERS

ITEM NO.	PART NUMBER	DESCRIPTION	QTY.
1	M10 WASHER X 25	M10 FW	4
2	M10 FN	M10 Flange nut	4
3	M10-1.5 x 220	M10x220 HEX BOLT Z/P	2
4	M10X30	M10 X 1.5 X 30MM BOLT	4
5	M12 FW	M12 FLAT WASHER	10
6	M12 X 1.75 FN	M12 FLANGE NUT	8
7	M12X30X1.75	BOLT M12 1.75 PITCH	8
8	M6 CN 3MM	CAGE NUT M6x2.6-3.5	8
9	M6 FN	FLANGE NUT M6	12
10	M6 FW BLACK	FLAT WASHER 6MM BLACK	20
11	M6X16 BZP	BOLT M6 X 16 BLACK	20
12	M8 FN	FLANGE NUT M8	8
13	M8 WASHER BZP	M8 WASHER BLACK ZP	8
14	M8X20 BHCS BZP	M8X20 BN HD CAP SCREW BLACK ZP	8

SHEETMETAL COMPONENTS

ITEM NO.	PART NUMBER	DESCRIPTION	QTY.
1	03-0398L	HILUX 2015 FOG LIGHT BRACKET	1
2	03-0398R	HILUX 2015 FOG LIGHT BRACKET	1
3	05-0186	CHASSIS PIN LC200	2
4	06-0402	LC200 2015 FAIRLEAD CRADLE	1
5	09-0162L	LC200 2015 UNDER WING PANEL	1
6	09-0162R	LC200 2015 UNDER WING PANEL	1
7	TL-FB-15EP-ASM2L	LC200 MOUNT BRACKET	1
8	TL-FB-15EP-ASM2R	LC200 MOUNT BRACKET	1
10	TL-FB-15EP-ASM5	LC200 BASH PLATE SILVER	1

Components and parts

SUBASSEMBLY KITS

Number plate flip kit

ITEM NO.	PART NUMBER	DESCRIPTION	QTY.
1	HDPE SPACER-BLACK	HDPE SPACER - 20 X 8 X 6MM THICK BLACK	2
2	M5 FN	M5 FLANGE NUT	4
3	M5X10 PSCREW	M5 X 10 PH SCREW	4
4	m5 washer	M5 washer	4
5	M6 FN	FLANGE NUT M6	2
6	M6 washer	m6 washer	2
7	M6X20	BOLT M6 X 20	2
8	M8 NYLOC	NYLOC M8	2
9	M8 WASHER	M8 WASHER	4
10	M8 X 30	M8 X 30 HEX BOLT 8.8 Z/P	2
11	NP-F-EP-1	NUMBER PLATE FLIP EMPIRE REAR	1
12	NP-F-EP-2	NUMPER PLATE FLIP EMPIRE FRONT	1
13	R clip- cotter pin	R Clip	1

Jack Point

ITEM NO.	PART NUMBER	DESCRIPTION	QTY.
1	03-0400	HIGH LIFT JACK POINT	2
2	M8X20 BHCS BZP	M8X20 BUTTON HD CAP SCREW BLACK ZP	4
3	M8 WASHER BZP	M8 WASHER BLACK ZP	4
4	M8 FN	FLANGE NUT M8	4

Mesh kit

ITEM NO.	PART NUMBER	DESCRIPTION	QTY.
1	09-0164	MESH CENTER LC200 2015	1
2	09-0170L	MESH LC200 2015	1
3	09-0170R	MESH LC200 2015	1
4	M6 CN 3MM	M6 CAGE NUT 2.6-3.5	8
5	M6 FN	FLANGE NUT M6	4
6	M6 FW BZP	FLAT WASHER 6MM BLACK ZP	12
7	M6X20 BZL	BOLT M6 X 16 BLACK BLACK ZP	12

Step 1

Open bonnet and remove black plastic cover from top of radiator.



Step 2

Pop off chrome trim under headlight using plastic levers.



Step 3

Reach down behind grille and unscrew camera bracket and unplug radar in badge if fitted.



Step 4

Reach behind grille and pop out plastic clips holding top of bumper.



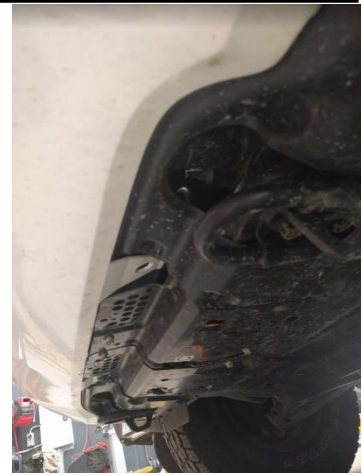
Step 5

Removed screws located in wheel arch securing bumper.



Step 6

Remove all fasteners on underside of bumper.
Flex bumper away from car to check if all fasteners have been removed.



Step 7

Unplug main loom plug located behind grille beside radiator fan.



Step 8

Release headlight washer hose if fitted.
Kink hose and cable tie up to stop water leaking out.



Step 9

Starting from the wheel arch, pull bumper away from car. Clips are tight yet will release with steady pressure. Once all clips are released, removed bumper and grille together.



Step 10

Remove foam panel.

(Part shown in picture has been cracked and damaged in accident.)



Step 11

Remove alloy crash beam and crush cans located behind it. (There are extra fasteners on the underside securing it to the bash plate).

Remove lower plastic guards under crash beam and crush cans.

RETAIN BOLTS FROM CRUSH CANS



Step 12

Triangular brace in front of radiator needs to be removed. Centre punch then drill out 2x spot welds. Unbolt top section of the mount. Touch up paint.



Step 13

Remove tow hooks and tie downs. Retail bolts and tie bracket.

RETAIL BOLTS.



Step 14

Remove bumper clips on quarter panel. Remove 2x bolts then use plastic leaver to pry plastic away from quarter panel. The clips are very tight! Reinstall upper bolt to secure headlight.



Step 15

Remove grille from bumper and re fit to vehicle. Drill 5mm hole in large centre tab on grille and bolt grille onto the steel crossmember.



Step 16

Trim plastic shrouds above mounts on both sides of vehicle.



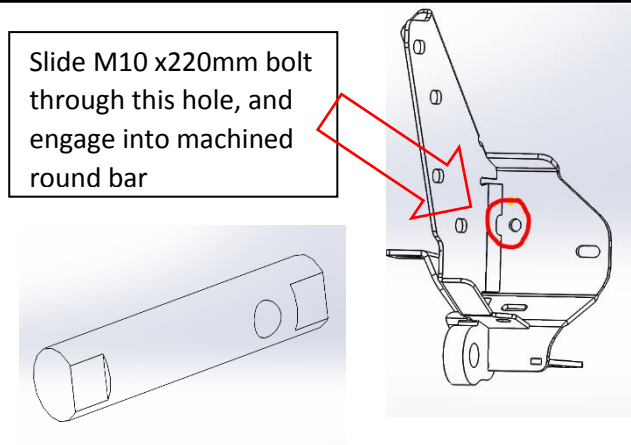
Step 17

Install mount brackets on vehicle. Use original nuts on front face, and original bolts on lower face. If desired you can re mount the right angle tie down point on the underside.



Step 18

Just rearward of body mount is rectangular hole in the chassis. Slide machined bar in, with the tapped hole closest to the outside and flats facing forward. Careful to not drop inside the chassis! Slide the M10x220mm through the centre hole on the mount and engage in the machined bar.



Step 19

Remove fog lights from original bumper. Bolt into fog light brackets shown using M6 bolt, washers and flange nut. Bolt into bar using additional M6 bolts, washers and flange nuts. Adjust using the lower original adjustment not until approximately horizontal. Adjust to light to the centre of aperture in bar then tighten. Torque bolts.



Step 20

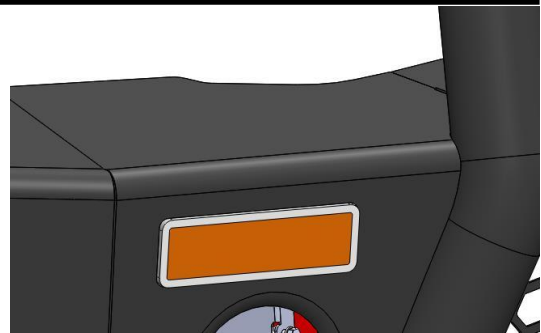
If fitted, remove parking sensors from original bars and refit in the same order in Uneek bar. If no parking sensors, install plugs in holes.

Step 21

If fitted, remove headlight washers from original bar. Start by removing the metal clip on the underside, followed by sliding lower plastic retainer downwards. Refit in Uneek bar. If no headlight washers fitted, install blanking plugs.

Step 22

Fit indicators into Uneek bar using M5 nuts. Cut indicator cable in half. Splice/solder the free end of the cable into the vehicle wiring. Fit male/female spade connectors to enable cable to be reconnected once bar is fitted. Note: For vehicles used in harsh environments sealed connectors recommended.



Step 23

Fit 4x cage nuts into each wing.



Step 24

With the help of an assistant or lifting device, fit bar onto mounts. Fit 8xM12 bolts, washers and nuts between mounts and bar. Adjust bar left or right to achieve symmetrical fit. Torque mount to chassis bolts.



Step 25

Adjust bar for best fit on vehicle. Aim for approximately: 20mm between guards and quarter panels. 10 to 20mm gaps to grille. Wing rear edge should line up with wheel arch.



Step 26

Plug on parking sensors, fog lights, indicators, headlight washers and cable tie all loose looms. If none are fitted, silicon in blanking plugs.

Step 27

Fit winch if required. This bar suits most standard body low mount winches. Plasma rope winches and hawse fairleads recommended. If fitting roller fairlead number plate flip will need spacing forward.



Winch mounts feet down and is installed through the front of the bar. Control boxes mount on top of winch using brackets supplied in the winch fitting kit.

Refer to winch fitting instructions for more information.

Step 28

Fit winch fairlead onto fairlead cradle as shown. Using bolts from winch kit. Fit fairlead cradle into the bar using 4xM10 bolts, washers and nuts. From bullbar kit.



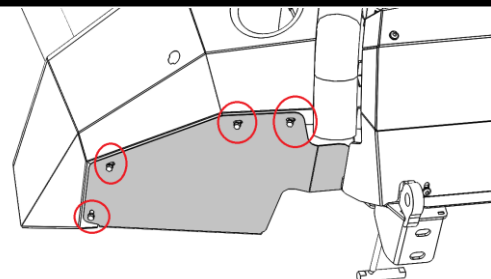
Step 29

Fit any driving lights or light bars required.



Step 30

Fit wing under panels using M6 bolts, flat washers and cage nuts installed in the bar previously.



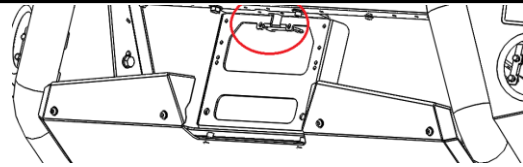
Step 31

Fit centre bash plate using M8 dome head bolts, flat washers and flange nuts.



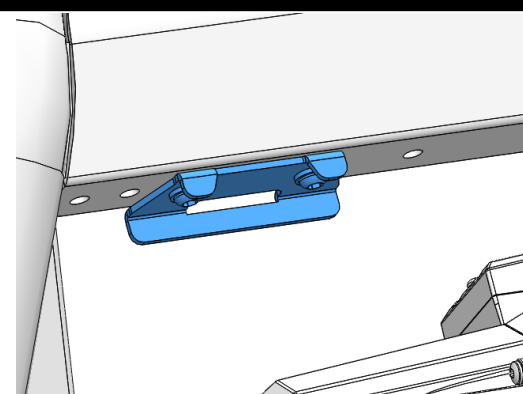
Step 32

Fit front facing camera if fitted. Use original steel mount from vehicle to secure above failed bracket. Use 2x M6 Bolts.



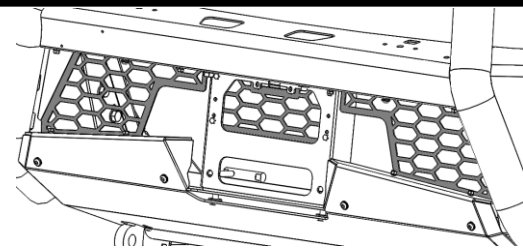
Step 33

Fit Jack points using M8 button head bolts, black flat washers.



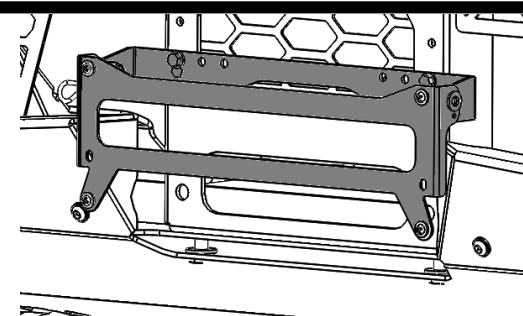
Step 34

Fit mesh grilles at this stage. Using M6 bolts, cage nuts and washers.



Step 35

Preassembly number plate bracket using M6 bolts, spacers. Washers and nyloc nuts. Mount number plate bracket to bar at desired height. There are a number of holes to allow fitment around different winch and light bar configurations. Mount number plate to bar using M6 bolts, washers and flange nuts.



Finished Product



Revised: 21/08/2019

***Australia's Best
Off Road Products
Created... Not Cloned***

20 Gateway Drive, Carrum Downs, VIC, 3201

1800 806 952

www.uneek4x4.com.au

