

**UNEK44**  
AUSTRALIA  
OFF ROAD ACCESSORIES

**SKU: HC-FB-CW2016-ASM0**



***Fitting Instructions***  
**Holden Colorado 2017+**  
**Crawler Bull Bar**

**Australia's Best Off Road Products  
Created... Not Cloned**

# Contents

---

<b>WHY UNEEK</b>	<b>3</b>
<b>IMPORTANT INFORMATION</b>	<b>4</b>
<b>COMPONENTS AND PARTS</b>	<b>5</b>
<b>COMPONENTS AND PARTS</b>	<b>6</b>
<b>STEP 1</b>	<b>7</b>
<b>STEP 2</b>	<b>7</b>
<b>STEP 3</b>	<b>7</b>
<b>STEP 4</b>	<b>7</b>
<b>STEP 5</b>	<b>8</b>
<b>STEP 6</b>	<b>8</b>
<b>STEP 7</b>	<b>8</b>
<b>STEP 8</b>	<b>8</b>
<b>STEP 9</b>	<b>9</b>
<b>STEP 10</b>	<b>9</b>
<b>STEP 11</b>	<b>9</b>
<b>STEP 12</b>	<b>9</b>
<b>STEP 13</b>	<b>9</b>
<b>STEP 14</b>	<b>10</b>
<b>STEP 15</b>	<b>10</b>
<b>STEP 16</b>	<b>10</b>
<b>STEP 17</b>	<b>10</b>
<b>STEP 18</b>	<b>11</b>
<b>STEP 19</b>	<b>11</b>
<b>STEP 20</b>	<b>11</b>
<b>STEP 21</b>	<b>11</b>
<b>STEP 22</b>	<b>12</b>
<b>STEP 23</b>	<b>12</b>
<b>STEP 24</b>	<b>12</b>
<b>FINISHED PRODUCT</b>	<b>13</b>

# ***Why Uneek***

---

## ***Australian Designed and Built***

All our products are designed and manufactured right here in Australia, allowing us to have better lead times and better quality control than companies manufacturing overseas. By supporting us you're supporting to grow the Australian economy and our brand.

## ***Uneek Styling***

We do not design our bars to look the same across the vehicle range. We fully develop our own product to individually suit each vehicle. We take time in designing from scratch and then test all our bars to comply with all relevant ADRs and Australian Standards.

## ***Lightweight Through Smart Engineering***

Having a steel bar doesn't mean you have to add more weight than is required to the front of your vehicle. Our engineering practises ensure we have the right protection, designed the right way to ensure protection is at its maximum and weights at its minimum.

## ***Proven Off Road***

We take our products out and test them right here in the heart of our country in our Australian conditions so we know our products can withstand anything you throw at them.

## ***Increased Approach Angles***

Our bars are designed to give you the best advantage while off road, with increased approach angles means you can tackle those tough and steep angles better than you could with the original setup or other alternatives.

## ***Warranty***

Uneek 4x4 back itself as Australia's leading steel bull bar manufacturer. This is why we provide you with the best steel bar warranty in Australia - 5 years.

# Important Information

---



## PLEASE READ BEFORE INSTALLATION.

- When installed in accordance with these instructions, the front protection bar does not affect the operation of the vehicles SRS airbags.
- This product must be installed exactly as per these instructions using only hardware supplied.
- Take a few moments to read instructions thoroughly before beginning work.
- In the event of damage to any bar component please contact Uneek 4x4 in regards to repair/replacement of components.
- Do not use this product for any vehicle make or model other than that specified on these instructions.
- Do not remove labels from this product.
- This product and its fixings must not be modified in any way unless stated in these fitting instructions.
- The installation of this product is recommended for trained personnel.
- These instructions are correct at time of publication. Uneek 4x4 cannot be held responsible for the impact of any changes subsequently made by the vehicle manufacturer.
- During installation it is the duty of the installer to check correct operation/clearances of all components.
- Supplied tow points are designed as tow points only. Use in a recovery operation will be at operator's risk.
- Installation time: 4-5 hours.
- Vehicle specific notes: A flip up license plate kit may be required. Optional Narva 90862 license plate light.



### EYE & EAR PROTECTION REQUIRED



### DRILLING REQUIRED



### TWO PERSON LIFT REQUIRED



### TORQUE SETTING



### CUTTING OR GRINDING REQUIRED

---

#### FASTENER TORQUE SETTINGS:

M6 – 9Nm (4lb ft)

M8 – 22Nm (16lb ft)

M10 – 44Nm (32lb ft)

M12 – 77Nm (57lb ft)

#### TOOLS REQUIRED:

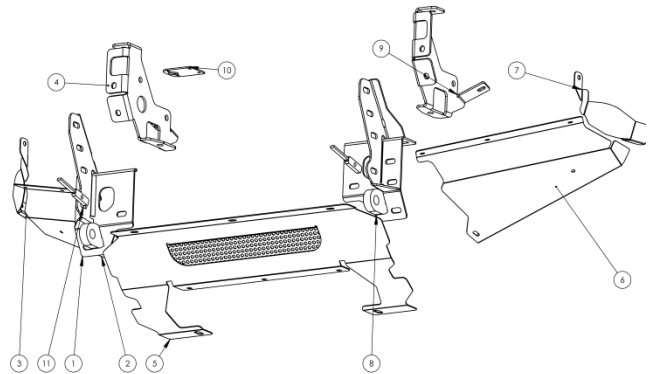
**BASIC TOOL KIT:** Soldering iron or electrical in-line connectors.

Male and female spade terminals.

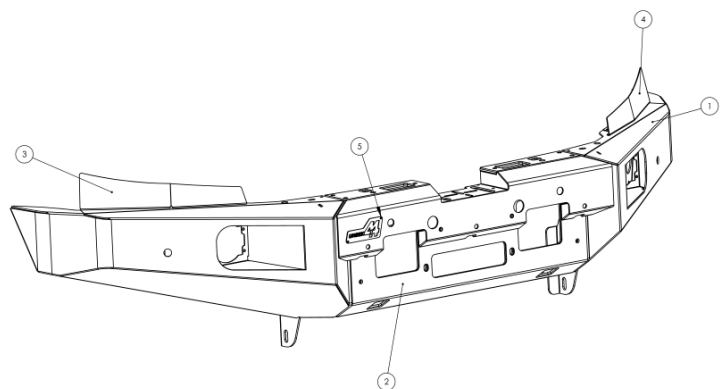
Drill and drill bits up to 12mm.

# Components and parts

ITEM	PART NUMBER	DESCRIPTION	QTY
1	HC-FB-CW2016-ASM2R	2016+ COLORADO CHASSIS BRACKET RHS	1
2	09-0168R	COLORADO 2016+ UNDER WING PANEL	1
3	03-0442R	COLORADO 2016+ END COVER	1
4	03-0424R	COLORADO 2016+ CHASSIS SUPPORT BRKT RHS	1
5	09-0140	COLORADO 2016+ CENTRE PANEL	1
6	09-0168L	COLORADO 2016+ UNDER WING PANEL	1
7	03-0442L	COLORADO 2016+ END COVER	1
8	HC-FB-CW2016-ASM2L	2016+ COLORADO CHASSIS BRACKET LHS	1
9	03-0424L	COLORADO 2016+ CHASSIS SUPPORT BRKT LHS	1
10	04-0202	WINCH CONTROLER MOUNT PLATE	1
11	04-0302	nut plate m10x1.5 thin	2



ITEM	PART NUMBER	DESCRIPTION	QTY
1	HC-FB-CW2016-ASM1	COLORADO 2016+ CRAWLER BAR	1
2	09-0126	PANEL MIDDLE CENTURY NP300	1
3	09-0174R	IN FILL PANEL COLORADO 2016+	1
4	09-0174L	IN FILL PANEL COLORADO 2016+	1
5	09-0199	PANELL ASSY TOP COLORADO 2016+	1



# Components and parts

ITEM	PART NUMBER	DESCRIPTION	QTY
1	CARWAY DRL	DRL FOG LIGHT	1 Pair
2	M10FWX25	M10 FLAT WASHER X 25MM WIDE	1
3	M10X30	M10 X 1.5 X 30MM BOLT	2
4	M12 FW	M12 FLAT WASHER	20
5	M12 X 1.75 FN	M12 FLANGE NUT	16
6	M12X30X1.75	BOLT M12 1.75 PITCH	16
7	M5 FN	M5 FLANGE NUT	23
8	M5X10 PSCREW	M5 X 10 PH SCREW	8
9	M5X15 PSCREW	M5 X 15 PH SCREW	5
10	M5X16 CS	M5 COUNTERSUNK SCREW	10
11	M6 CN 3MM	CAGE NUT M6x2.6-3.5	9
12	M6 FN	FLANGE NUT M6	10
13	M6 FW BLACK	FLAT WASHER 6MM BLACK	17
14	M6X16 BZP	BOLT M6 X 16 BLACK	17
15	M8 FN	FLANGE NUT M8	5
16	M8 WASHER BZP	M8 WASHER BLACK ZP	5
17	M8X20 BHCS BZP	M8X20 BUTTON HEAD CAP SCREW BLACKP	5
18	ICSENSORCLIP	Plastic sensor housing bracket	4

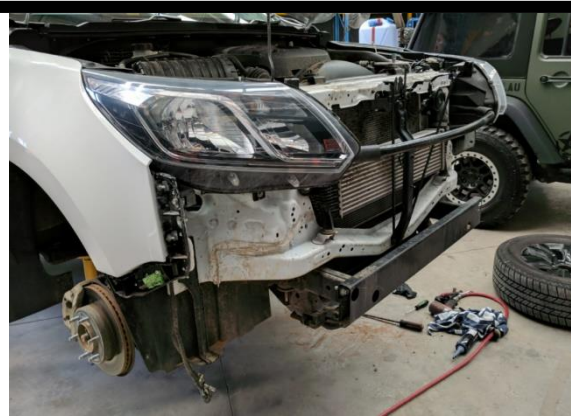


Winch spacer may be required depending on winch motor size. Tube kit FR-FB-PXCRAWLTUBE-ASM0 is optional. It is recommended that a slim line number plate is fitted.

Sensor clips are to be placed in 2 holes allocated on L+R wings and 2 in top fascia panel. If parking sensors are fitted, remove center section and install sensors into clips.

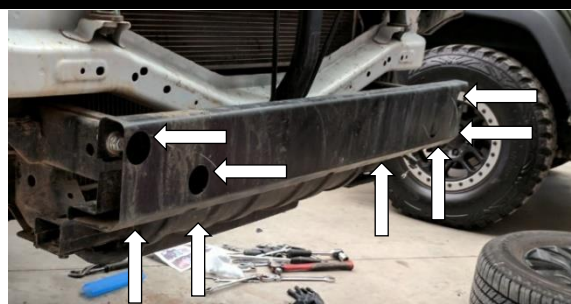
## Step 1

Remove plastic panels under bumper, bumper, fog lights if fitted, grille and steel bumper support. Remove plastic bumper mounts from guard sections. Retain bolts from bumper support. Remove front bash plate.



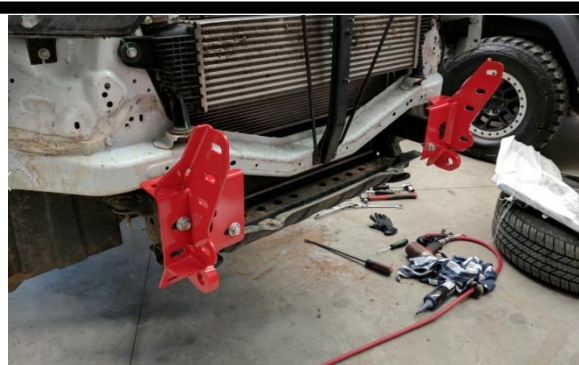
## Step 2

Remove cross member, retaining the bolts.  
Remove front bolts from lower brace bars shown by vertical arrows in image.



## Step 3

Fit mounts to vehicle using bolts removed in step 2.



## Step 4

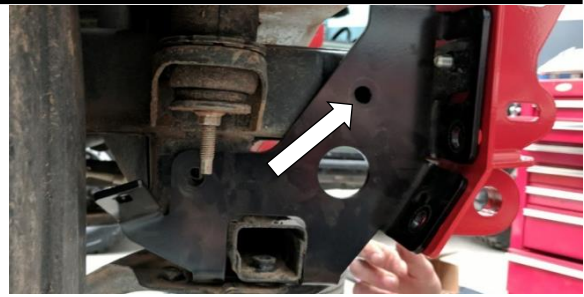
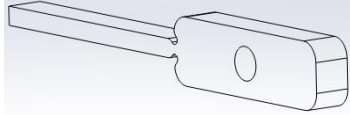
Fit chassis reinforcing plates.  
Slide in above lower brace bar.  
Per side, use 4x M12x30 bolt, washer and flange nut set  
Reinstall outer bolt to lower brace bar. Do not install inner.  
Do not tighten.





## Step 5

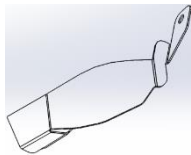
On the last hole, use M12x30 bolt, washer, and nut stick shown.



## Step 6

Remove plastic guard trim.

Bolt sheet metal replacement trim in place using M6 bolt, washer and flange nut on the upper hole, and M6 nut on the lower stud.



## Step 7

If fitting winch, lower portion of grille that needs to be trimmed.

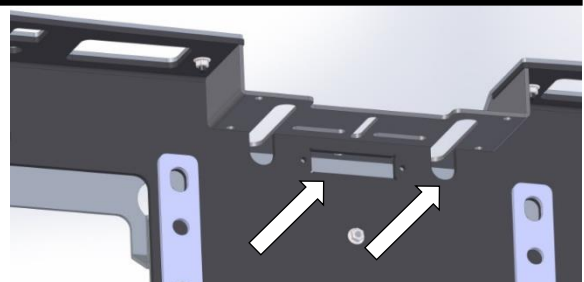
Trim off grille hanging below second rib of grille below badge.

Reinstall grille after trimming.



## Step 8

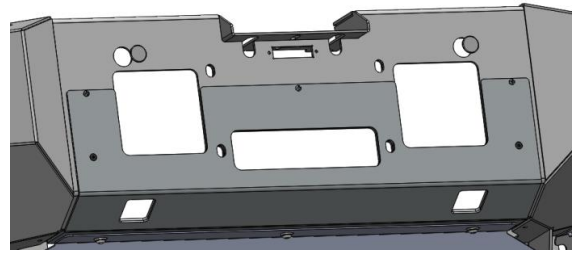
Install optional winch light and route cable to either side of bar. Run cable through access (arrow) hole.





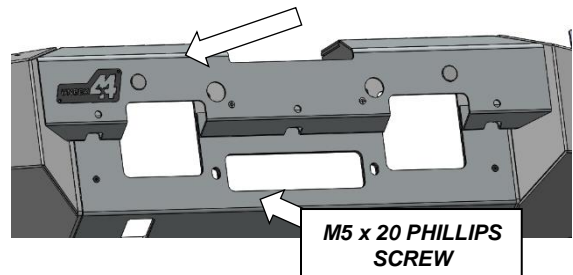
## Step 9

Fit lower stainless panel to bar using 4 x M5 countersunk screws and M5 flange nuts.



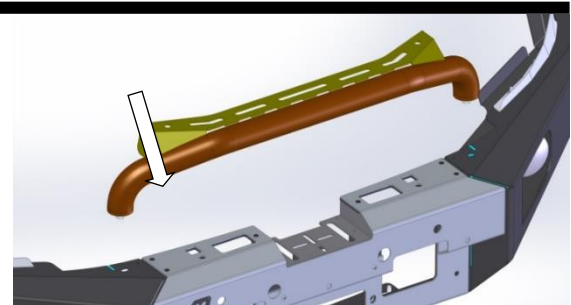
## Step 10

Fit upper panel assembly using 6 x M5 countersunk screws and flange nuts and 3 x M5 x 15 phillips head screws through the front face of panel with flange nuts.



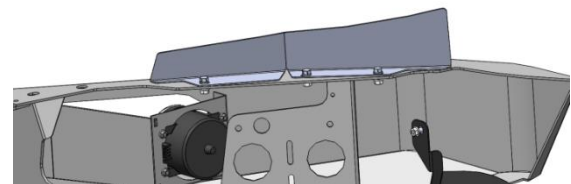
## Step 11

If fitting optional tube kit do so now to holes just outside stainless top panel.



## Step 12

Fit headlight brackets to wing **loosely** with M6 x 20 bolts, flat washers and M6 flange nuts.



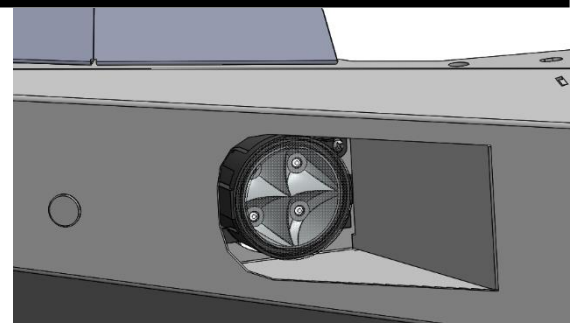
## Step 13

Fit fog lights to bar using M5 bolts, flange nuts and washers.

Fit parking sensors if fitted to vehicle.

Use supplied Sensor Bracket Kit to install sensors.

If not, install blanking plugs.

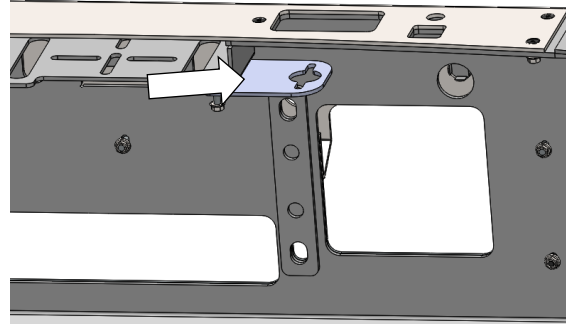


## Step 14

Remove remote plug from control box and install in bracket shown.

Use M5x20 bolts, flat washers and flange nuts supplied with bar.

Extend cables if required.



## Step 15

Fit the winch to bar making sure the clutch handle is facing forward with the winch mounting points.



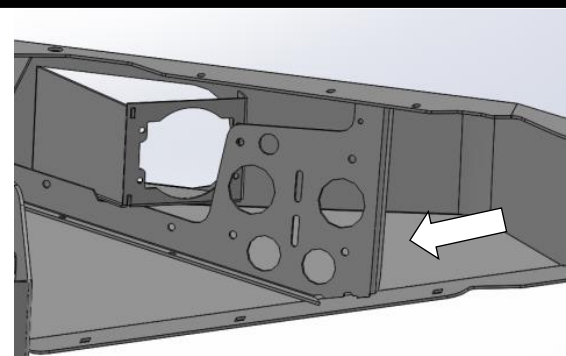
## Step 16

Fit control box to mounting slots on wing brace.

Use fasteners supplied with winch.



M6-9Nm

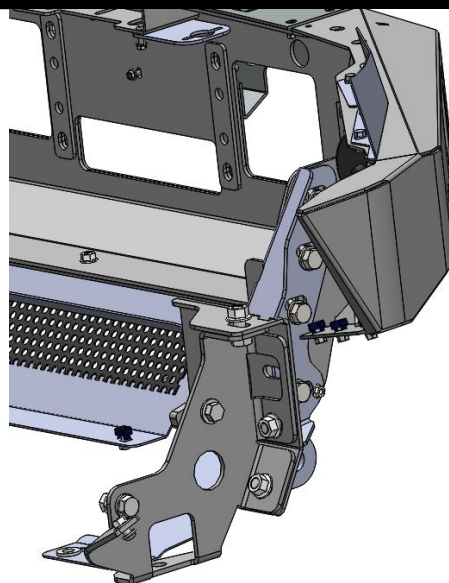


## Step 17

Lift bar onto mounts.

Install 4xM12 bolts, washers and flange nuts per side.

Do not tighten.



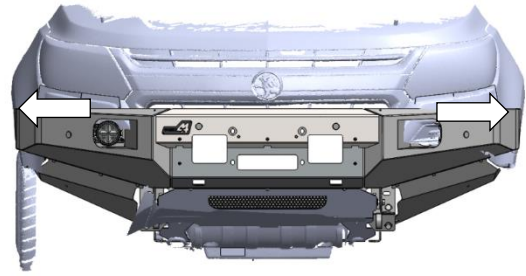
## Step 18

Centralize bar on vehicle first to wing then fender so clearance is as even as possible on both sides.

Tighten all mounts to chassis bolts.



M12-77Nm



## Step 19

Adjust bar till even clearance is achieved to headlights and grille on both sides.  
If vehicle is to be used very hard off-road, more clearance is recommended to allow for body and chassis movement. Tighten mount to bar bolts.



N12-77Nm



## Step 20

Tighten headlight infill panel.



M6-9Nm



## Step 21

If winch is fitted, connect cables as per winch instructions.

## Step 22

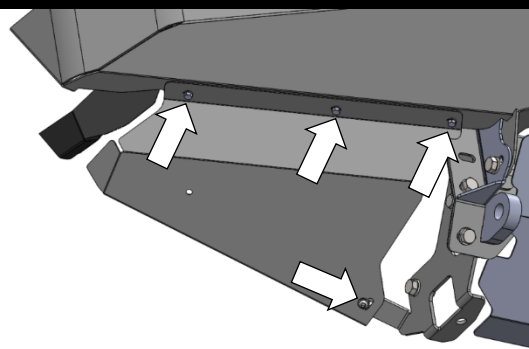
Attach outer wing guards using M6 bolts on washers to the wing, and M8 button head cap screws and M8 flat washers on the lower mount point.

Mark inner guard along back edge of panel.

Trim all guard hanging below.

Vibrating multi tool cutter recommended.

Tuck cut edge of plastic panel, behind guard liner.



## Step 23

Install 3x M6 cage nuts into panel first.

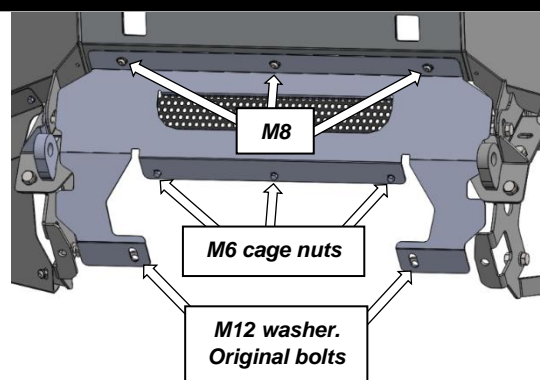
Fit center panel.

Slide lower edge in above the front original braces, and slide 1xM12 washer in each side to space it to level with outer chassis reinforcing.

A pry bar may be needed to spring braces down to slide washer in.

Install original bolts.

Along the top edge, use M8 button head cap screws, washers and flange nuts.



M12-77Nm M8-22Nm

## Step 24

Fit lower plastic guard using M6 bolts, washers and cage nuts previously fitted.



M6-9Nm

# ***Finished Product***

---



Revised: 25/07/2019

***Australia's Best  
Off Road Products  
Created... Not Cloned***

20 Gateway Drive, Carrum Downs, VIC, 3201

1800 806 952

[www.uneek4x4.com.au](http://www.uneek4x4.com.au)

