

UNEK4
AUSTRALIA
OFF ROAD ACCESSORIES

SKU: FR-FB-PX3CW-ASM0



Fitting Instructions

Ford Ranger 2018 - 2021

Crawler Series Bar

***Australia's Best Off Road Products
Created... Not Cloned***

Contents

WHY UNEEK	3
IMPORTANT INFORMATION	4
COMPONENTS AND PARTS	5
COMPONENTS AND PARTS	6
PLEASE NOTE	7
STEP 1	8
STEP 2	8
STEP 2A	8
STEP 2B	8
STEP 2C	9
STEP 2D	9
STEP 2E	9
STEP 2F	9
NOTE:	10
STEP 3	10
STEP 4	10
STEP 5	10
STEP 6	10
STEP 7	11
STEP 8	11
STEP 9	11
STEP 10	11
STEP 11	11
STEP 12	12
STEP 13	12
STEP 14	12
STEP 15	13
STEP 16	13
STEP 17	13
STEP 18	14
STEP 19	14
STEP 20	15
STEP 21	15
STEP 22	15
FINISHED PRODUCT	16

Why Uneek

Australian Designed and Built

All our products are designed and manufactured right here in Australia, allowing us to have better lead times and better quality control than companies manufacturing overseas. By supporting us you're supporting to grow the Australian economy and our brand.

Uneek Styling

We do not design our bars to look the same across the vehicle range. We fully develop our own product to individually suit each vehicle. We take time in designing from scratch and then test all our bars to comply with all relevant ADRs and Australian Standards.

Lightweight Through Smart Engineering

Having a steel bar doesn't mean you have to add more weight than is required to the front of your vehicle. Our engineering practises ensure we have the right protection, designed the right way to ensure protection is at its maximum and weights at its minimum.

Proven Off Road

We take our products out and test them right here in the heart of our country in our Australian conditions so we know our products can withstand anything you throw at them.

Increased Approach Angles

Our bars are designed to give you the best advantage while off road, with increased approach angles means you can tackle those tough and steep angles better than you could with the original setup or other alternatives.

Warranty

Uneek 4x4 back itself as Australia's leading steel bull bar manufacturer. This is why we provide you with the best steel bar warranty in Australia - 5 years.

Important Information



PLEASE READ BEFORE INSTALLATION.

- When installed in accordance with these instructions, the front protection bar does not affect the operation of the vehicles SRS airbags.
- This product must be installed exactly as per these instructions using only hardware supplied.
- Take a few moments to read instructions thoroughly before beginning work.
- In the event of damage to any bar component please contact Uneek 4x4 in regards to repair/replacement of components.
- Do not use this product for any vehicle make or model other than that specified on these instructions.
- Do not remove labels from this product.
- This product and its fixings must not be modified in any way unless stated in these fitting instructions.
- The installation of this product is recommended for trained personnel.
- These instructions are correct at time of publication. Uneek 4x4 cannot be held responsible for the impact of any changes subsequently made by the vehicle manufacturer.
- During installation it is the duty of the installer to check correct operation/clearances of all components.
- Supplied tow points are designed as tow points only. Use in a recovery operation will be at operator's risk.
- Installation time: 5-6 hours.
- Vehicle specific notes: If fitting a winch, it is recommended to purchase the number plate flip (NP-F-ASM0). Optional Narva 90862 license plate light.



EYE & EAR PROTECTION REQUIRED



DRILLING REQUIRED



TWO PERSON LIFT REQUIRED



TORQUE SETTING



CUTTING OR GRINDING REQUIRED

FASTENER TORQUE SETTINGS:

M6 – 9Nm (4lb ft)

M8 – 22Nm (16lb ft)

M10 – 44Nm (32lb ft)

M12 – 77Nm (57lb ft)

TOOLS REQUIRED:

Basic tool kit, soldering iron or electrical in-line connectors, male and female spade terminals, drill and drill bits up to 12mm.

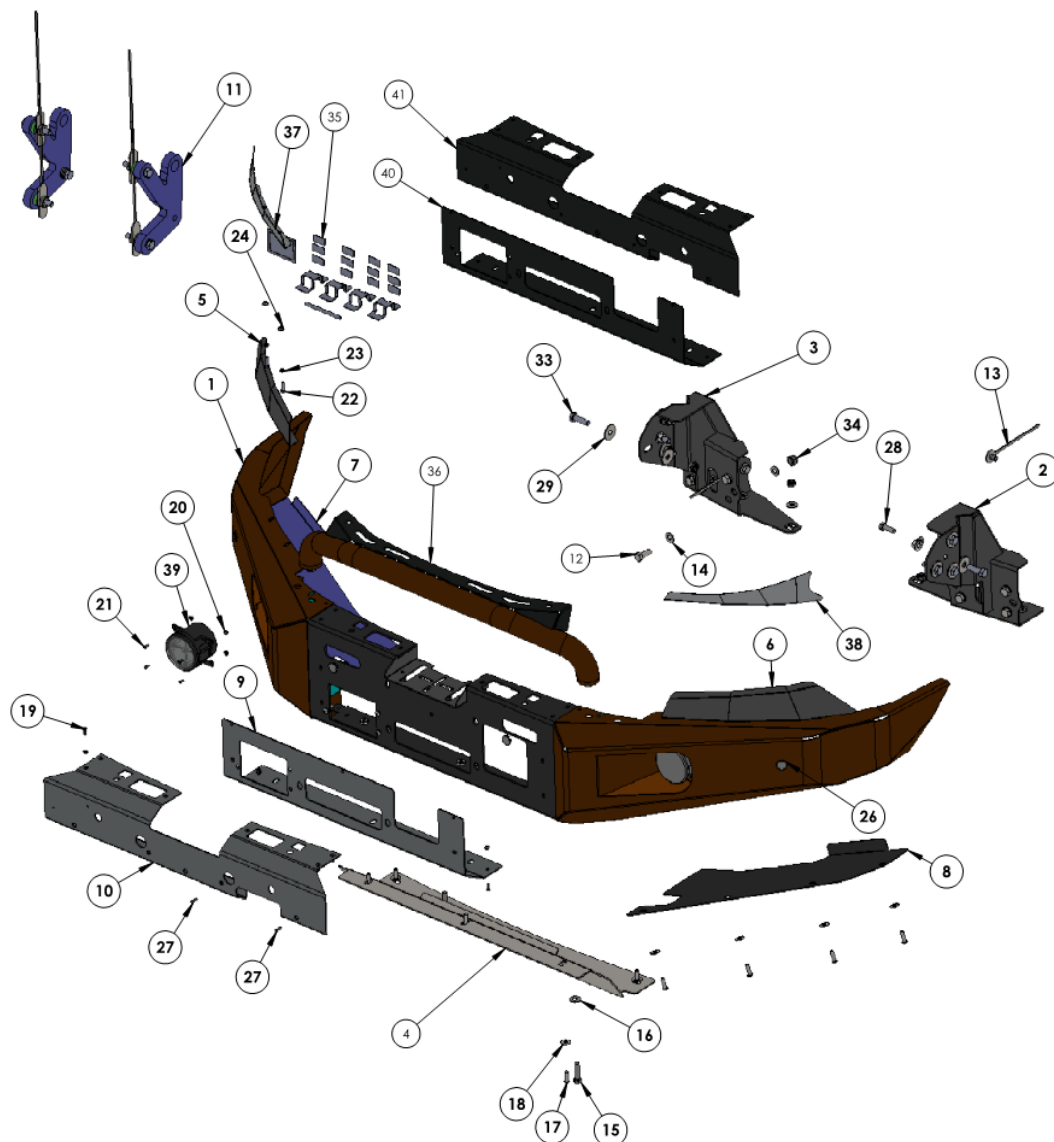
Components and parts

ITEM NO.	PART NUMBER	DESCRIPTION	QTY.
1	FR-FB-PX2CW-ASM1	RANGER PX2 CRAWLER WELDED ASSY	1
2	03-0318L	IMPACT ASSY CRAWLER PX RANGER	1
3	03-0318R	IMPACT ASSY CRAWLER PX RANGER	1
4	09-0110	CENTRE PANEL ASSY PX CENTURY	1
5	03-0326R	BRACKET HEADLIGHT PX RANGER 2	1
6	03-0326L	BRACKET HEADLIGHT PX RANGER 2	1
7	09-0098R	PANEL OUTER CRAWLER PX RANGER	1
8	09-0098L	PANEL OUTER CRAWLER PX RANGER	1
9	09-0102	PANEL MIDDLE CENTURY PX2	1
10	09-0108	PANEL TOP RANGER CRAWLER	1
11	FR-RP-ASM0	FORD RANGER RECOVERY POINT	1

Optional

ITEM NO.	PART NUMBER	DESCRIPTION	QTY.
35	SENS-BRK-KIT	Universal Sensor Bracket Kit	1
36	FR-FB-PXCRAWLTUBE-ASM0	TUBE KIT RANGER CRAWLER	1
37	03-0322R	BRACKET HEADLIGHT PX RANGER	1
38	03-0322L	BRACKET HEADLIGHT CRAWLER PX RANGER	1
39	CARWAY DRL	DRL FOG LIGHT	2
40	09-0102-MS	PANEL MIDDLE CENTURY PX2 BLACK MILD STEEL	1
41	09-0106-MS	PANEL BLACK MILD TOP PX2 RANGER	1

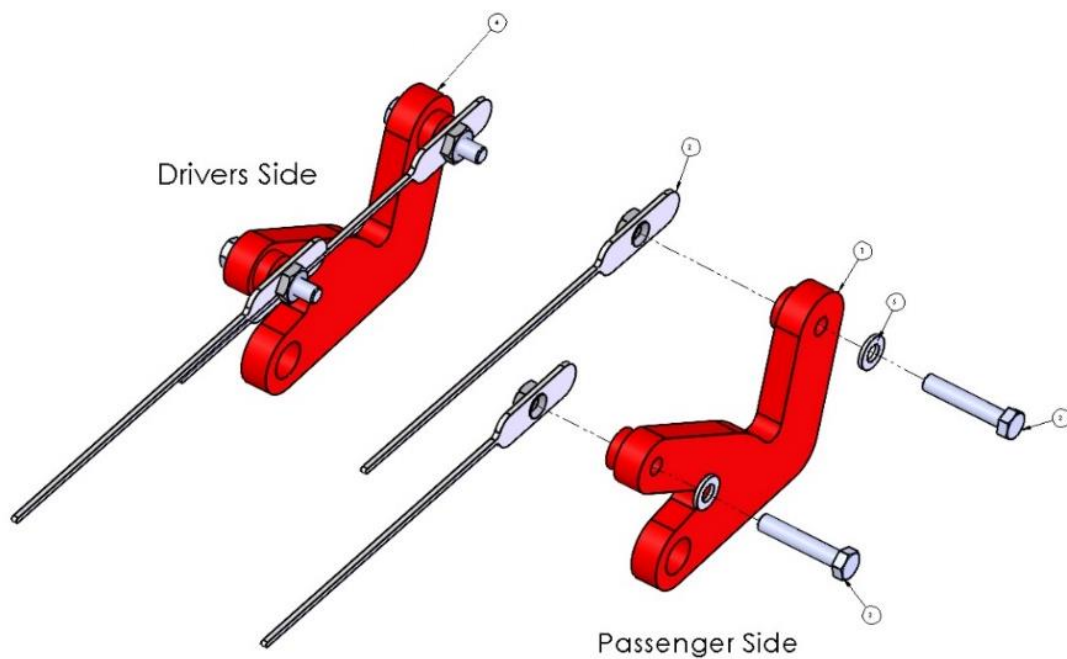
ITEM NO.	PART NUMBER	DESCRIPTION	QTY.
12	M12X30X1.75	BOLT M12 1.75 PITCH	8
13	04-0086	ASSY M10 ROOT NUT PLATE	2
14	M12 FW	M12 FLAT WASHER	16
15	M10X40X1.5	BOLT M10 X 40	2
16	M10FWX25	M10 FLAT WASHER X 25MM WIDE	6
17	M8X25 BHCS	M8X25 BUTION HEAD CAP SCREW Z/P	16
18	M8 FW X 22	FLAT WASHER 8MM LARGE	13
19	M5X16 CS	M5 COUNTERSUNK SCREW	10
20	M5 FN	M5 FLANGE NUT	21
21	M5X10 PSCREW	M5 X 10 PH SCREW	8
22	M6X20	BOLT M6 X 20	4
23	M6 FW	FLAT WASHER 6MM	4
24	M6 FN	FLANGE NUT M6	4
25	M8 FN	FLANGE NUT M8	3
26	SFFM18	Round plastic cap Kelvindale	4
27	M5X15 PSCREW	M5 X 15 PH SCREW	5
28	M10X30	M10 X 1.5 X 30MM BOLT	2
29	M12 FW X 37	M12 FLAT WASHER LARGE	12
30	M12 X 1.75 FN	M12 FLANGE NUT	2
31	M10 NYLOC	NYLOC SELF LOCKING NUT	2
32	M12 HD WASHER	M12 HD WASHER	2
33	M12X40X1.75	M12 X 40 X 1.75 BOLT	8
34	M12 Nyloc nut	M12 NYLOC NUT	14



Components and parts

Tow Hooks

ITEM NO.	PART NUMBER	Description	QTY.
1	04-0248L	Recovery Plate ASSY Passenger Side	1
2	04-0252	NUT PLATE ASSY M12 RECOVERY	4
3	M12X65X1.75	M12 X 65MM X 1.75 BOLT	4
4	04-0248R	Recovery Plate Drivers Side	1
5	M12 HD WASHER	M12 HD WASHER	4

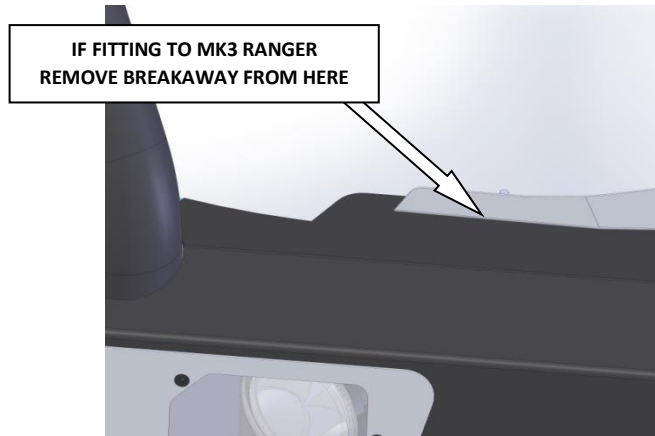


Tech pack parts kit

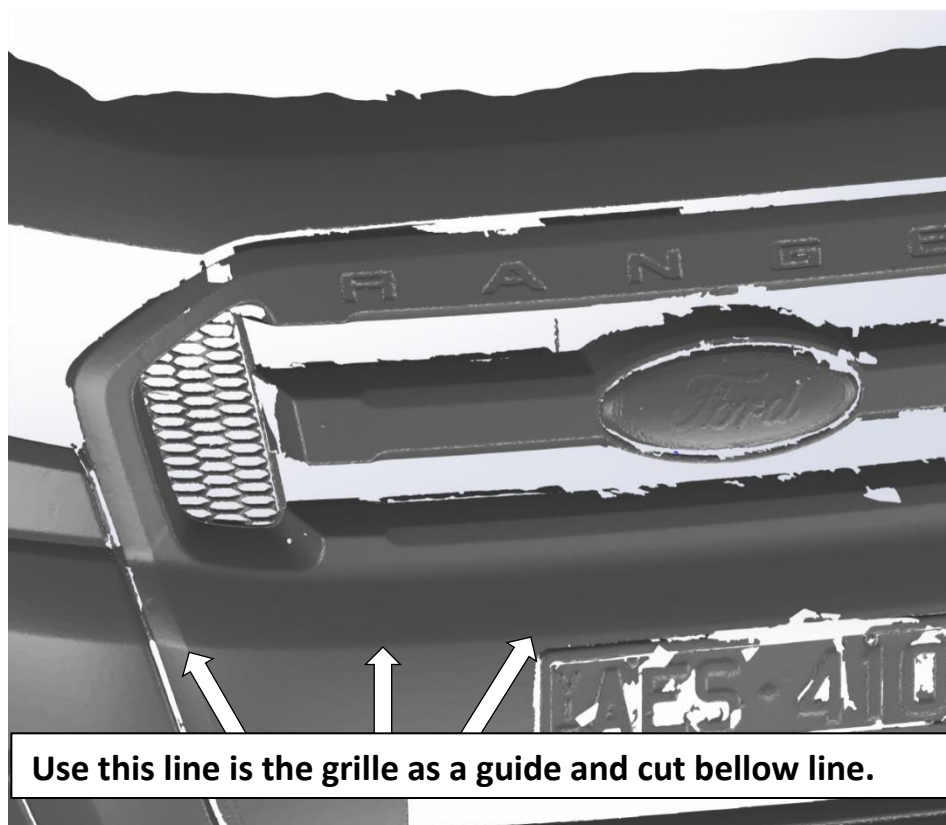
ITEM	DESCRIPTION	QTY
04-0713	Polycarb Cover	1
03-0798	2.0 M/S PX3 Ranger Wire	1
M6HCZ	M6 Hex Coupler	3
M6X20BHCS	M6 X 20 Button Head Cap Screws	3
M6X12BHCS	M6 X 12 BHCS z/p	3
CSSM516S	M5 X 16 CSK Socket Screw	4
M5FN	M5 Flange Nut	4
04-0720-MS	1.6 M/S Number Plate	1

Please Note

Please note first bar image is early PX and second image is current PX3 model. Winch spacer may be required for PX3 depending on winch motor size. Tube kit FR-FB-PXCRAWLTUBE-ASM0 is optional. It is recommended that a slim line number plate is fitted.



Note: Even though these bars do not require a bumper cut it will be necessary to cut the grille on the Ranger PX2 version. Mark grille as noted bellow. The grille can be taken apart in sections via removal of screws behind grille. This is recommended to make cutting easier. De-burr all sharp edges when done.



Step 1

Remove plastic panels under bumper, bumper, fog lights if fitted, grille and steel bumper support. Remove plastic bumper mounts from guard sections. Retain bolts from bumper support. Remove front bash plate.



Step 2 If Tech Pack Fitted

If radar is fitted unplug and remove from vehicle. Remove its mounting bracket and remove the studs from the radar unit. If parking sensors are fitted remove from original bar and fit to bullbar using sensor mounting kit. Place sensor in a horizontal position.



Step 2A

Remove radar unit from housing using a trim removal tool. Be careful not to damage sensor mounting tabs.



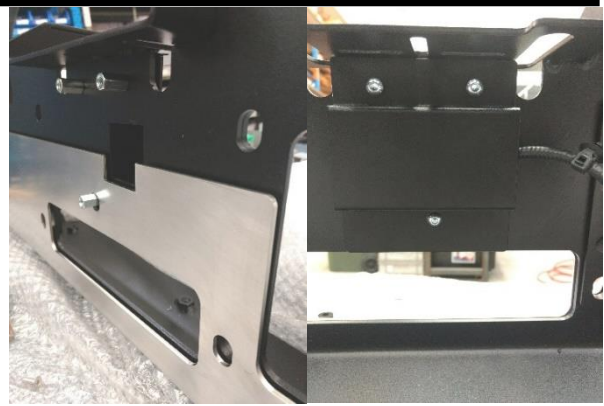
Step 2B

Fit middle fascia panel to the bar and pass sensor loom through the large square hole in the front of the bumper.



Step 2C

Attach 3x M6 Threaded Couplers to the front of the bar with 3x M6x12 BHCS from the rear. Fit Loom Cover plate at the same time paying attention to neatly running the loom through the channel.



Step 2D

Attach Sensor Module to the Threaded Couplers using M6x20 BHCS and M6 washers.



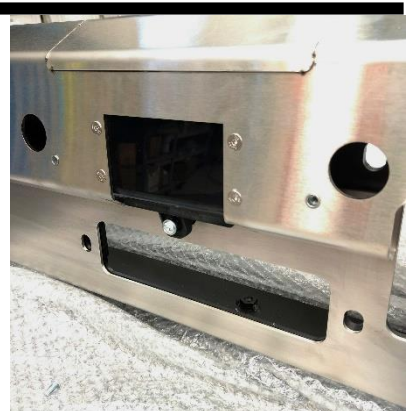
Step 2E

Fit Polycarbonate Sensor Cover to the Upper Fascia panel using M5 Countersunk Set Screws and flange nuts. Use black screws for black panel and stainless steel screws for stainless steel panel.



Step 2F

Fit upper fascia panel as per instructions in step 7 in main instructions section. If no winch is being fitted, fit number plate to upper fascia using M5 fasteners and installed nutserts.



Note:

If a winch is being fitted, check clearance between the winch rope on the drum and the loom cover plate installed on the inside of the bar. If more clearance is required fit supplied winch spacers between the winch and the bar.



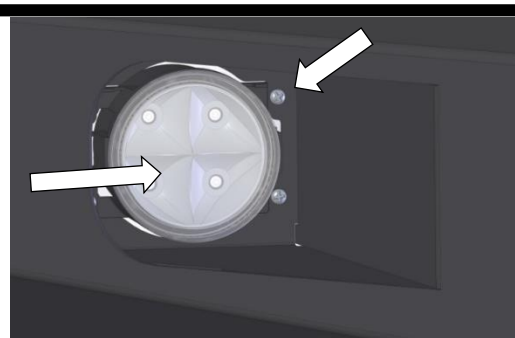
Step 3

Remove any plastic air deflectors near chassis rails. Loosely fit impact absorbers to bar using original M10 bolts and supplied M12 x 40 bolts, two small M12 flat washers per bolt and an M12 Nyloc nut. Place captive nut plate through front of chassis and secure using M10 x 30 bolt and flat washer through side of chassis.



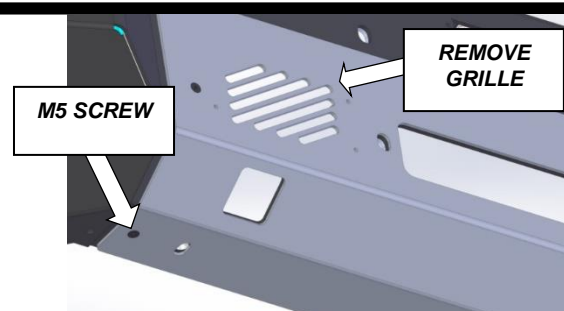
Step 4

Fit supplied fog lights to bar using M5 x 10 Phillips head screws and M5 flange nuts. If the vehicle does not have factory fog lights install the supplied wiring loom.



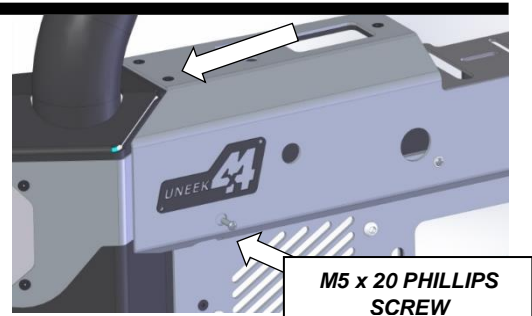
Step 5

Fit lower stainless panel to bar using 4 x M5 countersunk screws and M5 flange nuts. If fitting radar to PX2 Ranger punch out grille section and drill the three holes to 8.5mm.



Step 6

Fit upper panel assembly using 6 x M5 countersunk screws and flange nuts and 3 x M5 x 15 Phillips head screws through the front face of panel with flange nuts.



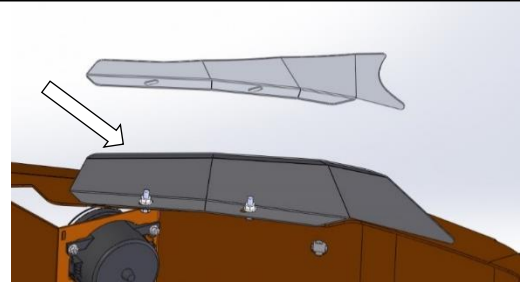
Step 7

If fitting optional tube kit do so now to holes just outside stainless top panel.



Step 8

Fit correct version headlight brackets to wing **loosely** with M6 x 20 bolts, flat washers and M6 flange nuts.



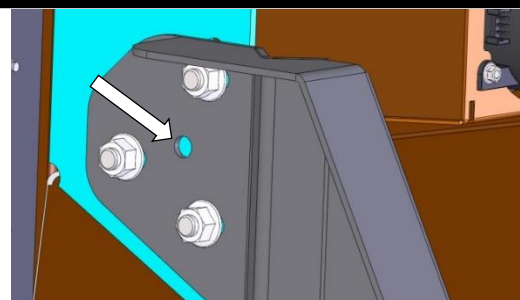
Step 9

Fit the bar to vehicle using M12 x 40 bolts, large flat washers and M12 Nyloc nuts through slotted holes in mounts. Note small M12 Heavy duty washer will be required for top inside position as Large washer will not fit. Adjust bar for an even fit and **no less** than 10mm clearance between guard and top of bar. Tighten bolts just so bar does not move.



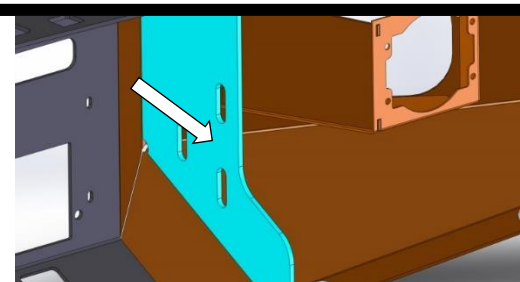
Step 10

When happy with the position of the bar locate the holes in the mounting brackets that are in the middle of all the mounting bolts. Mark this hole with a white marking pen. **Location of bar will be permanent once this pinning hole is used!**



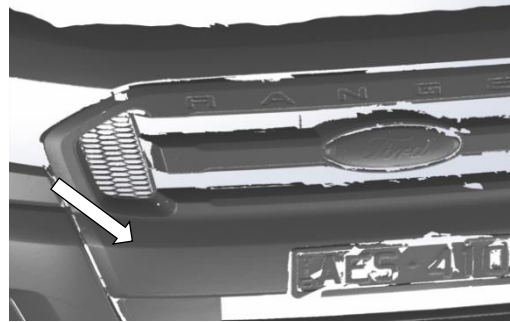
Step 11

Remove bar from vehicle and drill this marked hole out to 12mm.



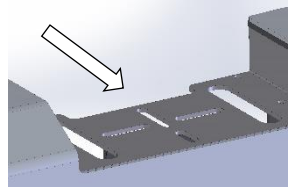
Step 12

At this stage cut the PX3 grille using the larger image at start as a guide. De burr when complete and fit back to vehicle.



Step 13

Fit the winch to bar making sure the clutch handle is facing forward with the winch mounting points. Fit control box to recess in bar. Before fitting bar it is recommended to paint surfaces below the lights etc satin black.



Check there is enough gap between winch rope and loom cover if tech pack model.

Step 14

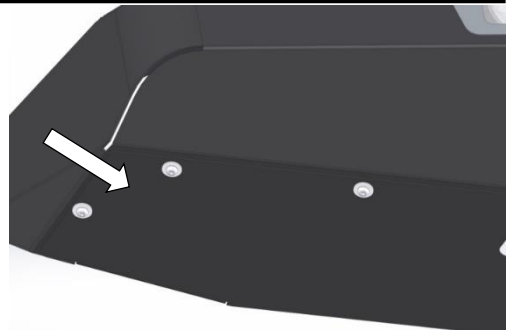
With the help of another person lift bar into position and secure using M12 bolts, large flat washers and M12 Nyloc nuts to bar mounts. Insert pinning bolts to stop bar moving around too much. Adjust the brackets under the headlights and tighten the bolts. Place plastic plugs in sensor holes. Finish the install of all wiring and fit number plate.



M12-77Nm M10-44Nm M6-9Nm

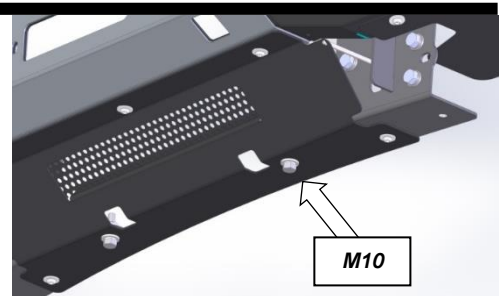
Step 15

Attach outer wing guards using M8 button head cap screws and M8 flat washers. Mark a line across plastic inner guard and cut with the same profile as the guard. Flip plastic panel over guard lip when complete.



Step 16

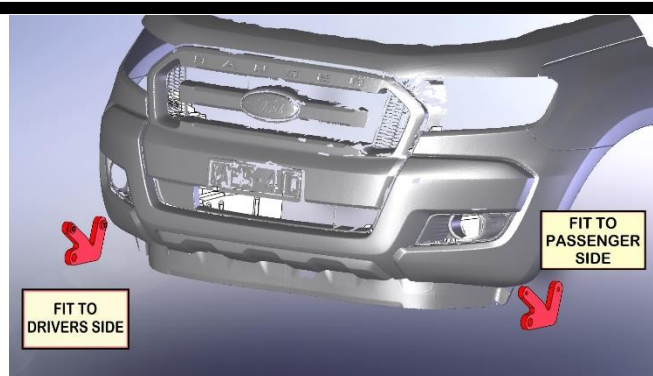
Fit center panel using M8 button head cap screws (outer) and M8 washers. Place M10 bolts, washers and nut in the center lower holes as shown. Clean bar with a soft rag when complete.



M10-44Nm

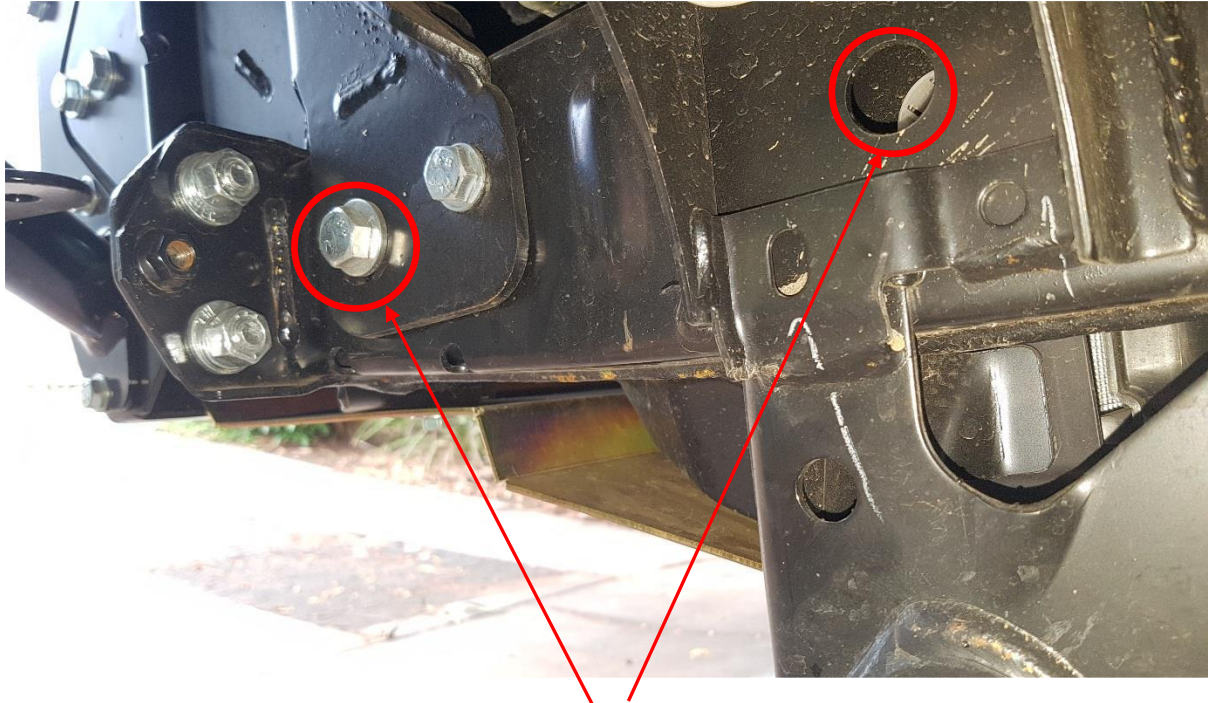
Step 17

Ensure the drivers side bracket is fitted to the drivers side of the car and vice versa.



Step 18

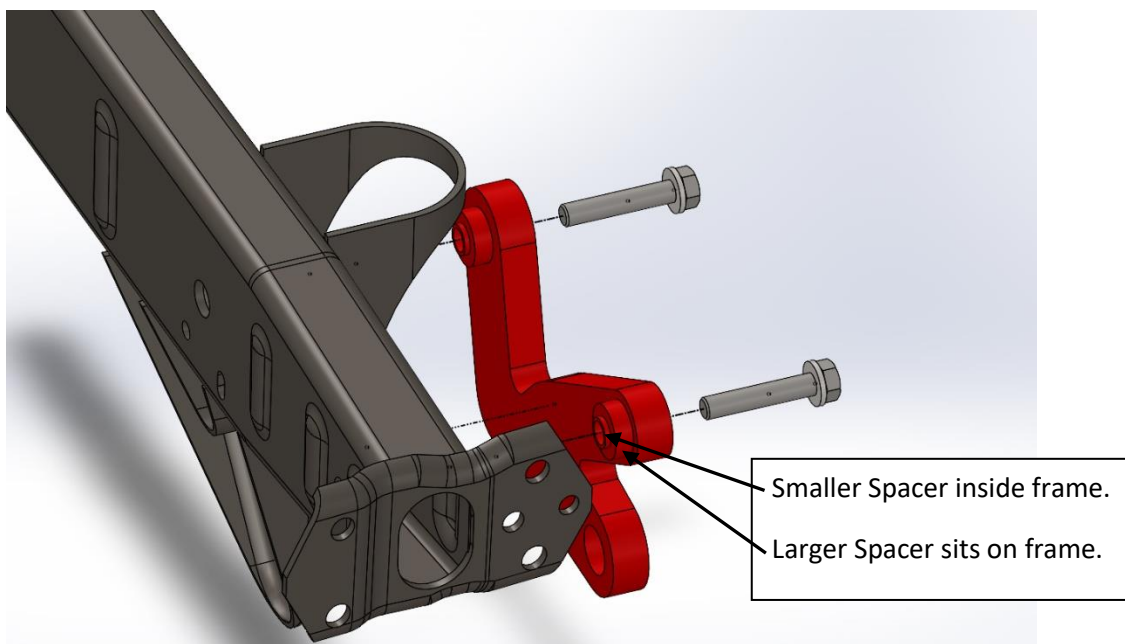
Passenger side is shown



These holes in the frame are where the recovery points bolt through.

Step 19

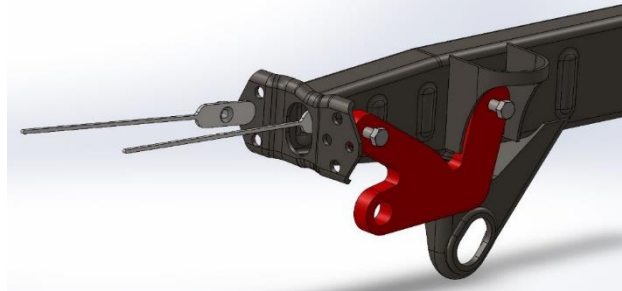
When fitting the recovery points the smaller locating spacer must fit inside the holes in the chassis rail. The larger spacers sit on the frame and allow the recovery points clearance.



Step 20

M12 x 65 bolts go into M12 flat washer and then into the holes in chassis onto nut plates. The nut plates are inserted into the chassis rail. Ensure to snap off nut plate skewers when the bolts are torqued to the correct setting (77Nm).

HINT: Hold nut plate that sits the furthest back with a pair of vice grips whilst fitting bolt.



M12-77Nm

Step 21

Repeat the Process for the Drivers side.

Ensure that the spacers fit inside the holes in chassis rails. Failure to do so may cause incorrect loading and part failure!

Step 22

If the vehicle contains a keyless entry antenna under the rear of the driver's side guard. Disconnect the antenna, trim of the guard so that it fits within the wing guard of the bar and reattach the antenna higher up on the guard. Use the bolt hole and some double-sided tape to reattach antenna.



Finished Product



Revised: 19/07/2021

***Australia's Best
Off Road Products
Created... Not Cloned***

20 Gateway Drive, Carrum Downs, VIC, 3201

1300 806 952

www.uneek4x4.com.au

