

UNEEK44
AUSTRALIA
OFF ROAD ACCESSORIES

SKU: GU-LTB-R-ASM0



Fitting Instructions
GU Patrol Y61/80 Series
Gutter Mount LED Light Bar

Australia's Best Off Road Products
Created... Not Cloned

Contents

WHY UNEEK	3
IMPORTANT INFORMATION	4
COMPONENTS AND PARTS	5
STEP 1	6
STEP 2	6
STEP 3	6
FINISHED PRODUCT	7

Why Uneek

Australian Designed and Built

All our products are designed and manufactured right here in Australia, allowing us to have better lead times and better quality control than companies manufacturing overseas. By supporting us you're supporting to grow the Australian economy and our brand.

Uneek Styling

We do not design our bars to look the same across the vehicle range. We fully develop our own product to individually suit each vehicle. We take time in designing from scratch and then test all our bars to comply with all relevant ADRs and Australian Standards.

Lightweight Through Smart Engineering

Having a steel bar doesn't mean you have to add more weight than is required to the front of your vehicle. Our engineering practises ensure we have the right protection, designed the right way to ensure protection is at its maximum and weights at its minimum.

Proven Off Road

We take our products out and test them right here in the heart of our country in our Australian conditions so we know our products can withstand anything you throw at them.

Increased Approach Angles

Our bars are designed to give you the best advantage while off road, with increased approach angles means you can tackle those tough and steep angles better than you could with the original setup or other alternatives.

Warranty

Uneek 4x4 back itself as Australia's leading steel bull bar manufacturer. This is why we provide you with the best steel bar warranty in Australia - 5 years.

Important Information

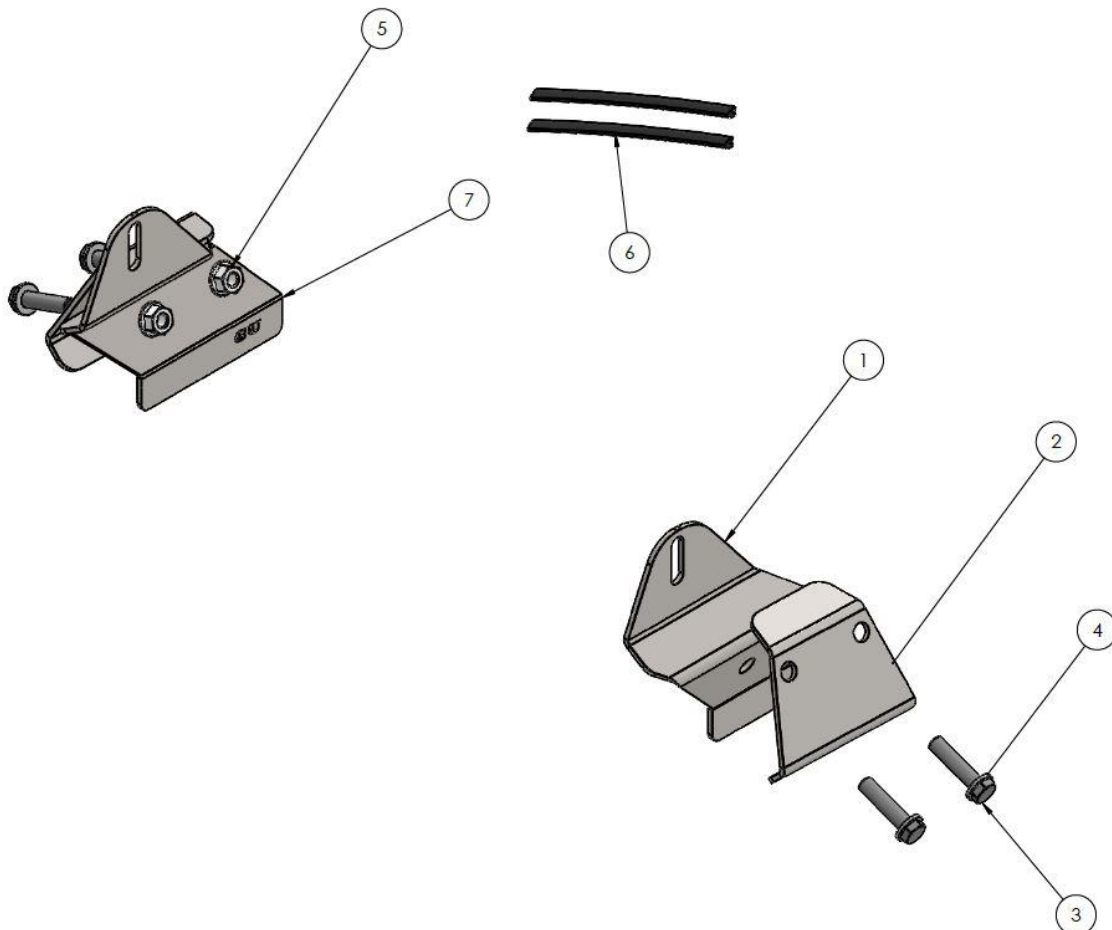


PLEASE READ BEFORE INSTALLATION.

- This product must be installed exactly as per these instructions using only hardware supplied.
- Take a few moments to read instructions thoroughly before beginning work.
- In the event of damage to any component please contact Uneek 4x4 in regards to repair/replacement of components.
- These brackets are designed to work with most 50" end mounted light bars.
- Do not use this product for any vehicle make or model other than that specified on these instructions.
- This product and its fixings must not be modified in any way unless stated in these fitting instructions.
- These instructions are correct at time of publication. Uneek 4x4 cannot be held responsible for the impact of any changes subsequently made by the vehicle manufacturer.
- During installation it is the duty of the installer to check correct operation/clearances of all components.
- Installation time: 15 min.
- If you experience excessive whistling from the light bar once mounted you can try and move the light bar back along the gutters to reduce the noise or purchase some ¼" irrigation hose and secure it inside the fins of the light bar to reduce the noise. In most cases this is not necessary.

Components and parts

ITEM NO.	PART NUMBER	DESCRIPTION	QTY.
1	03-0243L	Gutter mount LHS GU	1
2	03-0117	gutter clamp	2
3	M8 X 35 SS	M8 X 35 HEX BOLT SS	4
4	M8 WASHER SS	M8 WASHER SS	4
5	M8 FN	FLANGE NUT M8	4
6	PINCH WELD BLACK 100MM	PINCH WELD BLACK 100MM	2
7	03-0243R	Gutter mount RHS GU	1
8	SL1	180 X 180 X 140 SHIPPER	1



Step 1

Fit pinch weld on to the bottom of the gutter mount brackets then place them up onto the gutter. Feed M8 bolts through clamp and up through the gutter mount. Loosely do up flange nuts to keep mount in place.

Repeat for other side.



Step 2

Fit light bar on to slot and torque up nuts or bolts (depending on how your light bar mounts).

Align mounts in a spot your happy with and torque up clamp bolts until brackets is firmly secure. Don't over tighten as you are relying on the steel springing back from the clamp to hold it all in place.

Repeat for other side.



Step 3

Run your wires down the A pillar (best spot is behind your snorkel if you have one) and under the bonnet.



Finished Product



Revised: 05/08/2019

***Australia's Best
Off Road Products
Created... Not Cloned***

20 Gateway Drive, Carrum Downs, VIC, 3201

1800 806 952

www.uneek4x4.com.au

