

UNEK4
AUSTRALIA
OFF ROAD ACCESSORIES

SKU: WJ-FB-ASM0



Fitting Instructions

Jeep Grand Cherokee WJ/WG 1999-2004

Frontal Protection Bar

**Australia's Best Off Road Products
Created... Not Cloned**

Contents

WHY UNEEK	3
IMPORTANT INFORMATION	4
COMPONENTS AND PARTS	5
STEP 1	6
STEP 2	6
STEP 3	6
STEP 4	6
STEP 5	7
STEP 6	7
STEP 7	7
STEP 8	7
STEP 9	8
STEP 10	8
STEP 11	8
STEP 12	8
STEP 13	9
STEP 14	9
STEP 15	9
STEP 16	9
STEP 17	10
STEP 18	10
STEP 19	10
STEP 20	10
STEP 21	11
STEP 22	11
STEP 23	11
FINISHED PRODUCT	12

Why Uneek

Australian Designed and Built

All our products are designed and manufactured right here in Australia, allowing us to have better lead times and better quality control than companies manufacturing overseas. By supporting us you're supporting to grow the Australian economy and our brand.

Uneek Styling

We do not design our bars to look the same across the vehicle range. We fully develop our own product to individually suit each vehicle. We take time in designing from scratch and then test all our bars to comply with all relevant ADRs and Australian Standards.

Lightweight Through Smart Engineering

Having a steel bar doesn't mean you have to add more weight than is required to the front of your vehicle. Our engineering practises ensure we have the right protection, designed the right way to ensure protection is at its maximum and weights at its minimum.

Proven Off Road

We take our products out and test them right here in the heart of our country in our Australian conditions so we know our products can withstand anything you throw at them.

Increased Approach Angles

Our bars are designed to give you the best advantage while off road, with increased approach angles means you can tackle those tough and steep angles better than you could with the original setup or other alternatives.

Warranty

Uneek 4x4 back itself as Australia's leading steel bull bar manufacturer. This is why we provide you with the best steel bar warranty in Australia - 5 years.

Important Information



PLEASE READ BEFORE INSTALLATION.

- When installed in accordance with these instructions, the front protection bar does not affect the operation of the vehicles SRS airbags.
- This product must be installed exactly as per these instructions using only hardware supplied.
- Take a few moments to read instructions thoroughly before beginning work.
- In the event of damage to any bar component please contact Uneek 4x4 in regards to repair/replacement of components.
- Do not use this product for any vehicle make or model other than that specified on these instructions.
- Do not remove labels from this product.
- This product and its fixings must not be modified in any way unless stated in these fitting instructions.
- The installation of this product is recommended for trained personnel.
- These instructions are correct at time of publication. Uneek 4x4 cannot be held responsible for the impact of any changes subsequently made by the vehicle manufacturer.
- During installation it is the duty of the installer to check correct operation/clearances of all components.
- Supplied tow points are designed as tow points only. Use in a recovery operation will be at operator's risk.
- Installation time: 3-4 hours.
- Vehicle specific notes: A flip up license plate kit may also be required.



EYE & EAR PROTECTION REQUIRED



DRILLING REQUIRED



TWO PERSON LIFT REQUIRED



TORQUE SETTING



CUTTING OR GRINDING REQUIRED

FASTENER TORQUE SETTINGS:

M6 – 9Nm (4lb ft)

M8 – 22Nm (16lb ft)

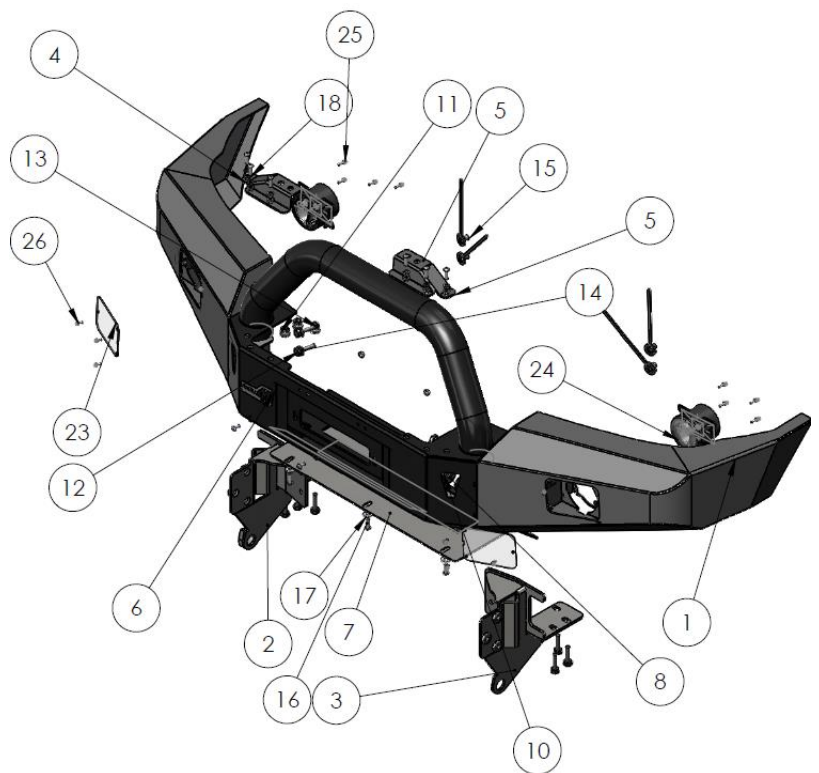
M10 – 44Nm (32lb ft)

M12 – 77Nm (57lb ft)

TOOLS REQUIRED: Basic tool kit with spanners, Allen keys, Torque Drivers and socket set. Male and female spade terminals. Power Drill, 12mm drill bit, center punch and hammer. Angle grinder or Air hacksaw. Hammer and knife.

Components and parts

ITEM NO.	PART NUMBER	DESCRIPTION	QTY.
1	WJ-FB-ASM1	WJ front bar weldment	1
2	WJ-FB-ASM3R	WJ impact absorber	1
3	WJ-FB-ASM3L	WJ impact absorber	1
4	03-0300R	BRACKET LIGHT MOUNT WH	1
5	03-0300L	BRACKET LIGHT MOUNT WH	1
6	U4X4-LOGO PLATE-1	LOGO PLATE-1	1
7	WJ-FB-ASM4	Centre panel	1
8	M12 FW X 37	M12 FLAT WASHER LARGE	6
9	M12 SPRING WASHER	M12 SPRING WASHER	6
10	M12X30X1.75	BOLT M12 1.75 PITCH	6
11	M10 HD WASHER	M10 HD WASHER Z/P	10
12	M10 X 40 X 1.5	BOLT M10 X 40	10
13	M10 FN	M10 Flange nut	6
14	M10 SPRING WASHER	M10 Spring Washer	4
15	04-0086	ASSY M10 ROOT NUT PLATE	4
16	M8X25 BHCS	M8X25 BUTTON HEAD CAP SCREW Z/P	9
17	M8 FW X 22	FLAT WASHER 8MM LARGE	3
18	M8 WASHER	M8 WASHER	6
19	M8 SW	M8 SPRING WASHER	6
20	m6 washer	m6 washer	2
21	M6 x 16 PAN HEAD	M6 x 16 PAN HEAD Z/P PHIL	2
22	M6 FLANGE NUT	M6 FLANGE NUT	2
23	12-0011	COVER FOG GV	2
24	CARWAY DRL	DRL FOG LIGHT	2
25	M5X15 PSCREW	M5 X 15 PH SCREW	8
26	M5X10 PSCREW	M5 X 10 PH SCREW	6



Step 1

You will begin by removing the factory bumper and ensuring you have all components for the bull bar before you begin installation.



Step 2

To remove factory bumper you will need to undo fasteners on the inside of the wheel well as shown. Do this for both sides.



Step 3

Undo all fasteners holding the top grille on.



Step 4

Remove clips on under bumper.



Step 5

Undo the fasteners through grille.



Step 6

Pull bumper away from Jeep starting at the outer edges.



Step 7

Unplug factory fog light loom.



Step 8

With a hammer, you will need to fold over the small lip on the inner edge of the front cross member. Just the inside edge not top bottom or outside.



Step 9

Also flatten area around hole as shown.



Step 10

Loosely fit impact brackets LH and RH to vehicle using M10 bolts and flange nuts feed up from underneath.



Step 11

Measure the mounting surfaces on the bull bar and ensure you have a sufficient gap between impact absorbers to fit bar on and tighten up the lower bolts. You can then mark 2 holes per side to be drilled as shown.



Step 12

Drill cross member out to 12mm.



Step 13

Fit impact absorbers back on to the Jeep. After the M10 bolts from the underside are loosely fit, you can feed nut plate up through access holes and feed M10 bolts spring washers and flat washer through these.



Step 14

Torque up all bolts on both sides.



Step 15

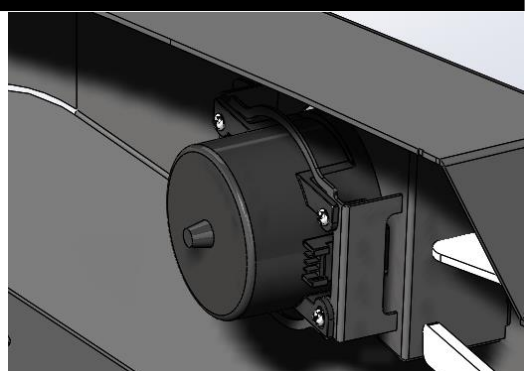
If you have a later model WJ/WG you will need to cut the upper part of the grille off the bumper with an air hacksaw, or angle grinder. Do this now then refit the grille.



Step 16

Fit Fog lights to inside of the bar with M5x15 pan head screws.

Wire fog lights into existing fog light loom by splicing wires using electrical terminals that can later be removed if bar needs to be taken off. If no factory fog lights have been fitted you will need to run a new loom and switch inside the car.



Step 17

If no winch is fitted you can lift the bull bar on to the vehicle now. If you are fitting a winch you will need to mount the winch to the bull bar prior to lifting it on the vehicle. Use the help of a friend to lift the bar on and feed M12 bolts with spring washers and large flat washers through into impact absorber.



Step 18

Torque up all bolts.



Step 19

If a winch is fitted run your wires now to the battery, then fit new skid plate. Use M8 button head cap screws on the bottom of the bar and reuse factory hardware on radiator support to secure the back end of plate. Torque up all bolts.



Step 20

If fitting driving lights fit light brackets now with M8 button head cap screws, spring washers and flat washers. If not fitting driving lights you can leave these off.



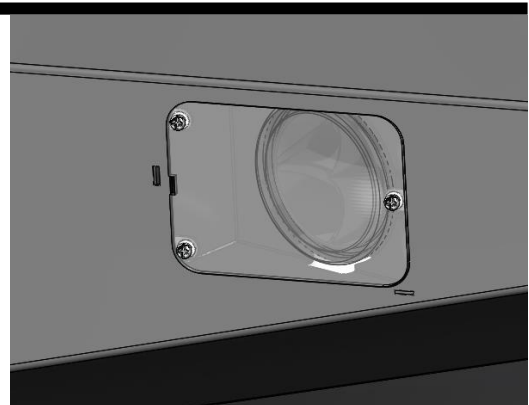
Step 21

Trim the inner wheel liner and to keep it neat and tuck behind wing of bull bar.



Step 22

Fit fog light poly carbonate covers on to the bar with M5 x 10 pan screws.



Step 23

If fitting a winch we suggest putting a number plate flip from Uneek 4x4 on the front to access the cable/rope, otherwise fit number plate directly onto the front.



Finished Product



Revised: 30/07/2019

***Australia's Best
Off Road Products
Created... Not Cloned***

49-75 Pacific Drive, Keysborough, VIC, 3173

1300 806 952

www.uneek4x4.com.au

