

**UNEK4**  
AUSTRALIA  
OFF ROAD ACCESSORIES

**SKU: WK2-FB-17CEX-ASM0**



## ***Fitting Instructions***

**Jeep WK2 Grand Cherokee 2017-2022**

**Commander Bull Bar**

**Australia's Best Off Road Products  
Created... Not Cloned**

# Contents

---

<b>WHY UNEEK</b>	<b>3</b>
<b>IMPORTANT INFORMATION</b>	<b>4</b>
<b>COMPONENTS AND PARTS</b>	<b>5</b>
<b>COMPONENTS AND PARTS</b>	<b>6</b>
<b>COMPONENTS AND PARTS</b>	<b>7</b>
<b>COMPONENTS AND PARTS</b>	<b>8</b>
<b>PLEASE NOTE</b>	<b>9</b>
<b>STEP 1</b>	<b>10</b>
<b>STEP 2</b>	<b>10</b>
<b>STEP 3</b>	<b>10</b>
<b>STEP 4</b>	<b>10</b>
<b>STEP 5</b>	<b>11</b>
<b>STEP 6</b>	<b>11</b>
<b>STEP 7</b>	<b>12</b>
<b>STEP 8</b>	<b>12</b>
<b>STEP 9</b>	<b>12</b>
<b>STEP 10</b>	<b>12</b>
<b>STEP 11</b>	<b>13</b>
<b>STEP 12</b>	<b>13</b>
<b>STEP 13</b>	<b>13</b>
<b>STEP 14</b>	<b>14</b>
<b>STEP 15</b>	<b>14</b>
<b>STEP 16</b>	<b>14</b>
<b>STEP 17</b>	<b>14</b>
<b>STEP 18</b>	<b>15</b>
<b>STEP 19</b>	<b>15</b>
<b>STEP 20</b>	<b>15</b>
<b>STEP 21</b>	<b>15</b>
<b>STEP 22</b>	<b>16</b>
<b>STEP 23</b>	<b>16</b>
<b>STEP 24</b>	<b>16</b>
<b>STEP 25</b>	<b>16</b>
<b>STEP 26</b>	<b>17</b>
<b>STEP 27</b>	<b>17</b>
<b>STEP 28</b>	<b>17</b>
<b>STEP 29</b>	<b>17</b>
<b>STEP 30</b>	<b>18</b>
<b>STEP 31</b>	<b>18</b>
<b>STEP 32</b>	<b>18</b>
<b>STEP 33</b>	<b>18</b>
<b>STEP 34</b>	<b>19</b>
<b>STEP 35</b>	<b>19</b>
<b>STEP 36</b>	<b>19</b>
<b>STEP 37</b>	<b>20</b>
<b>STEP 38</b>	<b>20</b>
<b>STEP 39</b>	<b>20</b>
<b>FINISHED PRODUCT</b>	<b>21</b>

# ***Why Uneek***

---

## ***Australian Designed and Built***

All our products are designed and manufactured right here in Australia, allowing us to have better lead times and better quality control than companies manufacturing overseas. By supporting us you're supporting to grow the Australian economy and our brand.

## ***Uneek Styling***

We do not design our bars to look the same across the vehicle range. We fully develop our own product to individually suit each vehicle. We take time in designing from scratch and then test all our bars to comply with all relevant ADRs and Australian Standards.

## ***Lightweight Through Smart Engineering***

Having a steel bar doesn't mean you have to add more weight than is required to the front of your vehicle. Our engineering practises ensure we have the right protection, designed the right way to ensure protection is at its maximum and weights at its minimum.

## ***Proven Off Road***

We take our products out and test them right here in the heart of our country in our Australian conditions so we know our products can withstand anything you throw at them.

## ***Increased Approach Angles***

Our bars are designed to give you the best advantage while off road, with increased approach angles means you can tackle those tough and steep angles better than you could with the original setup or other alternatives.

## ***Warranty***

Uneek 4x4 back itself as Australia's leading steel bull bar manufacturer. This is why we provide you with the best steel bar warranty in Australia - 5 years.

# Important Information

---



## PLEASE READ BEFORE INSTALLATION.

- When installed in accordance with these instructions, the front protection bar does not affect the operation of the vehicles SRS airbags.
- This product must be installed exactly as per these instructions using only hardware supplied.
- Take a few moments to read instructions thoroughly before beginning work.
- In the event of damage to any bar component please contact Uneek 4x4 in regards to repair/replacement of components.
- Do not use this product for any vehicle make or model other than that specified on these instructions.
- Do not remove labels from this product.
- This product and its fixings must not be modified in any way unless stated in these fitting instructions.
- The installation of this product is recommended for trained personnel.
- These instructions are correct at time of publication. Uneek 4x4 cannot be held responsible for the impact of any changes subsequently made by the vehicle manufacturer.
- During installation it is the duty of the installer to check correct operation/clearances of all components.
- Supplied tow points are rated to 3500kg as tow points only. Use in a recovery operation will be at operator's risk.
- Installation time: 5-6 Hours.
- Vehicle specific notes: A vehicle specific flip up license plate kit is required for vehicles fitted with adaptive cruise control.



### EYE & EAR PROTECTION REQUIRED



### DRILLING REQUIRED



### TWO PERSON LIFT REQUIRED



### TORQUE SETTING



### CUTTING OR GRINDING REQUIRED

#### FASTENER TORQUE SETTINGS:

M6 – 9Nm (4lb ft)

M8 – 22Nm (16lb ft)

M10 – 44Nm (32lb ft)

M12 – 77Nm (57lb ft)

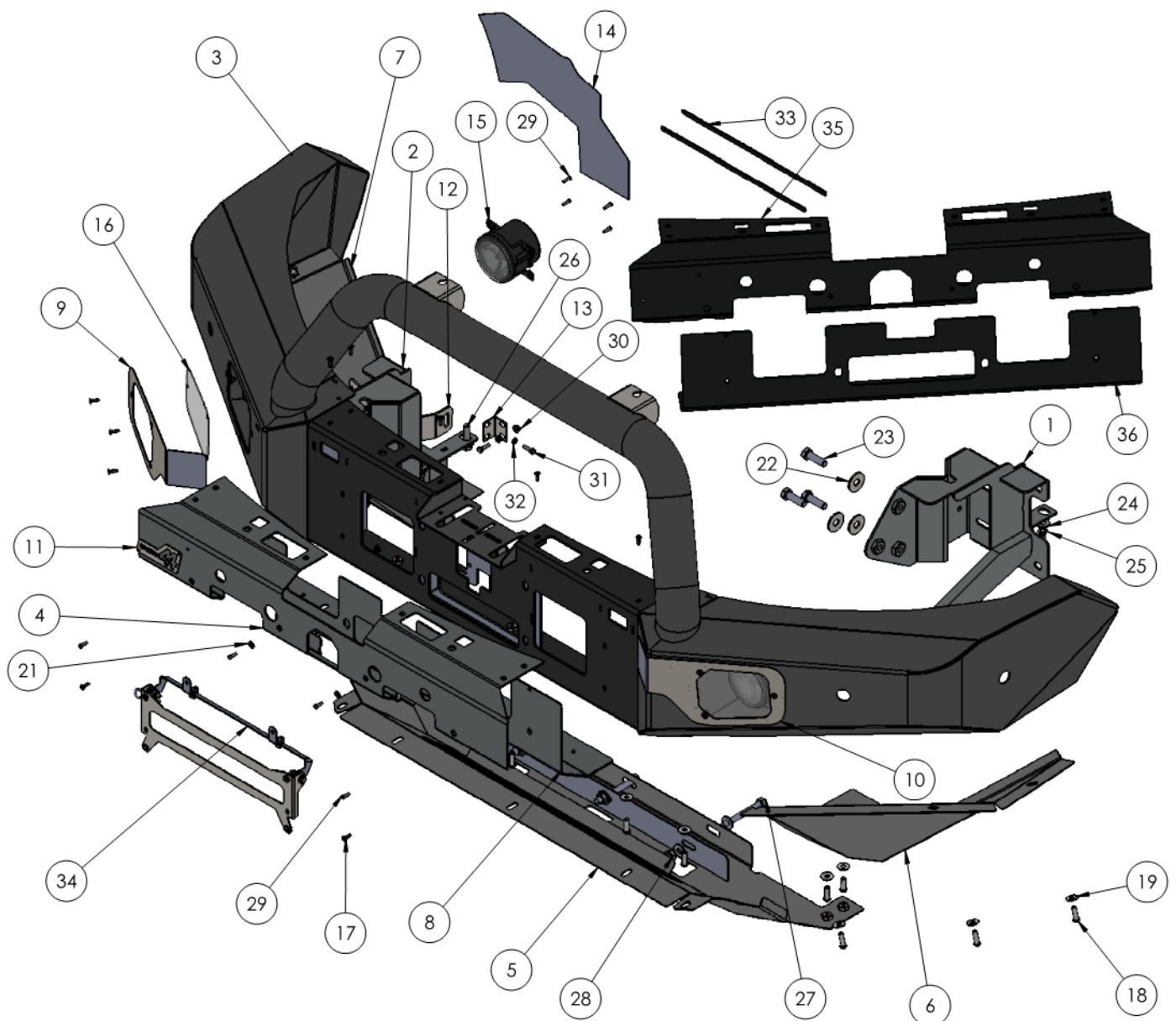
**TOOLS REQUIRED:** Basic tool kit. Soldering iron or electrical in-line connectors.

Male and female spade terminals. Jigsaw or power hacksaw.

Drill and drill bit kit. Black Automotive Polyurethane Adhesive (Sikaflex 227 Recommended), Electrical Insulation Tape.

# Components and parts

## Single Hoop Assembly



# Components and parts

## Single Hoop Assembly

### MAIN PARTS

ITEM NO.	PART NUMBER	DESCRIPTION	For Drawing/ QTY.
1	03-0072L	BRACKET ASSY IMPACT WK 14	1
2	03-0072R	BRACKET ASSY IMPACT WK 14	1
3	WK2-FB-17CE-ASM1	Jeep Grand Cherokee Commander Bar Weldment	1
4	09-0182	Panel Stainless Upper WK2 2017 Commander	1
5	09-0186	Center Underpan ASSY WK2 2017 Commander	1
6	09-0180L	Side Underpan LHS WK2 2017 Commander	1
7	09-0180R	Side Underpan RHS WK2 2017 Commander	1
8	09-0184	Panel Stainless Lower WK2 2017 Commander	1
9	09-0188R	Light Facia LHS WK2 2017 Commander	1
10	09-0188L	Light Facia LHS WK2 2017 Commander	1
11	U4X4-LOGO PLATE- 1	LOGO PLATE-1	1
12	WK2-FB-35	2011 AIR SUSPENSION BRACKET	1
13	JK-RB-B-17	STEP TIE IN	2
14	WK2-FB-17CEC-BCT	JEEP WK2 MY17+ BUMPER CUT TEMPLATE A3 PRINT	1
15	CARWAY DRL	DRL FOG LIGHT	2
16	12-0026	COVER PC FOG LIGHT CENTURY	2

### SMALL PARTS KIT

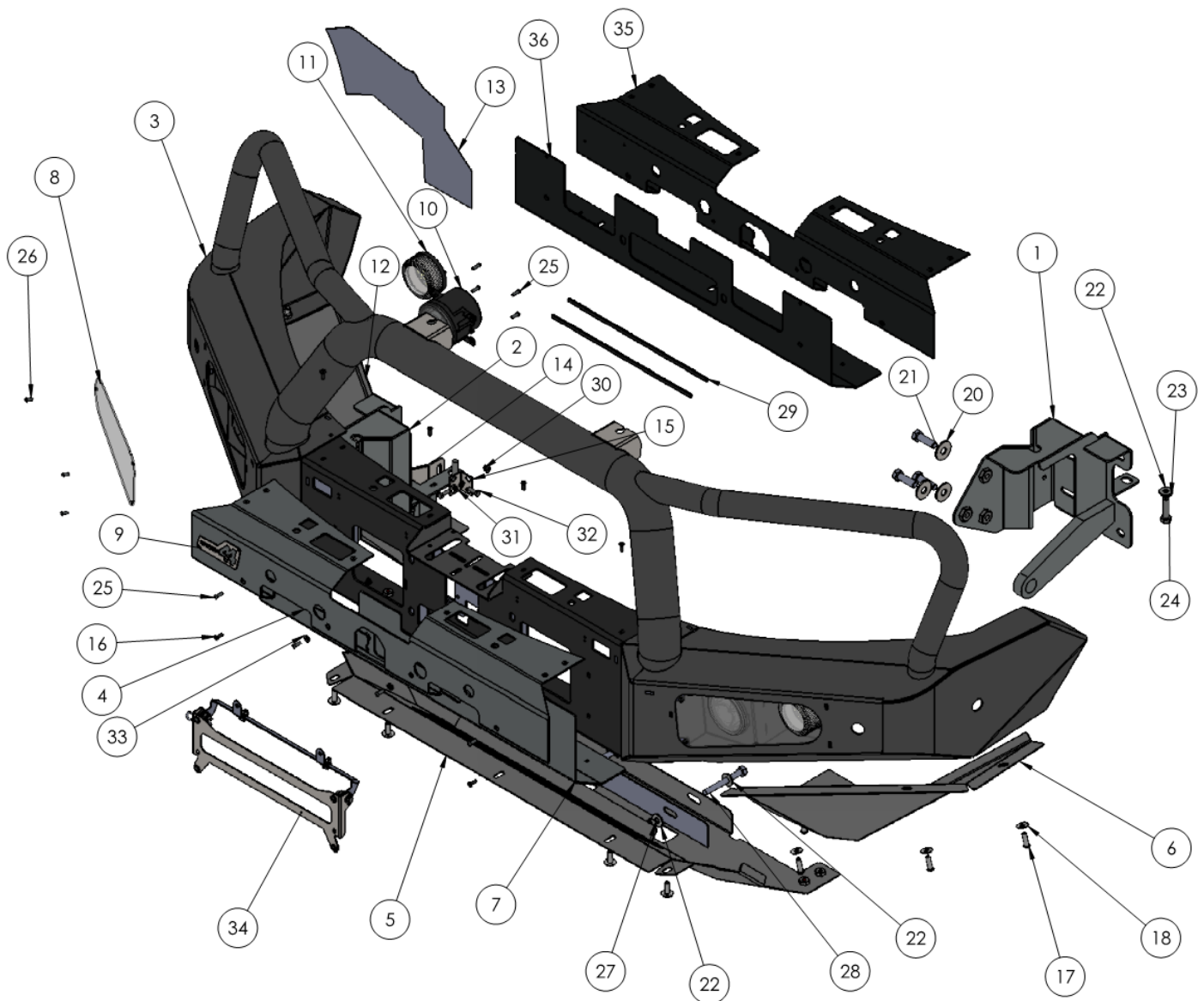
ITEM NO.	PART NUMBER	DESCRIPTION	For Drawing/ QTY.
17	M5X16 CS	M5 COUNTERSUNK SCREW	16
18	M8X25 BHCS	M8X25 BUTTON HEAD CAP SCREW Z/P	15
19	M8 FW X 22	FLAT WASHER 8MM LARGE	15
20	M5 FN	M5 FLANGE NUT	12
21	m5 washer	M5 washer	2
22	M12 FW X 37	M12 FLAT WASHER LARGE	6
23	M12X40X1.75	M12 X 40 X 1.75 BOLT	6
24	M10FWX25	M10 FLAT WASHER X 25MM WIDE	10
25	M10SW	M10 SPRING WASHER	4
26	M10X40X1.5	BOLT M10 X 40	4
27	M10x1.5X90	M10 X 1.5 X 90MM BOLT	3
28	M10X1.5N	M10 X 1.5 NUT	3
29	M5X15 PSCREW	M5 X 15 PH SCREW	12
30	M6 FN	FLANGE NUT M6	4
31	M6 x 20	M6 X 20 HEX BOLT Z/P	4
32	M6 FW	FLAT WASHER 6MM	4
33	Pinch Weld Black 350mm	Pinch Weld Black 350mm	2
34	M12SW	M12 Spring Washer	6

### OPTIONS - CHECK ORDER

ITEM NO.	PART NUMBER	DESCRIPTION	For Drawing/ QTY.
34	WK2-FB-17CE-ASM2	NUMBER PLATE FLIP WK2 2017 ACC	1
35	09-0182-MS	Panel MS Black Upper WK2 2017 Commander	1
36	09-0184-MS	Panel MS Black PC Lower WK2 2017 Commander	1

# Components and parts

## Triple Hoop Assembly





# Components and parts

## Triple Hoop Assembly

### MAIN PARTS

ITEM NO.	PART NUMBER	DESCRIPTION	For Drawing/ QTY.
1	03-0072L	BRACKET ASSY IMPACT WK 14	1
2	03-0072R	BRACKET ASSY IMPACT WK 14	1
3	WK2-FB-17CEC-ASM1	WK2 2017 COMMANDER CLASSIC WELDMENT	1
4	09-0182	Panel Stainless Upper WK2 2017 Commander	1
5	09-0186	Center Underpan ASSY WK2 2017 Commander	1
6	09-0180L	Side Underpan LHS WK2 2017 Commander	1
7	09-0184	Panel Stainless Lower WK2 2017 Commander	1
8	12-0010	COVER PC FOG LIGHT	2
9	U4X4-LOGO PLATE- 1	LOGO PLATE-1	1
10	CARWAY DRL	DRL FOG LIGHT	2
11	AUTO 8 LED	LED INDICATOR/PARKER	2
12	09-0180R	Side Underpan RHS WK2 2017 Commander	1
13	WK2-FB-17CEC-BCT	JEEP WK2 MY17+ BUMPER CUT TEMPLATE A3 PRINT	1
14	WK2-FB-35	2011 AIR SUSPENSION BRACKET	1
15	JK-RB-B-17	STEP TIE IN	2

### SMALL PARTS KIT

ITEM NO.	PART NUMBER	DESCRIPTION	For Drawing/ QTY.
16	M5X16 CS	M5 COUNTERSUNK SCREW	10
17	M8X25 BHCS	M8X25 BUTTON HEAD CAP SCREW Z/P	15
18	M8 FW X 22	FLAT WASHER 8MM LARGE	15
19	M5 FN	M5 FLANGE NUT	12
20	M12 FW X 37	M12 FLAT WASHER LARGE	6
21	M12X40X1.75	M12 X 40 X 1.75 BOLT	6
22	M10FWX25	M10 FLAT WASHER X 25MM WIDE	10
23	M10SW	M10 SPRING WASHER	4
24	M10X40X1.5	BOLT M10 X 40	4
25	M5X15 PSCREW	M5 X 15 PH SCREW	12
26	M5X10 PSCREW	M5 X 10 PH SCREW	6
27	M10X1.5N	M10 X 1.5 NUT	3
28	M10x1.5X90	M10 X 1.5 X 90MM BOLT	3
29	Pinch Weld Black 350mm	Pinch Weld Black 350mm	2
30	M6 FN	FLANGE NUT M6	4
31	M6 FW	FLAT WASHER 6MM	4
32	M6 x 20	M6 X 20 HEX BOLT Z/P	4
33	m5 washer	M5 washer	2

### OPTIONS - CHECK ORDER

ITEM NO.	PART NUMBER	DESCRIPTION	For Drawing/ QTY.
34	WK2-FB-17CE-ASM2	NUMBER PLATE FLIP WK2 2017 ACC	1
35	09-0182-MS	Panel MS Black Upper WK2 2017 Commander	1
36	09-0184-MS	Panel MS Black PC Lower WK2 2017 Commander	1



# **Please Note**

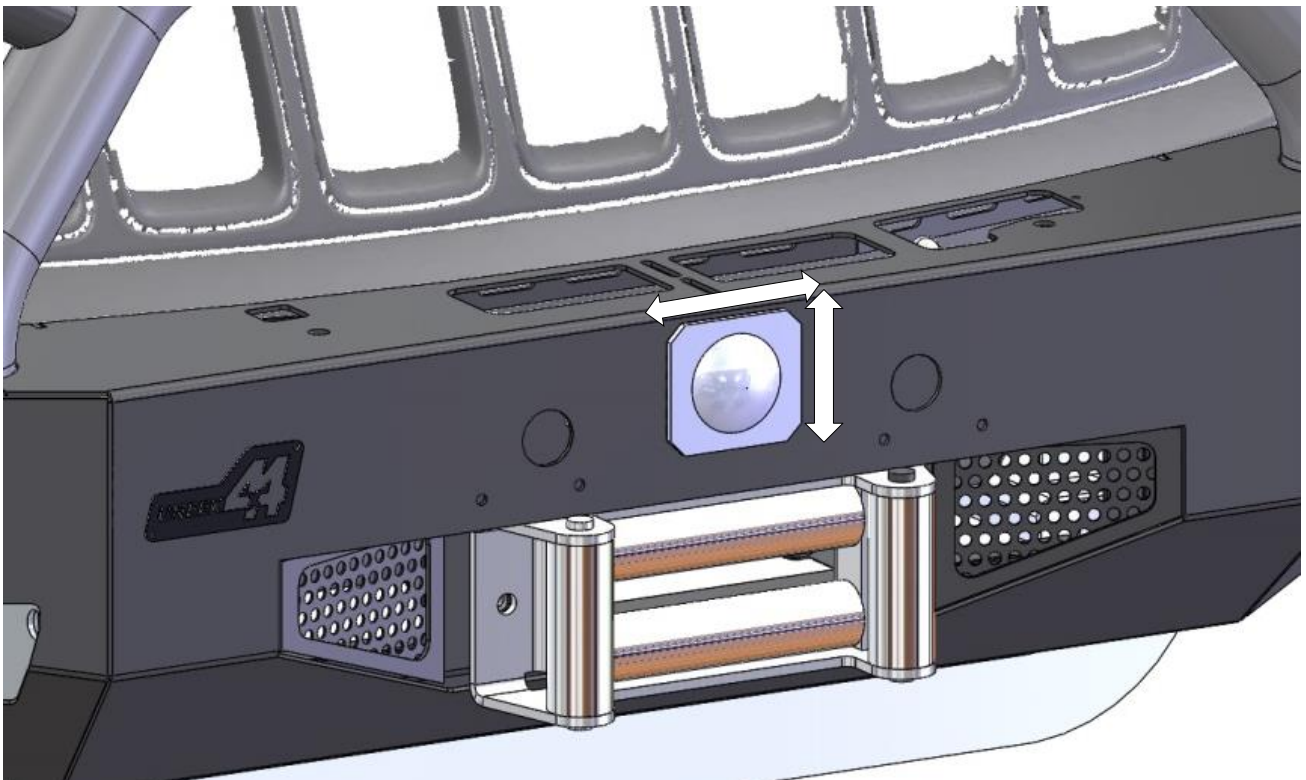
---

## **ACC AND PARKING SENSOR NOTE:**

Take time and care when fitting the parking sensors. Make sure the sensors go back into their ORIGINAL locations and orientations. Make sure sensors have been wiped clean and have not been damaged.

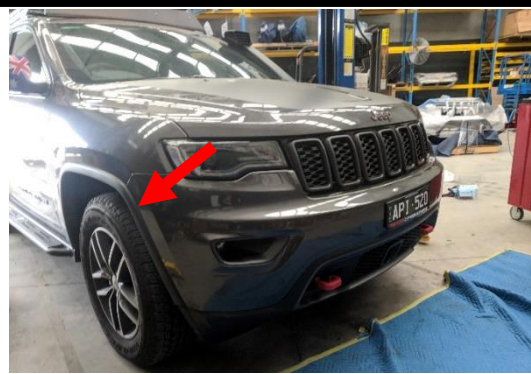
When fitting the ACC make sure the vertical edge and horizontal edge are parallel to that of the bar being used. Aiming the sensor too far up or down may render the ACC inoperative. UNEEK 4X4 will not be held responsible for poor fitting/aligning of bar and sensors.

Adjust Sensor as required to keep sensor looking directly forward.



## Step 1

Remove clips and screws holding wheel arch guards, flares and center stone guard to vehicle bumper. Disconnect fog lights, parking sensors and ACC/radar if fitted. Retain all clips and screws.



## Step 2

Remove plastic rivet clips securing plastic trim in engine bay. Release clips holding the trim and bumper to the metal panel below. Retain all clips.



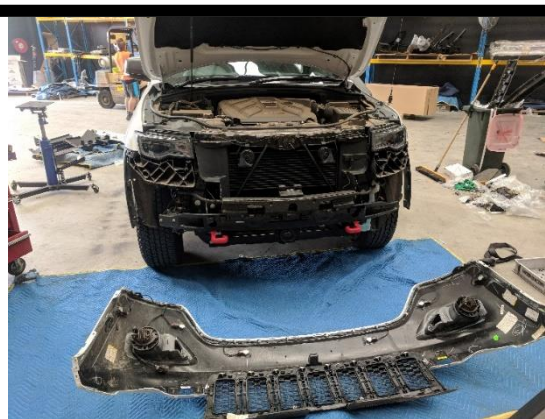
## Step 3

Remove the headlight washer covers by gently prying away from bumper and undoing the clips securing the cover to the washer shaft.



## Step 4

Release all molded clips securing the bumper to the car. Carefully remove bumper from car and place on non-marring surface.



## Step 5

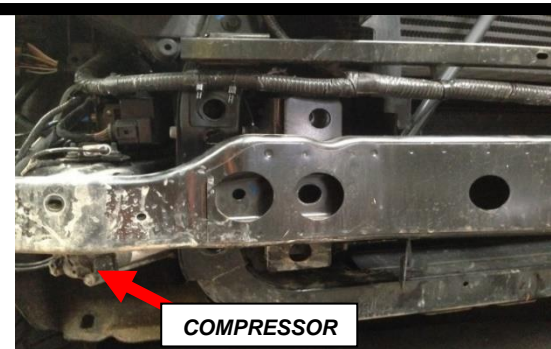
If vehicle is fitted with adaptive cruise control, remove ACC Radar unit and set aside for re-fitment to new bar.



## Step 6

Remove crash beam from vehicle and retain fasteners.

If vehicle is fitted with air suspension, remove fasteners securing compressor to crash beam. Retain fasteners.



## Step 7

Remove upper cross beam and front radiator support bolts. Refit upper bolt retain radiator support bolts.



## Step 8

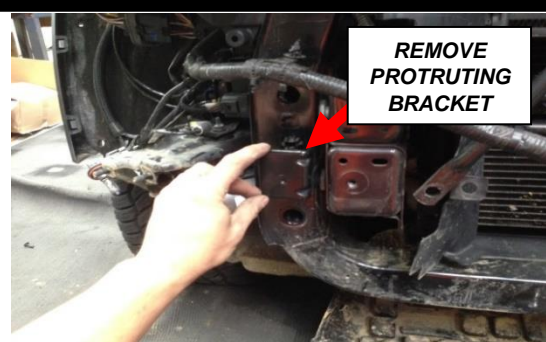
Remove factory tow points from drivers side chassis rail.





## Step 9

Remove small protruding bracket using grinder.  
Paint bare surfaces when complete to prevent corrosion.



## Step 10

Remove fasteners securing front of stone guard.  
Retain original fasteners.  
If fitting a UNEEK bash plate remove center stone guard from vehicle underside.



## Step 11

Install new mounts to vehicle using original fasteners on front face. Secure lower section using M10 x 40 x 1.75 bolts and flat washers.



M8-22Nm M10-44Nm



## Step 12

Trim lower section of radiator air dam along the white line as shown in the image.

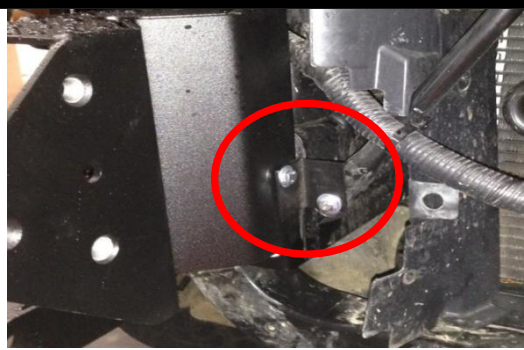


## Step 13

Fit radiator support rod brackets to impact absorber using M6 fasteners, flat washers and flange nuts provided.



M6-9Nm



## Step 14

Fit compressor bracket to the air suspension compressor and vehicle body using original hardware, as shown in the image.



## Step 15

### FOR COMMANDER CLASSIC (TRIPLE HOOP) ONLY

Cut the supplied wires on the supplied indicator/park lights 100mm from the light itself. These cut wires will be attached to the vehicle loom and joined to indicator/park light when bar is fitted.

Fit suitable terminals to supplied park/indicator lamp. GREEN is indicator, BROWN is parker and WHITE is earth. Remove headlights so to access to the loom plug. Take care to ensure no damage to the light assembly or vehicle.



## Step 16

Use a test light to determine correct wires for the parker and indicator circuits.

Splice into the vehicle loom and solder in wires tails for the bull bar mounted lights terminated earlier. Re-Insulate connections with electrical tape.

If fitting driving lights identify and splice high beam for relay trigger at this stage. Refer to instructions provided with driving lights.

Refit headlights.



## Step 17

Place bumper on work stand. Number sensors 1 to 6 then remove parking sensors from housings by gently prying open retaining clips with a flat blade screwdriver. Ensure parking sensors are kept in correct order.

This can be achieved by leaving them connected to the wiring harness at this stage.



## Step 18

Number the sensor housings to ensure they are replaced in bull bar in correct order. Sensor housings are not all the same.

Pry the housing away from the bumper using a trim removal tool as shown.



## Step 19

Apply automotive grade polyurethane adhesive, such as Sikaflex 227, to tabs of the sensor housings. Ensure that adhesive is not excessively applied.





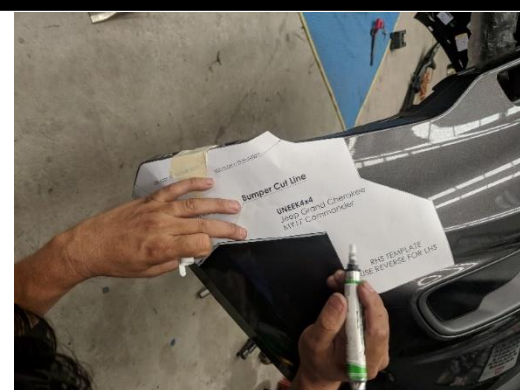
## Step 20

Fix the sensor housing to the inside of the bull bar and top fascia panel in the same position they were removed. No.2 and No.5 are rotated 180 degrees. All others are rotated as removed. Leave adhesive to cure for at least 1 hour whilst continuing with other steps.



## Step 21

Inspect paper bumper cut template and measure check lines to ensure scale is correct. Carefully cut out template and align with features on RHS of bumper as instructed by notes on template. Fix in position with masking tape. Mark cut line on bumper as indicated by edge of template with paint pen. Repeat with template reversed for LHS of bumper.



## Step 22

Measure and mark a point below the outside edge of the grille 30mm below the mold line in the front bumper. Complete for both sides of bumper.



## Step 23

Join the ends of the template marks with the measured points to create continuous line across bumper. Mark like with masking tape.





## Step 24

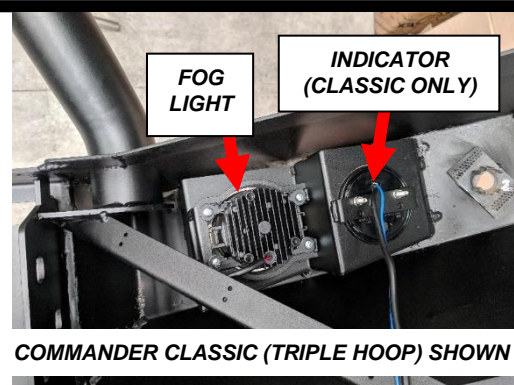
Re check all measurements. Carefully cut along marked line in bumper with air reciprocating saw or angle grinder. De-burr edges if necessary.



Once complete re-fit top section of bumper to vehicle. Fit pinch weld to end sections of bumper where cut will be visible.

## Step 25

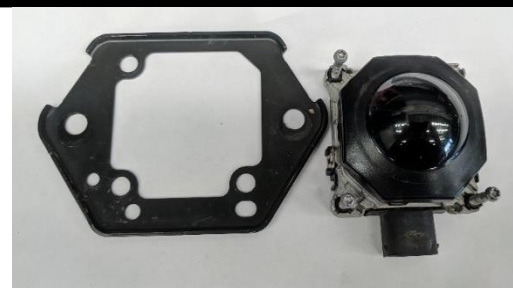
Fit supplied fog and indicator (Commander Classic Triple Hoop ONLY) to the bar using supplied fasteners.



## Step 26

### ADAPTIVE CRUISE CONTROL EQUIPPED CARS.

Remove the adaptive cruise control radar from the bracket. Take care not to damage the radar unit.



## Step 27

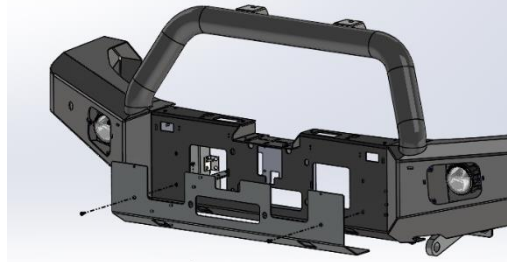
Refit the radar unit to the bar by inserting through the opening in the front of the bar and aligning mounting holes with original plastic thread inserts in radar unit.

Fix with supplied M5x16 screws.



## Step 28

Fit the Lower fascia plate to the vehicle using the M5 countersunk screws and flange nuts provided.



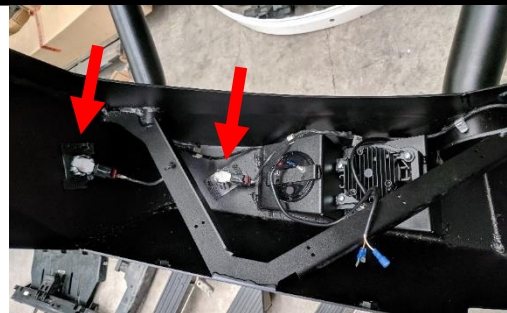
## Step 29

Trim parking sensor silicone isolators.

Fit the parking sensors and sensor loom to the bar. There are cut-outs in the uprights to allow cables to pass easily through.

Ensure that the sensors are replaced in their ORIGINAL POSITIONS.

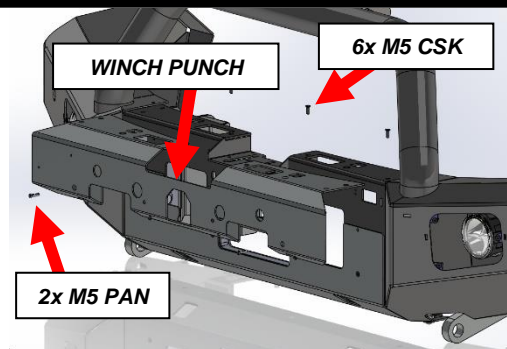
Secure loom to bar with cable ties.



## Step 30

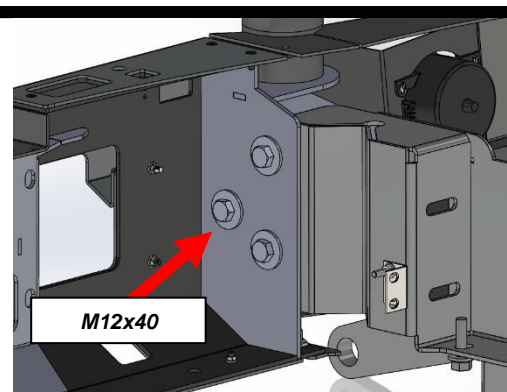
If fitting winch, knock out winch controller cover panel on front fascia. Alternatively, the winch control box can be concealed under the bonnet allowing punch out section to be retained. Fit parking sensors to loom secured to main bar assembly.

Fit front fascia to bar using M5 countersunk screws and flange nuts provided. As the fascia is offered up to the bar, insert the parking sensors into their respective housings mounted to the fascia.



## Step 31

With the help of another person lift the bar onto the vehicle and secure with M12 1.75 pitch bolts, spring washers and large flat washers. Do not fully tighten.

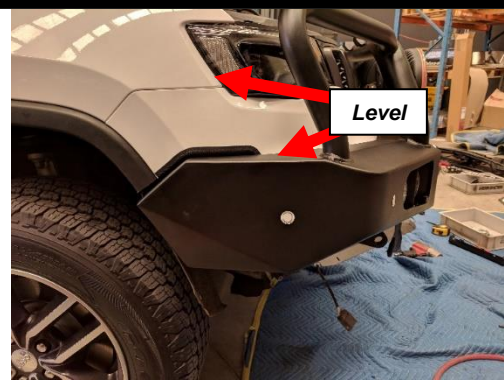


## Step 32

Align the bar so the top surfaces or tops of wing edges are parallel to the rake angle of the vehicle. Adjust the bar to the final position and tighten all mounting bolts.

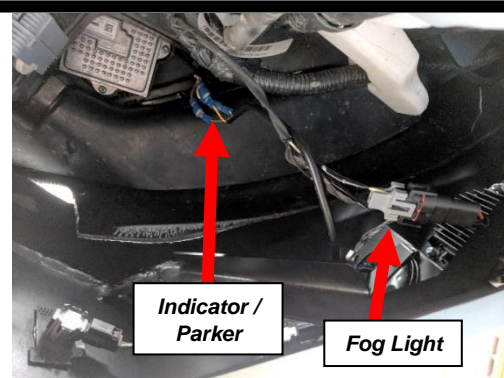


M12-77Nm



## Step 33

Connect wiring for the fog lamps and indicator lamps. The fog lamps supplied use the same connector as the factory units, so no modification is necessary. On RHS of vehicle also re-connect original parking sensor harness.



## Step 34

### ADAPTIVE CRUISE CONTROL EQUIPPED CARS.

Re connect adaptive cruise control module. Ensure that wiring loom is secured away from winch fairlead opening.



## Step 35

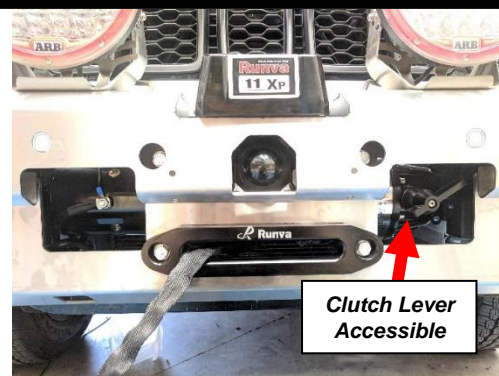
If fitting driving lights do so at this point. Follow instructions provided by driving light manufacturer.





## Step 36

If fitting a winch do so at this point. Follow instructions provided by winch manufacturer. The design of the winch cradle spaces the winch approximately 30mm behind the front face of the bar. Depending on the length of fasteners supplied by the winch manufacturer, longer fasteners may be required. ALWAYS use high tensile (GR8.8 or above) fasteners when mounting winch. Rotate gearbox such that clutch is accessible through front access cutout in bar.



## Step 37

Fit center under panel to vehicle. Secure under panel to bull bar with at least 2x M8x25 button head bolts. Ensure back of under panel is seated properly on the radiator surround cross member.



## Step 38

With the panel in position mark the center point of the slots with paint pen on the vehicle. Remove the under panel and drill 3x 12mm holes in the locations marked, through both front and rear faces of chassis rail.



## Step 39

Refit under panel and secure to bull bar with M8x25 Button head bolts and flat washers.

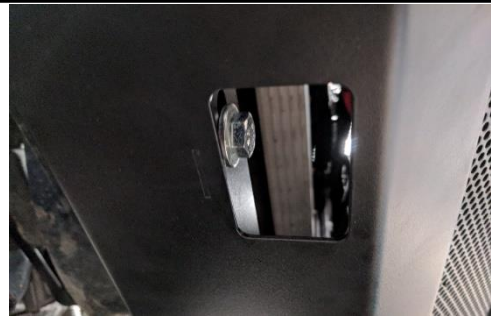
Secure to cross member using 3x M10x90mm bolts, washers and flange nuts.

If fitting UNEEK 4x4 Bash plate fit front of bash plate to cross member through same fasteners.

If re-fitting factory plastic guard, trimming of guard will be required to clear under panel.



M12-77Nm M8-22Nm



## Step 40

Secure outer panels to bar using M8 button head screws and flat washers.



M8-22Nm



## Step 41

Cut wheel arch guard material to suit profile and place behind lip of panels. When complete tighten all fasteners.

Wipe bar down with a clean soft rag to remove any fingerprints.



# ***Finished Product***

---



Revised: 20/09/2019

***Australia's Best  
Off Road Products  
Created... Not Cloned***

49-75 Pacific Drive, Keysborough, VIC, 3173

1300 806 952

[www.uneek4x4.com.au](http://www.uneek4x4.com.au)

