

UNEK4
A U S T R A L I A
OFF ROAD ACCESSORIES

SKU: WK2-HW-14-ASM0/WK2-PR-14-ASM0



Fitting Instructions

Jeep WK2 Grand Cherokee

Hidden Winch Mount, Pre Runner and Brush Tubes

***Australia's Best Off Road Products
Created... Not Cloned***

Contents

WHY UNEEK	3
IMPORTANT INFORMATION	4
COMPONENTS AND PARTS	5
COMPONENTS AND PARTS	6
COMPONENTS AND PARTS	7
STEP 1	8
STEP 2	8
STEP 3	8
STEP 4	8
STEP 5	9
STEP 6	9
STEP 7	9
STEP 7B	9
STEP 8	10
STEP 9	10
STEP 10	11
STEP 11	12
STEP 12	12
STEP 13	13
STEP 14	13
STEP 15	14
STEP 16	14
STEP 17	14
STEP 18	15
STEP 19	15
STEP 20	15
FINISHED PRODUCT	16

Why Uneek

Australian Designed and Built

All our products are designed and manufactured right here in Australia, allowing us to have better lead times and better quality control than companies manufacturing overseas. By supporting us you're supporting to grow the Australian economy and our brand.

Uneek Styling

We do not design our bars to look the same across the vehicle range. We fully develop our own product to individually suit each vehicle. We take time in designing from scratch and then test all our bars to comply with all relevant ADRs and Australian Standards.

Lightweight Through Smart Engineering

Having a steel bar doesn't mean you have to add more weight than is required to the front of your vehicle. Our engineering practises ensure we have the right protection, designed the right way to ensure protection is at its maximum and weights at its minimum.

Proven Off Road

We take our products out and test them right here in the heart of our country in our Australian conditions so we know our products can withstand anything you throw at them.

Increased Approach Angles

Our bars are designed to give you the best advantage while off road, with increased approach angles means you can tackle those tough and steep angles better than you could with the original setup or other alternatives.

Warranty

Uneek 4x4 back itself as Australia's leading steel bull bar manufacturer. This is why we provide you with the best steel bar warranty in Australia - 5 years.

Important Information



PLEASE READ BEFORE INSTALLATION.

- When installed in accordance with these instructions, the front protection bar and winch mount does not affect the operation of the vehicles SRS airbags.
- This product must be installed exactly as per these instructions using only hardware supplied.
- Take a few moments to read instructions thoroughly before beginning work.
- In the event of damage to any bar component please contact Uneek4x4 in regards to repair/replacement of components.
- Do not use this product for any vehicle make or model other than that specified on these instructions.
- Do not remove labels from this product.
- This product and its fixings must not be modified in any way unless stated in these fitting instructions.
- The installation of this product is recommended for trained personnel.
- These instructions are correct at time of publication. Uneek4x4 cannot be held responsible for the impact of any changes subsequently made by the vehicle manufacturer.
- During installation it is the duty of the installer to check correct operation/clearances of all components.
- Supplied tow points are designed as tow points only. Use in a recovery operation will be at operator's risk.
- Installation time: 4-5 hours
- Vehicle specific notes: A flip up license plate kit may also be required.
- Vehicle specific notes: Some vehicles fitted with Petrol/gasoline 3.6L motor may be required to shift the Transmission cooler higher. If so you will require longer hoses and fittings.
- This kit only fits vehicles MY2014-MY2016



EYE & EAR PROTECTION REQUIRED



DRILLING REQUIRED



TWO PERSON LIFT REQUIRED



TORQUE SETTING



CUTTING OR GRINDING REQUIRED

FASTENER TORQUE SETTINGS:

M6 – 9Nm (4lb ft)

M8 – 22Nm (16lb ft)

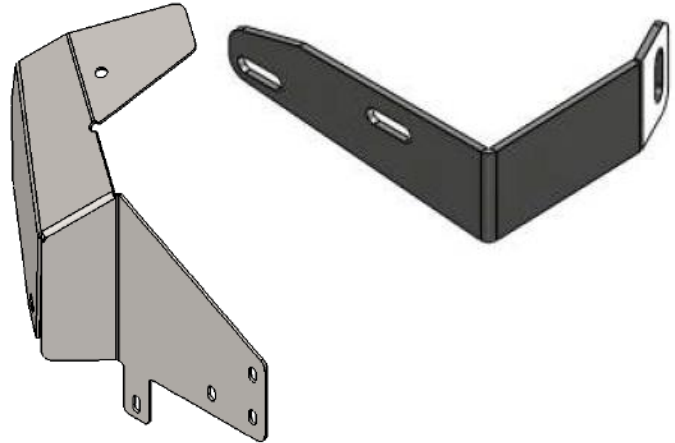
M10 – 44Nm (32lb ft)

M12 – 77Nm (57lb ft)

TOOLS REQUIRED: Basic tool kit with spanners, Allen keys and socket set, Plastic rivet gun with Plastic rivets or suitable automotive push in retaining clips, power drill with drill bits, center punch and hammer. Angle grinder or metal saw

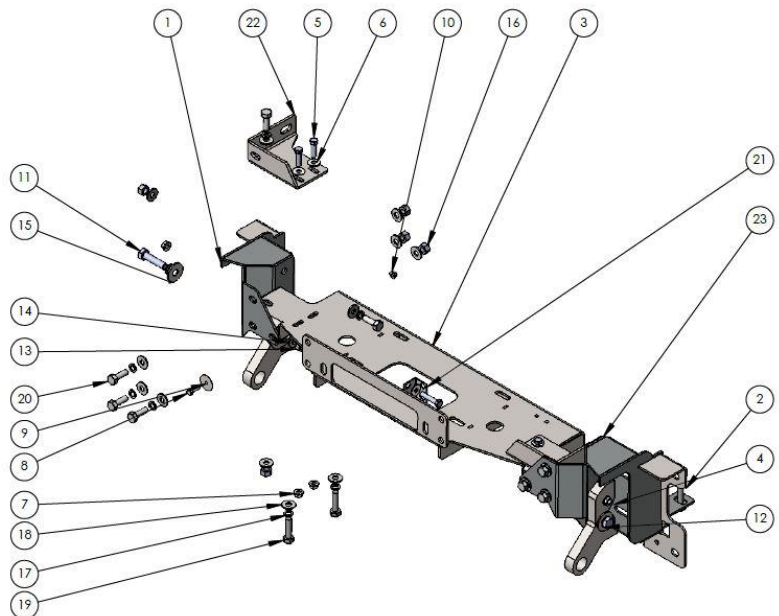
Components and parts

The following RH guard is supplied if
Customer has Air suspension fitted
Part number 03-0649
As well as the Air suspension bracket WK2-
FB-35



Contents if purchasing hidden winch mount

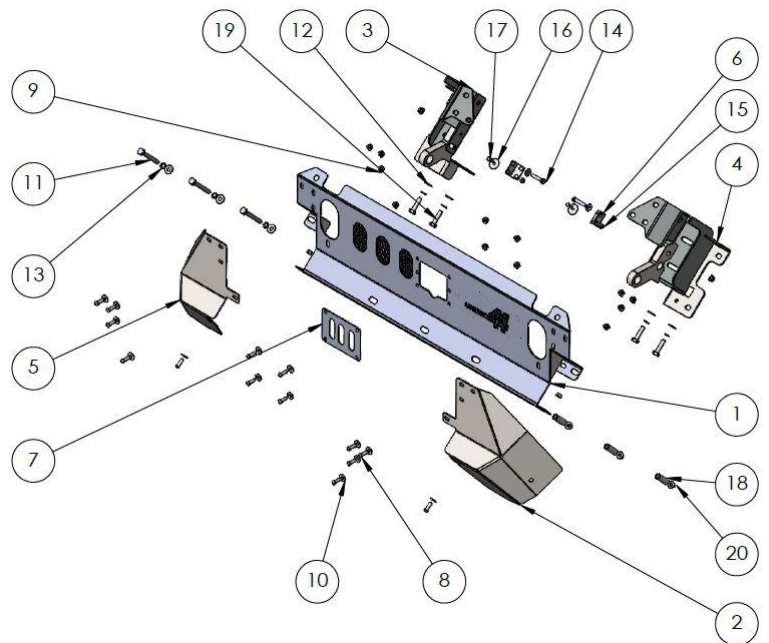
ITEM NO.	PART NUMBER	DESCRIPTION	QTY.
1	WK2-PR-14-ASM4R	IMPACT ABSORBER PR	1
2	WK2-PR-14-ASM4L	IMPACT ABSORBER PR	1
3	WK2-PR-14-ASM1	HIDDEN WINCH MOUNT	1
4	M8X40	BOLT M8 X 40	2
5	M8X30	BOLT M8 X 25	4
6	M8 FW X 22	FLAT WASHER 8MM LARGE	6
7	M8 FN	FLANGE NUT M8	6
8	M6X20	BOLT M6 X 20	2
9	M6 Mud Guard Washer	M6 FW x 31mm	2
10	M6 FN	FLANGE NUT M6	2
11	M12X50X1.75	M12 X 50 X 1.75 BOLT	2
12	M12 SW	M12 SPRING WASHER	2
13	M12 NUT	M12 X 1.75 NUT	2
14	M12 FW	M12 FLAT WASHER	2
15	M12 FW X 37	M12 FLAT WASHER LARGE	2
16	M10X1.5N	M10 X 1.5 NUT	10
17	M10SW	M10 SPRING WASHER	14
18	M10FWX25	M10 FLAT WASHER X 25MM WIDE	24
19	M10 X 40 X 1.5	BOLT M10 X 40	4
20	M10 X 30 BOLT	M10 X 30 HEX ZP 8.8	10
21	JK-RB-B-17	STEP TIE IN	2
22	03-0279R	hidden winch gusset	1
23	03-0279L	hidden winch gusset	1



Components and parts

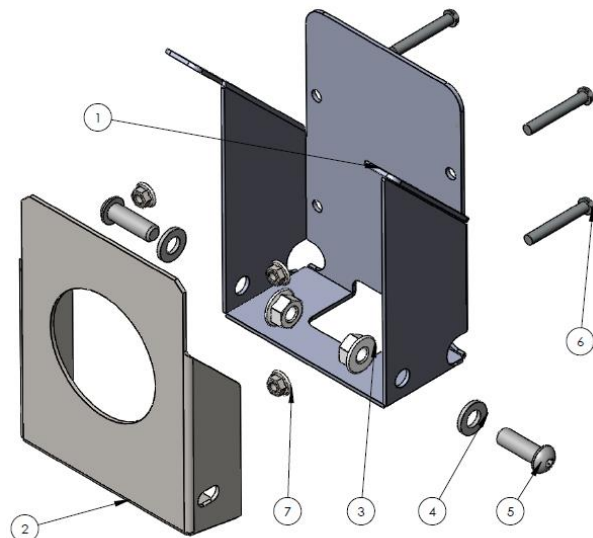
Contents if purchasing pre runner

ITEM NO.	PART NUMBER	DESCRIPTION	QTY.
1	WK2-PR-14-ASM2	PRE RUNNER	1
2	WK2-PR-14-ASM3L	PRE RUNNER WINGS	1
3	WK2-PR-14-ASM4R	IMPACT ABSORBER PR	1
4	WK2-PR-14-ASM4L	IMPACT ABSORBER PR	1
5	WK2-PR-14-ASM3R	PRE RUNNER WINGS	1
6	JK-RB-B-17	STEP TIE IN	2
7	04-0423	ACC CAP Pre runner	1
8	M8X25 BHCS	M8X25 BUTTON HEAD CAP SCREW	14
9	M8 FN	FLANGE NUT M8	16
10	M8 FW X 22	FLAT WASHER 8MM LARGE	16
11	M10x1.5X90	M10 X 1.5 X 90MM BOLT	3
12	M10FWX25	M10 FLAT WASHER X 25MM WIDE	7
13	M10SW	M10 SPRING WASHER	7
14	M8X40	BOLT M8 X 40	2
15	M6 FN	FLANGE NUT M6	2
16	M6 Mud Guard Washer	M6 FW x 31mm	2
17	M6X20	BOLT M6 X 20	2
18	05-0137	crush tube 2"	3
19	M10 X 40 X 1.5	BOLT M10 X 40	4
20	M10 FN	M10 Flange nut	3



Contents if you have ACC

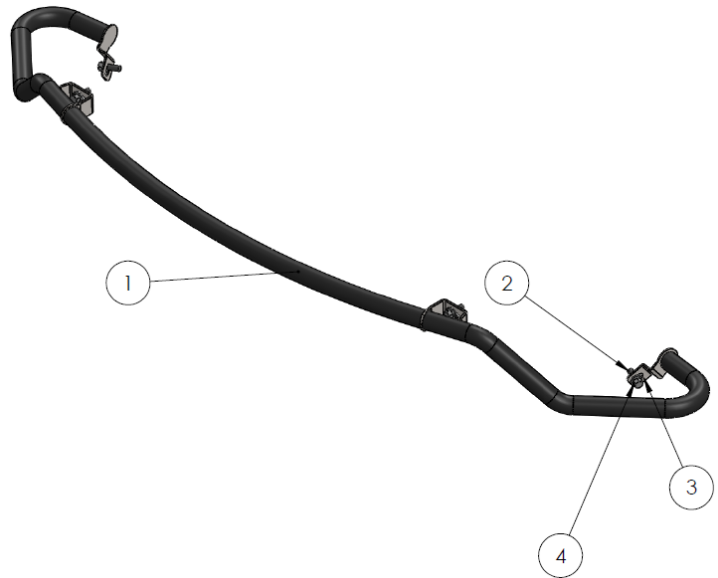
ITEM NO.	PART NUMBER	DESCRIPTION	QTY.
1	03-0511	ACC MOUNT	1
2	03-0509	ACC MOUNT FRONT	1
3	M8 FN	FLANGE NUT M8	2
4	M8 WASHER	M8 WASHER	2
5	M8X25 BHCS	M8X25 BUTTON HEAD CAP SCREW	2
6	M5X35 PSCREW	M5 X 15 PH SCREW	4
7	M5 FN	M5 FLANGE NUT	4



Components and parts

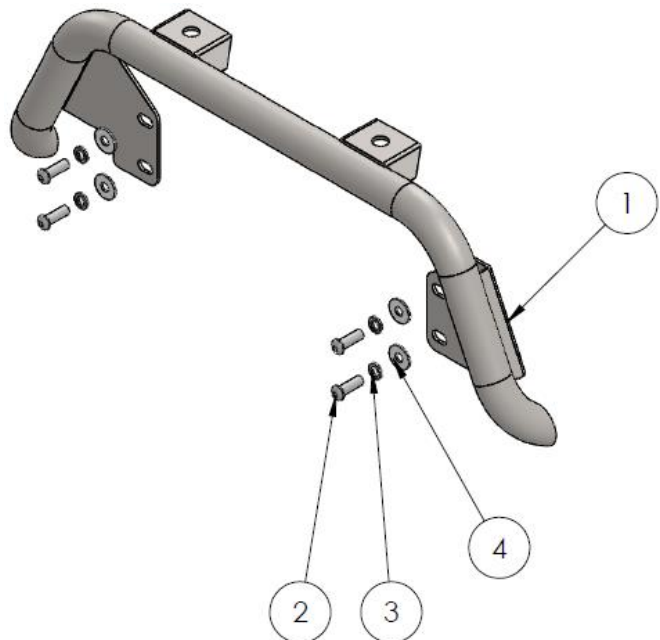
Contents if purchasing lower brush tube

ITEM NO.	PART NUMBER	DESCRIPTION	QTY.
1	WK2-PR-14-ASM5	PRE RUNNER BRUSH BAR	1
2	M10-1.5 x 30	M10x30 HEX BOLT Z/P 10.9	4
3	M10 HD WASHER	M10 HD WASHER Z/P	4
4	M10SW	M10 SPRING WASHER	4



Contents if purchasing upper brush tube

ITEM NO.	PART NUMBER	DESCRIPTION	QTY.
1	WK2-PR-14-ASM6	LIGHT MOUNT TUBE	1
2	M8X25 BHCS	M8X25 BUTTON HEAD CAP SCREW Z/P	4
3	M8 SW	M8 SPRING WASHER	4
4	M8 FW X 22	FLAT WASHER 8MM LARGE	4



Step 1

Whether fitting pre runner or hidden winch mount steps 1-11 are the same.

First thing is to ensure all components are present.



Step 2

Remove the factory bumper and grille. Begin by removing the lower air damn by undoing 7 quarter turn clips under the bumper, then pulling the air damn off.



Step 3

Remove the forward plastic clips and screw from the fender flare. The plastic rivets at the bottom will need to be cut off or drilled out.



Step 4

Pull the fender flare away just in the front. There will be two clips inside that will need to be pushed out from the inside. Do not completely remove the flare just enough to pull the bumper away.



Step 5

With the bonnet open remove all clips holding the top of the grille on.

You can now remove the whole bumper by pulling it away from the car. There is a little section at the wheel arch on each side that wraps around inside that needs to be pulled out away from the car, then the whole bumper will easily pull off.



Step 6

Remove the entire front impact absorber and crossbar, once removed it should look like this.

Refit crossbar top bolt.



Step 7

Remove small bracket shown with an angle grinder or suitable metal saw.



Step 7B

Remove factory tow point from driver's side and lower (forward facing) radiator support bolts and retain.

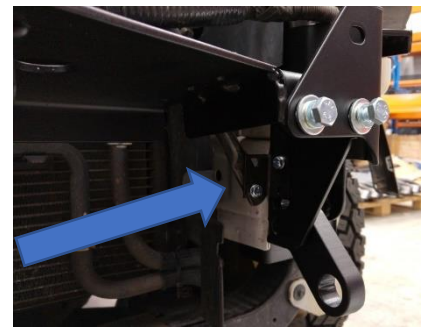
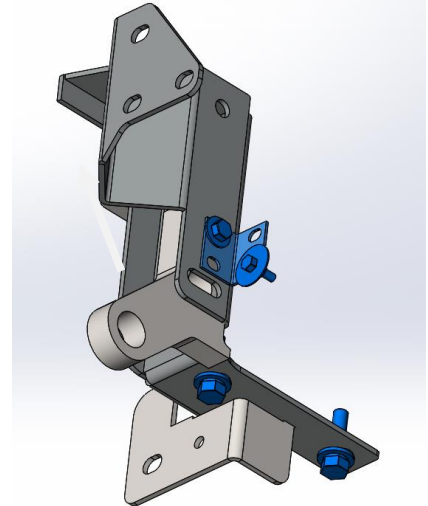
Step 8

Loosely fit impact absorber brackets on left and right hand side. Use 2 x M10x40, M10 spring washers and M10 washers up into the chassis from below and use original M8 hardware for the front.

Tip: On the passenger side fit the lower inner bolt as the impact absorber is closer to the chassis rail.

Loosely fit radiator support tubes to the impact absorber using M6 (M6x20 bolt, M6 mud guard washer, M6 flange nut) & M8 (M8x40 bolt, M8 washer & M8 flange nut) and step fill-in brackets.

NOTE: Loose fit to allow for adjustment in later steps.



Step 9

Some vehicles fitting with the 3.6L Pentastar motor have a transmission cooler too low that interferes with the winch cradle, you will need to remount this higher using cable ties. Longer hose will be required.

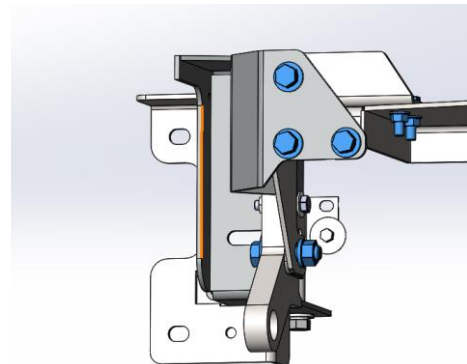
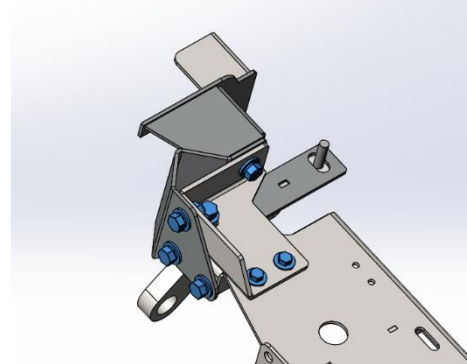




Step 10

If fitting the optional hidden winch mount, place the mount between the RH and LH impact absorbers and loosely fit all bolts including top gusset as shown.

ITEM NO.	PART NUMBER	DESCRIPTION	QTY.
1	WK2-PR-14-ASM1	HIDDEN WINCH MOUNT	1
2	M8X30	BOLT M8 X 25	4
3	M8 FW X 22	FLAT WASHER 8MM LARGE	4
4	M8 FN	FLANGE NUT M8	4
5	M12X50X1.75	M12 X 50 X 1.75 BOLT	2
6	M12 SW	M12 SPRING WASHER	2
7	M12 NUT	M12 X 1.75 NUT	2
8	M12 FW	M12 FLAT WASHER	2
9	M12 FW X 37	M12 FLAT WASHER LARGE	2
10	M10X1.5N	M10 X 1.5 NUT	10
11	M10SW	M10 SPRING WASHER	10
12	M10FWX25	M10 FLAT WASHER X 25MM WIDE	20
13	M10 X 30 BOLT	M10 X 30 HEX ZP 8.8	10
14	03-0279R	hidden winch gusset	1
15	03-0279L	hidden winch gusset	1



Note:

M12 hardware (M12x50 bolt, M12 Spring washer, M12 larger flat washer, M12 Washer & M12 nut) fitted through the tow hook.

M8 Hardware (M8x30 bolt, M8 washer and M8 flange nut) located top 4 inner holes of the winch mount.

M10 Hardware (M10x30 bolt, M10 spring washer, M10 washer (used both sides of brackets) and M8 nuts) for everywhere else.

Centralise the mount and torque up all bolts from this step and **Step 8**

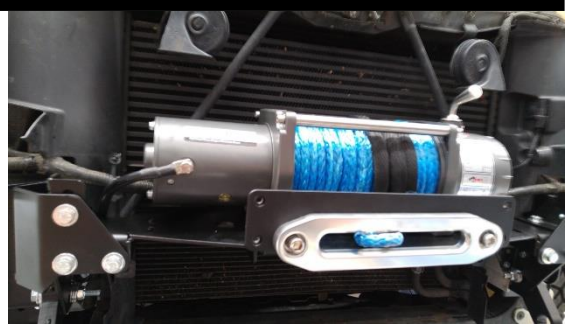
Step 11

If fitting a winch, place it on the cradle now and torque it down once it's centralized.

NOTE:

Push back Winch Cradle as far back as possible. May require radiator rods to be slightly kinked backwards.

Grill may require trim of male clip. Leave enough to clip back on



Step 12

Fit winch controller to winch cradle anywhere that it can fit. This may require drilling holes or extending wires into the bonnet/hood area. Only fit like shown if fitting the pre-runner bash plate system.

Some winches come with a bracket designed to fit on top of a bull bar, we find it good to use this bracket and come off the side bolts of the main radiator cross member as shown to the right.

Note:

Wire may require manipulation to fit.

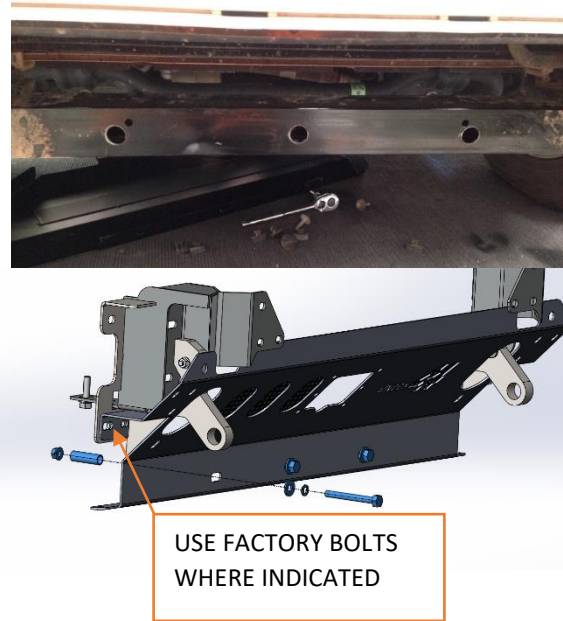


Step 13

Pre runner:

Temporarily mount the pre runner bash plate using the lower radiator support bolts to the lower cross member and mark the centre of each slot. Using a small 5mm or so pilot drill, drill all the way through, then increase to 10.5mm. Finally drill a 18mm hole through the front only and insert the crush tubes.

Fit the centre bash plate using the factory bolts on the chassis brackets and the M10 Hardware along the 3 drilled holes (M10x90 BOLT, M10 spring washer, M10 washer, crush tube, M10 flange nut).



Note: For reference these holes are 25mm up from the bottom lip, the middle one is in the center and the outside ones are 200mm each side.

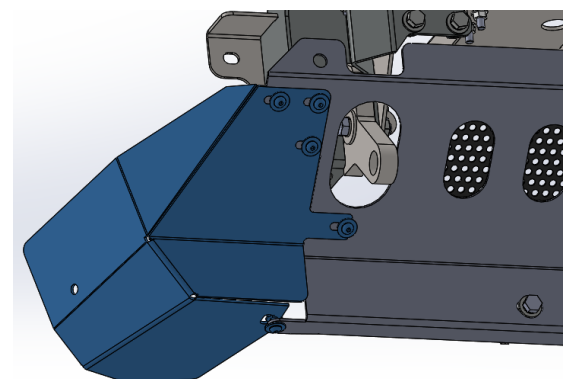
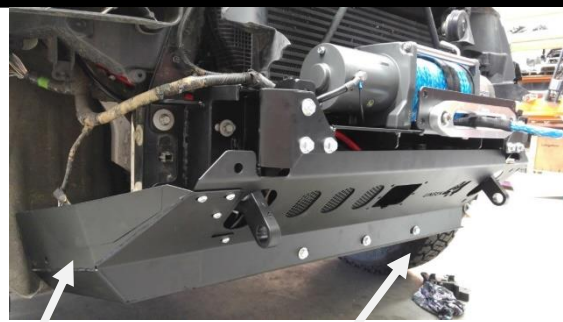


Step 14

Fit the side wings. Fasten using the M8 hardware (M8X30 bolts, M8 washers & M8 flange nuts). If the vehicle is equipped with quadra lift suspension breakout the removal panel on the RH side wing to clear the compressor

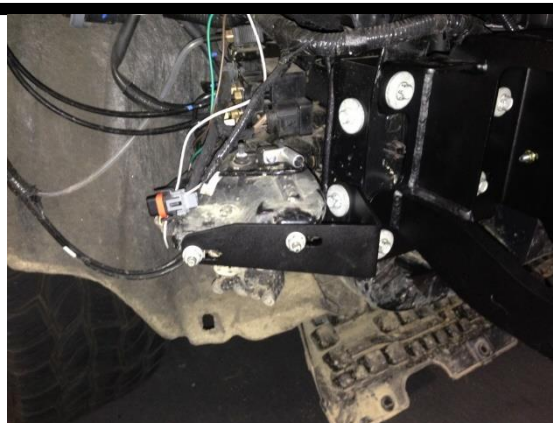
If the vehicle is not equipped with adaptive cruise control, fit the ACC cover cap.

Torque up all bolts.



Step 15

If equipped with quadra lift suspension use the existing hardware to mount compressor bracket as shown.



Step 16

Place the bumper back on the vehicle and mark up for cutting access to fair lead. This step will differ depending on your fairlead, but in general you will find the center of the bumper then move up 40mm then out 127mm to each bolt hole on the fair lead. Put the fair lead up and line up these marks with your holes, then trace around the fairlead, and cut out.



Step 17

Once the fair lead is back on put the full bumper back on and fit number plate if required by your state. We suggest using a Uneek4x4 number plate flip, then put your bumper back on.

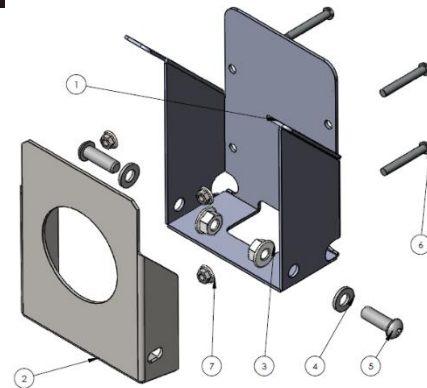


Step 18

If fitting an ACC radar camera, you must remove it from the factory bracket and screw it into the Uneek bracket with M5 hardware then mount it to the pre runner.

Otherwise fit ACC Cap.

ITEM NO.	PART NUMBER	DESCRIPTION	QTY.
1	03-0511	ACC MOUNT	1
2	03-0509	ACC MOUNT FRONT	1
3	M8 FN	FLANGE NUT M8	2
4	M8 WASHER	M8 WASHER	2
5	M8X25 BHCS	M8X25 BUTTON HEAD CAP SCREW	2
6	M5X35 PSCREW	M5 X 15 PH SCREW	4
7	M5 FN	M5 FLANGE NUT	4



Step 19

If fitting top brush tube, you will need to drill extra holes through the bumper to line up with welded nuts in winch cradle, then bolt on with M8 hardware. Lower brush tube can simply be bolted on the mounts of the pre runner with M10 hardware.



Step 20

Feel free to drive around with the lower air dam removed. Just ensure the wheel well liner is secured and out of the way of the tires.



Finished Product



Revised: 08/04/2020

***Australia's Best
Off Road Products
Created... Not Cloned***

49-75 Pacific Drive, Keysborough, VIC, 3173

1300 806 952

www.uneek4x4.com.au

