

UNEK4
AUSTRALIA
OFF ROAD ACCESSORIES

SKU: HC-S-17RG-ASM0



Fitting Instructions
Holden Colorado MY17
Sliders

**Australia's Best Off Road Products
Created... Not Cloned**

Contents

Why Uneek	3
Important Information	4
Components and part	5
Step 1: Remove Original Side Steps	7
Step 2: Space out Exhaust	7
Step 4: Prepare Sliders	8
Step 5: Fit Passenger Side Front Mount	9
Step 6: Fit Passenger Side Middle & Rear Mount	9
Step 7: Secure Passenger Side Sliders	10
Step 8: Refit Fuel tank	11
Step 9: Repeat Steps 5-7 for Driver Side	11
Step 10: Finish	11
Finished Product	11

Why Uneek

Australian Designed and Built

All our products are designed and manufactured right here in Australia, allowing us to have better lead times and better quality control than companies manufacturing overseas. By supporting us you're supporting to grow the Australian economy and our brand.

Uneek Styling

We do not design our bars to look the same across the vehicle range. We fully develop our own product to individually suit each vehicle. We take time in designing from scratch and then test all our bars to comply with all relevant ADRs and Australian Standards.

Lightweight Through Smart Engineering

Having a steel bar doesn't mean you have to add more weight than is required to the front of your vehicle. Our engineering practises ensure we have the right protection, designed the right way to ensure protection is at its maximum and weights at its minimum.

Proven Off Road

We take our products out and test them right here in the heart of our country in our Australian conditions so we know our products can withstand anything you throw at them.

Increased Approach Angles

Our bars are designed to give you the best advantage while off road, with increased approach angles means you can tackle those tough and steep angles better than you could with the original setup or other alternatives.

Warranty






Uneek4x4 back itself as Australia's leading steel bull bar manufacturer. This is why we provide you with the best steel bar warranty in Australia - 5 years.

Important Information



PLEASE READ BEFORE INSTALLATION.

- When installed in accordance with these instructions, rock sliders do not affect the operation of the vehicles SRS airbags.
- This product must be installed exactly as per these instructions using only hardware supplied.
- Take a few moments to read instructions thoroughly before beginning work.
- In the event of damage to any bar component please contact Uneek 4x4 in regards to repair/replacement of components.
- Do not use this product for any vehicle make or model other than that specified on these instructions.
- Do not remove labels from this product.
- This product and its fixings must not be modified in any way unless stated in these fitting instructions.
- The installation of this product is recommended for trained personnel.
- These instructions are correct at time of publication. Uneek 4x4 cannot be held responsible for the impact of any changes subsequently made by the vehicle manufacturer.
- During installation it is the duty of the installer to check correct operation/clearances of all components.
- Installation time: 1.5 hour.
- Vehicle specific notes: A hydraulic jack will be required. Please note that the threads in the captive nut end plates are 1.5 pitch.

	EYE & EAR PROTECTION REQUIRED
	DRILLING REQUIRED
	TWO PERSON LIFT REQUIRED
	TORQUE SETTING
	CUTTING OR GRINDING REQUIRED

FASTENER TORQUE SETTINGS:

- M6 – 9Nm (4lb ft)
- M8 – 22Nm (16lb ft)
- M10 – 44Nm (32lb ft)
- M12 – 77Nm (57lb ft)

TOOLS REQUIRED:

Basic tool kit: Hydraulic jack, 'G' or 'F' clamp, drill and 10mm drill bit, sharp Stanley knife.

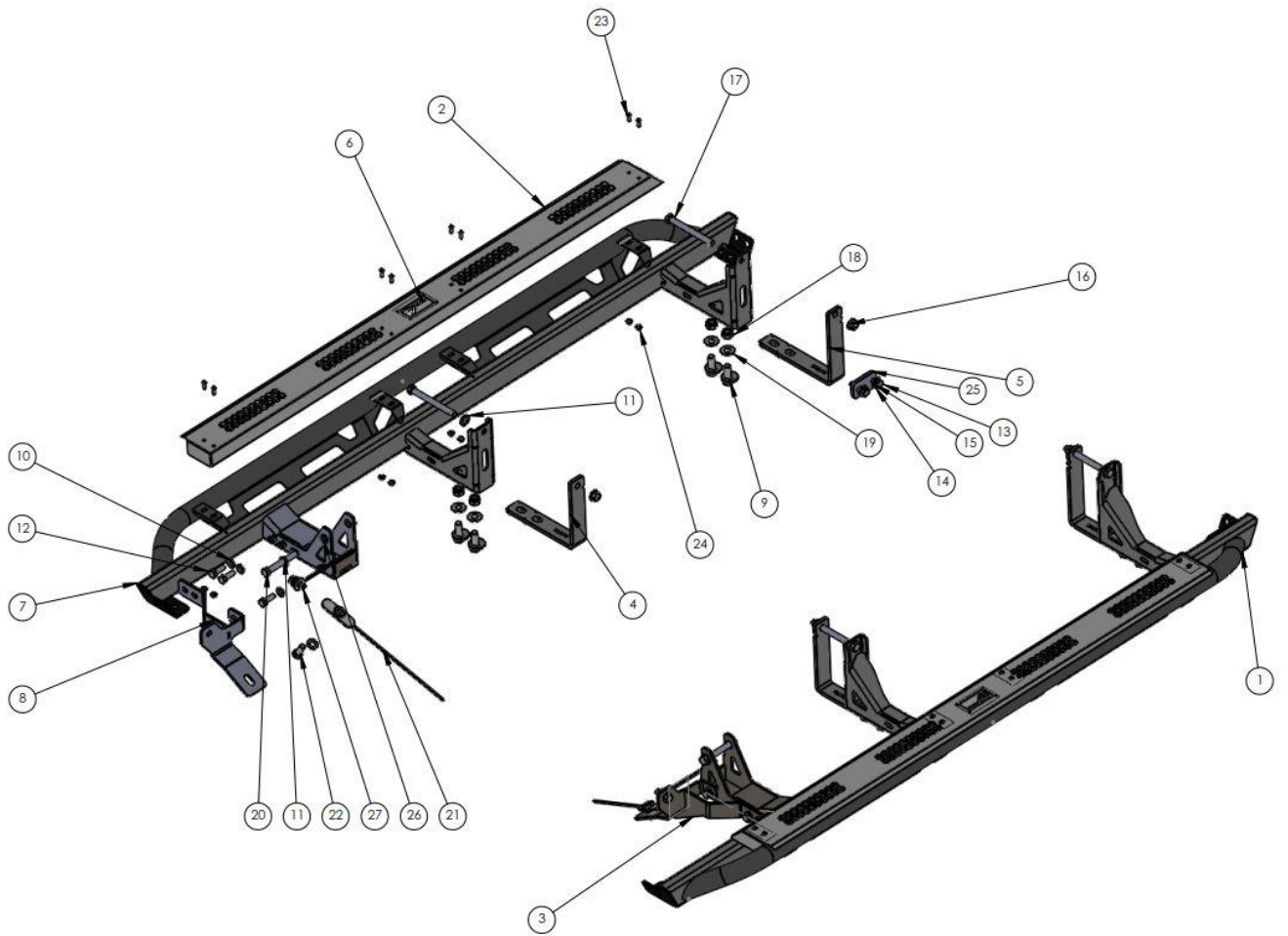
Components and part

MAIN PARTS

ITEM NO.	PART NUMBER	DESCRIPTION	Default/QTY.
1	HC-S-17RG-ASM1L	2017 HOLDEN COLORADO SIDE STEP LHS	1
2	09-0028	PANEL TREAD SLIDER HILUX 05	2
3	HC-S-17RG-ASM2L	COLORADO SLIDER BOLT ON BRACKET	1
4	03-0698	COLORADO SLIDER MID STRAP ASSY	2
5	03-0702	COLORADO SLIDER REAR STRAP ASSY	2
6	JK-S-10	LOGO PLATE	2
7	HC-S-17RG-ASM1R	2017 HOLDEN COLORADO SIDE STEP RHS	1
8	HC-S-17RG-ASM2R	COLORADO SLIDER BOLT ON BRACKET	1

BOLT KIT

ITEM NO.	PART NUMBER	DESCRIPTION	Default/QTY.
9	04-0280	M14 X30X2 CAM BOLT	8
10	M10 HD WASHER	M10 HD WASHER Z/P	8
11	M12 HD WASHER	M12 HD WASHER	8
12	M10X30	M10 X 1.5 X 30MM BOLT	8
13	M10X40X1.25	BOLT M10 X 40	2
14	M10FWX25	M10 FLAT WASHER X 25MM WIDE	2
15	M10SW	M10 SPRING WASHER	8
16	M12 X 1.75 FN	M12 FLANGE NUT	4
17	M12X130X1.75	M12 X 130 X 1.75 BOLT	4
18	M14 NYLOC	NYLOC SELF LOCKING NUT, ST STL A2 ISO	8
19	M14 WASHER	M14 WASHER Z/P	8
20	M12X90X1.75	M12 X 90MM X 1.75 BOLT	2
21	04-0252	NUT PLATE ASSY M12 RECOVERY	2
22	M12X30X1.75	BOLT M12 1.75 PITCH	2
23	M6 x 16 BHCS	M6 X 16 BHCS	16
24	M6 FN	FLANGE NUT M6	16
25	04-0670	COLORADO STEP EXHAUST SPACER	1
26	M12 SW	M12 SPRING WASHER	2
27	04-0086	ASSY M10 ROOT NUT PLATE	2

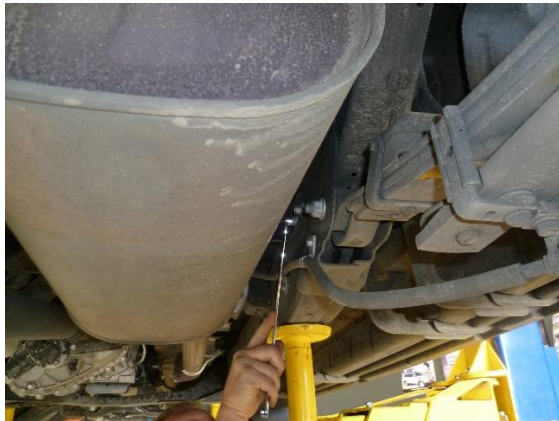


Step 1: Remove Original Side Steps

- Remove original side steps and brackets. Refit and tighten all bolts.

Step 2: Space out Exhaust

- Fit spacer between the driver side chassis rail and muffler mounting brackets on the driver side of the vehicle. (Slot of spacer to be located towards the front of vehicle)

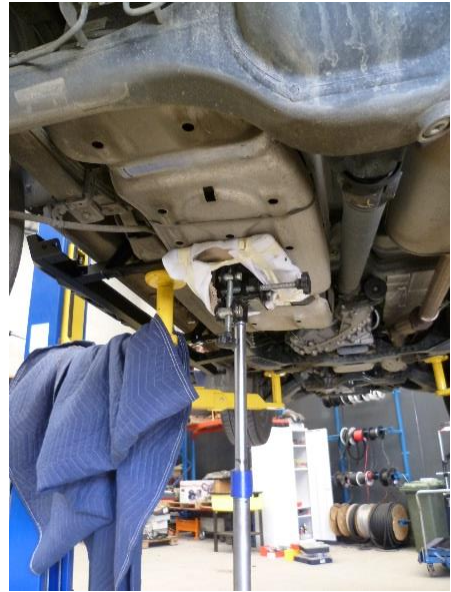


ITEM NO.	PART NUMBER	DESCRIPTION	EXHAUST SPACER/QTY.
1	04-0670	COLORADO STEP EXHAUST SPACER	1
2	M10X40X1.25	BOLT M10 X 40	2
3	M10SW	M10 SPRING WASHER	2
4	M10FWX25	M10 FLAT WASHER X 25MM WIDE	2

Step 3: Relocate Fuel Tank

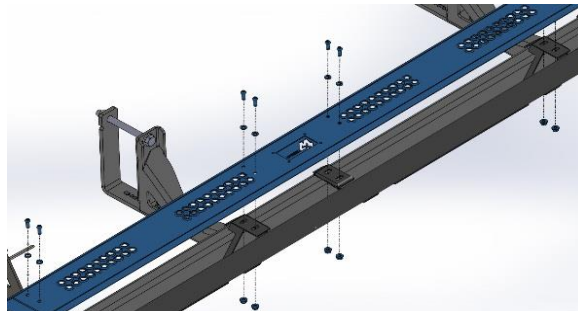
- Support fuel tank
- Loosen 2 bands and lower fuel tank approximately 70-100mm

Caution: Ensure fuel tank is secured when lowered.



Step 4: Prepare Sliders

Fit the tread plate sections to the sliders using M6 button head cap screws and M6 flange nuts.



PART NUMBER	DESCRIPTION	step/QTY.
M6 x 16 BHCS	M6 X 16 BHCS	16
M6 FN	FLANGE NUT M6	16



M6-9Nm

Step 5: Fit Passenger Side Front Mount

- Position the slider against the chassis rail (front mounts slides into chassis mounting location)
- Fit M12x90 Bolt in front mount



Note: Assistance from another person and or hydraulic jack will be required to lift sliders into position.

ITEM NO.	PART NUMBER	DESCRIPTION	Front mount - Locating /QTY.
1	M12X90X1.75	M12 X 90MM X 1.75 BOLT	2
2	M12 HD WASHER	M12 HD WASHER	2
3	M12 SW	M12 SPRING WASHER	2

TABLE SHOWS BOLTS FOR BOTH SIDES



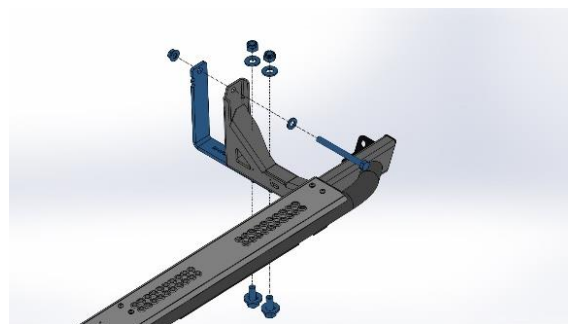
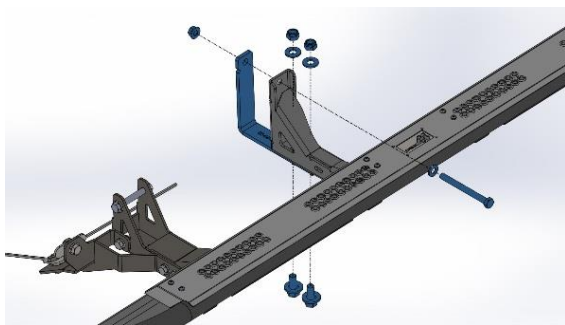
M12-77Nm

Step 6: Fit Passenger Side Middle & Rear Mount

- Loosely fit middle and rear bracket.

Note: Centre bracket is identified by single notch, rear bracket contains 2 notches

Caution: Ensure adequate clearance between all mounting hardware and vehicle fuel and brake lines

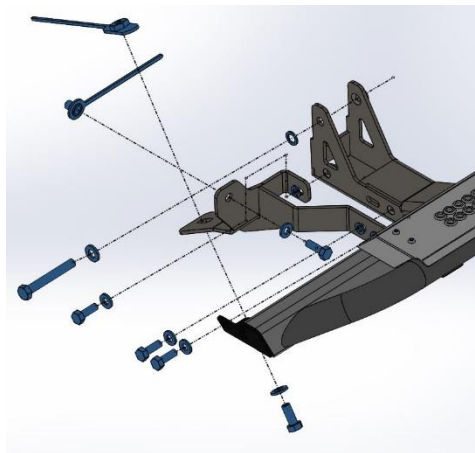


PART NUMBER	DESCRIPTION	mid mount/QTY.	rear mount/QTY.
04-0280	M14 X30X2 CAM BOLT	4	4
M12 HD WASHER	M12 HD WASHER	2	2
M12 X 1.75 FN	M12 FLANGE NUT	2	2
M12X130X1.75	M12 X 130 X 1.75 BOLT	2	2
M14 NYLOC	NYLOC SELF LOCKING NUT, ST STL A2 ISO	4	4
M14 WASHER	M14 WASHER Z/P	4	4

TABLE SHOWS BOLTS FOR BOTH SIDES

Step 7: Secure Passenger Side Sliders

- Align mount holes in front bracket to the corresponding holes in the chassis.
- Fit internal nut plates into chassis, bending plate arms as needed and secure.
- Align sliders to vehicle sills and secure all fasteners in all brackets.
- Tip: A large F clamp or G clamp is useful to hold inner mounts hard up against chassis rails whilst aligning the slider.



ITEM NO.	PART NUMBER	DESCRIPTION	Front mount - secure/QTY.
1	M10 HD WASHER	M10 HD WASHER Z/P	8
2	M10X30	M10 X 1.5 X 30MM BOLT	8
3	04-0252	NUT PLATE ASSY M12 RECOVERY	2
4	M12 HD WASHER	M12 HD WASHER	2
5	M12X30X1.75	BOLT M12 1.75 PITCH	2
6	M10SW	M10 SPRING WASHER	6
7	04-0086	ASSY M10 ROOT NUT PLATE	2

TABLE SHOWS BOLTS FOR BOTH SIDES



M10-44Nm, M12-77Nm

Step 8: Refit Fuel tank

Lift fuel tank back into position and reattach 2 bands supporting fuel tank

Step 9: Repeat Steps 5-7 for Driver Side

Repeat steps 5-7 for driver side.

Step 10: Finish

Step back and admire your work. Awesome job!

Finished Product



Revised: 21/10/2019

***Australia's Best
Off Road Products
Created... Not Cloned***

20 Gateway Drive, Carrum Downs, VIC, 3201

1800 806 952

www.uneek4x4.com.au

