

UNEK44
AUSTRALIA
OFF ROAD ACCESSORIES

SKU: TH-FB-15EPX-ASM0



Fitting Instructions

Toyota Hilux 2015+

Empire Bar

***Australia's Best Off Road Products
Created... Not Cloned***

Contents

WHY BUY UNEEK	3
IMPORTANT INFORMATION	4
COMPONENTS AND PARTS	5
COMPONENTS AND PARTS	6
COMPONENTS AND PARTS	7
STEP 2	8
STEP 3	8
STEP 4	9
STEP 5	9
STEP 6	9
STEP 7	10
STEP 8	10
STEP 9	10
STEP 10	10
STEP 11	11
STEP 12	11
STEP 13	11
STEP 14	12
STEP 15	12
STEP 16	13
STEP 17	13
STEP 18	13
STEP 19	14
STEP 20	14
STEP 21	14
STEP 22	15
STEP 23	15
STEP 24	15
STEP 25	16
STEP 26	16
STEP 27	17
STEP 28	16
STEP 29	17
FINISHED PRODUCT	18

Why Buy Uneek

Australian Designed and Built

All our products are designed and manufactured right here in Australia, allowing us to have better lead times and better quality control than companies manufacturing overseas. By supporting us you're supporting to grow the Australian economy and our brand.

Uneek Styling

We do not design our bars to look the same across the vehicle range. We fully develop our own product to individually suit each vehicle. We take time in designing from scratch and then test all our bars to comply with all relevant ADRs and Australian Standards.

Lightweight Through Smart Engineering

Having a steel bar doesn't mean you have to add more weight than is required to the front of your vehicle. Our engineering practises ensure we have the right protection, designed the right way to ensure protection is at its maximum and weights at its minimum.

Proven Off Road

We take our products out and test them right here in the heart of our country in our Australian conditions so we know our products can withstand anything you throw at them.

Increased Approach Angles

Our bars are designed to give you the best advantage while off road, with increased approach angles means you can tackle those tough and steep angles better than you could with the original setup or other alternatives.

Warranty

Uneek 4x4 back itself as Australia's leading steel bull bar manufacturer. This is why we provide you with the best steel bar warranty in Australia - 5 years

Important Information



PLEASE READ BEFORE INSTALLATION.

- When installed in accordance with these instructions, the front protection bar does not affect the operation of the vehicles SRS airbags.
- This product must be installed exactly as per these instructions using only hardware supplied.
- Take a few moments to read instructions thoroughly before beginning work.
- In the event of damage to any bar component please contact Uneek 4x4 in regards to repair/replacement of components.
- Do not use this product for any vehicle make or model other than that specified on these instructions.
- Do not remove labels from this product.
- This product and its fixings must not be modified in any way unless stated in these fitting instructions.
- The installation of this product is recommended for trained personnel.
- These instructions are correct at time of publication. Uneek 4x4 cannot be held responsible for the impact of any changes subsequently made by the vehicle manufacturer.
- During installation it is the duty of the installer to check correct operation/clearances of all components.
- Refer to rating supplied on tow points. Use in a recovery operation will be at operator's risk.
- Installation time: 4 Hours.
- Vehicle specific notes: Compatible with original fog lights.



EYE & EAR PROTECTION REQUIRED



DRILLING REQUIRED



TWO PERSON LIFT REQUIRED



TORQUE SETTING



CUTTING OR GRINDING REQUIRED

FASTENER TORQUE SETTINGS:

M6 – 9Nm (4lb ft)

M8 – 22Nm (16lb ft)

M10 – 44Nm (32lb ft)

M12 – 77Nm (57lb ft)

TOOLS REQUIRED:

BASIC TOOL KIT WITH SOCKETS, SPANNERS AND HEX KEYS, Power drill with 5mm and 9mm drill bit, rubber mallet, centre punch, hammer.

Components and parts

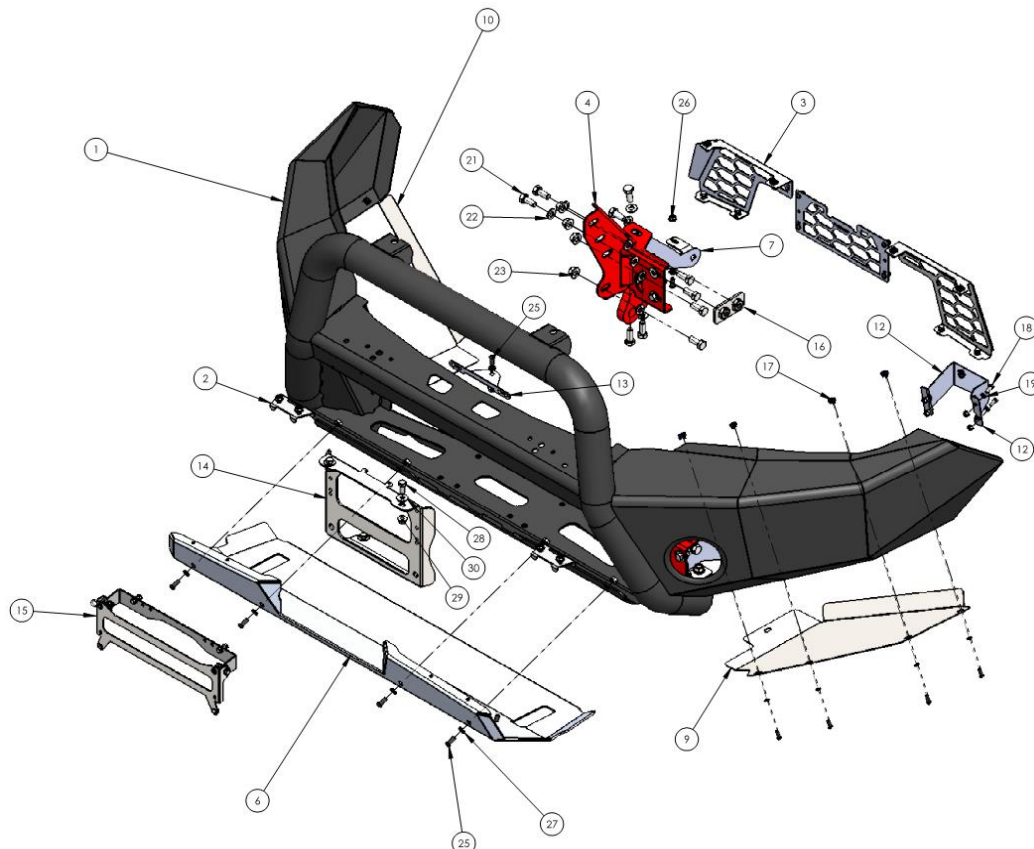
MAIN ASSEMBLY SINGLE HOOP

MAIN PARTS

ITEM NO.	PART NUMBER	DESCRIPTION	Default/QT.Y.
1	TH-FB-15EP-ASM1	TOYOTA HILUX 2015 BAR	1
2	FBA-EP-JP-ASM0	EMPIRE BAR JACK POINT KIT	1
3	TH-FB-15EP-ASM4	HILUX MESH KIT	1
4	TH-FB-15EP-ASM2R	MOUNT BRACKET 2015 HILUX RHS	1
5	TH-FB-15EP-ASM2L	MOUNT BRACKET 2015 HILUX LHS	1
6	TH-FB-15EP-ASM3	HILUX 2015 LOWER PAN ALLOY SILVER	1
7	03-0394R	HILUX 2015 CHASSIS BRACKET	1
8	03-0394L	HILUX 2015 CHASSIS BRACKET	1
9	09-0160L	HILUX 2015 UNDER WING PANEL LHS	1
10	09-0160R	HILUX 2015 UNDER WING PANEL RHS	1
11	03-0398R	HILUX 2015 FOG LIGHT BRACKET RHS	1
12	03-0398L	HILUX 2015 FOG LIGHT BRACKET	1
13	03-0404	CENTRE GRILLE BRACKET	1
14	06-0038	HILUX 2015 FAIRLEAD CRADLE	1
15	NP-F-EP-ASEM0	NUMBER PLATE FLIP EMPIRE BAR	1

SMALL PARTS KIT

ITEM NO.	PART NUMBER	DESCRIPTION	Default/QT.Y.
16	03-0422	2015 HILUX NUT PLATE ASSEMBLY	2
17	M6 CN 3MM	CAGE NUT M6x2.6-3.5	8
18	M6 x 16BHCSBZP	M6 x 16 BHCS BLACK ZINC PLATE	8
19	M6 FW BLACK	FLAT WASHER 6MM BLACK	8
20	M6 FW	FLAT WASHER 6MM	12
21	M6 FN	FLANGE NUT M6	12
22	M6 x 20	M6 X 20 HEX BOLT Z/P	12
23	M12X30X1.75	BOLT M12 1.75 PITCH	18
24	M12 FW	M12 FLAT WASHER	18
25	M12 X 1.75 FN	M12 FLANGE NUT	14
26	M12X30X1.25	M12 X 30 X 1.25 FINE PITCH BOLT	2
27	M8X20 BHCS BZP	M8X20 BUTTON HEAD CAP SCREW BLACK ZP	9
28	M8 FN	FLANGE NUT M8	9
29	M8 WASHER BZP	M8 WASHER BLACK ZP	9
30	M10-1.5 x 20	M10x20 HEX BOLT Z/P	8
31	M10 FN	M10 Flange nut	8
32	M10 FLAT WASHER X 25	M10 FW	12



Components and parts

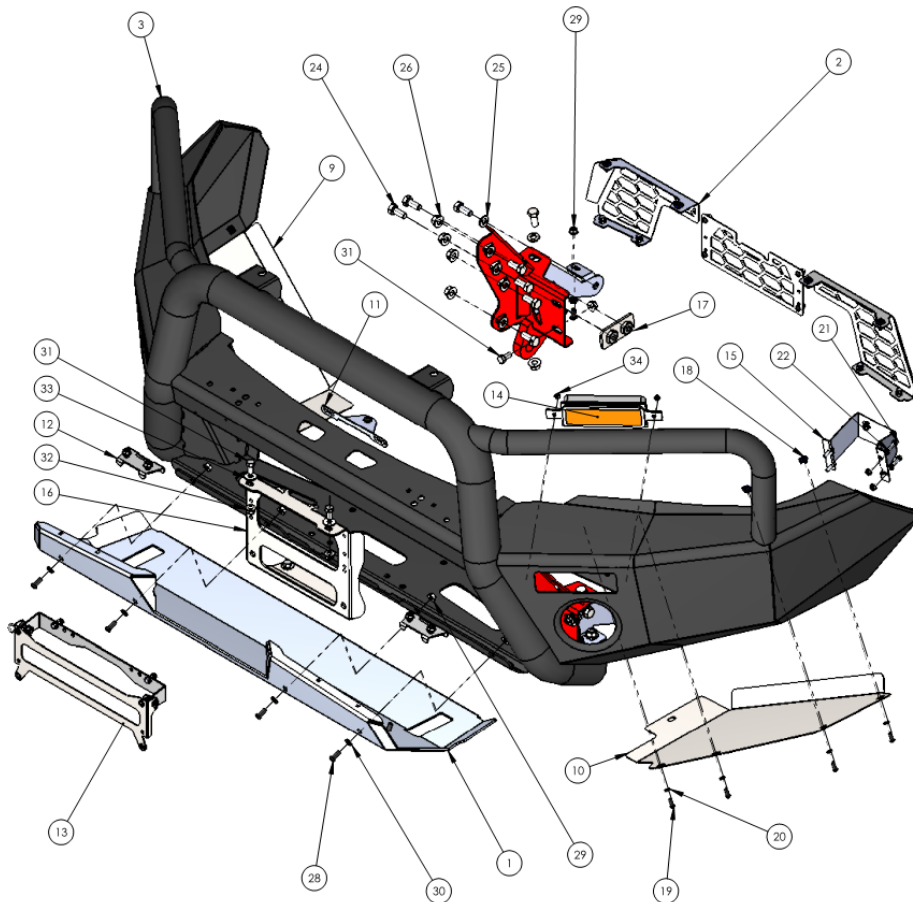
MAIN ASSEMBLY TRIPLE HOOP

MAIN PARTS

ITEM NO.	PART NUMBER	DESCRIPTION	QTY.
1	TH-FB-15EP-ASM3	HILUX 2015 LOWER PAN ALLOY SILVER	1
2	TH-FB-15EP-ASM4	HILUX MESH KIT	1
3	TH-FB-15EPC-ASM1	TOYOTA HILUX 2015 BAR CLASSIC	1
4	TH-FB-15EP-ASM2L	MOUNT BRACKET 2015 HILUX RHS	1
5	TH-FB-15EP-ASM2R	MOUNT BRACKET 2015 HILUX RHS	1
6	03-0394R	HILUX 2015 CHASSIS BRACKET	1
7	03-0394L	HILUX 2015 CHASSIS BRACKET	1
8	03-0398R	HILUX 2015 FOG LIGHT BRACKET RHS	1
9	09-0160R	HILUX 2015 UNDER WING PANEL RHS	1
10	09-0160L	HILUX 2015 UNDER WING PANEL LHS	1
11	03-0404	CENTRE GRILLE BRACKET	1
12	FBA-EP-JP-ASMO	EMPIRE BAR JACK POINT KIT	1
13	NP-F-EP-ASEM0	NUMBER PLATE FLIP EMPIRE BAR	1
14	NARVA 95202	NARVA LED INDICATOR 95202	2
15	03-0398L	HILUX 2015 FOG LIGHT BRACKET	1
16	06-0038	HILUX 2015 FAIRLEAD CRADLE	1

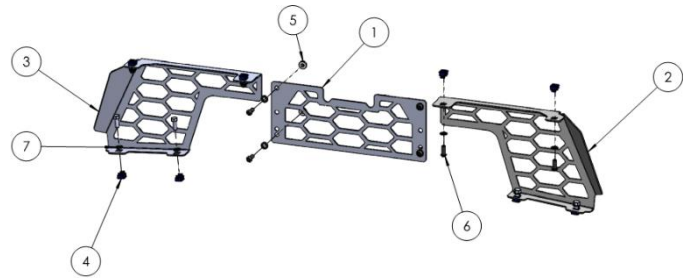
SMALL PARTS KIT

ITEM NO.	PART NUMBER	DESCRIPTION	QTY.
17	03-0422	2015 HILUX NUT PLATE ASSEMBLY	2
18	M6 CN 3MM	CAGE NUT M6x2.6-3.5	8
19	M6 x 16BHCSBZP	M6 x 16 BHCS BLACK ZINC PLATE	8
20	M6 FW BLACK	FLAT WASHER 6MM BLACK	8
21	M6X20	BOLT M6 X 20	12
22	M6 FW	FLAT WASHER 6MM	12
23	M6 FN	FLANGE NUT M6	12
24	M12X30X1.75	BOLT M12 1.75 PITCH	18
25	M12 FW	M12 FLAT WASHER	18
26	M12 X 1.75 FN	M12 FLANGE NUT	14
27	M12X30X1.25	M12 X 30 X 1.25 FINE PITCH BOLT	2
28	M8X20 BHCS BZP	M8X20 BUTTON HEAD CAP SCREW BLACK ZP	9
29	M8 FN	FLANGE NUT M8	9
30	M8 WASHER BZP	M8 WASHER BLACK ZP	9
31	M10-1.5 x 20	M10x20 HEX BOLT Z/P	8
32	M10 FN	M10 Flange nut	8
33	M10 FLAT WASHER X 25	M10 FW	12
34	M5 FN	M5 FLANGE NUT	4

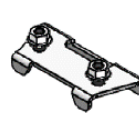
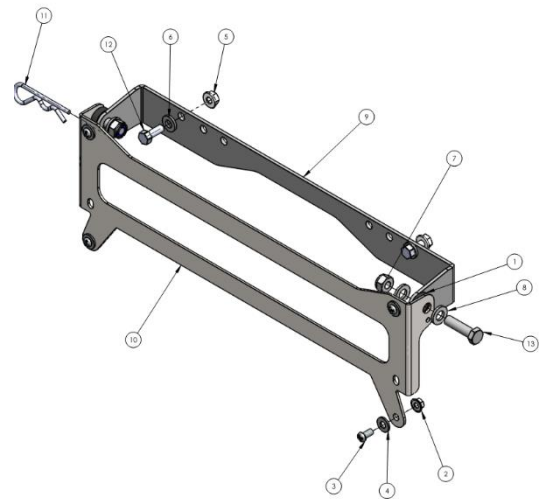


Components and parts

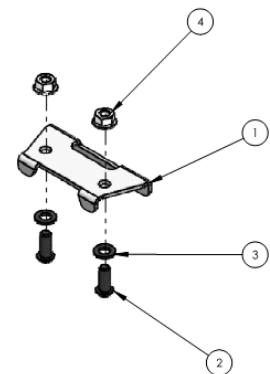
ITEM NO.	PART NUMBER	DESCRIPTION	QTY.
1	09-0164	MESH CENTER LC200 2015	1
2	09-0170L	MESH HILUX 2015	1
3	09-0170R	MESH HILUX 2015	1
4	M6 CN 2MM	CAGE NUT M6x1.7-2.7	8
5	M6 FN	FLANGE NUT M6	4
6	M6 x 16BHCSBZP	M6 x 16 BHCS BLACK ZINC PLATE	8
7	M6 FW BLACK	FLAT WASHER 6MM BLACK	12
8	M6X16 BZP	BOLT M6 X 16 BLACK	4



ITEM NO.	PART NUMBER	DESCRIPTION	QTY.
1	HDPE SPACER-BLACK	HDPE SPACER - OD 20 X ID 8 X 6MM THICK BLACK	2
2	M5 FN	M5 FLANGE NUT	4
3	M5X10 PSCREW	M5 X 10 PH SCREW	4
4	m5 washer	M5 washer	4
5	M6 FN	FLANGE NUT M6	2
6	M6 washer	m6 washer	2
7	M8 NYLOC	NYLOC SELF LOCKING NUT, ST STL A2 ISO	2
8	M8 WASHER	M8 WASHER	4
9	NP-F-EP-1	NUMBER PLATE FLIP EMPIRE REAR	1
10	NP-F-EP-2	NUMBER PLATE FLIP EMPIRE FRONT	1
11	R clip- cotter pin	R Clip	1
12	M6X16 BZP	BOLT M6 X 16 BLACK	2
13	M8 X 30	M8 X 30 HEX BOLT 8.8 Z/P	2



ITEM NO.	PART NUMBER	DESCRIPTION	QTY.
1	03-0400	HIGH LIFT JACK POINT	2
2	M8X20 BHCS BZP	M8X20 BUTTON HEAD CAP SCREW BLACK ZP	4
3	M8 WASHER BZP	M8 WASHER BLACK ZP	4
4	M8 FN	FLANGE NUT M8	4



Step 1

Open bonnet and remove black plastic cover from top of radiator.



Step 2

Remove M6 bolts holding grille in.



Step 3

Reach behind grille and remove bolt at centre of bumper bar.



Step 4

Remove clips holding bumper on. Clips are located in wheel arch and under the vehicle.



Step 5

Starting at each corner of bumper bar. Pop bumper away from plastic retainers.

Carefully lift bumper away. As bumper comes away reach behind and unplug fog lights.

An assistant is very helpful for this step!



Step 6

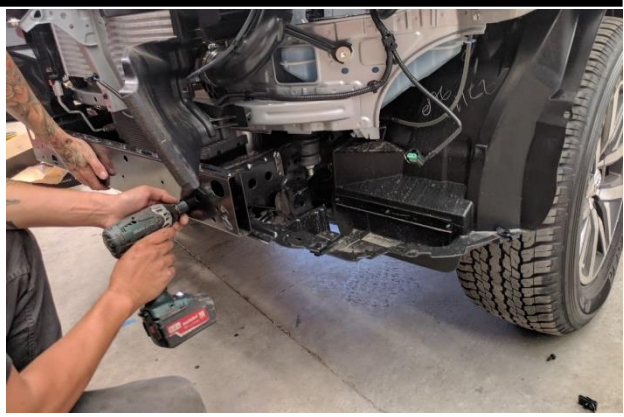
Remove upper and lower plastic bumper supports.



Step 7

Unbolt lower crash beam from chassis.

Retain these bolts.



Step 8

Remove plastic trim from the front of lower bash plate.

Retain these bolts.



Step 9

Remove black plastic bumper retainers from each side panel.

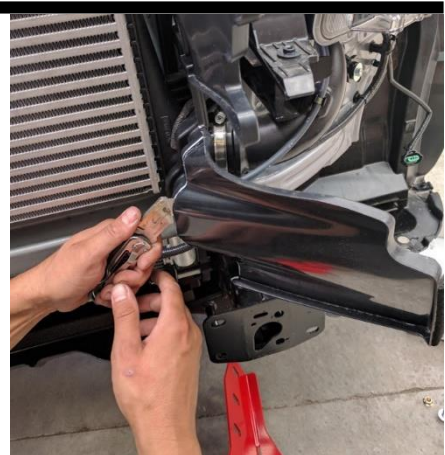
First remove screws, before pulling away.

These can be very tight to pull away! A small plastic lever behind can assist.



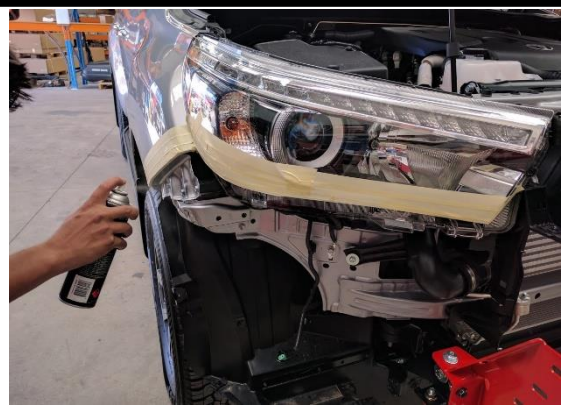
Step 10

Trim plastic air dams to suit bull bar mounts. If necessary, hold mount up to chassis rail to see how much to trim off.



Step 11

Mask off headlight and panel and paint edges of panel and headlight which could be seen between bar and body black.



Step 12

If fitting winch, remove temperature sensor from centre of radiator support and cable tie to the left-hand side of the radiator support.



Step 13

Cut locating tab off grille.
Clip in.



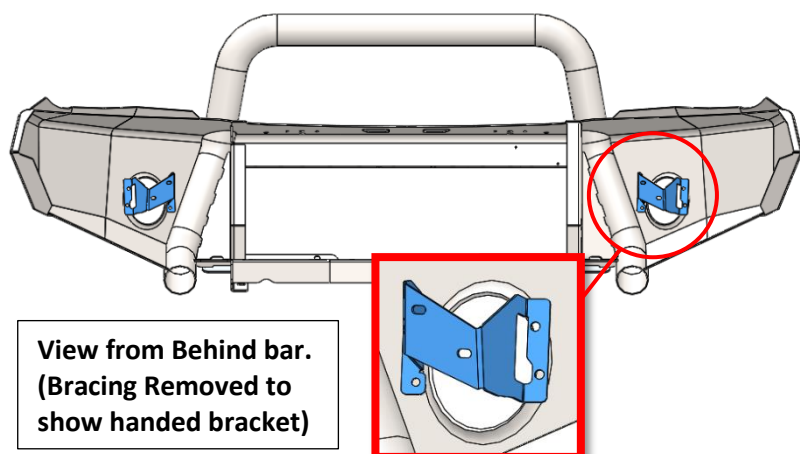
Step 14

Clip on grille retainer bracket and refit to car.
Secure grille retaining bracket using original screw.



Step 15

Remove fog lights from original bumper.
Bolt into fog light brackets shown using M6 bolt, washers and flange nut.
Bolt into bar using additional M6 bolts, washers and flange nuts.
Adjust using the lower original adjustment not until approximately horizontal.
Adjust to light to the centre
Torque bolts.



Step 16

Triple hoop only

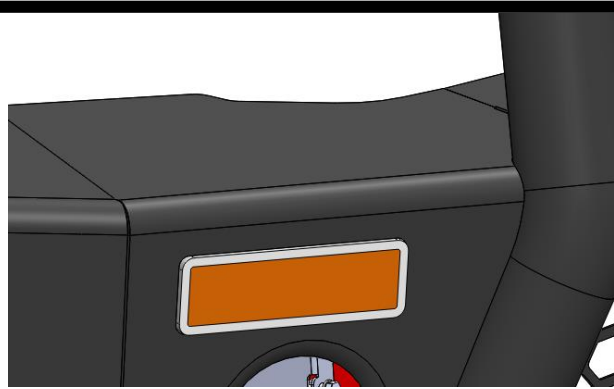
Fit indicators into Uneek bar using M5 nuts.

Cut indicator cable in half.

Splice/solder the free end of the cable into the vehicle wiring.

Fit male/female spade connectors to enable cable to be reconnected once bar is fitted.

Note: For vehicles used in harsh environments sealed connectors recommended.



Step 17

Fit 4x cage nuts into each wing.



Step 18

Fit chassis braces to the outside each side of chassis as shown.

Use **M12 fine thread bolt and washer** into rear captive nut.

Use **M12 Course thread bolts and washers** into the supplied captive nut plate which is slid inside the chassis.

DO NOT TIGHTEN.



Step 19

Fit red chassis mounts to each chassis end.

Flanges on each chassis mount point outwards.

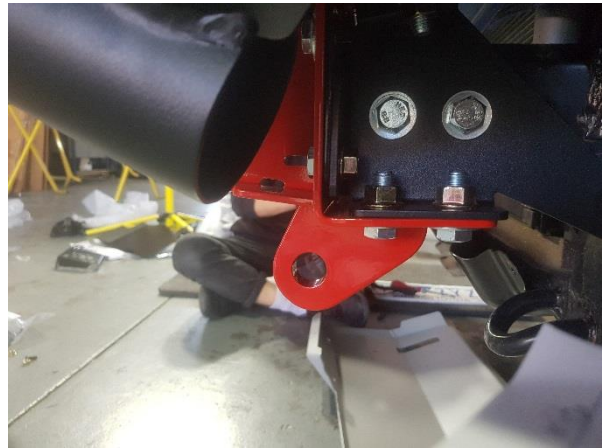
Secure front face into captive nuts using bolts removed from OE crash beam.

In positions with no captive nuts on front face use M10x20 bolts, washers and flange nuts.

In all other holes use **M12 course thread bolts**, flat washers and flange nuts.

NOTE:

Bolts on bottom of chassis rail facing vertical must be fed through the bottom.



Step 20

With help from an assistant lift bar onto mounts.

Adjust bar left or right to achieve symmetrical fit.

Torque mount to chassis bolts.



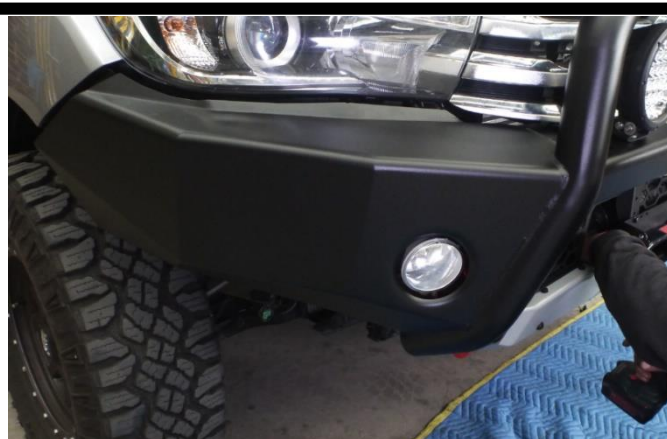
Step 21

Adjust bar for best fit on vehicle.

Aim for approximately:

20mm between guards and quarter panels and 10mm gap under the grille.

Wing rear edge should line up with wheel arch.

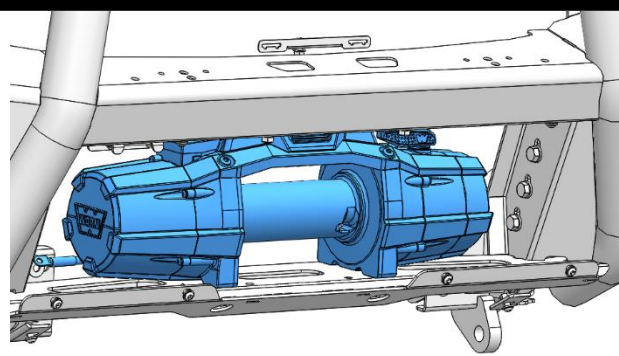


Step 22

Fit winch if required.

This bar suits most standard body low mount winches.

Plasma rope winches and hawse fairleads recommended. If fitting roller fairlead number plate flip will need spacing forward.



Winch mounts feet down and is installed through the front of the bar.

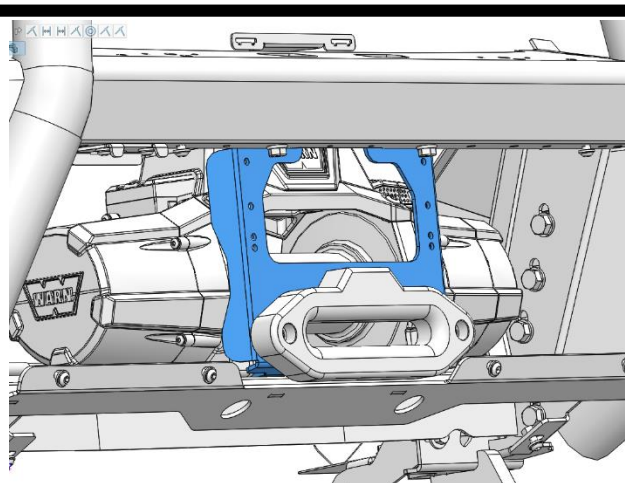
Control boxes mount on top of winch using brackets supplied in the winch fitting kit.

Refer to winch fitting instructions for more information.

Step 23

Fit winch fairlead onto fairlead cradle as shown. Using bolts from winch kit

Fit fairlead cradle into the bar using 4xM10 bolts, washers and nuts from bullbar kit.



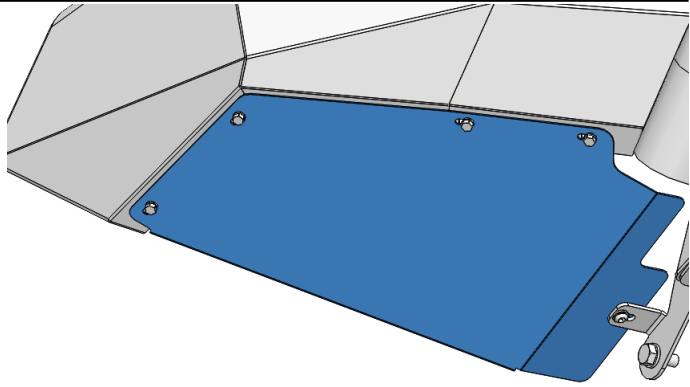
Step 24

Fit any driving lights or light bars required.



Step 25

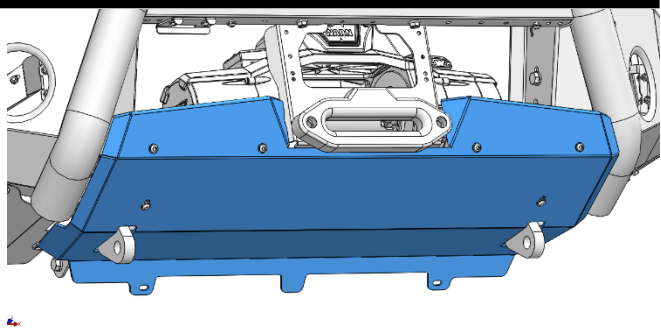
Fit wing under panels using M6 bolts, flat washers and cage nuts installed in the bar previously.



Step 26

Fit centre bash plate using M8 done head bolts, flat washers and flange nuts.

On lower holes to OE bash plate use original bolts.



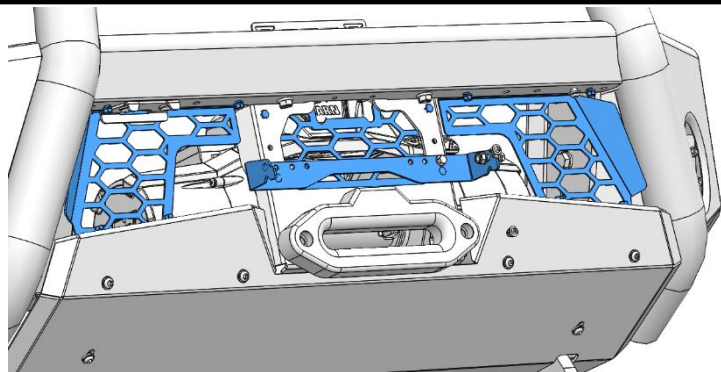
Step 27

Fit mesh grilles. Using M6 bolts, cage nuts and washers.

NOTE:

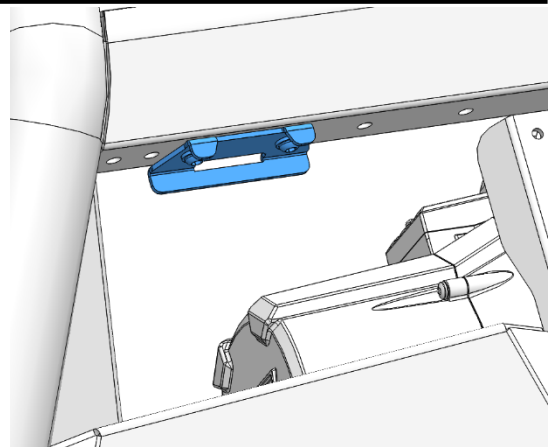
Install cage nuts facing outwards.
Mesh fits behind bash plate & top support.

Centre Mesh fits behind winch cradle.



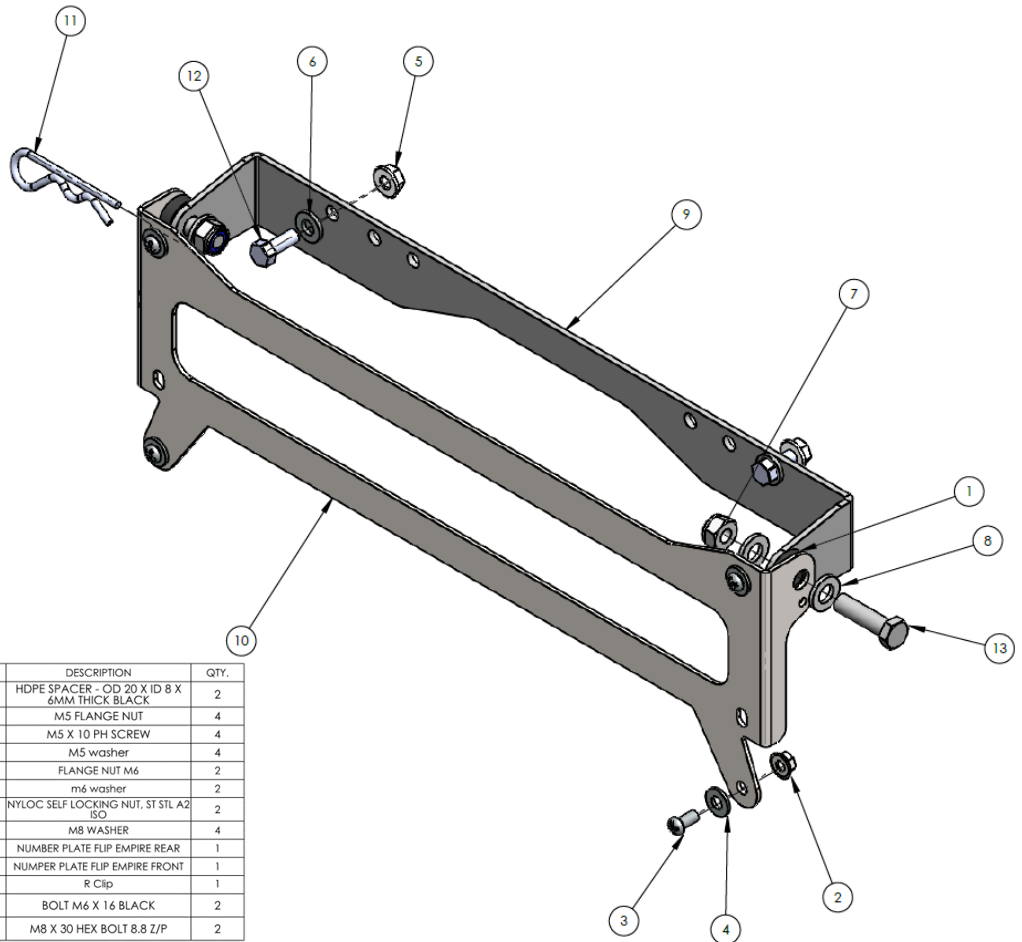
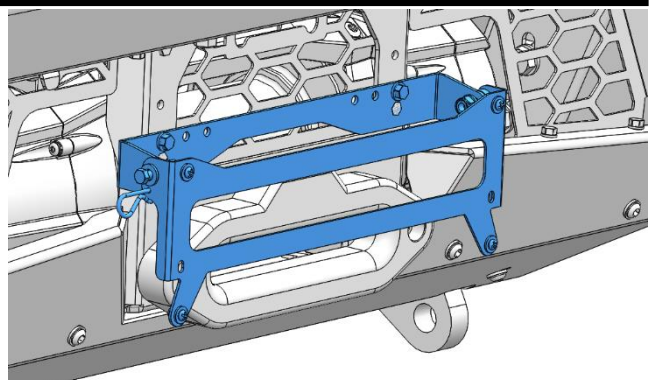
Step 28

Fit Jack points using M8 button head bolts and black flat washers.



Step 29

Fit flip brackets and number plate using M5 and M6 bolts, spacers washers and nyloc nuts.



ITEM NO.	PART NUMBER	DESCRIPTION	QTY.
1	HDPE SPACER-BLACK	HDPE SPACER - OD 20 X ID 8 X 6MM THICK BLACK	2
2	M5 FN	M5 FLANGE NUT	4
3	M5X10 PSCREW	M5 X 10 PH SCREW	4
4	m5 washer	M5 washer	4
5	M6 FN	FLANGE NUT M6	2
6	M6 washer	m6 washer	2
7	M8 NYLOC	NYLOC SELF-LOCKING NUT, ST STL A2 ISO	2
8	M8 WASHER	M8 WASHER	4
9	NP-F-EP-1	NUMBER PLATE FLIP EMPIRE REAR	1
10	NP-F-EP-2	NUMBER PLATE FLIP EMPIRE FRONT	1
11	R clip- cotter pin	R Clip	1
12	M6X16 BZP	BOLT M6 X 16 BLACK	2
13	M8 X 30	M8 X 30 HEX BOLT 8.8 Z/P	2

Finished Product



Revised: 17/03/2020

***Australias Best
Off Road Products
Created... Not Cloned***

20 Gateway Drive, Carrum Downs, VIC, 3201

1800 806 952

www.uneek4x4.com.au

