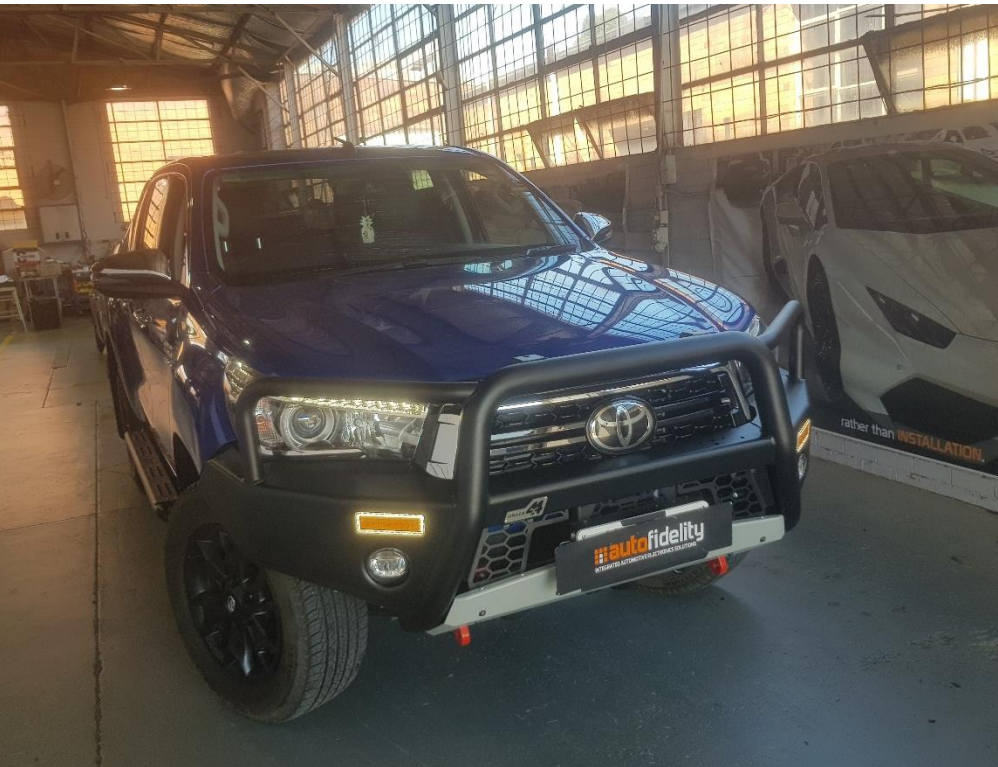


**UNEK44**  
AUSTRALIA  
OFF ROAD ACCESSORIES

**SKU: TH-FB-18EPX-ASM0**



## ***Fitting Instructions***

***Toyota Hilux 2018 - 2020***

***Empire Bar***

***Australia's Best Off Road Products  
Created... Not Cloned***

# Contents

---

<b>WHY BUY UNEEK</b>	<b>3</b>
<b>IMPORTANT INFORMATION</b>	<b>4</b>
<b>COMPONENTS AND PARTS</b>	<b>5</b>
<b>COMPONENTS AND PARTS</b>	<b>6</b>
<b>COMPONENTS AND PARTS</b>	<b>7</b>
<b>STEP 1</b>	<b>8</b>
<b>STEP 2</b>	<b>8</b>
<b>STEP 3</b>	<b>8</b>
<b>STEP 4</b>	<b>8</b>
<b>STEP 5</b>	<b>9</b>
<b>STEP 6</b>	<b>9</b>
<b>STEP 7</b>	<b>9</b>
<b>STEP 8</b>	<b>9</b>
<b>STEP 9</b>	<b>10</b>
<b>STEP 10</b>	<b>10</b>
<b>STEP 11</b>	<b>10</b>
<b>STEP 12</b>	<b>10</b>
<b>STEP 13</b>	<b>11</b>
<b>STEP 14</b>	<b>11</b>
<b>STEP 15</b>	<b>11</b>
<b>STEP 16</b>	<b>12</b>
<b>STEP 17</b>	<b>12</b>
<b>STEP 18</b>	<b>13</b>
<b>STEP 19</b>	<b>13</b>
<b>STEP 20</b>	<b>13</b>
<b>STEP 21</b>	<b>14</b>
<b>STEP 22</b>	<b>14</b>
<b>STEP 23</b>	<b>14</b>
<b>STEP 24</b>	<b>15</b>
<b>STEP 25</b>	<b>15</b>
<b>STEP 26</b>	<b>15</b>
<b>STEP 27</b>	<b>15</b>
<b>STEP 28</b>	<b>16</b>
<b>STEP 29</b>	<b>16</b>
<b>STEP 30</b>	<b>16</b>
<b>FINISHED PRODUCT</b>	<b>18</b>

# ***Why Buy Uneek***

---

## ***Australian Designed and Built***

All our products are designed and manufactured right here in Australia, allowing us to have better lead times and better quality control than companies manufacturing overseas. By supporting us you're supporting to grow the Australian economy and our brand.

## ***Uneek Styling***

We do not design our bars to look the same across the vehicle range. We fully develop our own product to individually suit each vehicle. We take time in designing from scratch and then test all our bars to comply with all relevant ADRs and Australian Standards.

## ***Lightweight Through Smart Engineering***

Having a steel bar doesn't mean you have to add more weight than is required to the front of your vehicle. Our engineering practises ensure we have the right protection, designed the right way to ensure protection is at its maximum and weights at its minimum.

## ***Proven Off Road***

We take our products out and test them right here in the heart of our country in our Australian conditions so we know our products can withstand anything you throw at them.

## ***Increased Approach Angles***

Our bars are designed to give you the best advantage while off road, with increased approach angles means you can tackle those tough and steep angles better than you could with the original setup or other alternatives.

## ***Warranty***

Uneek 4x4 back itself as Australia's leading steel bull bar manufacturer. This is why we provide you with the best steel bar warranty in Australia - 5 years.

# Important Information

---



## PLEASE READ BEFORE INSTALLATION.

- When installed in accordance with these instructions, the front protection bar does not affect the operation of the vehicles SRS airbags.
- This product must be installed exactly as per these instructions using only hardware supplied.
- Take a few moments to read instructions thoroughly before beginning work.
- In the event of damage to any bar component please contact Uneek 4x4 in regards to repair/replacement of components.
- Do not use this product for any vehicle make or model other than that specified on these instructions.
- Do not remove labels from this product.
- This product and its fixings must not be modified in any way unless stated in these fitting instructions.
- The installation of this product is recommended for trained personnel.
- These instructions are correct at time of publication. Uneek 4x4 cannot be held responsible for the impact of any changes subsequently made by the vehicle manufacturer.
- During installation it is the duty of the installer to check correct operation/clearances of all components.
- Refer to rating supplied on tow points. Use in a recovery operation will be at operator's risk.
- Installation time: 4 Hours.
- Vehicle specific notes: Compatible with Original fog lights.



---

### EYE & EAR PROTECTION REQUIRED



---

### DRILLING REQUIRED



---

### TWO PERSON LIFT REQUIRED



---

### TORQUE SETTING



---

### CUTTING OR GRINDING REQUIRED

---

#### FASTENER TORQUE SETTINGS:

M6 – 9Nm (4lb ft)

M8 – 22Nm (16lb ft)

M10 – 44Nm (32lb ft)

M12 – 77Nm (57lb ft)

TOOLS REQUIRED:

**BASIC TOOL KIT WITH SOCKETS, SPANNERS AND HEX KEYS, Power drill with 5mm and 9mm drill bit, rubber mallet, centre punch, hammer.**

# Components and parts

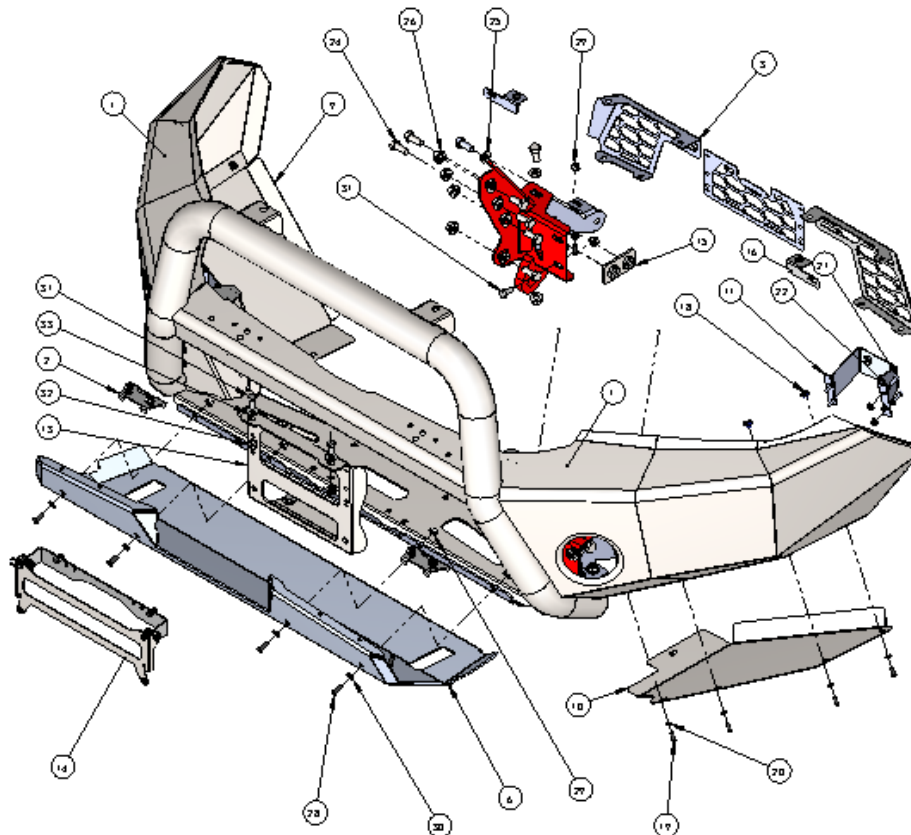
## MAIN ASSEMBLY SINGLE HOOP

### MAIN PARTS

ITEM NO.	PART NUMBER	DESCRIPTION	QTY.
1	TH-FB-18EP-AS M1	TOYOTA HILUX 2018 BAR	1
2	FBA-EP-JP-AS M0	EMPIRE BAR JACK POINT KIT	1
3	TH-FB-1SEP-AS M4	HILUX MESH KIT	1
4	TH-FB-1SEP-AS M2L	MOUNT BRACKET 2015 HILUX RHS	1
5	TH-FB-1SEP-AS M2R	MOUNT BRACKET 2015 HILUX RHS	1
6	TH-FB-1SEP-AS M3	HILUX 2015 LOWER PAN ALLOY SILVER	1
7	03-03P4R	HILUX 2015 CHASSIS BRACKET	1
8	03-03P4L	HILUX 2015 CHASSIS BRACKET	1
9	09-0140R	HILUX 2015 UNDER WING PANEL RHS	1
10	09-0140L	HILUX 2015 UNDER WING PANEL LHS	1
11	03-03P8L	HILUX 2015 FOG LIGHT BRACKET	1
12	03-03P8R	HILUX 2015 FOG LIGHT BRACKET RHS	1
13	06-0038	HILUX 2015 FAIRLEAD CRADLE	1
14	NP-F-EP-ASEM0	NUMBER PLATE FLIP EMPIRE BAR	1

### SMALL PARTS KIT

ITEM NO.	PART NUMBER	DESCRIPTION	QTY.
15	03-0422	2015 HILUX NUT PLATE ASSEMBLY	2
16	03-0448L	HILUX 2018+ OUTER GRILLE BRACKET	1
17	03-0448R	HILUX 2018+ OUTER GRILLE BRACKET	1
18	M6 CN 3MM	CAGE NUT M6x2.6-3.5	8
19	M6 x 16 BHCS BZP	M6 x 16 BHCS BLACK ZINC PLATE	8
20	M6 FW BLACK	FLAT WASHER 6MM BLACK	8
21	M6 X 20	BOLT M6 X 20	12
22	M6 FW	FLAT WASHER 6MM	12
23	M6 FN	FLANGE NUT M6	12
24	M12 X 30 X 1.75	BOLT M12 1.75 PITCH	18
25	M12 FW	M12 FLAT WASHER	18
26	M12 X 1.75 FN	M12 FLANGE NUT	14
27	M12 X 30 X 1.25	M12 X 30 X 1.25 FINE PITCH BOLT	2
28	M8 X 20 BHCS BZP	M8 X 20 BUTTON HEAD CAP SCREW BLACK ZP	10
29	M8 FN	FLANGE NUT M8	10
30	M8 WASHER BZP	M8 WASHER BLACK ZP	10
31	M10-1.5 x 20	M10x20 HEX BOLT Z/P	8
32	M10 FN	M10 Flange nut	8
33	M10 FLAT WASHER X 25	M10 FW	12



# Components and parts

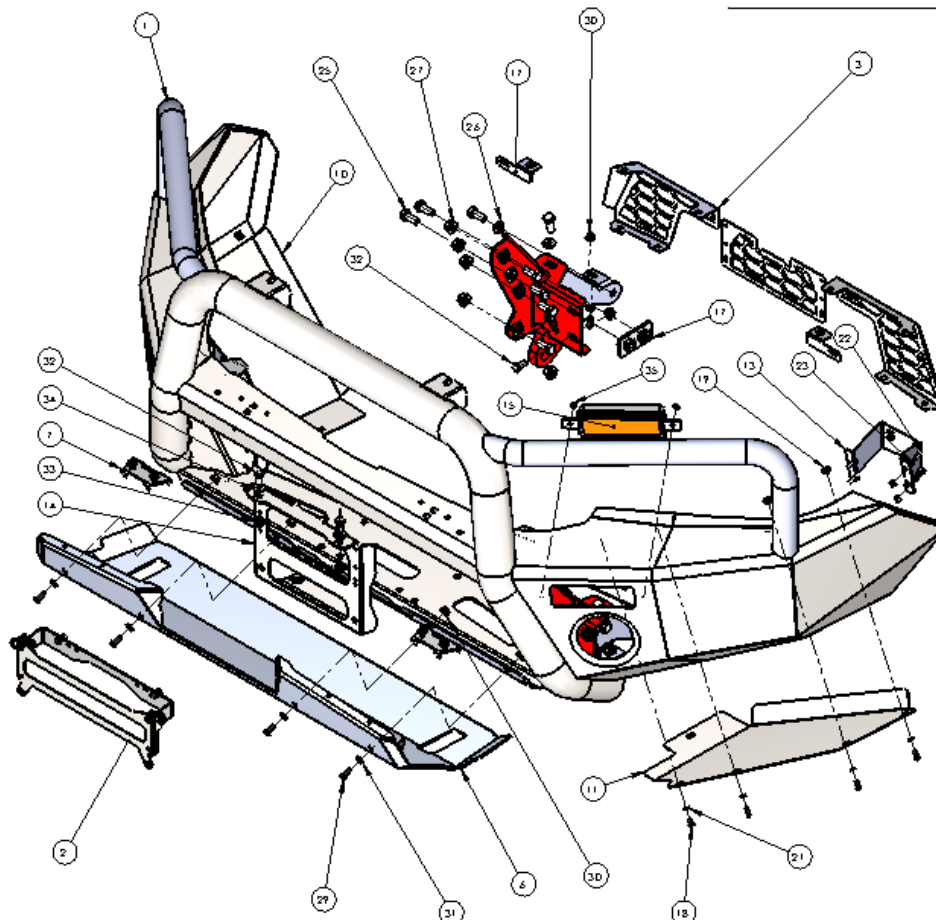
## MAIN ASSEMBLY TRIPLE HOOP

### MAIN PARTS

ITEM NO.	PART NUMBER	DESCRIPTION	QTY.
1	TH-FB-18EP-AS M1	TOYOTA HILUX 2018 BAR	1
2	FBA-EP-JP-AS M0	EMPIRE BAR JACK POINT KIT	1
3	TH-FB-15EP-AS M4	HILUX MESH KIT	1
4	TH-FB-15EP-AS M2L	MOUNT BRACKET 2015 HILUX RHS	1
5	TH-FB-15EP-AS M2R	MOUNT BRACKET 2015 HILUX RHS	1
6	TH-FB-15EP-AS M3	HILUX 2015 LOWER PAN ALLOY SILVER	1
7	03-0394R	HILUX 2015 CHASSIS BRACKET	1
8	03-0394L	HILUX 2015 CHASSIS BRACKET	1
9	09-0140R	HILUX 2015 UNDER WING PANEL RHS	1
10	09-0140L	HILUX 2015 UNDER WING PANEL LHS	1
11	03-0398L	HILUX 2015 FOG LIGHT BRACKET	1
12	03-0398R	HILUX 2015 FOG LIGHT BRACKET RHS	1
13	06-0038	HILUX 2015 FAIRLEAD CRADLE	1
14	NP-F-EP-AS EM0	NUMBER PLATE FLIP EMPIRE BAR	1

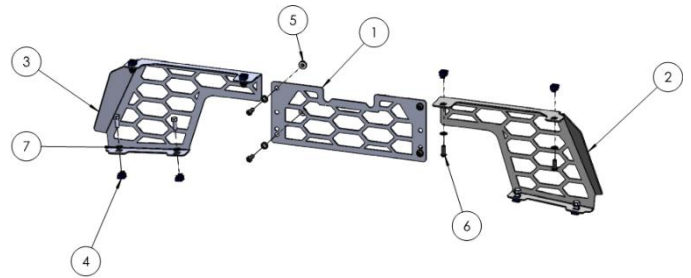
### SMALL PARTS KIT

ITEM NO.	PART NUMBER	DESCRIPTION	QTY.
15	03-0422	2015 HILUX NUT PLATE ASSEMBLY	2
16	03-0448L	HILUX 2018+ OUTER GRILLE BRACKET	1
17	03-0448R	HILUX 2018+ OUTER GRILLE BRACKET	1
18	M6 CN 3MM	CAGE NUT M6x2.6-3.5	8
19	M6 x 16 BHCS BZP	M6 x 16 BHCS BLACK ZINC PLATE	8
20	M6 FW BLACK	FLAT WASHER 6MM BLACK	8
21	M6 X 20	BOLT M6 X 20	12
22	M6 FW	FLAT WASHER 6MM	12
23	M6 FN	FLANGE NUT M6	12
24	M12 X 30 X 1.75	BOLT M12 1.75 PITCH	18
25	M12 FW	M12 FLAT WASHER	18
26	M12 X 1.75 FN	M12 FLANGE NUT	14
27	M12 X 30 X 1.25	M12 X 30 X 1.25 FINE PITCH BOLT	2
28	M8 X 20 BHCS BZP	M8 X 20 BUTTON HEAD CAP SCREW BLACK ZP	10
29	M8 FN	FLANGE NUT M8	10
30	M8 WASHER BZP	M8 WASHER BLACK ZP	10
31	M10-1.5 x 20	M10x20 HEX BOLT Z/P	8
32	M10 FN	M10 Flange nut	8
33	M10 FLAT WASHER X 25	M10 FW	12

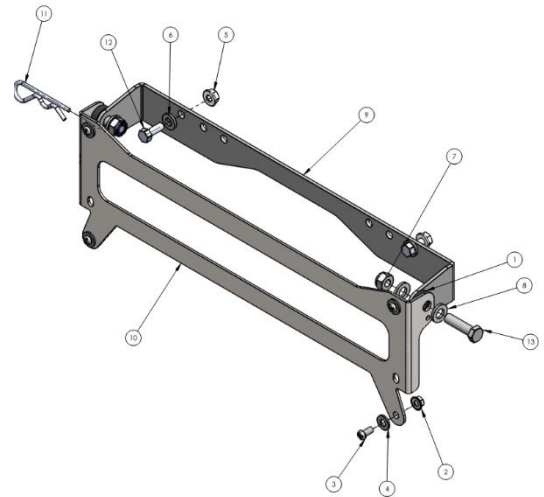


# Components and parts

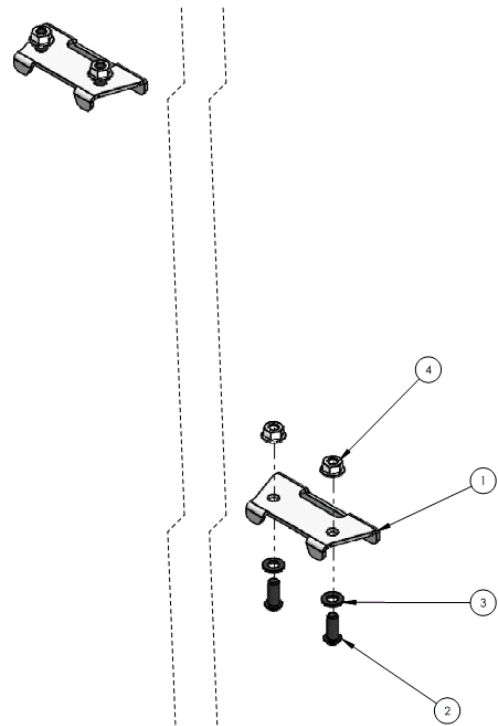
ITEM NO.	PART NUMBER	DESCRIPTION	QTY.
1	09-0164	MESH CENTER LC200 2015	1
2	09-0170L	MESH HILUX 2015	1
3	09-0170R	MESH HILUX 2015	1
4	M6 CN 2MM	CAGE NUT M6x1.7-2.7	8
5	M6 FN	FLANGE NUT M6	4
6	M6 x 16BHCSBZP	M6 x 16 BHCS BLACK ZINC PLATE	8
7	M6 FW BLACK	FLAT WASHER 6MM BLACK	12
8	M6X16 BZP	BOLT M6 X 16 BLACK	4



ITEM NO.	PART NUMBER	DESCRIPTION	QTY.
1	HDPE SPACER-BLACK	HDPE SPACER - OD 20 X ID 8 X 6MM THICK BLACK	2
2	M5 FN	M5 FLANGE NUT	4
3	M5X10 PSCREW	M5 X 10 PH SCREW	4
4	m5 washer	M5 washer	4
5	M6 FN	FLANGE NUT M6	2
6	M6 washer	m6 washer	2
7	M8 NYLOC	NYLOC SELF LOCKING NUT, ST STL A2 ISO	2
8	M8 WASHER	M8 WASHER	4
9	NP-F-EP-1	NUMBER PLATE FLIP EMPIRE REAR	1
10	NP-F-EP-2	NUMBER PLATE FLIP EMPIRE FRONT	1
11	R clip- cotter pin	R Clip	1
12	M6X16 BZP	BOLT M6 X 16 BLACK	2
13	M8 X 30	M8 X 30 HEX BOLT 8.8 Z/P	2



ITEM NO.	PART NUMBER	DESCRIPTION	QTY.
1	03-0400	HIGH LIFT JACK POINT	2
2	M8X20 BHCS BZP	M8X20 BUTTON HEAD CAP SCREW BLACK ZP	4
3	M8 WASHER BZP	M8 WASHER BLACK ZP	4
4	M8 FN	FLANGE NUT M8	4



## Step 1

Open bonnet and remove black plastic cover from top of radiator.



## Step 2

Remove M6 bolts holding grille in.

**NOTE:**

If your vehicle has Toyota Safety Sense, disconnect the radar located in the Toyota badge



## Step 3

Reach behind grille and remove bolt at centre of bumper bar.



## Step 4

Remove clips holding bumper on. Clips are located in wheel arch and under the vehicle.





## **Step 5**

Starting at each corner of bumper bar. Pop bumper away from plastic retainers.

Carefully lift bumper away. As bumper comes away reach behind and unplug fog lights.

An assistant is very helpful for this step!



## **Step 6**

Remove upper and lower plastic bumper supports.



## **Step 7**

Unbolt lower crash beam from chassis.

**Retain these bolts.**



## **Step 8**

Remove plastic trim from the front of lower bash plate.

**Retain these bolts.**



## **Step 9**

Remove black plastic bumper retailers from each side panel.

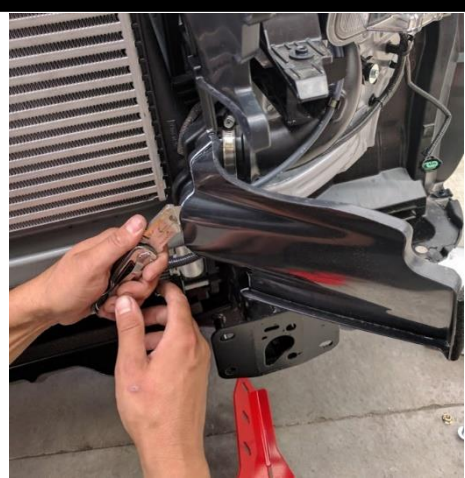
First remove screws, before pulling away.

These can be very tight to pull away! A small plastic lever behind can assist.



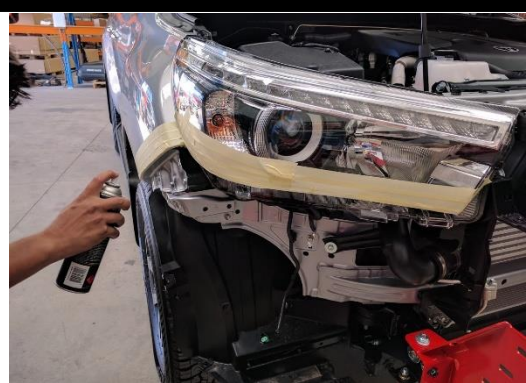
## **Step 10**

Trim plastic air dams to suit bull bar mounts. If necessary hold mount up to chassis rail to see how much to trim off.



## **Step 11**

Mask off headlight and panel and then paint edges of panel and headlight which could be seen between bar and body black.



## **Step 12**

If fitting winch, remove temperature sensor from centre of radiator support and cable tie to the left-hand side of the radiator support.



## Step 13

Trim lower edge of grille as shown.



## Step 14

Using M6 Bolts Button head, flat washer and flange nut. Bolt grille retainer bracket to original bumper bar mount.

Note.

Orientate grille bracket outwards and downwards off bolt point.



Trim plastic end of mount is required to fit bracket.

## Step 15

Refit grille into grille clips.

Bolt top edge in place using original bolts.

**Note:**

Re-attach Radar in badge if it is included on your vehicle



## Step 16

Remove fog lights from original bumper.

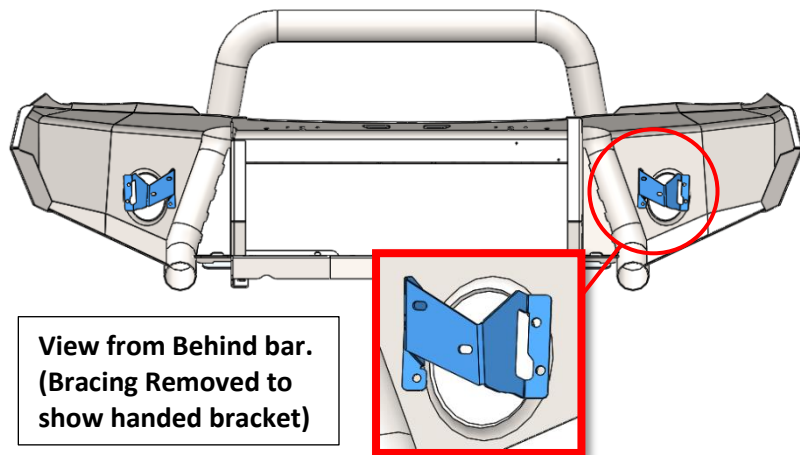
Bolt into fog light brackets shown using M6 bolt, washers and flange nut.

Bolt into bar using additional M6 bolts, washers and flange nuts.

Adjust using the lower original adjustment not until approximately horizontal.

Adjust to light to the centre of aperture in bar then tighten.

Torque bolts.



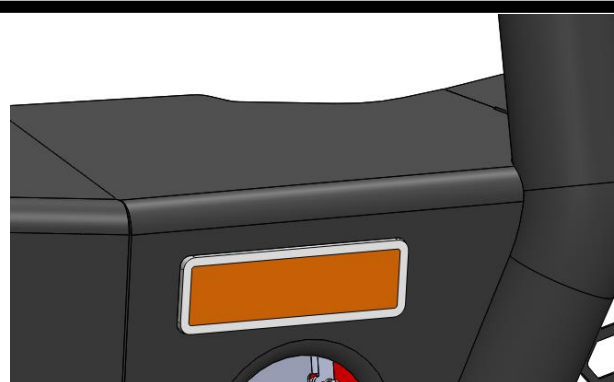
## Step 17

**Triple hoop only**

Fit indicators into Uneek bar using M5 nuts.

Cut indicator cable in half.

Splice/solder the free end of the cable into the vehicle wiring.



Fit male/female spade connectors to enable cable to be reconnected once bar is fitted.

Note: For Vehicles used in harsh environments sealed connectors recommended.

## Step 18

Fit 4x cage nuts into each wing.



## Step 19

Fit chassis braces to the outside each side of chassis as shown.

Use **M12 fine thread bolt and washer** into rear captive nut.

Use **M12 Course thread bolts and washers** into the supplied captive nut plate which is slid inside the chassis.

DO NOT TIGHTEN.



## Step 20

Fit red chassis mounts to each chassis end.

Flanges on each chassis mount point outwards.

Secure front face into captive nuts using bolts removed from OE Crash beam.

In positions with no captive nuts on front face use M10x20 bolts, washers and flange nuts.

In all other holes use **M12 course thread bolts**, flat washers and flange nuts.

### NOTE:

Bolts on bottom of chassis rail facing vertical must be fed through the bottom.



## Step 21

With help from an assistant.

Lift bar onto mounts.

Adjust bar left or right to achieve symmetrical fit.

Torque mount to chassis bolts.



## Step 22

Adjust bar for best fit on vehicle.

Aim for approximately:

20mm between guards and quarter panels and 10mm gap under the grille.

Wing rear edge should line up with wheel arch.

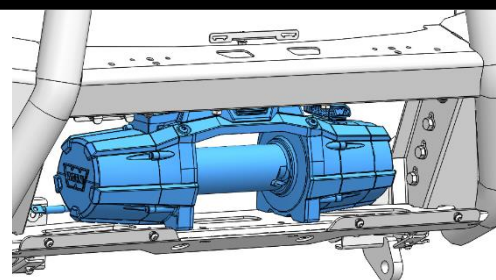


## Step 23

Fit winch if required.

This bar suits most standard body low mount winches.

Plasma rope winches and hawse fairleads recommended. If fitting roller fairlead number plate flip will need spacing forward.



Winch mounts feet down and is installed through the front of the bar.

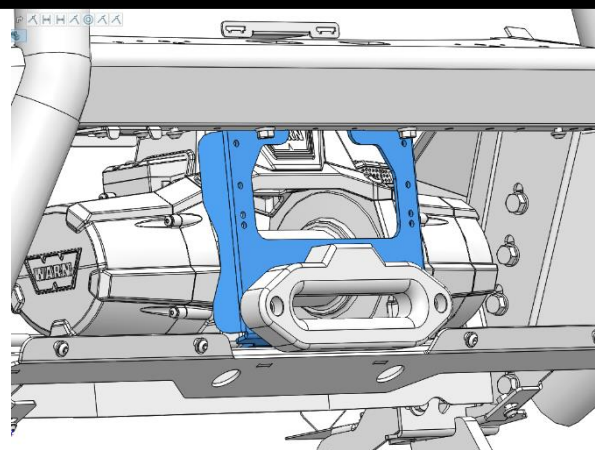
Control boxes mount on top of winch using brackets supplied in the winch fitting kit.

Refer to winch fitting instructions for more information.

## Step 24

Fit winch fairlead onto fairlead cradle as shown. Using bolts from winch kit

Fit fairlead cradle into the bar using 4xM10 bolts, washers and nuts from bulbar kit.



## Step 25

Fit any driving lights or light bars required.

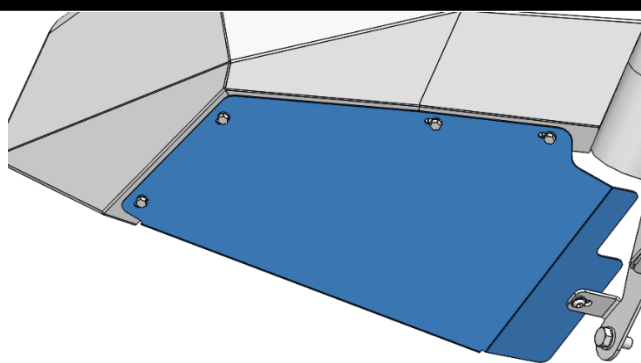
Note:

If vehicle has Toyota Safety Sense, the radar sensor is located inside the Toyota badge. Make sure not to obstruct the sensor.



## Step 26

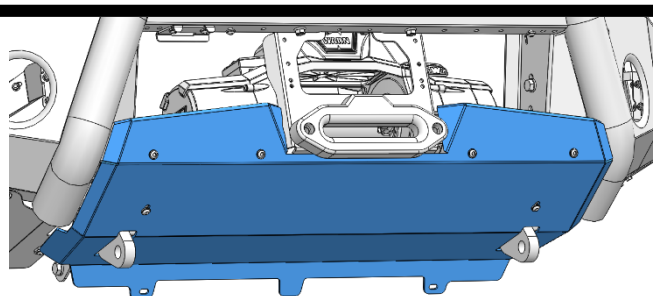
Fit wing under panels using M6 bolts, flat washers and cage nuts installed in the bar previously.



## Step 27

Fit centre bash plate using M8 dome head bolts, flat washers and flange nuts.

On lower holes to OE bash plate use original bolts.



## Step 28

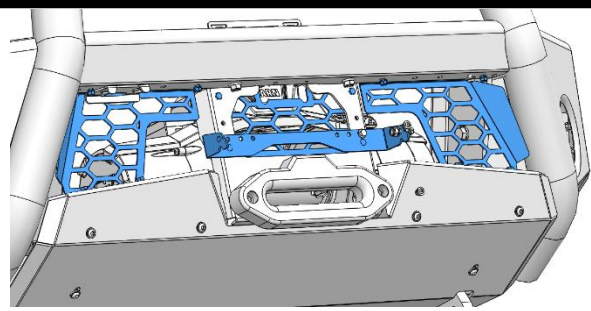
Fit mesh grilles using M6 bolts, cage nuts and washers.

### NOTE:

Install cage nuts facing outwards.

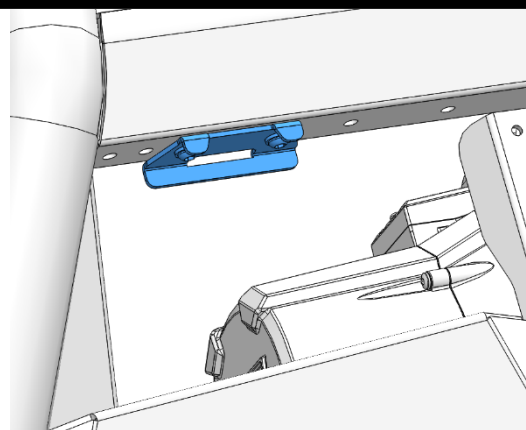
Mesh fits behind bash plate & top support.

Centre Mesh fits behind winch cradle.



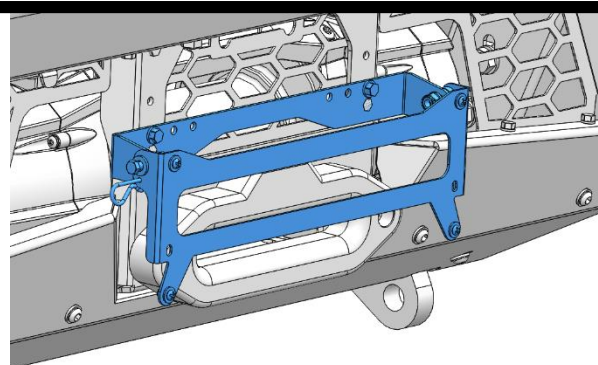
## Step 29

Fit Jack points using M8 button head bolts, black flat washers.

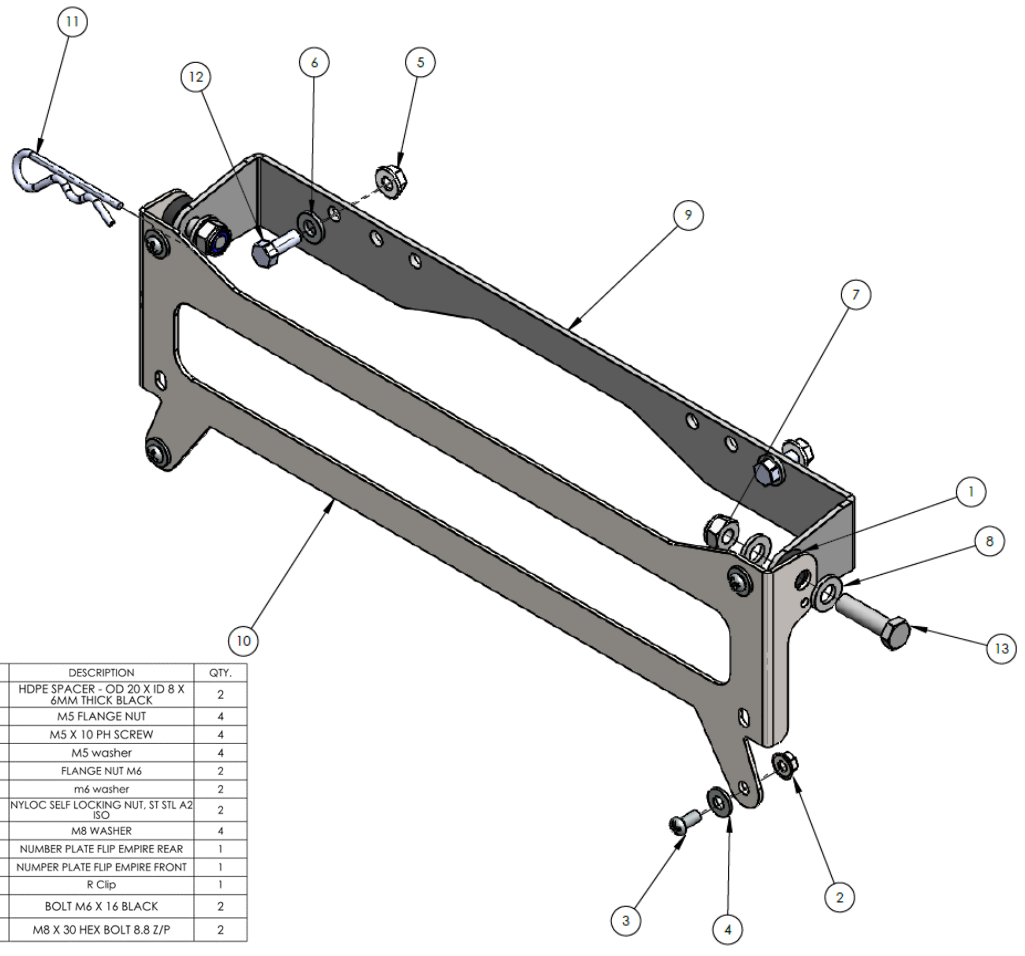


## Step 30

Fit flip brackets and number plate using M5 and M6 bolts, spacers, washers and nyloc nuts.







ITEM NO.	PART NUMBER	DESCRIPTION	QTY.
1	HDPE SPACER-BLACK	HDPE SPACER - OD 20 X ID 8 X 6MM THICK BLACK	2
2	M5 FN	M5 FLANGE NUT	4
3	M5X10 PSCREW	M5 X 10 PH SCREW	4
4	m5 washer	M5 washer	4
5	M6 FN	FLANGE NUT M6	2
6	M6 washer	m6 washer	2
7	M8 NYLOC	NYLOC SELF-LOCKING NUT, ST STL A2 ISO	2
8	M8 WASHER	M8 WASHER	4
9	NP-F-EP-1	NUMBER PLATE FLIP EMPIRE REAR	1
10	NP-F-EP-2	NUMBER PLATE FLIP EMPIRE FRONT	1
11	R clip- cotter pin	R Clip	1
12	M6X16 B2P	BOLT M6 X 16 BLACK	2
13	M8 X 30	M8 X 30 HEX BOLT 8.8 Z/P	2

# ***Finished Product***

---



Revised: 17/03/2020

***Australia's Best  
Off Road Products  
Created... Not Cloned***

20 Gateway Drive, Carrum Downs, VIC, 3201

1800 806 952

[www.uneek4x4.com.au](http://www.uneek4x4.com.au)

