

**UNEK4**  
AUSTRALIA  
OFF ROAD ACCESSORIES

**SKU: TH-FB-21EPX-ASM0**



***Fitting Instructions***  
***Toyota Hilux 2021 on***  
***Empire Bullbar***

***Australia's Best Off Road Products***  
***Created... Not Cloned***

# Contents

---

<b>WHY UNEEK</b>	<b>3</b>
<b>IMPORTANT INFORMATION</b>	<b>4</b>
<b>COMPONENTS AND PARTS</b>	<b>5</b>
<b>STEP 1</b>	<b>6</b>
<b>STEP 2</b>	<b>6</b>
<b>STEP 3</b>	<b>6</b>
<b>STEP 4</b>	<b>7</b>
<b>STEP 5</b>	<b>7</b>
<b>STEP 6</b>	<b>7</b>
<b>STEP 7</b>	<b>8</b>
<b>STEP 8</b>	<b>8</b>
<b>STEP 9</b>	<b>8</b>
<b>STEP 10</b>	<b>9</b>
<b>STEP 11</b>	<b>9</b>
<b>STEP 12</b>	<b>9</b>
<b>STEP 13</b>	<b>9</b>
<b>STEP 14</b>	<b>10</b>
<b>STEP 15</b>	<b>10</b>
<b>STEP 16</b>	<b>10</b>
<b>STEP 17</b>	<b>11</b>
<b>STEP 18</b>	<b>11</b>
<b>STEP 19</b>	<b>11</b>
<b>STEP 20</b>	<b>12</b>
<b>STEP 21</b>	<b>12</b>
<b>STEP 22</b>	<b>12</b>
<b>STEP 23</b>	<b>12</b>
<b>STEP 24</b>	<b>13</b>
<b>STEP 25</b>	<b>13</b>
<b>STEP 26</b>	<b>13</b>
<b>STEP 27</b>	<b>13</b>
<b>STEP 28</b>	<b>14</b>
<b>STEP 29</b>	<b>14</b>
<b>FINISHED PRODUCT</b>	<b>15</b>

# ***Why Uneek***

---

## ***Australian Designed and Built***

All our products are designed and manufactured right here in Australia, allowing us to have better lead times and better quality control than companies manufacturing overseas. By supporting us you're supporting to grow the Australian economy and our brand.

## ***Uneek Styling***

We do not design our bars to look the same across the vehicle range. We fully develop our own product to individually suit each vehicle. We take time in designing from scratch and then test all our bars to comply with all relevant ADRs and Australian Standards.

## ***Lightweight Through Smart Engineering***

Having a steel bar doesn't mean you have to add more weight than is required to the front of your vehicle. Our engineering practises ensure we have the right protection, designed the right way to ensure protection is at its maximum and weights at its minimum.

## ***Proven Off Road***

We take our products out and test them right here in the heart of our country in our Australian conditions so we know our products can withstand anything you throw at them.

## ***Increased Approach Angles***

Our bars are designed to give you the best advantage while off road, with increased approach angles means you can tackle those tough and steep angles better than you could with the original setup or other alternatives.

## ***Warranty***

Uneek 4x4 backs itself as Australia's leading steel bull bar manufacturer. This is why we provide you with the best steel bar warranty in Australia - 5 years.

# Important Information

---



## PLEASE READ BEFORE INSTALLATION.

- When installed in accordance with these instructions, the front protection bar does not affect the operation of the vehicles SRS airbags.
- This product must be installed exactly as per these instructions using only hardware supplied.
- Take a few moments to read instructions thoroughly before beginning work.
- In the event of damage to any bar component please contact Uneek 4x4 in regards to repair/replacement of components.
- Do not use this product for any vehicle make or model other than that specified on these instructions.
- Do not remove labels from this product.
- This product and its fixings must not be modified in any way unless stated in these fitting instructions.
- The installation of this product is recommended for trained personnel.
- These instructions are correct at time of publication. Uneek 4x4 cannot be held responsible for the impact of any changes subsequently made by the vehicle manufacturer.
- During installation it is the duty of the installer to check correct operation/clearances of all components.
- Supplied tow points are designed as tow points only. Use in a recovery operation will be at operator's risk.
- Installation time: 3-4 hours.
- Vehicle specific notes: A flip up license plate kit may be required. Optional Narva 90862 license plate light.



### EYE & EAR PROTECTION REQUIRED



### DRILLING REQUIRED



### TWO PERSON LIFT REQUIRED



### TORQUE SETTING



### CUTTING OR GRINDING REQUIRED

#### FASTENER TORQUE SETTINGS:

M6 – 9Nm (4lb ft)

M8 – 22Nm (16lb ft)

M10 – 44Nm (32lb ft)

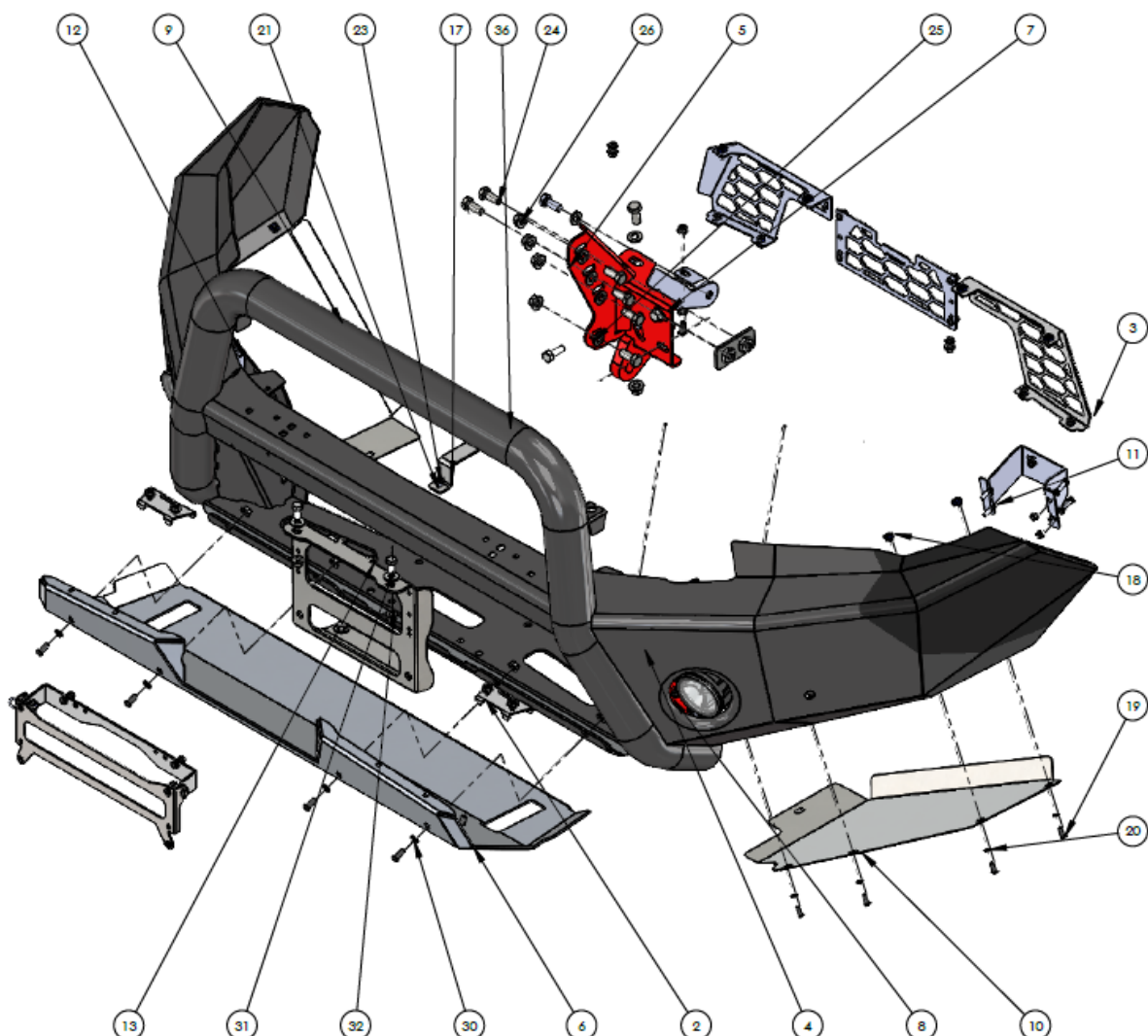
M12 – 77Nm (57lb ft)

BASIC TOOL KIT WITH SOCKETS, SPANNERS AND HEX KEYS, Power drill with 5mm and 9mm drill bit, rubber mallet, centre punch, hammer.

# Components and parts

## MAIN PARTS

ITEM NO.	PART NUMBER	DESCRIPTION	QTY.
1	TH-FB-21EP-ASM1	TOYOTA HILUX 2021 BAR URBAN	1
2	FBA-EP-JP-ASM0	EMPIRE BAR JACK POINT KIT	1
3	TH-FB-15EP-ASM4	HILUX MESH KIT	1
4	TH-FB-15EP-ASM2L	MOUNT BRACKET 2015 HILUX RHS	1
5	TH-FB-15EP-ASM2R	MOUNT BRACKET 2015 HILUX RHS	1
6	TH-FB-15EP-ASM3	HILUX 2015 LOWER PAN ALLOY SILVER	1
7	03-0394R	HILUX 2015 CHASSIS BRACKET	1
8	03-0394L	HILUX 2015 CHASSIS BRACKET	1
9	09-0160R	HILUX 2015 UNDER WING PANEL RHS	1
10	09-0160L	HILUX 2015 UNDER WING PANEL LHS	1
11	03-0398L	HILUX 2015 FOG LIGHT BRACKET	1
12	03-0398R	HILUX 2015 FOG LIGHT BRACKET RHS	1
13	06-0038	HILUX 2015 FAIRLEAD CRADLE	1
14	NP-F-EP-ASEM0	NUMBER PLATE FLIP EMPIRE BAR	1



## Step 1

- Test drive vehicle to ensure all driver assists are correctly working and to gauge effectiveness. Park on a flat level surface.
- Apply parking brake and lift bonnet.
- Unwrap bar and disconnect mounts. Discard bolts.
- Ensure these instructions are left with the vehicle owner and/or operator.



## Step 2

- Remove eight (8) push/pull clips from top radiator trim .
- Remove trim.
- Disconnect sonar unit behind badge in grille.



## Step 3

- Remove four (4) 10mm head bolts from top of grille.

NOTE: Grille clips on bottom of bumper are difficult to get to. By releasing side of grille, you can get to bolts in top of bumper, then remove grille with bumper.

- Unplug camera from back of badge if applicable to your vehicle.
- Pull forward on sides of grille to release clips at headlight level.





## Step 4

- In front of wheel arch, remove one (1) small push pull clip and one (1) screw clip from rear of bumper skin.



## Step 5

- From underside of bumper, remove three (3) 10mm head screws into guard liner (per side).
- In centre of bumper, remove three (3) 10mm head bolts from bumper to underbelly guards.
- Unclip bumper from inner guards and pull sides of bumper away from vehicle to unclip from guards.
- Disconnect Bumper lights and sensors (if fitted).



## Step 6

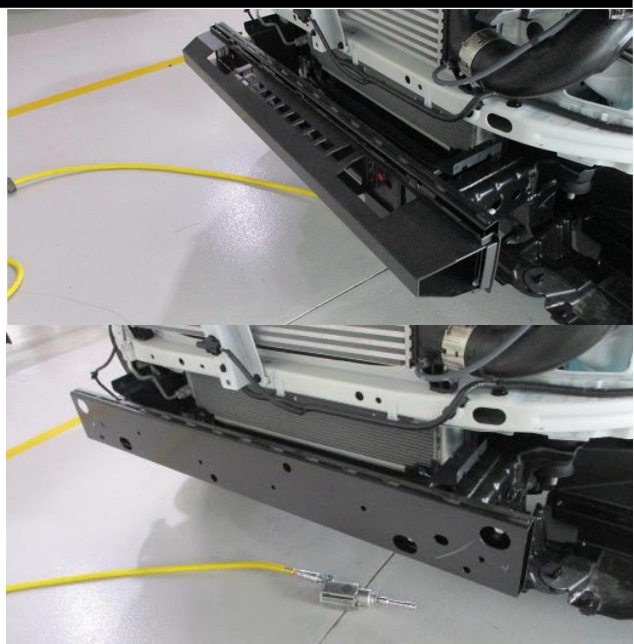
- From behind grille, remove three (3) 10mm head bolts.
- Pull bumper forward from under headlights to remove.



---

## Step 7

- With a firm tug, remove plastic from front of bumper support.
- Remove bumper support, four (4) 14mm head bolts. Retain these bolts.



---

## Step 8

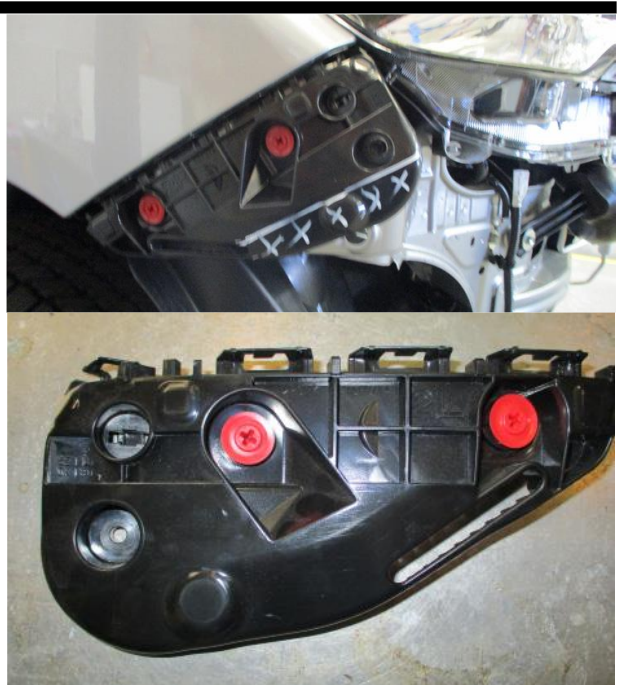
- Remove plastic trim from front of bash plate.



---

## Step 9

- Remove bumper retainers from guards per/side.
- One screw and two red push/pull clips.





## Step 10

- Mask off headlight and guard edge that could be seen between bar edge and body and paint black.



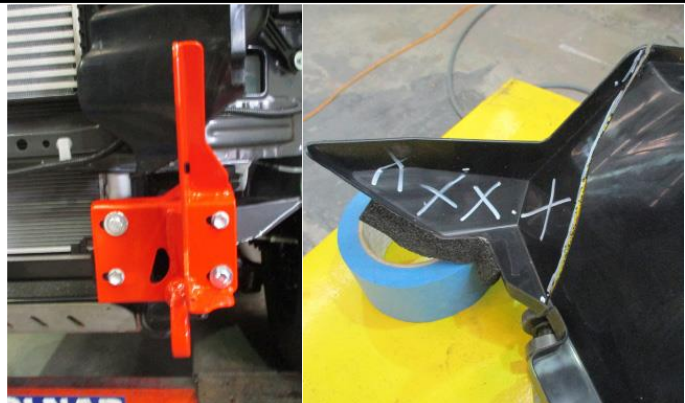
## Step 11

- If fitting winch, remove temperature sensor from bonnet lock support and relocate to left hand side of radiator support.
- Zip tie is required.



## Step 12

- Hold chassis mount into position.
- Mark and trim air dam to fit around mount.



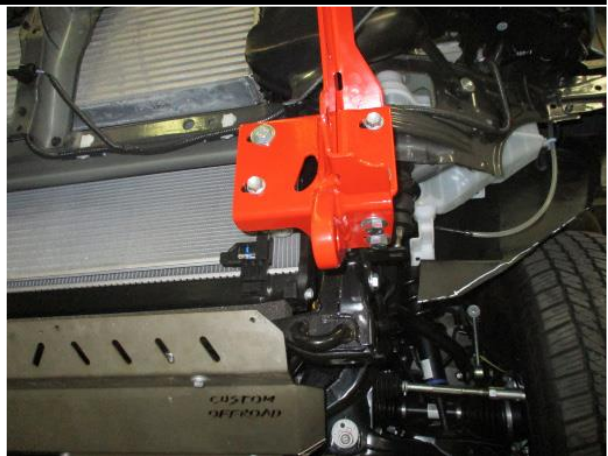
## Step 13

- Fit chassis brace to the outside each side of chassis as shown.
- Use M12 fine thread and washer into rear captive nut.
- Use M12 cores thread bolt and washers into flange nut.
- Do not tighten at this stage.



## Step 14

- Fit red chassis mount to each chassis rail end.
- Flange to the outside, fix with original bolts into captive nuts on front plate.
- Use M10 bolts, flat washers and flange nuts in other front holes.
- In all other holes use M12 course thread bolts, flat washers and flange nuts.
- Centralize mounts and tighten all bolts.



## Step 15

- Mark and cut grille as shown.



## Step 16

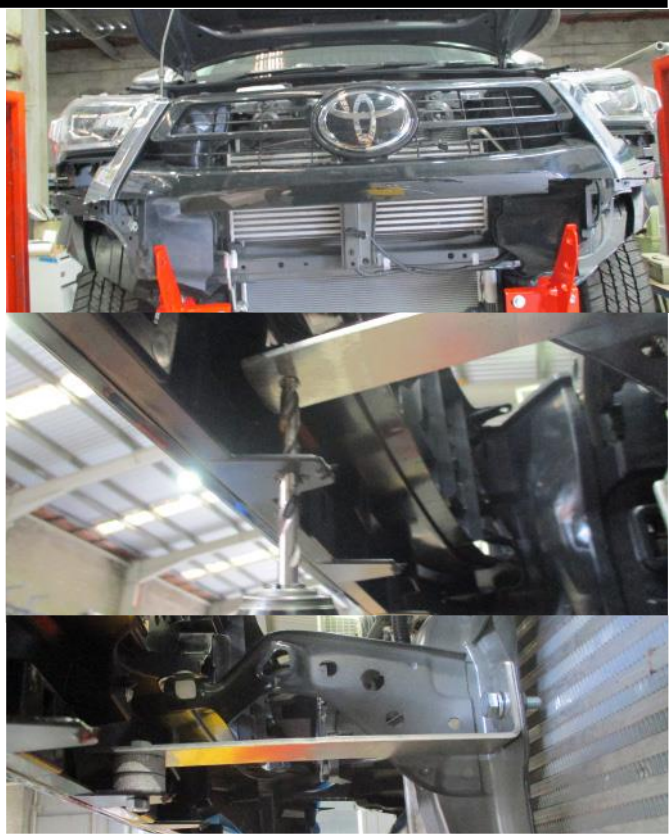
- Fix grille brace onto bonnet lock support with M8 x 16 bolt and spring washer into captive nut.





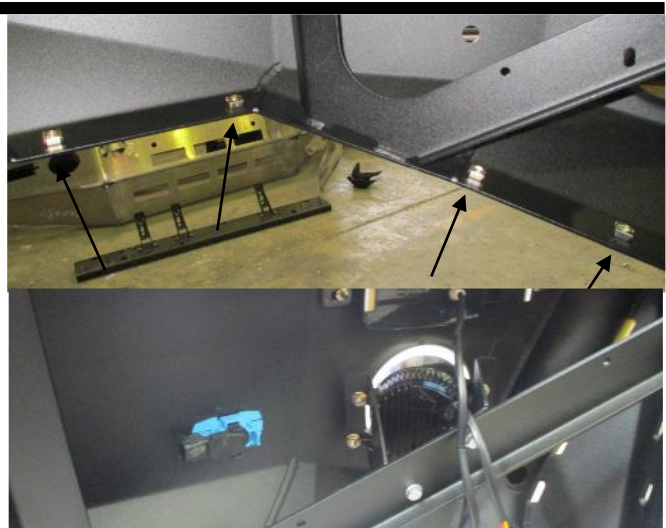
## Step 17

- Refit grille to vehicle using original equipment.
- Using grille brace as a guide drill a 6mm hole into center lug and fix with M6 hardware.



## Step 18

- Fit cage nuts into each wing of bar.
- Remove wiring, sensors and housing from bumper and relocate in back of protection bar and glue with Loctite 454 supplied.



## Step 19

- Fit indicators, fog lights.
- Fit spotlights or light bar if required.
- Sonar is behind grille badge (DO NOT OBSTRUCT).



---

## Step 20

- With help from an assistant.
- Lift bar onto mounts.
- Adjust bar left or right to achieve symmetrical fit.
- Torque mount to chassis bolts.

---

## Step 21

- Adjust bar for best fit on vehicle.
- Aim for approximately 20mm between bar end and guard, 10mm gap under headlights.
- Wing rear edge should line up with wheel arch.

---

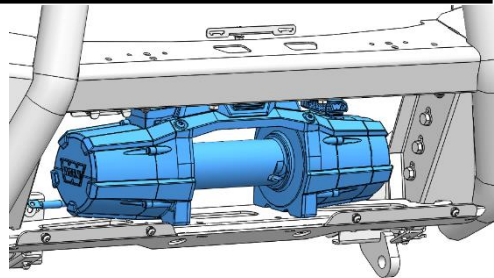
## Step 22

- Splice wiring into vehicle wiring harness and plug in sensors.

---

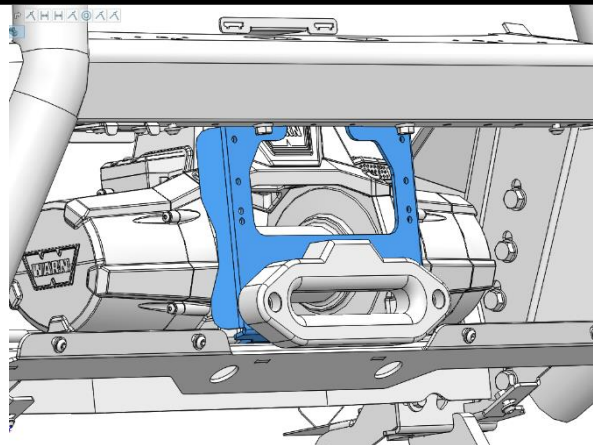
## Step 23

- Fit winch if required.
- This bar suits most standard body low mount winches.
- Plasma rope winches and hawse fairleads recommended. If fitting roller fairlead number plate flip will need spacing forward.
- Winch mounts feet down and is installed through the front of the bar.
- Control boxes mount on top of winch using brackets supplied in the winch fitting kit.
- Refer to winch fitting instructions for more information.



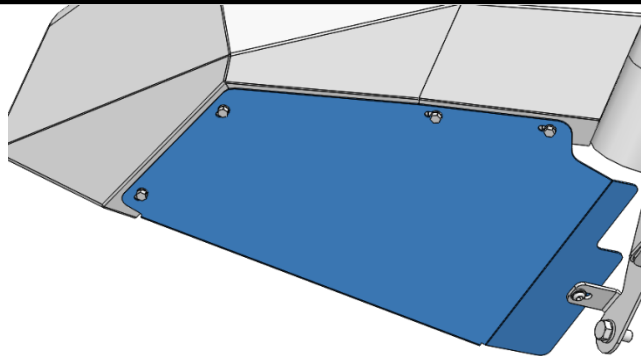
## Step 24

- Fit winch fairlead onto fairlead cradle as shown. Using bolts from winch kit
- Fit fairlead cradle into the bar using 4xM10 bolts, washers and nuts from bulbar kit.



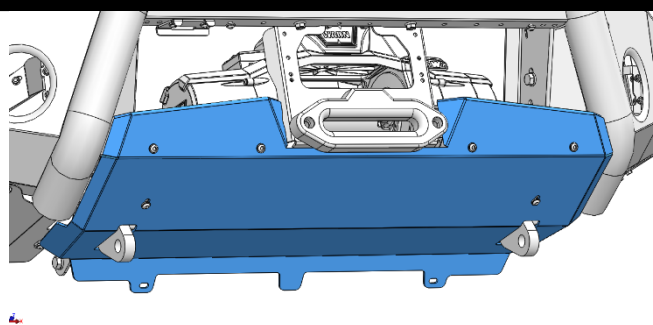
## Step 25

- Fit wing under panels using M6 bolts, flat washers and cage nuts installed in the bar previously.
- Using the outer panel as a guide, mark along the wheel arch guard and cut and tuck behind the outer panel.



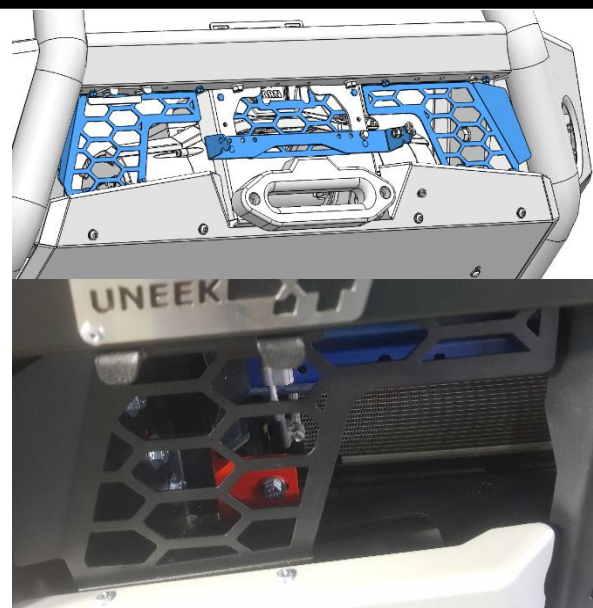
## Step 26

- Fit centre bash plate using M8 dome head bolts, flat washers and flange nuts.
- On lower holes to OE bash plate use original bolts.



## Step 27

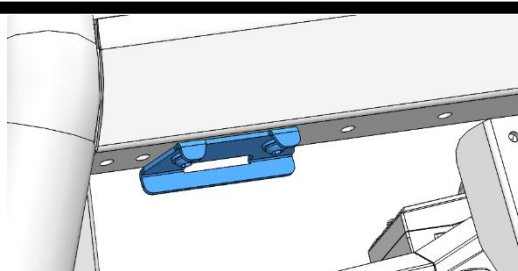
- Fit mesh grilles using M6 bolts, cage nuts and washers.
  - NOTE: Install cage nuts facing outwards. Mesh fits behind bash plate & top support.
- Centre Mesh fits behind winch cradle.





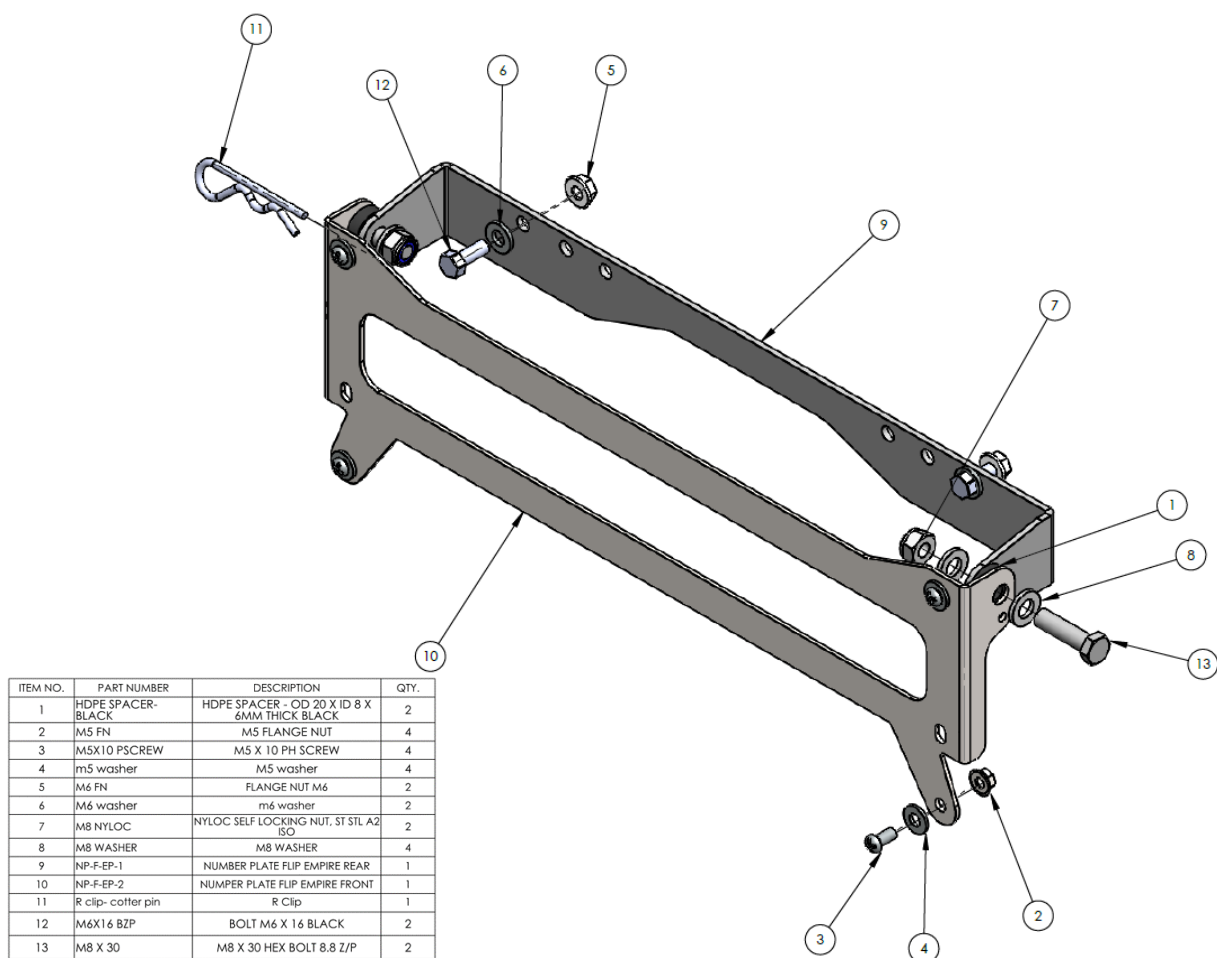
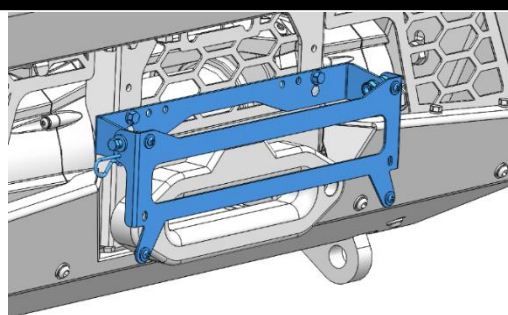
## Step 28

- Fit Jack points using M8 button head bolts, black flat washers.



## Step 29

- Fit flip brackets and number plate using M5 and M6 bolts, spacers, washers and nyloc nuts.



# ***Finished Product***

---



Revised: 21/05/2021

***Australia's Best  
Off Road Products  
Created... Not Cloned***

20 Gateway Drive, Carrum Downs, VIC, 3201

1300 806 952

[www.uneek4x4.com.au](http://www.uneek4x4.com.au)

