



SKU: JK-DB-P-ASM0



Fitting Instructions

Jeep JK Wrangler 2007 on Dual Battery Tray

***Australia's Best Off Road Products
Created... Not Cloned***

Contents

WHY UNEEK	3
IMPORTANT INFORMATION	4
COMPONENTS AND PARTS	5
STEP 1	6
STEP 2	6
STEP 3	6
STEP 4	6
STEP 5	7
STEP 6	7
STEP 7	7
STEP 8	7
STEP 9	8
STEP 10	8
STEP 11	8
STEP 12	9
STEP 13	9
STEP 14	9
STEP 15	9
STEP 16	10
STEP 17	10
STEP 18	10
STEP 19	10
STEP 20	11
FINISHED PRODUCT	12

Why Uneek

Australian Designed and Built

All our products are designed and manufactured right here in Australia, allowing us to have better lead times and better quality control than companies manufacturing overseas. By supporting us you're supporting to grow the Australian economy and our brand.

Uneek Styling

We do not design our bars to look the same across the vehicle range. We fully develop our own product to individually suit each vehicle. We take time in designing from scratch and then test all our bars to comply with all relevant ADRs and Australian Standards.

Lightweight Through Smart Engineering

Having a steel bar doesn't mean you have to add more weight than is required to the front of your vehicle. Our engineering practises ensure we have the right protection, designed the right way to ensure protection is at its maximum and weights at its minimum.

Proven Off Road

We take our products out and test them right here in the heart of our country in our Australian conditions so we know our products can withstand anything you throw at them.

Increased Approach Angles

Our bars are designed to give you the best advantage while off road, with increased approach angles means you can tackle those tough and steep angles better than you could with the original setup or other alternatives.

Warranty

Uneek 4x4 back itself as Australia's leading steel bull bar manufacturer. This is why we provide you with the best steel bar warranty in Australia - 5 years.

Important Information



PLEASE READ BEFORE INSTALLATION.

- This product must be installed exactly as per these instructions using only hardware supplied.
- This product or its fixings must not be modified in any way.
- These instructions are correct as at the publication date. Uneek 4x4 Pty Ltd cannot be held responsible for the impact of any changes subsequently made by the vehicle manufacturer.
- During installation, it is the duty of the installer to check correct operation/ clearances of all components
- You will be removing and cutting the factory plastic battery tray
- **Only install batteries that can be mounted on their side.** These batteries must not exceed the following dimensions: 275mm x 175mm x 175mm
- Installation time is estimated at 3 HOURS for a mechanically minded person.



EYE & EAR PROTECTION REQUIRED



DRILLING REQUIRED



TWO PERSON LIFT REQUIRED



TORQUE SETTING



CUTTING OR GRINDING REQUIRED

FASTENER TORQUE SETTINGS:

M6 – 9Nm (4lb ft)

M8 – 22Nm (16lb ft)

M10 – 44Nm (32lb ft)

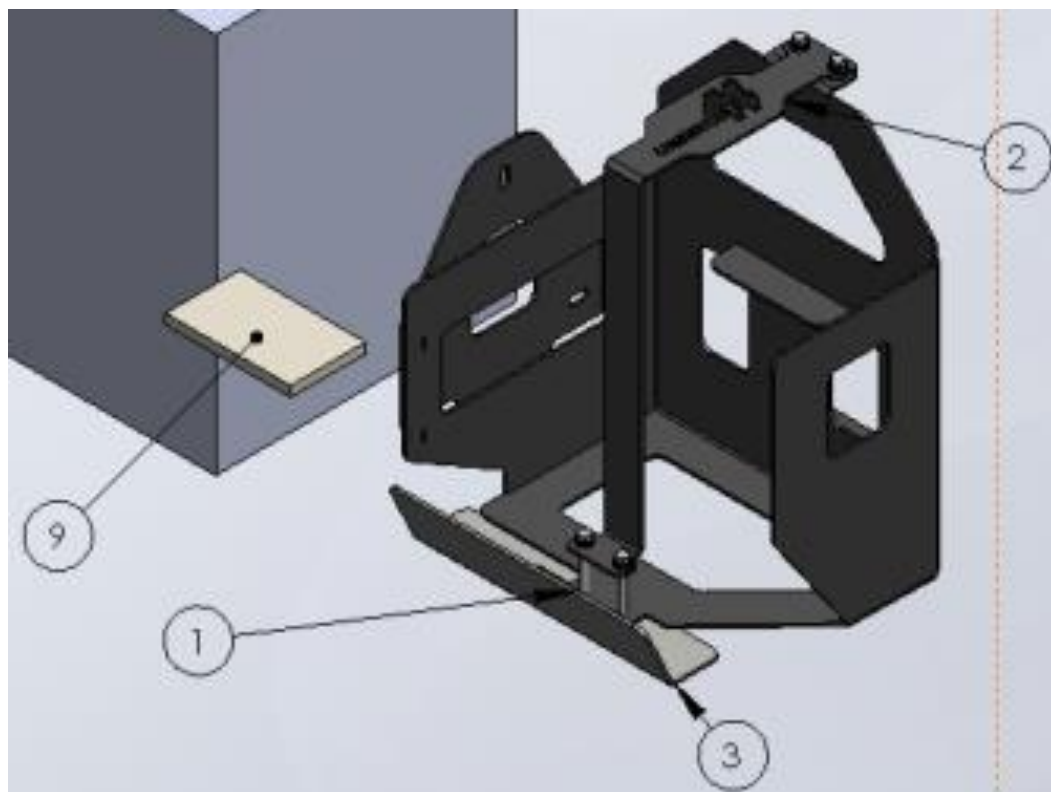
M12 – 77Nm (57lb ft)

TOOLS REQUIRED:

Hand spanners, socket set, hacksaw or angle grinder and pliers.

Components and parts

ITEM NO.	PART NUMBER	DESCRIPTION	QTY.
1	JK-DB-P-ASM1	JK DUAL BATTERY TRAY PETROL	1
2	JK-DB-P-6	CLAMP	1
3	JK-DB-P-7	HEAT SHIELD	1
4	m6 nut	M6 nut z/p	4
5	m6 washer	m6 washer	6
6	M6 x 20	M6 X 20 HEX BOLT Z/P	2
7	M6 x 60	M6 X 60 HEX BOLT Z/P	2
8	M6 SPRING WASHER	M6 SPRING WASHER z/p	4
9	POLY FOAM RIGID 5 X 3	FOAM 5 X 3	1



Step 1

Unpack and make sure all items are accounted for as per contents above.

Please note this entire install is easier to accomplish with the inner fender plastic lining and outer flare removed. This is often called the inner flare splash guard. We will not be going through instructions on removing that, and install is still possible with these items in place.



Step 2

Remove the old battery tray.

Generally, there is a small plastic clamp at the base of the battery that must be undone to release the battery.



Step 3

The picture to the right shows the battery removed, and 2 of the 3 firewall mounting nuts removed.

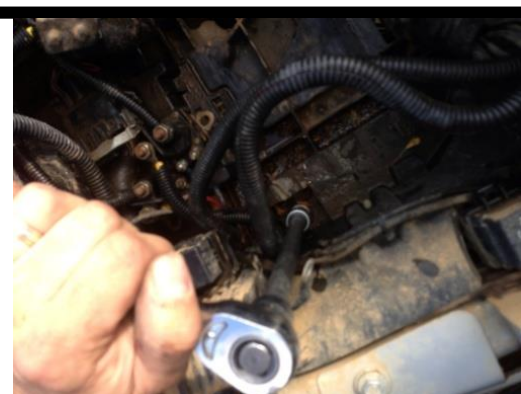
Remove all 3 mounting nuts and retain for later use.



Step 4

Remove the bolt at the bottom of the battery box as shown to the right.

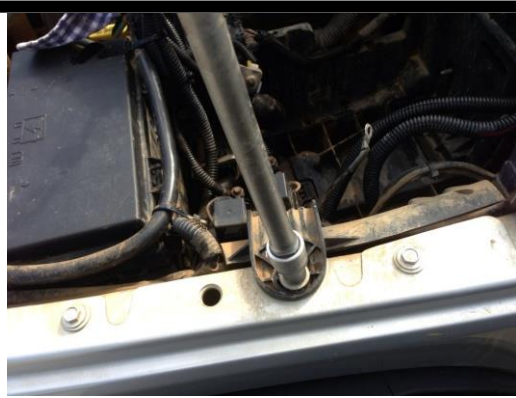
Retain this bolt it will be used again.



Step 5

Remove the bolt on the bonnet seat edge as shown in the right.

This bolt will not be used again.



Step 6

Remove the Power control box by unclipping each wiring loom and lifting it out.



Step 7

Next move on to the front of battery box by removing the bolt shown to the right.



Step 8

Drain the washer fluid bottle by unplugging it from underneath.



Step 9

Remove the bolt at the bottom of the washer bottle. This is accessed from the top.



Step 10

Under all the wires from the Power control box are 4 more bolts that need to be removed.

Once these are removed the plastic battery box should be able to be lifted out.



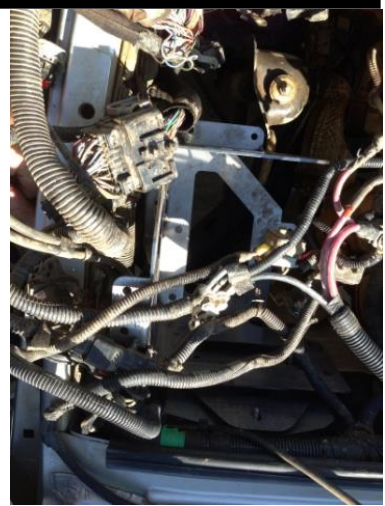
Step 11

Clear out the plastic battery box and move as many wires out of the way as possible to put the new steel battery box in.



Step 12

Put in the new battery box, lining up the fire wall bolts with the corresponding part slots.



Step 13

Ensure the side mounting bracket on the new battery box sits above and lines up with the chassis bracket as shown to the right.

Insert removed bolt and do up hand tight.



Step 14

Torque up each firewall nut.



Step 15

Torque up the side bolt.



Step 16

Fit both batteries, ensuring the foam block is between them to protect them from vibration and each other.



Step 17

Install the battery clamp and heat shield with supplied hardware.

The heat shield goes under the new battery box so the nuts can hold it in place.

Tension these nuts until both batteries feel secure and will not move. The bottom of the clamp should never get close enough to touch the steel battery box. Long bolts are supplied to enable you to start them.



Step 18

The picture to the right shows where to cut the battery box. It's a rough cut and as long as you leave the 4 holes for the Power control box you'll be fine.



Step 19

Here is a picture showing the battery box cut, and what will be going back in the jeep.

Install this front section as a reverse of these instructions. Don't forget to put the hose back on the bottom of the windshield washer reservoir.



Step 20

Wire up the batteries and you're done.



Finished Product



Revised: 27/08/2019

***Australia's Best
Off Road Products
Created... Not Cloned***

20 Gateway Drive, Carrum Downs, VIC, 3201

1800 806 952

www.uneek4x4.com.au

