

**UNEK4**  
AUSTRALIA  
OFF ROAD ACCESSORIES

**SKU: JK-RR-X-ASM0**



## ***Fitting Instructions***

***Jeep JK Wrangler 2007-2016***

***Roof Rack***

***Australia's Best Off Road Products  
Created... Not Cloned***

# Contents

---

<b>WHY UNEEK</b>	<b>3</b>
<b>IMPORTANT INFORMATION</b>	<b>4</b>
<b>COMPONENTS AND PARTS</b>	<b>5</b>
<b>COMPONENTS AND PARTS</b>	<b>6</b>
<b>STEP 1</b>	<b>7</b>
<b>STEP 2</b>	<b>7</b>
<b>STEP 3</b>	<b>7</b>
<b>STEP 4</b>	<b>7</b>
<b>STEP 5</b>	<b>8</b>
<b>STEP 6</b>	<b>8</b>
<b>STEP 7</b>	<b>8</b>
<b>STEP 8</b>	<b>8</b>
<b>STEP 9</b>	<b>9</b>
<b>STEP 10</b>	<b>9</b>
<b>STEP 11</b>	<b>9</b>
<b>STEP 12</b>	<b>10</b>
<b>STEP 13</b>	<b>10</b>
<b>STEP 14</b>	<b>10</b>
<b>STEP 15</b>	<b>10</b>
<b>STEP 16</b>	<b>11</b>
<b>STEP 17</b>	<b>11</b>
<b>STEP 18</b>	<b>11</b>
<b>STEP 19</b>	<b>11</b>
<b>STEP 20</b>	<b>12</b>
<b>STEP 21</b>	<b>12</b>
<b>STEP 22</b>	<b>12</b>
<b>STEP 23</b>	<b>12</b>
<b>STEP 24</b>	<b>13</b>
<b>STEP 25</b>	<b>13</b>
<b>STEP 26</b>	<b>14</b>
<b>STEP 26</b>	<b>14</b>
<b>STEP 28</b>	<b>13</b>
<b>STEP 29</b>	<b>13</b>
<b>FINISHED PRODUCT</b>	<b>15</b>

# ***Why Uneek***

---

## ***Australian Designed and Built***

All our products are designed and manufactured right here in Australia, allowing us to have better lead times and better quality control than companies manufacturing overseas. By supporting us you're supporting to grow the Australian economy and our brand.

## ***Uneek Styling***

We do not design our bars to look the same across the vehicle range. We fully develop our own product to individually suit each vehicle. We take time in designing from scratch and then test all our bars to comply with all relevant ADRs and Australian Standards.

## ***Lightweight Through Smart Engineering***

Having a steel bar doesn't mean you have to add more weight than is required to the front of your vehicle. Our engineering practises ensure we have the right protection, designed the right way to ensure protection is at its maximum and weights at its minimum.

## ***Proven Off Road***

We take our products out and test them right here in the heart of our country in our Australian conditions so we know our products can withstand anything you throw at them.

## ***Increased Approach Angles***

Our bars are designed to give you the best advantage while off road, with increased approach angles means you can tackle those tough and steep angles better than you could with the original setup or other alternatives.

## ***Warranty***

Uneek 4x4 back itself as Australia's leading steel bull bar manufacturer. This is why we provide you with the best steel bar warranty in Australia - 5 years.

# Important Information

---



## PLEASE READ BEFORE INSTALLATION.

- This product must be installed exactly as per these instructions using only hardware supplied.
- Take a few moments to read instructions thoroughly before beginning work.
- In the event of damage to any components please contact Uneek 4x4 in regards to repair/replacement of components.
- Do not use this product for any vehicle make or model other than that specified on these instructions.
- This product and its fixings must not be modified in any way unless stated in these fitting instructions.
- The installation of this product is recommended for trained personnel.
- These instructions are correct at time of publication. Uneek 4x4 cannot be held responsible for the impact of any changes subsequently made by the vehicle manufacturer.
- During installation it is the duty of the installer to check correct operation/clearances of all components.
- Installation time: 1.5-2.5 hours
- Vehicle specific notes: Suits Hard top and soft top wranglers 2 door and 4 door
- This roof rack is designed to move with the vehicle seeing it is body mounted in the front and chassis mounted in the rear. Sway in the roof rack is OK.
- Never pivot the roof rack back while loaded with gear.
- Always use a spring washer under the hand knobs to secure the rack in place, if traveling over heavy corrugated roads replace hand knob with M12 x 30 hex bolt and use supplied washers and torque up to spec.
- This roof rack is rated to 150kg dynamic (driving) and 300 kg static (sitting still) when mounted to a steel bumper.



### EYE & EAR PROTECTION REQUIRED



### DRILLING REQUIRED



### TWO PERSON LIFT REQUIRED



### TORQUE SETTING



### CUTTING OR GRINDING REQUIRED

#### FASTENER TORQUE SETTINGS:

M6 – 9Nm (4lb ft)

M8 – 22Nm (16lb ft)

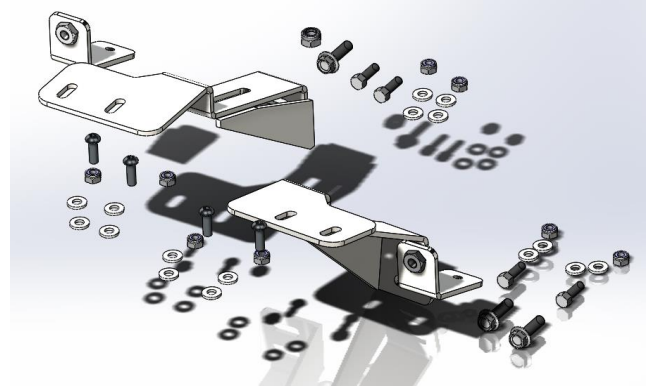
M10 – 44Nm (32lb ft)

M12 – 77Nm (57lb ft)

**TOOLS REQUIRED:** Hand spanner set, socket set, rubber mallet, Allen keys, power drill, 10.5mm drill bit (if fitting to steel bumper), torque Driver

# Components and parts

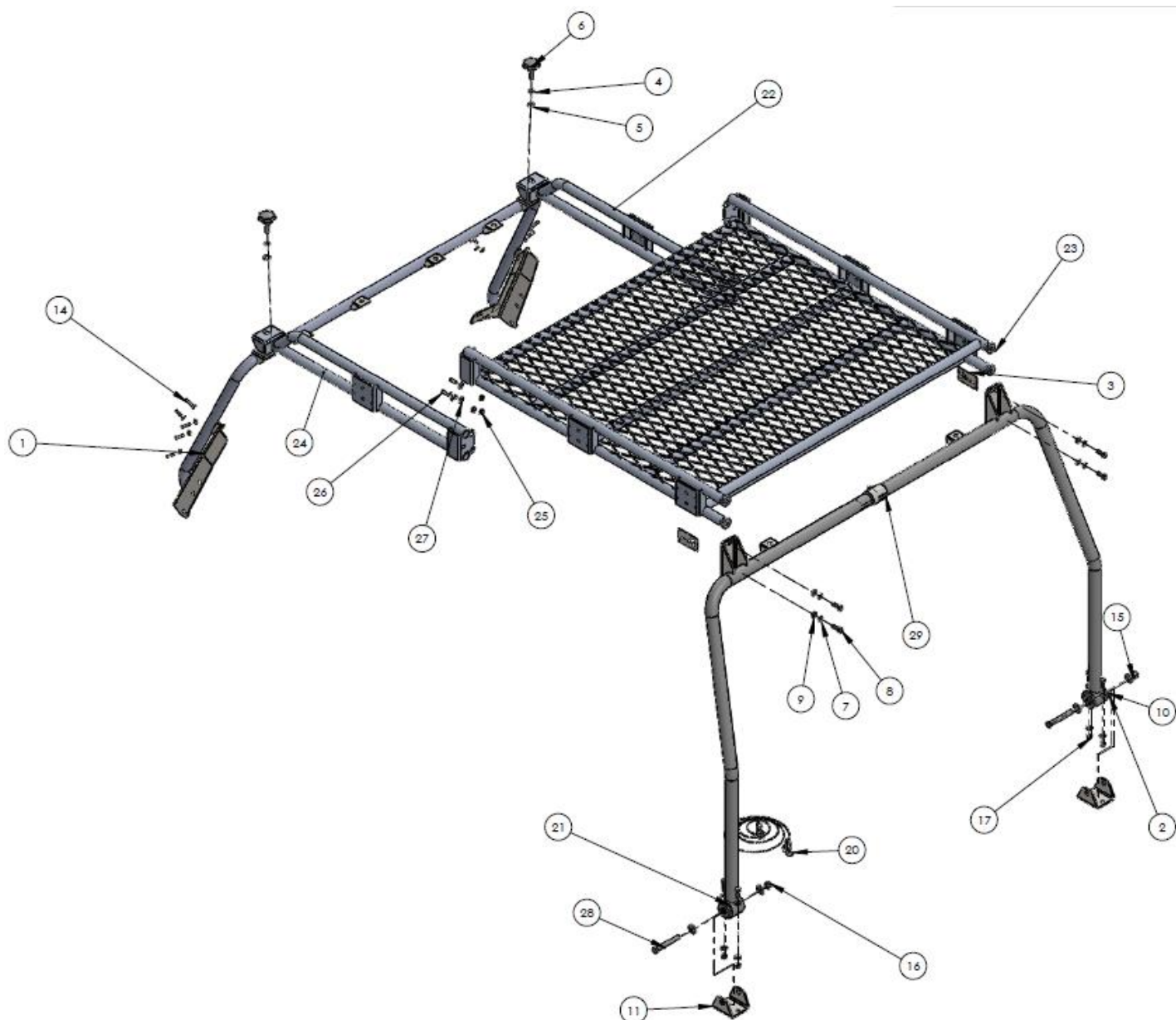
ITEM NO	PART NUMBER	DESCRIPTION	QTY
1	JK-RR-105R	CHASSIS MOUNT RH	1
2	JK-RR-105L	CHASSIS MOUNT LH	1
3	M10X30 BHCS	M10X30 BUTTON HEAD CAP SCREW Z/P	4
4	JK-RR-27	CHASSIS BRACKET SUPPORT	2
5	M12-1.75X40	M12X40-8.8 HEX BOLT Z/P	2
6	M10-1.5X30	M10X30-8.8 HEX BOLT Z/P	4
7	M19 HD WASHER	M10 HD WASHER Z/P	16
8	M10 NYLOC	NYLOC SELF LOCKING NUT	8



ITEM NO.	PART NUMBER	DESCRIPTION	QTY.
1	JK-RR-ASM1	Front hoop	1
2	JK-RB-ASM2R	REAR HOOP 2 PIECE	1
3	JK-S-10	LOGO PLATE	2
4	M12 SPRING WASHER	M12 SPRING WASHER	2
5	M12 HD WASHER	M12 HD WASHER	2
6	M12 Knob	M12 Knob	2
7	M10 SPRING WASHER	M10 SPRING WASHER	4
8	M10-1.5 x 30	M10x30 HEX BOLT Z/P 8.8	8
9	M10 HD WASHER	M10 HD WASHER Z/P	13
10	SPF2670k	Super Pro 4x4 Plyurethane Bush	2
11	JK-RR-15	REVOLVER LOWER	2
12	JK-RR-30	NEOPRENE BACKING LH	1
13	JK-RR-30R	NEOPRENE CUT OUT	1
14	M8 x 35 HEX BOLT SS	M8 X35 HEX SS	10
15	M14 WASHER	M14 WASHER Z/P	4
16	M14 Nyloc nut	M14 NYLOC NUT	2
17	M10 NYLOC	NYLOC SELF LOCKING NUT	5
18	SHIPPER 2210 X 1350 X 250	JK ROOF RACK UNLIMITED SHIPPER	1
19	M8 WASHER SS	M8 WASHER SS	10
20	JK-RR-ASM5-S	LWB stainless wire restrictor 3700mm	1
21	JK-RR-ASM2L	REAR HOOP 2 PIECE	1
22	JK-RR-UF-ASM3R	FRONT ROOF RACK SECITON	1
23	JK-RR-UB-ASM3	ROOF RACK REAR	1
24	JK-RR-UF-ASM3L	FRONT ROOF RACK SECTION	1
25	M8 FN	FLANGE NUT M8	6
26	M8X25	BOLT M8 X 25	6
27	M8 FLAT WASHER	M8 FLAT WASHER	6
28	M14 x 110	M14 X 110 HEX BOLT, 8.8 Z/P	2
29	M10X70 BHCS	M10X70 BUTTON HEAD CAP SCREW Z/P	1

# ***Components and parts***

---



## Step 1

Open up the supplied suspension bushes and apply grease to lubricate the inside of the Rear hoop bosses.



## Step 2

Using a rubber mallet tap in the bush and crush tube.



## Step 3

Repeat for other side.



## Step 4

Steps 4 to 12 involve using optional chassis brackets to install the roof rack.  
Steps 26 to 27 are for mounting to a suitable steel rear bumper bar.  
Remove the factory rear bumper bar by unplugging the wiring harness and removing 2 M10 bolts per side and 2 on the rear.  
Retain all these bolts.



---

## Step 5

Remove the two steel side brackets from your plastic bumper.



---

## Step 6

Fit Chassis mount brackets as shown using factory M10 bolts.

The bumper brackets should also be installed but are shown missing here to get a better view of the new chassis bracket. Step 10 shows the bumper brackets in place.



---

## Step 7

Fit under support plate as shown to the right. Secure support plate with 2 M10 x 30 bolts with washers on both sides and a nyloc nut on the bottom.

Then with an M12 x 40 bolt and nut screw in and touch the body. Put a dab of grease on the end of the bolt. Use the extra nut to lock the bolt up against the support plate.



---

## Step 8

Place the revolver brackets on top of the chassis bracket and loosely do up the bolts facing up as shown.

Do this for both sides.



## **Step 9**

The picture to the right shows the ideal spot for the chassis brackets, which is 40mm from the edge of the body and 40mm from the flare at that point from the body.



## **Step 10**

Fit the rear hoop on to the revolvers and adjust revolver positions as required.  
You may need to test fit the upper roof rack to confirm these are in the correct plate.  
Ensure both sides are equal distance away from the body and from the flare.  
Torque up M10 bolts on revolver brackets.  
Do this for both sides.



## **Step 11**

This image shows the chassis brackets with the bumper support brackets over the top.



---

## Step 12

Slide factory bumper in to place.



---

## Step 13

Torque up all bumper bar bolts.



---

## Step 14

To fit the front hoop, you will need to remove 5 bolts from each A pillar using a torque driver.

Remove all bolts except the lowest one.



---

## Step 15

With the help of a friend lift the front hoop in to place.

If you are alone, lay down some towels on your bonnet and remove your roof or freedom panels then lower the front hoop down from above.

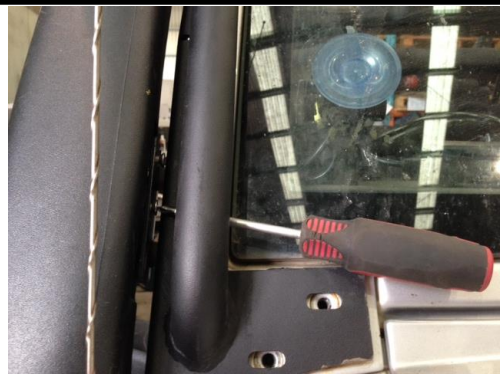
Use Stainless steel M8 bolts and torque up all 10.

There should be a gap between the top of the bracket and the A pillar, this is to guide/hide wires down for roof lights.



## Step 16

If you have a Safari snorkel you will need to carefully use a screwdriver or driver bit to re attached the bolts/screws through the gap of the tube and the windscreen.



## Step 17

Lay out the 3 pieces to the roof rack platform.



## Step 18

Using M8 x 25 bolts with washers and flange nuts put the top roof rack together and torque up the bolts.



## Step 19

Next is to place the roof rack on top of the vehicle.

If your soft top is fitted pull it down as to not damage it.

Placing the roof rack on to the hard top is ok.



## Step 20

Attach the front of the roof rack to the front hoop with 2 x M12 hand knobs. Make sure you use a spring washer and flat washer as well.

Position the roof rack slot in the middle of the welded nut.



## Step 21

Insert the two rear hoop ends together.



## Step 22

Fit the rear hoop on to the chassis brackets with M14 bolt washer on each end and an M14 nyloc nut.



## Step 23

Lift the rear hoop up to the roof rack and fit 4 x M10 x 30 bolts with spring washers and flat washers. Torque up each one.

The easiest way is to start the top bolt with only 2 or 3 turns then install and seat the lower bolt before torqueing the top.



## Step 24

\*If fitting to steel bumper\*

Line up the lower legs of the rear hoop to be vertical then mark the mounting holes through the revolver bracket. Remove the rear hoop and drill 13mm holes for each spot (2 either side).



## Step 25

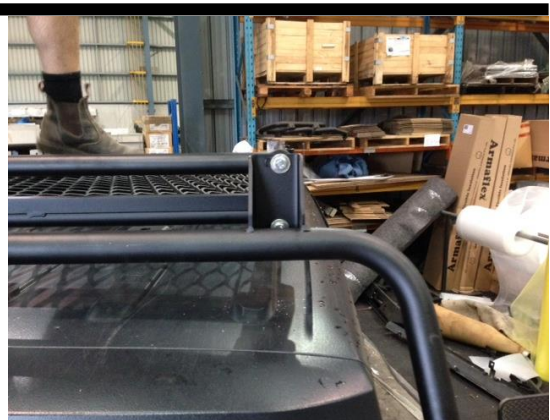
\*If fitting to steel bumper\*

Fit both revolvers with M10 hardware, then refit the rear hoop and you're finished.



## Step 26

Go over all bolts to ensure they are torqued up.



## Step 27

Drill through the spigot on the rear hoop joiner with a 10.5mm drill bit.



## Step 28

Fit M10 x 70 button head cap screw with nyloc nut and washer and torque up.



## Step 29

Pivot back the entire rack to ensure no binding or clearance issues.

Use supplied wire with loops on both ends to restrict how far the roof rack will pivot.

Attached one end to the end of the roof rack and the other to the front hoop.

Keep this wire in your glove box for later use, do not leave attached permanently.



# ***Finished Product***

---



Revised: 26/07/2019

***Australia's Best  
Off Road Products  
Created... Not Cloned***

20 Gateway Drive, Carrum Downs, VIC, 3201

1800 806 952

[www.uneek4x4.com.au](http://www.uneek4x4.com.au)

