

UNEK4
AUSTRALIA
OFF ROAD ACCESSORIES

SKU: JL-FB-T-ASM0



Fitting Instructions

***Jeep JL Wrangler 2018+
Jeep Gladiator 2020+
Touring Front Bar***

***Australia's Best Off Road Products
Created... Not Cloned***

Contents

WHY UNEEK	3
IMPORTANT INFORMATION	4
STEP 1	7
STEP 2	7
STEP 3	7
STEP 4	8
STEP 5	8
STEP 6	8
STEP 7	8
STEP 8	9
STEP 9	9
STEP 10	9
FINISHED PRODUCT	10

Why Uneek

Australian Designed and Built

All our products are designed and manufactured right here in Australia, allowing us to have better lead times and better quality control than companies manufacturing overseas. By supporting us you're supporting to grow the Australian economy and our brand.

Uneek Styling

We do not design our bars to look the same across the vehicle range. We fully develop our own product to individually suit each vehicle. We take time in designing from scratch and then test all our bars to comply with all relevant ADRs and Australian Standards.

Lightweight Through Smart Engineering

Having a steel bar doesn't mean you have to add more weight than is required to the front of your vehicle. Our engineering practises ensure we have the right protection, designed the right way to ensure protection is at its maximum and weights at its minimum.

Proven Off Road

We take our products out and test them right here in the heart of our country in our Australian conditions so we know our products can withstand anything you throw at them.

Increased Approach Angles

Our bars are designed to give you the best advantage while off road, with increased approach angles means you can tackle those tough and steep angles better than you could with the original setup or other alternatives.

Warranty

Uneek 4x4 back itself as Australia's leading steel bull bar manufacturer. This is why we provide you with the best steel bar warranty in Australia - 5 years.

Important Information



PLEASE READ BEFORE INSTALLATION.

- When installed in accordance with these instructions, the front protection bar does not affect operation of the SRS airbag.
- This product must be installed exactly as per these instructions using only hardware supplied.
- In the event of damage to any bull bar component, contact Uneek 4x4 Pty Ltd for options. Repairs or modifications to the impact absorption system must not be attempted.
- Do not use this product for any vehicle make or model, other than specified on these instructions.
- Do not remove labels from this product.
- This product or its fixings must not be modified in any way.
- The installation of this product is recommended by trained personnel.
- These instructions are correct as at the publication date. Uneek 4x4 Pty Ltd cannot be held responsible for the impact of any changes subsequently made by the vehicle manufacturer.
- During installation, it is the duty of the installer to check correct operation/ clearances of all components.
- Supplied tow points are designated as tow points only. Use these in a recovery at your own risk.
- Installation time is estimated at 1 hour including removal of factory bumper.

FASTENER TORQUE SETTINGS:

M6 – 9Nm (4lb ft)

M8 – 22Nm (16lb ft)

M10 – 44Nm (32lb ft)

M12 – 77Nm (57lb ft)

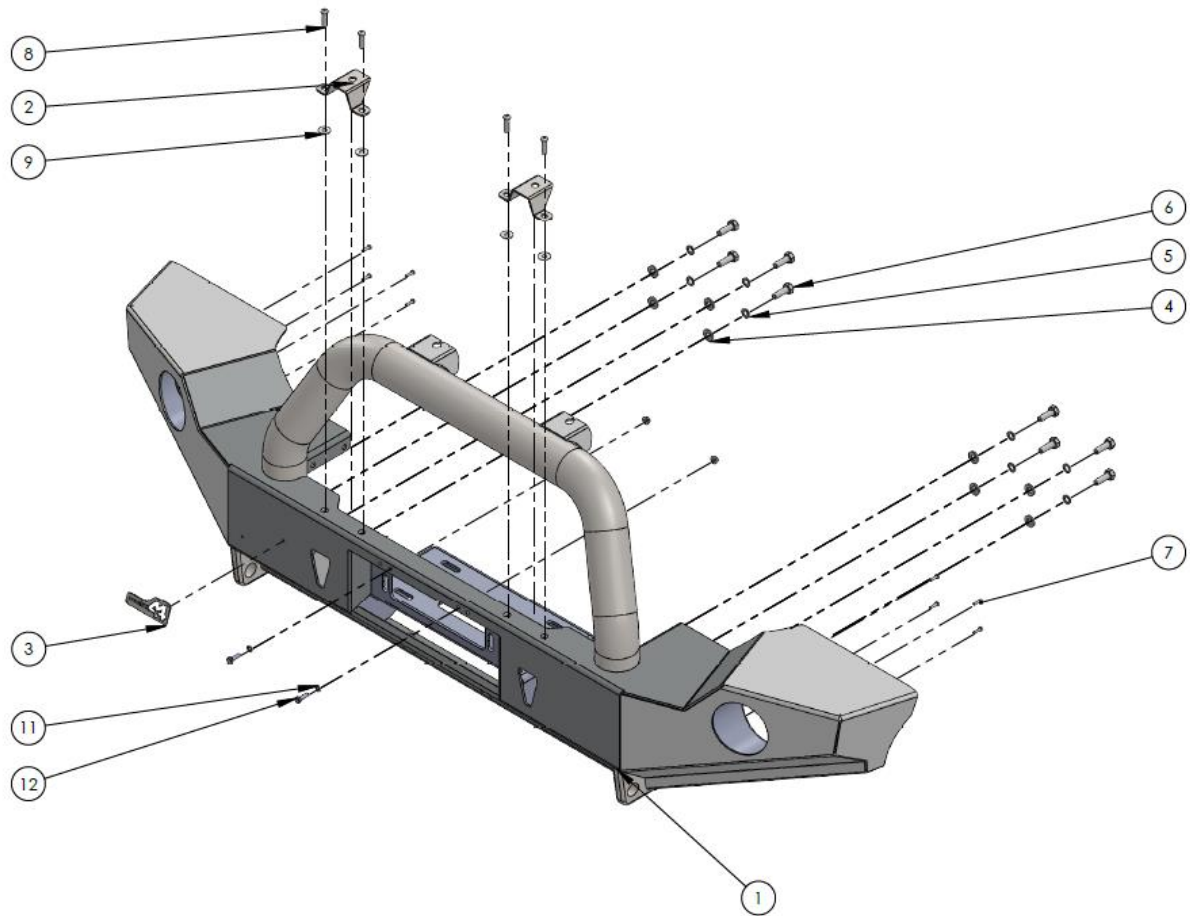
TOOLS REQUIRED:

Hand Spanners and Socket set

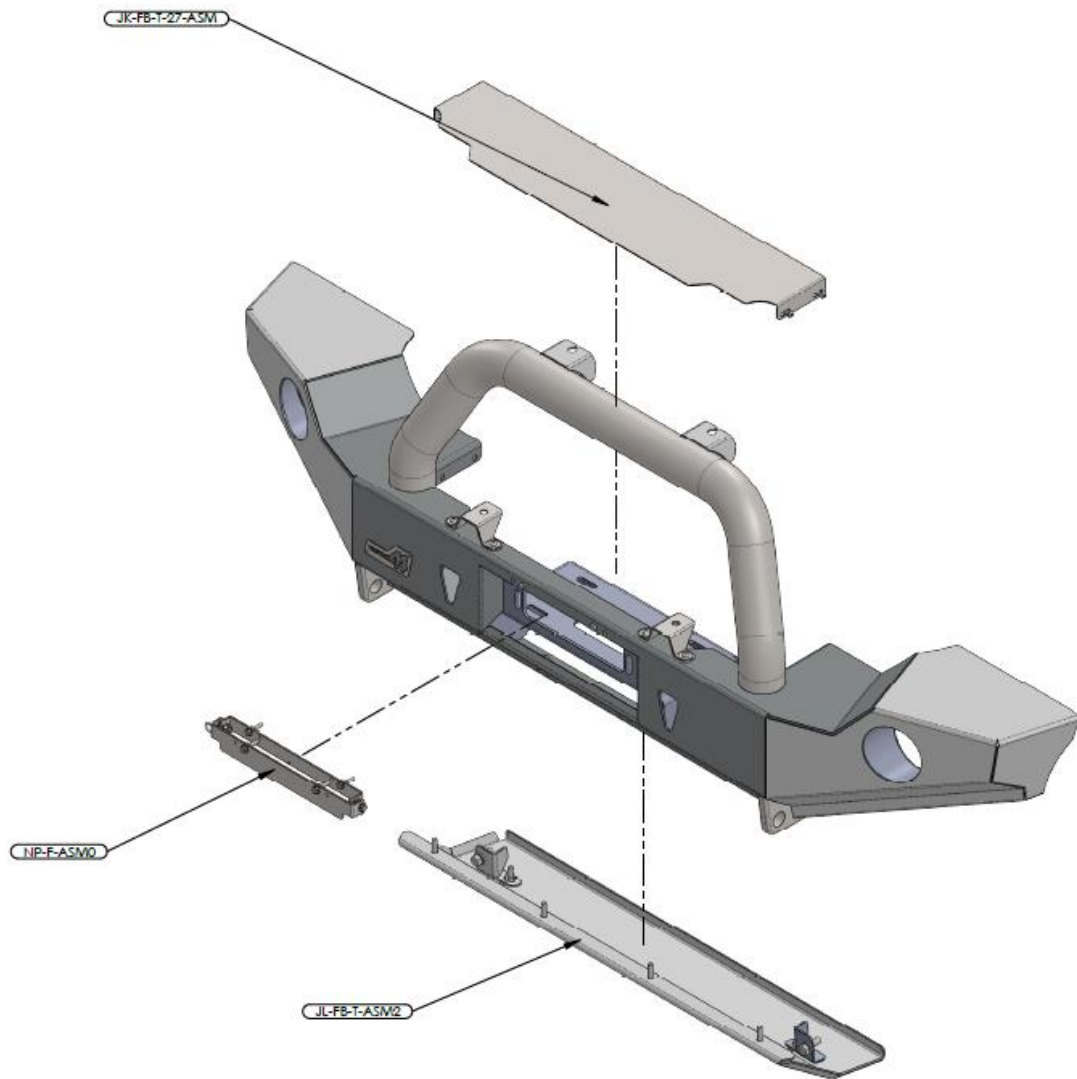
Phillips head screwdriver

Allen Keys

Components and parts



ITEM NO.	PART NUMBER	DESCRIPTION	QTY.
1	JL-FB-T-ASM1	JEEP JL ASY	1
2	JK-FB-T-14	SPOT LIGHT MOUNT	2
3	U4X4-LOGO PLATE- 1	LOGO PLATE-1	1
4	M10 HD WASHER	M10 HD WASHER Z/P	8
5	M10SW	M10 SPRING WASHER	8
6	M10X30	M10 X 1.5 X 30MM BOLT	8
7	M4 x 16 pan head screw	M4 x 16 Pan head screw z/p	8
8	M8X30 BHCS	M8X30 BUTTON HEAD CAP SCREW Z/P	4
9	M8 FW X 22	FLAT WASHER 8MM LARGE	4
10	M6 FN	FLANGE NUT M6	2
11	M6 FW	FLAT WASHER 6MM	2
12	M6X20	BOLT M6 X 20	2



OPTIONAL EXTRAS

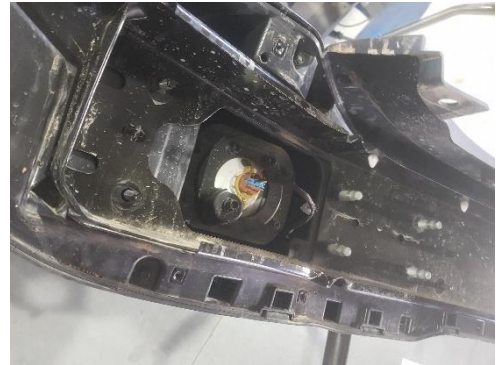
PART NUMBER	DESCRIPTION	QTY.
JK-FB-T-27-ASM	WINCH DELETE PLATE ASM	1
NP-F-ASM0	NUMBER PLATE FLIP	1
JL-FB-T-ASM2	JEEP JL SKID PLATE ASM	1

Step 1

Remove original plastic bumper and all hardware behind as per your factory service manual.

Unplug your fog lights loom and leave wires hanging as these will be reused later.

Remove your fog lights from the plastic bumper.



Step 2

Unplug your fog lights loom and leave wires hanging as these will be reused later.

Note: remove loom by pushing through clips



Step 3

Line up your stock fog lights with the mounting holes and secure with provided M4 pan head screws.

Re-attach wiring loom to lights.



Step 4

If fitting optional winch light, lightly tap in the light into recess hole with a mallet and secure with self-tapping screws.



Step 5

This step requires the help of a friend.
Lift bar up to your jeep with your friend and feed an M10 bolt with spring washer and washer into the bar through the chassis. Hand tighten to hold the bar on the jeep, and then repeat for other side.
Proceed to put all the bolts in through chassis.
Torque up each nut.



Step 6

If you will be fitting a winch to the bar you can access the winch bolts from below the bar.



Step 7

Your new bar has been designed to suit a roller fair lead for your winch; however, a hawse fair lead will still fit.

When fitting a winch first fit the fairlead by inserting bolts through the front of the bar (supplied with your winch). Torque up the bolts after lining up fairlead.

Next place the winch on the bars cradle and insert the 4 bolts from underneath and torque up.

Step 8

Some winches have extended motor housings which could come into contact with a folded edge of sheet metal on your wrangler.

If this is the case you may need to trim the folded edge with an angle grinder.

Most winches will not require this trimming operation.

If no winch is installed, an optional winch delete plate can be installed



Step 9

Fit your driving light mounts on top of the bar with M8 hardware. These are recommended to face backward depending on your lights.



Step 10

If using the Uneek4x4 number plate flip, use supplied hardware to fit to the bull bar now.

Don't forget to reconnect your fog lights loom.



Finished Product



Revised: 07/08/2020

***Australia's Best
Off Road Products
Created... Not Cloned***

20 Gateway Drive, Carrum Downs, VIC, 3201

1800 806 952

www.uneek4x4.com.au

