

UNECK44
AUSTRALIA
OFF ROAD ACCESSORIES

SKU: JK-RB-ASM11



Fitting Instructions

Jeep JK Wrangler 2007 on Rear Bumper

***Australia's Best Off Road Products
Created... Not Cloned***

Contents

WHY UNEEK	3
IMPORTANT INFORMATION	4
COMPONENTS AND PARTS	5
COMPONENTS AND PARTS	7
STEP 1	9
STEP 2	9
STEP 3	9
STEP 4	9
STEP 5	10
STEP 6	10
STEP 7	10
STEP 8	10
STEP 9	11
STEP 10	11
STEP 11	11
STEP 12	11
STEP 13	12
STEP 14	12
STEP 15	12
STEP 16 OPTIONAL REAR WINCH	12
STEP 17	13
STEP 18	13
STEP 19	13
STEP 20	13
STEP 21	14
STEP 22	14
STEP 23	14
STEP 24	14
STEP 25 OPTIONAL TYRE CARRIER	14
STEP 26	15
STEP 27	15
STEP 28	15
STEP 29	15
STEP 30	16
STEP 31	16
STEP 32	16
STEP 33	17
STEP 34	17
STEP 35	17
STEP 36	18
STEP 37	18
STEP 38 OPTIONAL JERRY CAN MOUNT	18
FINISHED PRODUCT	19

Why Uneek

Australian Designed and Built

All our products are designed and manufactured right here in Australia, allowing us to have better lead times and better quality control than companies manufacturing overseas. By supporting us you're supporting to grow the Australian economy and our brand.

Uneek Styling

We do not design our bars to look the same across the vehicle range. We fully develop our own product to individually suit each vehicle. We take time in designing from scratch and then test all our bars to comply with all relevant ADRs and Australian Standards.

Lightweight Through Smart Engineering

Having a steel bar doesn't mean you have to add more weight than is required to the front of your vehicle. Our engineering practises ensure we have the right protection, designed the right way to ensure protection is at its maximum and weights at its minimum.

Proven Off Road

We take our products out and test them right here in the heart of our country in our Australian conditions so we know our products can withstand anything you throw at them.

Increased Approach Angles

Our bars are designed to give you the best advantage while off road, with increased approach angles means you can tackle those tough and steep angles better than you could with the original setup or other alternatives.

Warranty

Uneek 4x4 back itself as Australia's leading steel bull bar manufacturer. This is why we provide you with the best steel bar warranty in Australia - 5 years.

Important Information



PLEASE READ BEFORE INSTALLATION.

- This product must be installed exactly as per these instructions using only hardware supplied
- In the event of damage to any bumper bar component, contact Uneek 4x4 Pty Ltd or an authorized stockist for options.
- Do not use this product for any vehicle make or model, other than specified on these instructions.
- The installation of this product is recommended by trained personnel.
- These instructions are correct as at the publication date. Uneek 4x4 Pty Ltd cannot be held responsible for the impact of any changes subsequently made by the vehicle manufacturer.
- During installation, it is the duty of the installer to check correct operation/ clearances of all components
- Supplied tow points are designated as tow points only. Use these in a recovery at your own risk.
- Installation time is estimated at 2.5 hours for the rear bumper including removing factory bumper, 1 hour for the rear winch mount, 1 hour for the tyre carrier and 20 min per Jerry can mount
- The optional rear winch mount only works with the Uneek 4x4 rear bumpers. If you want to run a spare tyre you need to run either Uneek 4x4's tyre carrier or another that lifts the spare up above the winch.
- This winch mount still works with the factory tow hitch
- Not all winches fit this cradle. Winches with long motors will not fit. Only use low mount winches in this cradle. Overall length of the winch must not exceed 630mm
- This product must be installed exactly as per these instructions using only hardware supplied
- The optional tyre carrier is a heavy duty item that is designed to take the weight of up to a 37" tyre and two full jerry cans. It opens with the rear door for factory like operation. Jerry can mounts or optional and not included as standard.
- Optional Jerry can mounts are designed to work in conjunction with the Uneek 4x4 JK wrangler tyre carrier. They may also work with other manufacturers products.
- Always secure your jerry can with a ratchet strap to the mount and not a flexible bungy cord

FASTENER TORQUE SETTINGS:

M6 – 9Nm (4lb ft)

M8 – 22Nm (16lb ft)

M10 – 44Nm (32lb ft)

M12 – 77Nm (57lb ft)

TOOLS REQUIRED:

Hand spanners and socket set, Allan keys (hex), power drill bit, centre punch.

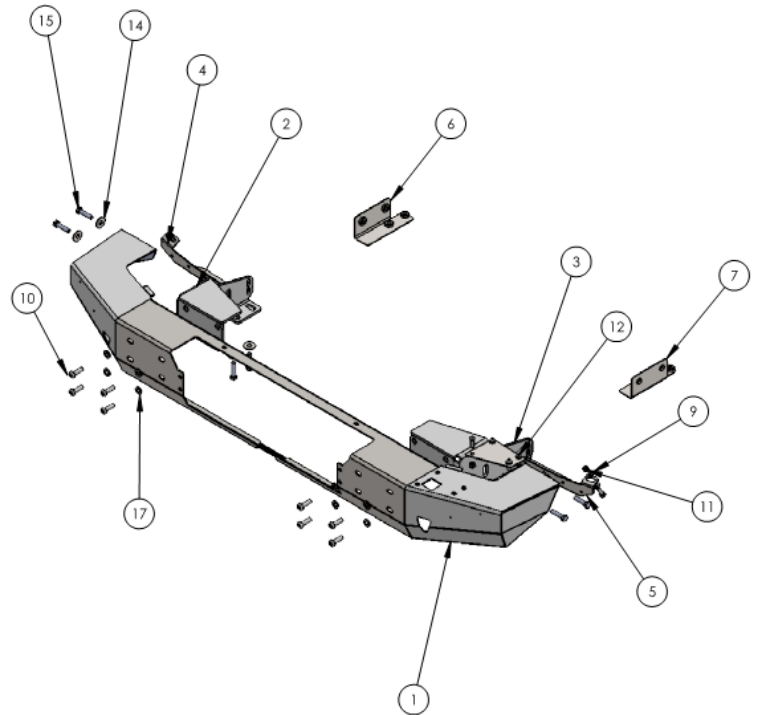
Components and parts

Rear Bumper

ITEM NO.	PART NUMBER	Description	QTY.
1	JK-RB-ASM-1	JK REAR BUMPER	1
2	JK-RB-ASM13	CHASSIS MOUNT LH	1
3	JK-RB-ASM13R	CHASSIS MOUNT RH	1
4	JK-RB-B-13	LH SUPPORT	1
5	JK-RB-B-13R	RH SUPPORT	1
6	JK-RB-ASM15	CHASSIS NUT PLATE LH	1
7	JK-RB-ASM15R	CHASSIS NUT PLATE RH	1
8	U4X4-LOGO PLATE- 1	LOGO PLATE-1	1

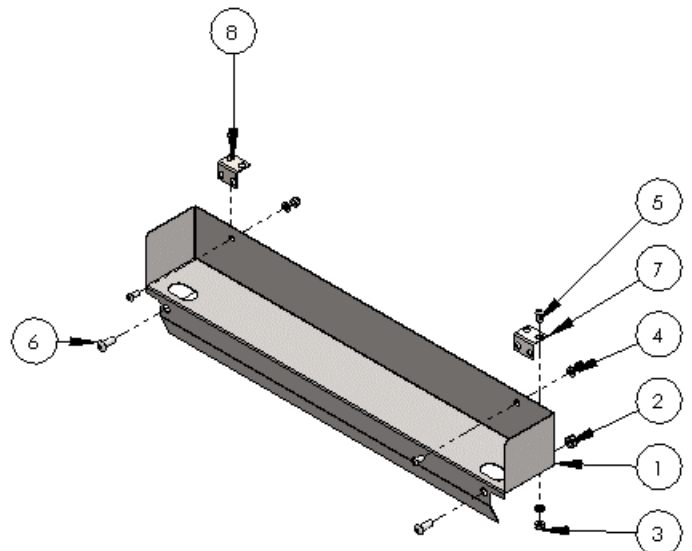
SMALL PARTS KIT

ITEM NO.	PART NUMBER	Description	QTY.
9	M10 HD WASHER	M10 HD WASHER Z/P	4
10	M12X40 BHCS	M12X40 BHCS	8
11	M10 NYLOC	NYLOC SELF LOCKING NUT	6
12	M10X30 BHCS	M10X30 BUTTON HEAD CAP SCREW Z/P	4
13	JK-RB-B-16	TYRE CARRIER BLANKING PLATE	1
14	M12 FW X 37	M12 FLAT WASHER LARGE	8
15	M12X50X1.75	M12 X 50 X 1.75 BOLT	8
16	M10X30	M10 X 1.5 X 30MM BOLT	2
17	M12 HD WASHER	M12 HD WASHER	8



Default step unless otherwise selected

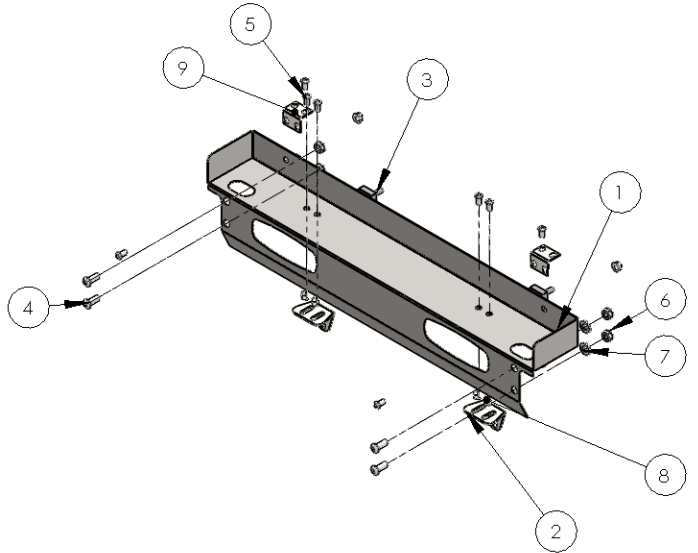
ITEM NO.	PART NUMBER	DESCRIPTION	QTY.
1	JK-RB-B-15	LOW STEP NO LIGHTS	1
2	M10 NYLOC	NYLOC SELF LOCKING NUT	2
3	M8 NYLOC	NYLOC SELF LOCKING NUT, ST STL A2 ISO	4
4	M8 WASHER	M8 WASHER	4
5	M8X16 BHCS	M8X16 BUTTON HEAD CAP SCREW Z/P	4
6	M10X25 BHCS	M10X25 BUTTON HEAD CAP SCREW Z/P	2
7	JK-RB-B-17	STEP TIE IN	1
8	JK-RB-B-17R	STEP TIE IN	1



Components and parts

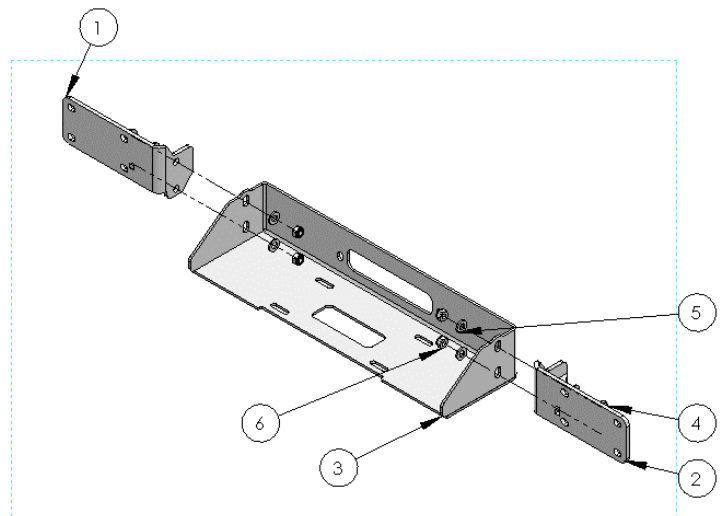
Optional step with LED lights

ITEM NO.	PART NUMBER	DESCRIPTION	QTY.
1	JK-RB-B-6	STANDARD CENTRE COVER	1
2	JK-RB-B-14	LED LIGHT MOUNT TABS	2
3	SM-811A-CW	LED flood light 15W	2
4	M10X25 BHCS	M10X25 BUTTON HEAD CAP SCREW Z/P	4
5	M8X16 BHCS	M8X16 BUTTON HEAD CAP SCREW Z/P	8
6	M10 NYLOC	NYLOC SELF LOCKING NUT	4
7	M10 HD WASHER	M10 HD WASHER Z/P	4
8	M8 FLANGE NUT	M8 FLANGE NUT	8
9	JK-RB-B-17	STEP TIE IN	2



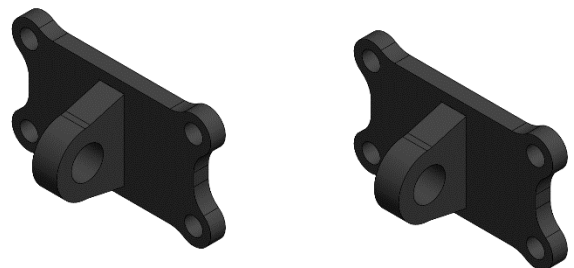
Optional rear winch mount

ITEM NO.	PART NUMBER	DESCRIPTION	QTY.
1	JK-RB-B-ASM2	WINCH CRADEL SUPT BRKT	1
2	JK-RB-B-ASM2R	WINCH CRADEL SUPT BRKT RH	1
3	JK-RB-B-7	WINCH MOUNT	1
4	M12-1.75 x 40	M12x40-8.8 HEX BOLT Z/P	4
5	M12 HD WASHER	M12 HD WASHER	8
6	M12 NYLOC	NYLOC SELF LOCKING NUT, ST STL A2 ISO	4



Optional tow hooks

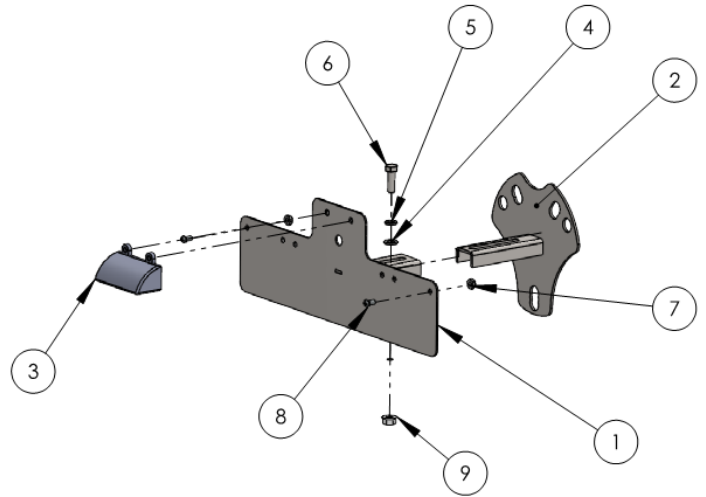
2x JG-TH-ASM0



Components and parts

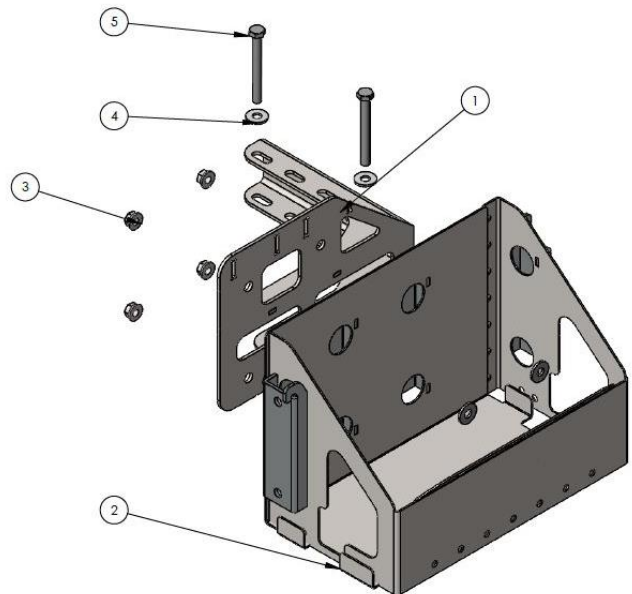
Optional number plate relocation

ITEM NO.	PART NUMBER	Description	QTY.
1	JK-RB-ASM7	NUMBER PLATE MOUNT	1
2	JK-RB-ASM6	NUMBER PLATE MOUNT	1
3	BR25B	LED NUMBER PLATE LIGHT	1
4	M8 WASHER	M8 WASHER	1
5	M8 SPRING WASHER	M8 SPRING WASHER	1
6	M8X25	BOLT M8 X 25	1
7	M5 NYLOCK NUT	M5 NYLOCK NUT	2
8	M5X10 PSCREW	M5 X 10 PH SCREW	2
9	M8 FN	FLANGE NUT M8	1



Optional jerry can mount

ITEM NO.	PART NUMBER	DESCRIPTION	QTY.
1	JK-RB-J-ASM2R	JERRY CAN MOUNT JK REAR BAR	1
2	JC-RB-ASM0	JERRY CAN REAR BAR FULL KIT	1
3	M10 FN	M10 Flange nut	6
4	M10 FLAT WASHER X 25	M10 FW	6
5	M10 x 90	M10 X 90 HEX BOLT Z/P	2



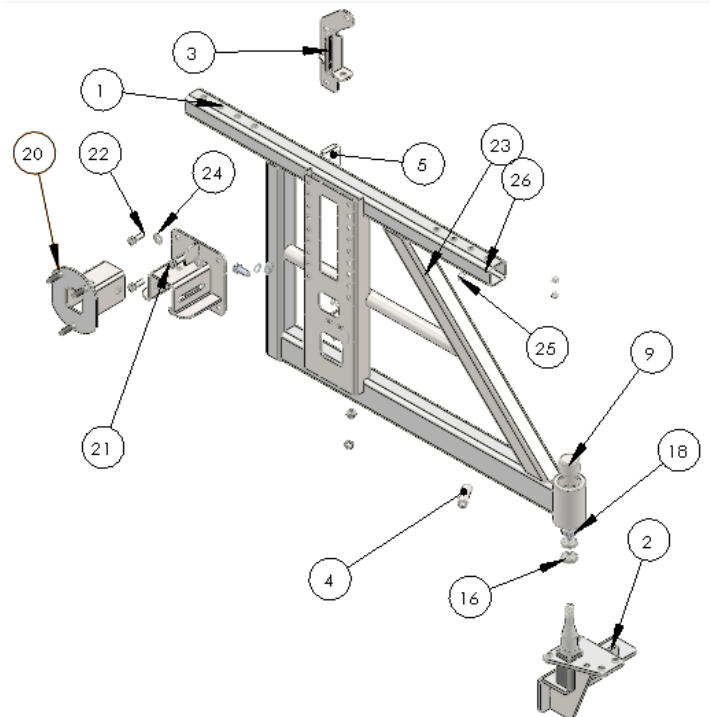
NOTES:

1. RH PART SHOWN, LH PART HAS SAME JERRY CAN HOLDER BUT OPPOSITE MOUNT

Components and parts

Optional tyre carrier

ITEM NO.	PART NUMBER	DESCRIPTION	QTY
1	JK-RB-A SM-4	TYRE CARRIER	1
2	JK-RB-A SM-3	STUB AXLE ASM	1
3	JK-RB-A SM-8	DOOR SUPPORT	1
4	JK-RB-TC-23	TIE ROD ADJUSTER	1
5	JK-RB-23	SOFT STOP	1
6	Rod end m12 male	ROD END M12 MALE	1
7	M12 HD WASHER	M12 HD WASHER	6
8	M12 NYLOC	NYLOC SELF LOCKING NUT, ST STA A2 ISO	2
9	HUB CAP	HUB CAP AND SPLIT PIN	1
10	Rod end m12 male LH THREAD	ROD END M12 LEFT HAND THREAD	1
11	M12-1.75 x 50	M12x50-8.8 HEX BOLT Z/P	2
12	M8 SPRING WASHER	M8 SPRING WASHER	3
13	M8 WASHER	M8 WASHER	7
14	M12 JAM NUT RH	M12 JAM NUT	1
15	M12 JAM NUT LH	M12 JAM NUT REVERSE THREAD	1
16	TRAILER BEARINGS		2
17	M8 NYLOC	NYLOC SELF LOCKING NUT, ST STA A2 ISO	2
18	CASTLE NUT	CASTLE NUT	1
19	SHIPPER 1200 X 600 X 300	CARTON 1200 X 600 X 300	1
20	WK2-RB-A SM3	WK2 TYRE MOUNT	1
21	03-0090	BRACKET ASSY TYRE MOUNT	1
22	M10 X 30 BOLT	M10 X 30 HEX ZP 8.8	4
23	M12 FW	M12 FLAT WASHER	2
24	M10 FW X25	M10 FLAT WASHER X 25MM WIDE	4
25	M12 SW	M12 SPRING WASHER	2
26	M12 X30 X1.75	BOLT M12 1.75 PITCH	2
27	M10 NYLOC	NYLOC SELF LOCKING NUT	4
28	M8 FN	FLANGE NUT M8	2
29	M8 X25	BOLT M8 X 25	2
30	M8 FW X 22	FLAT WASHER 8MM LARGE	2



Step 1

Remove original plastic bumper and all hardware behind as per your factory service manual. 2 bolts each side, and 2 in the middle. Unplug your fog lights loom. Also remove factory tow hook.



Step 2

Fit stainless-steel step from behind the bumper with M10 button head cap screws and nyloc nuts. 4 off for step with light mounts, 2 off with step with no lights. If fitting a rear winch, follow rear winch instructions now to fit winch cradle.



Step 3

If no tyre carrier is to be mounted fit blanking plate for tyre carrier hole with M10 button head cap screws and nyloc nuts.



Step 4

Fitting chassis nut plate into the chassis on the left-hand side of the jeep you will be able to fit the LH chassis mount with M12 x 50 bolts. Use heavy duty M12 washers, spring washer and M12 mud guard washer for side bolts.



Step 5

Reuse factory bolts at the front to hold bracket in place. This factory bolts will be removed later.



Step 6

Repeat steps 4 and 5 above for the right-hand side.



Step 7

Measure the bottom holes on the left-hand side and mark the same position for the right-hand side.



Step 8

Centre punch the holes you marked and drill a 13mm hole.



Step 9

With the help of a friend lift the bumper on to the chassis mounts and feed the M12 Button head cap screws through the tow hooks and torque up.



Step 10

Remove the factory bolts on the front of each chassis mount.



Step 11

Fit side support brackets as shown. Reuse factory bolts.



Step 12

Attached M10 bolt with washers either side and nyloc nut to the bumper.

Repeat for other side.



Step 13

Using M6 hardware fit Mudflaps to bracket.

If you have a lot of offset on your wheels you can skip a hole and mount the mud flaps further out to cover your tyres.

Repeat for other side.



Step 14

To fit your number plate relocation, remove spare tyre and knock out centre cap if fitted. Place backing plate of number plate relocation on factory tyre carrier. Fit tyre on to tyre carrier and torque up wheel nuts.



Step 15

Fit outer plate of number plate relocation with supplied nut plate and M8 bolt and washer. Run the original number plate wires or new ones from the tail lamp up to the new wires of the relocation bracket. Use a quick connect fitting found at any auto parts shop so you can easily remove the spare tyre later without messing with electrical tools. Don't forget to refit your number plate now.



Step 16 Optional rear winch

Remove tow hooks and bolts that mount bumper to chassis mounts. Remove tyre carrier. Remove stainless steel step.



Step 17

You need rotate the gearbox on your winch so your clutch lever is facing back. This allows the tyre carrier to miss the winch.



Step 18

Fit winch fairlead and winch to cradle.



Step 19

Most low mount winches with shorter motors will fit this cradle.



Step 20

Fit new winch support brackets under tow hooks and torque up.



Step 21

Place winch cradle with winch in-between new winch support brackets. Using M12 bolts with washers both sides and nyloc nuts hold winch cradle in place. You want to push winch cradle down as far as it will go. Then torque up bolts.



Step 22

You can see the winch clutch lever here turned to be out of the way.



Step 23

Wire up winch.



Step 24

Fit tyre carrier as per Tyre carrier instructions. Make sure your tyre is up high enough to clear the winch.



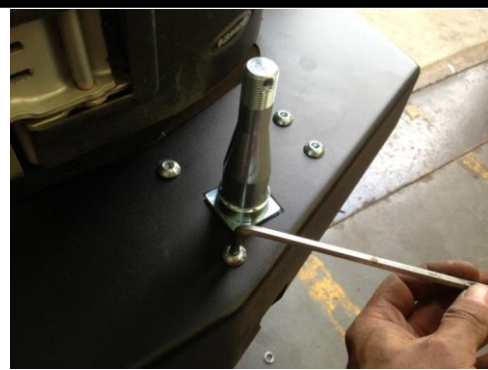
Step 25 Optional tyre carrier

Remove factory tyre carrier from rear door.
Retain bolts.



Step 26

After installing your Uneek 4x4 rear bumper feed the stub axle assembly up through from underneath. Make sure the 2 M12 bolts in the side of the chassis are removed first. Using M10 button head cap screws fix stub axle assembly on to bumper as shown.



Step 27

Refit the 2 M12 bolts spring washers and large flat washers through stub axle bracket as shown to the right. Torque bolts.



Step 28

Place seal on stub axle as shown. Grease larger roller bearing and place over stub axle as shown.



Step 29

Lift up tyre carrier and fit on to stub axle. Grease smaller bearing and place with taper facing down on stub axle. Then place washer over bearing and tighten the whole lot with supplied castle nut. Check operation of swing out. It's best to have a slightly firm preload on the tyre carrier bearings to allow the tyre carrier to stay open with your door if you do not have a strut to hold it open. Once you're happy with the swing out operation fit cotter pin through hole in castle nut. Gently press bearing cap over hub with a rubber mallet. If your tyre carrier appears to not sit level you can loosen up stub axle bolts and place washers between bumper and stub axle mount to tilt stub axle till its square to the bumper. This is not necessary in most cases.



Step 30

With the tyre carrier moved out of the way, bolt on the door support bracket with M8 bolts spring washer and flat washers as shown. Use factory hardware to plug out the rest of the holes.

2012 and newer jeeps will need the plastic door vent trimmed to suit this bracket.



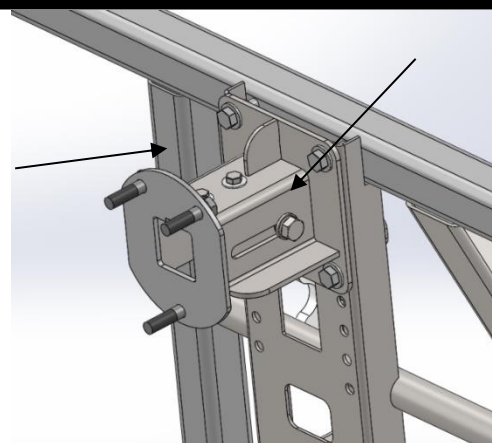
Step 31

Loosely fit soft stop with M8 bolts, washers either side and nyloc nuts. This will be adjusted up or down after tie rod is installed on tyre carrier.



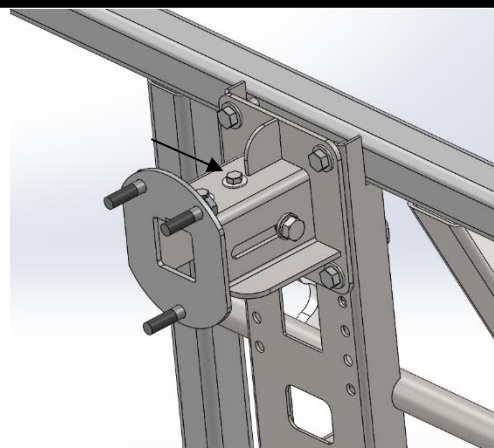
Step 32

Next is to fit the tyre mount. Bolt the bracket tyre mount assembly in place and torque m10x30 bolts with spring washer and flat washers either side. Fit the tyre insert and loosely secure with 2 M12x 30 bolts and spring washer and flat washer. Which holes you pick dictate the how high your spare will sit. This depends on your tyre size and what rear step you are running with your bumper. Typically, if you have the rear winch attached and have 35"-37" tyres you will need to use the top setting or second down. If you have the high clearance step (no LED lights) with 33" tyres you can use the lowest setting. Otherwise use the second from the top.



Step 33

You next need to put the tyre on the carrier and push the tyre back as far as it can go. The idea for the bottom of the tyre to rest against the tyre carrier itself. Mark this position on the top of the tyre mount as shown with the arrow to the right. Then move your mark 5mm further back towards the car to ensure the tyre is forced hard on to the tyre carrier when installed. Drill out these holes with 10mm drill and fit M8x25 bolts with spring washer's flat washers and flange nuts. Torque all bolts.



Step 34

To fit the tie bar you must first pre assemble the tie bar. Screw in rod end and jam nuts to corresponding side of turn block. One side is RH thread, one side is LH thread. This allows you to adjust the tyre carrier in or out without having to remove it. Simply loosen off the jam nuts and turn the turn block with a 19mm spanner.



Step 35

Fit tie bar to rear door support bracket as shown with the door open (this leaves more room) fit tie bar to tyre carrier. Leave tie bar adjusted out as far as it will go. Now close your door. You should see a gap between the tyre carrier and the soft stop. Adjust the length of the tie rod until the tyre carrier sits firm on the soft stop with the door is closed. Once you're happy with its position torque up each jam nut on to the turn block. As the soft stop wears you will periodically need to adjust the tie rod to suit.



Step 36

Fit Tyre mount with 2 M12 bolts washers either side or nyloc nuts. This tyre mount is adjustable in and out depending on your wheel offset. It is recommended to try use the setting pushing the tyre closest to the vehicle first.

The aim is to have the tyre as close to tyre carrier as possible. It is best if the tyre rests against the tyre carrier to prevent wobbling of the tyre.



Step 37

Don't forget to refit your number plate relocation bracket and fit tyre.

Make sure you torque up nuts on soft stop and adjust tyre height or tyre-stick out as needed.

You're done, enjoy.



Step 38 Optional jerry can mount

Fit RH jerry can mount to RH side of tyre carrier, or vice versa for LH using M10 Hardware. Then secure Jerry can holder to mount with M8 hardware.

Depending on your tyre size you can choose to mount the jerry can closer or further out from the centre of the tyre carrier.

Remember only to use ratchet straps to secure your jerry can to the mount.



Finished Product



Revised: 28/08/2019

***Australia's Best
Off Road Products
Created... Not Cloned***

20 Gateway Drive, Carrum Downs, VIC, 3201

1800 806 952

www.uneek4x4.com.au

