

UNEK44
AUSTRALIA
OFF ROAD ACCESSORIES

SKU: KK-FB-ASM0



Fitting Instructions

Jeep KK Cherokee/Liberty 08-13

Bull Bar

***Australia's Best Off Road Products
Created... Not Cloned***

Contents

WHY UNEEK	3
IMPORTANT INFORMATION	4
COMPONENTS AND PARTS	5
STEP 1	6
STEP 2	6
STEP 3	6
STEP 4	6
STEP 5	7
STEP 6	7
STEP 7	7
STEP 8	7
STEP 9	8
STEP 10	8
STEP 11	8
STEP 12	8
STEP 13	9
STEP 14	9
STEP 15	9
STEP 16	9
STEP 17	10
STEP 18	10
FINISHED PRODUCT	11

Why Uneek

Australian Designed and Built

All our products are designed and manufactured right here in Australia, allowing us to have better lead times and better quality control than companies manufacturing overseas. By supporting us you're supporting to grow the Australian economy and our brand.

Uneek Styling

We do not design our bars to look the same across the vehicle range. We fully develop our own product to individually suit each vehicle. We take time in designing from scratch and then test all our bars to comply with all relevant ADRs and Australian Standards.

Lightweight Through Smart Engineering

Having a steel bar doesn't mean you have to add more weight than is required to the front of your vehicle. Our engineering practises ensure we have the right protection, designed the right way to ensure protection is at its maximum and weights at its minimum.

Proven Off Road

We take our products out and test them right here in the heart of our country in our Australian conditions so we know our products can withstand anything you throw at them.

Increased Approach Angles

Our bars are designed to give you the best advantage while off road, with increased approach angles means you can tackle those tough and steep angles better than you could with the original setup or other alternatives.

Warranty

Uneek 4x4 back itself as Australia's leading steel bull bar manufacturer. This is why we provide you with the best steel bar warranty in Australia - 5 years.

Important Information



PLEASE READ BEFORE INSTALLATION.

- When installed in accordance with these instructions, the front protection bar does not affect operation of the SRS airbag.
- This product must be installed exactly as per these instructions using only hardware supplied.
- In the event of damage to any bull bar component, contact Uneek 4x4 Pty Ltd for options. Repairs or modifications to the impact absorption system must not be attempted.
- Do not use this product for any vehicle make or model, other than specified on these instructions.
- Do not remove labels from this product.
- This product or its fixings must not be modified in any way.
- The installation of this product is recommended by trained personnel.
- These instructions are correct as at the publication date. Uneek 4x4 Pty Ltd cannot be held responsible for the impact of any changes subsequently made by the vehicle manufacturer.
- During installation, it is the duty of the installer to check correct operation/ clearances of all components.
- Supplied tow points are designated as tow points only. Use these in a recovery at your own risk.
- Installation time is estimated at 3-4 hours including removing factory bumper.



EYE & EAR PROTECTION REQUIRED



DRILLING REQUIRED



TWO PERSON LIFT REQUIRED



TORQUE SETTING



CUTTING OR GRINDING REQUIRED

FASTENER TORQUE SETTINGS:

M6 – 9Nm (4lb ft)

M8 – 22Nm (16lb ft)

M10 – 44Nm (32lb ft)

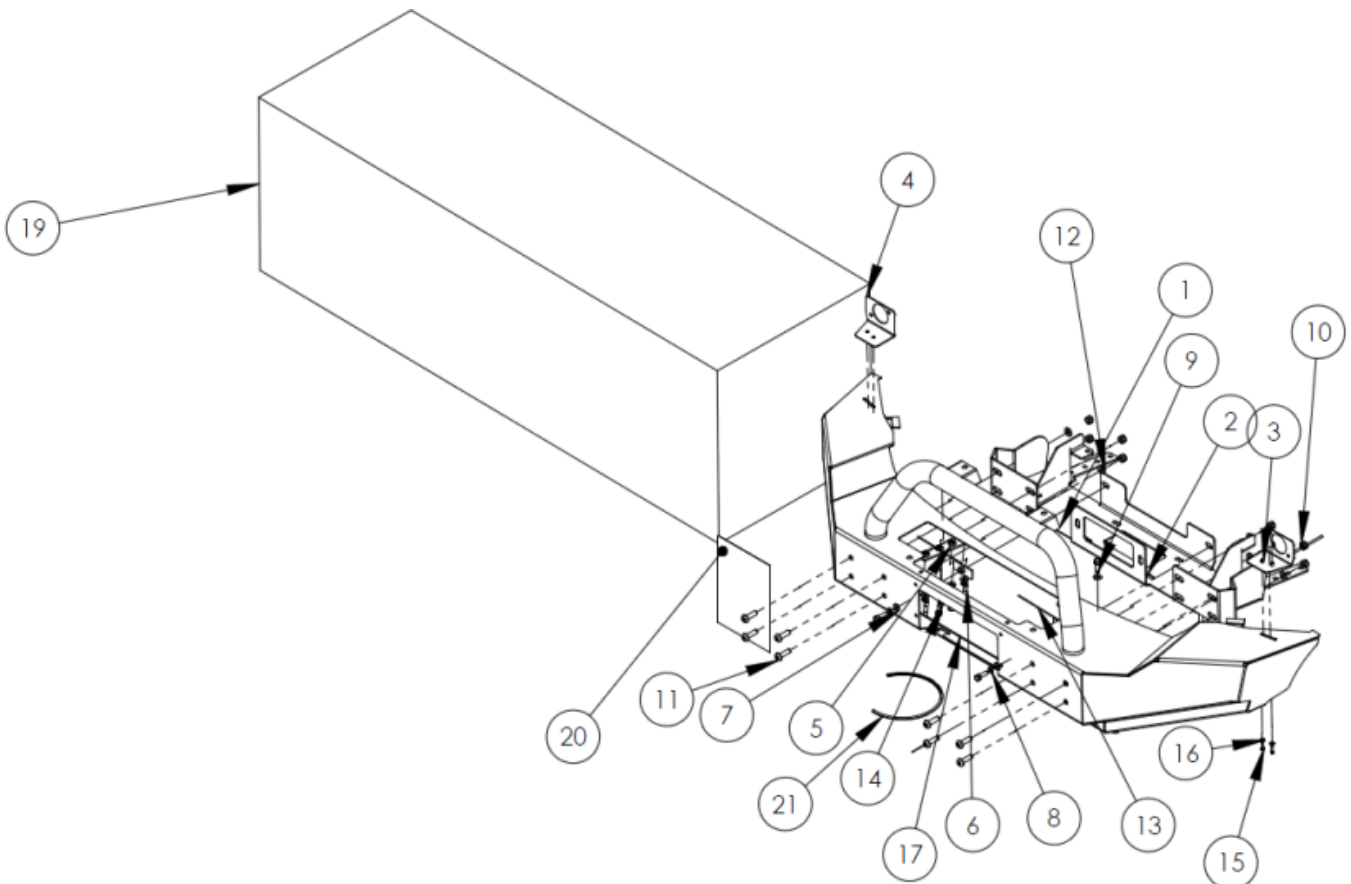
M12 – 77Nm (57lb ft)

TOOLS REQUIRED:

Hand spanners and socket set, Philips head screwdriver, hand drill driver, 12mm drill bit, centre punch, safety glasses, angle grinder, hacksaw, pliers.

Components and parts

ITEM NO.	PART NUMBER	Description	QTY.
1	KK-FB-ASM1	Front bar weldment	1
2	KK-FB-ASM2	CHASSIS MOUNT	2
3	KK-FB-ASM5	INDICATOR LAMP BRACKET ASM	1
4	KK-FB-ASM5R	INDICATOR LAMP BRACKET ASM RH	1
5	KK-FB-9ASM	NUT PLATE ASM	2
6	M10x50	M10x50 HEX BOLT Z/P 8.8	8
7	M10 HD WASHER	M10 HD WASHER Z/P	12
8	M10 SPRING WASHER	M10 SPRING WASHER	10
9	M10-1.5 x 30	M10x30 HEX BOLT Z/P 8.8	4
10	M12 NYLOC	NYLOC SELF LOCKING NUT, ST STL A2 ISO	8
11	M12X40 BHCS	M12X40 BHCS	8
12	M12 HD WASHER	M12 HD WASHER	8
13	M10 NUT PLATE	M10 NUT PLATE	2
14	M10 NYLOCK NUT	M10 NYLOCK NUT	2
15	M5 x 20	M5 X 20 HEX BOLT Z/P	4
16	m5 washer	m5 washer	4
17	M6 x 20	M6 X 20 HEX BOLT Z/P	2
18	M6 NYLOCK NUT	M6 NYLOCK NUT	2
19	CARTON 1860 X 600 X 600	KK BULL BAR CARTON	1
20	KK-FB-FI	FITTING INSTRUCTIONS	1
21	PINCH WELD BLACK 600MM	PINCH WELD BLACK 600MM	1



Step 1

Remove original plastic bumper and all hardware behind as per your factory service manual.

Unplug your indicator lights loom and leave wires hanging as these will be reused later.



Step 2

Remove your indicator lights from the plastic bumper. Peel off retaining washers with pliers and retain for later use.



Step 3

Insert the nut plates inside the chassis rails. Note these are not symmetrical. Look at how the winch cradle will fit on the car and line up the holes. Larger gap between nuts facing forward. Ensure nuts are facing up.



Step 4

Lift the winch cradle up to the car and use 2 M10 x 50 bolts on either side to hold the cradle in place. The bolt holes of the winch cradle should line up with corresponding holes in chassis. Some vehicles may require these holes to be drilled out slightly. Torque these bolts up to ensure the winch plate is sitting flush with the front of the car frame. Not too tight as you will be removing these bolts shortly.



Step 5

This picture shows the bolts on one side holding the winch cradle in place.



Step 6

Another view of the inside of the frame with nut plate and bolts from under side holding winch cradle in place.

From under the vehicle mark the location of the 2 rear bolt holes through the winch cradle that need to be drilled.

Ensure safety glasses are worn when drilling.
Do this for both sides.



Step 7

Remove the winch cradle and centre punch the 2 holes per side that you just marked.

Drill out holes with a 12mm drill.

Ensure safety glasses are worn when drilling.

Re fit the winch cradle and torque up 4 M10 bolts per side to specified figures above. Don't forget to use washers and spring washer for each bolt.



Step 8

Feed the M10 tapped nut plate with wire through the bottom of the frame and secure with an M10 x 30 bolt, washer and spring washer.



Step 9

Torque up M10 x 30 bolts on the front face of the frame.

Repeat for other side.



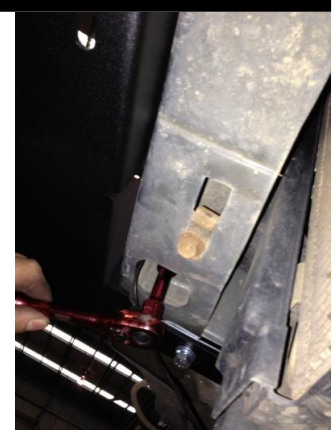
Step 10

Mark holes on top face of frame, centre punch and drill with 12mm drill bit.



Step 11

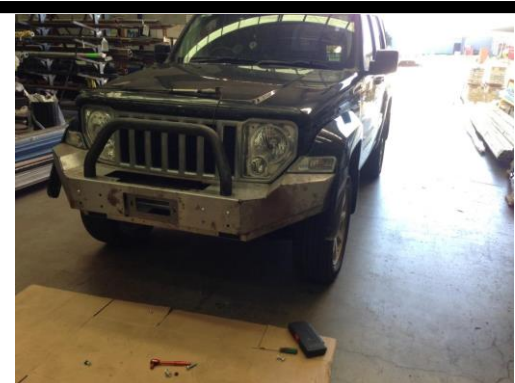
Feed M10 Nyloc from below frame and torque up M10 x 30 bolts from above.



Step 12

With the help of a friend lift bull bar up to the winch cradle and feed M12 button head cap screws through bull bar and using washers and M12 nyloc nuts, torque up all 8 bolts once you're happy the bar is central.

You will need to push the lower part of the plastic flares out of the way to fit the bull bar on.



Step 13

Mark the flare for cutting approximately 15 mm above the edge of the bull bar and trim with angle grinder, hacksaw or shears.

If using a power tool ensure safety glasses are worn.



Step 14

Find the RH and LH indicator brackets. Which one can be identified by holding up with bull bar with indicators inside.

Refit indicator retaining washers back on to secure indicator to bracket.

Line up indicator under the bumper and using M5 screws provided torque up indicators.



Step 15

Cut pinch weld in half then fit to cut section of bumper. Trim as required.

Trim cloth material in front of tyre to suit.



Step 16

If fitting a winch, ensure you fit the winch fairlead first. Depending on bolts supplied with fairlead you may need to have them turned around facing out.

Place winch in cradle and torque up bolts from underneath.



Step 17

Don't forget to refit your number plate with M6 hardware provided. There are holes above and below the fairlead window that you can put your number plate.



Step 18

If the optional bash plate is being fitted you will need to undo all the lower bolts holding the winch cradle on to the car offer up the winch cradle and re-torque bolts.

Don't forget to also bolt the front of the cradle to the lower side of the bull bar with M10 bolts.



Finished Product



Revised: 27/08/2019

***Australia's Best
Off Road Products
Created... Not Cloned***

49-75 Pacific Drive, Keysborough, VIC, 3173

1300 806 952

www.uneek4x4.com.au

