

UNEK44
AUSTRALIA
OFF ROAD ACCESSORIES

SKU: GU-FB-S4C-ASM0



Fitting Instructions

All Nissan Patrol GU Models

Front Protection Bar

***Australia's Best Off Road Products
Created... Not Cloned***

Contents

WHY UNEEK	3
IMPORTANT INFORMATION	4
COMPONENTS AND PARTS	5
STEP 1	6
STEP 2	6
STEP 3	6
STEP 4	6
STEP 5	6
STEP 6	7
STEP 7	7
STEP 8	7
STEP 9	8
STEP 10	8
STEP 11	8
STEP 12	8
FINISHED PRODUCT	9

Why Uneek

Australian Designed and Built

All our products are designed and manufactured right here in Australia, allowing us to have better lead times and better quality control than companies manufacturing overseas. By supporting us you're supporting to grow the Australian economy and our brand.

Uneek Styling

We do not design our bars to look the same across the vehicle range. We fully develop our own product to individually suit each vehicle. We take time in designing from scratch and then test all our bars to comply with all relevant ADRs and Australian Standards.

Lightweight Through Smart Engineering

Having a steel bar doesn't mean you have to add more weight than is required to the front of your vehicle. Our engineering practises ensure we have the right protection, designed the right way to ensure protection is at its maximum and weights at its minimum.

Proven Off Road

We take our products out and test them right here in the heart of our country in our Australian conditions so we know our products can withstand anything you throw at them.

Increased Approach Angles

Our bars are designed to give you the best advantage while off road, with increased approach angles means you can tackle those tough and steep angles better than you could with the original setup or other alternatives.

Warranty

Uneek 4x4 back itself as Australia's leading steel bull bar manufacturer. This is why we provide you with the best steel bar warranty in Australia - 5 years.

Important Information



PLEASE READ BEFORE INSTALLATION.

- When installed in accordance with these instructions, the front protection bar does not affect the operation of the vehicles SRS airbags.
- This product must be installed exactly as per these instructions using only hardware supplied.
- Take a few moments to read instructions thoroughly before beginning work.
- In the event of damage to any bar component please contact Uneek 4x4 in regards to repair/replacement of components.
- Do not use this product for any vehicle make or model other than that specified on these instructions.
- Do not remove labels from this product.
- This product and its fixings must not be modified in any way unless stated in these fitting instructions.
- The installation of this product is recommended for trained personnel.
- These instructions are correct at time of publication. Uneek 4x4 cannot be held responsible for the impact of any changes subsequently made by the vehicle manufacturer.
- During installation it is the duty of the installer to check correct operation/clearances of all components.
- Supplied tow points are designed as tow points only. Use in a recovery operation will be at operator's risk.
- Installation time: 2-3 hours.



EYE & EAR PROTECTION REQUIRED



DRILLING REQUIRED



TWO PERSON LIFT REQUIRED



TORQUE SETTING



CUTTING OR GRINDING REQUIRED

FASTENER TORQUE SETTINGS:

M6 – 9Nm (4lb ft)

M8 – 22Nm (16lb ft)

M10 – 44Nm (32lb ft)

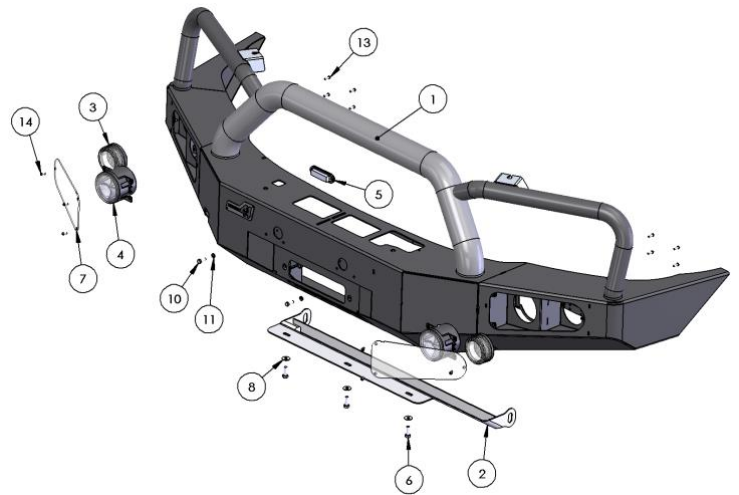
M12 – 77Nm (57lb ft)

TOOLS REQUIRED:

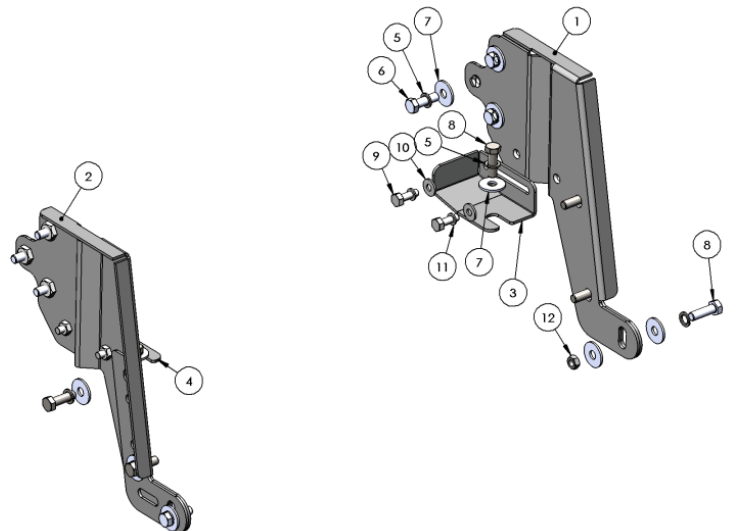
Basic tool kit, satin black paint, soldering iron.

Components and parts

ITEM NO.	PART NUMBER	DESCRIPTION	QTY.
1	GU-FB-S4C(S1C)-ASM1	WELDED ASSEMBLY GU CLASSIC	1
2	09-0012	PANEL ASSY GU STONE CLASSIC	1
3	AUTO 8 LED	LED INDICATOR/PARKER	2
4	LED FOG LIGHT	LED FOG LIGHT	2
5	90862	LED WINCH LIGHT	1
6	M8X25	BOLT M8 X 25	3
7	12-0010	COVER PC FOG LIGHT	2
8	M8 FW X 22	FLAT WASHER 8MM LARGE	3
9	M8 FN	FLANGE NUT M8	3
10	M6X20	M6 X 20 BOLT	2
11	M6 FW	M6 FLAT WASHER	2
12	M6 FN	FLANE NUT M6	2
13	M5X15 PSCREW	M5 X 15 PH SCREW	8
14	M5X10 PSCREW	M5 X 10 PH SCREW	6



ITEM NO.	PART NUMBER	DESCRIPTION	QTY
1	03-0012R	BRACKET ASSY IMPACT RH GU	1
2	03-0012L	BRACKET ASSY IMPACT LH GU	1
3	04-0012R	BRACKET IMPACT ABSORBER RH GU	1
4	04-0012L	BRACKET IMPACT ABSORBER LH GU	1
5	M12SW	M12 SPRING WASHER	10
6	M12X40X1.75	M12 X 40 X 1.75 BOLT	8
7	M12FWX37	M12 FLAT WASHER X 37MM WIDE	12
8	M12X40X1.25	M12 X 40 X 1.25 BOLT	2
9	M10X30	M10 X 30 BOLT	4
10	M10FWX25	M10 FLAT WASHER X 25MM WIDE	4
11	M10SW	M10 SPRING WASHER	4
12	M12NYLOC	M12 NYLOC NUT	2



Step 1

Remove bumper including stone guards and fog lights if fitted. Keep original fasteners together.



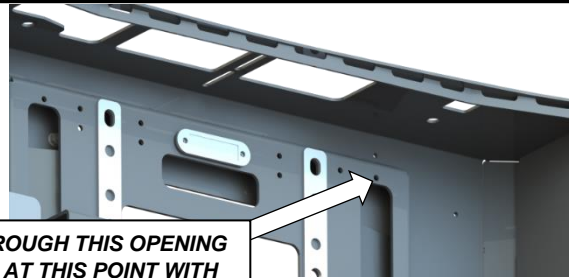
Step 2

Fit newly supplied fog, indicator and parkers to bar before fitting. Secure fog light with M5 x 15 screws supplied.



Step 3

Fit LED winch light to winch cradle. Run wire between winch cradle and bar. Secure to cradle using cable ties.



**RUN WIRE THROUGH THIS OPENING
AND SECURE AT THIS POINT WITH
CABLE TIE**

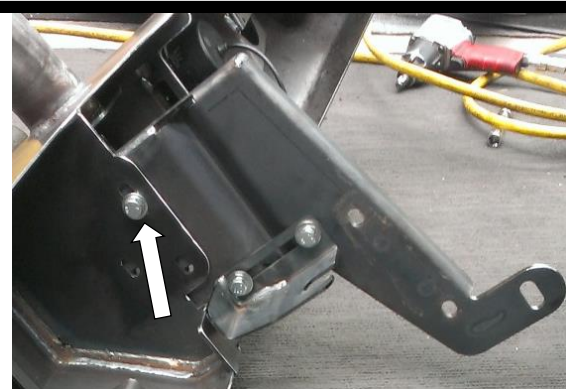
Step 4

It will be easier to fit the bar first and then fit the winch. Before doing so mask the bottom edge of headlight and grille on light coloured vehicles and paint the lower area satin black.



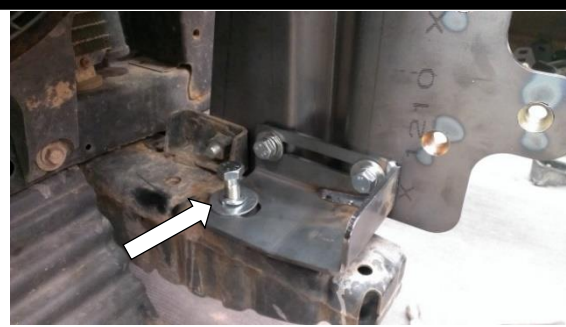
Step 5

Loosely fit impact absorbers to center section using M12 x 1.75 bolts, spring washers and large flat washers. Be sure not to tighten too much as the large washers will lock into the special shaped holes.



Step 6

With the help of another person lift center section onto vehicle and secure using M12 x 1.25 fine pitch bolts, spring washers and large flat washers. The bottom mount hole will require a large flat washer and M12 x 1.25 pitch bolt.



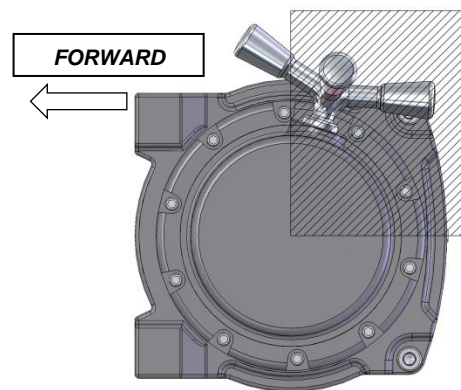
Step 7

With the help of another person adjust the bar so a satisfactory gap and alignment is achieved. It will be easier to lift one side, slightly tighten one bolt, then lift the other side and so on. When done tighten all bolts.



Step 8

This is a view of a winch from the LH side where the clutch handle will sit. Refer to the winch instructions and place the handle anywhere in the shaded area. Fit earth strap to winch at this stage.



Step 9

With the help of another person lift the winch up into position and loosely secure using top holes. Be careful not to lose mounting nuts that sit in the winch. Mount fairlead on lower holes and tighten to winch manufacturers settings when done. Wire the winch and mount the control box.



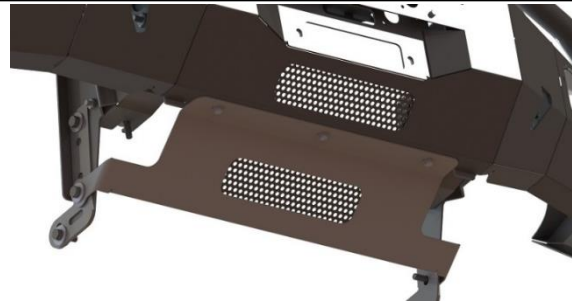
Step 10

It is recommended in all instances that a slim line license plate be fitted for best looks and air flow. If a hawse fairlead is fitted secure the plate as shown. This can also be used if a roller fairlead is fitted but it is recommended that NP-F2-ASM0 flip up kit be fitted to cover the roller fairlead for on road use.



Step 11

Fit stone tray to vehicle using M8 hardware supplied and middle bolts on chassis mounts. Tighten when done.



Step 12

When wiring lights to the vehicle it is recommended to use solder. Use loom that came with fog lights and place switch on a convenient position on dashboard. Wire indicator and parker lights to wires at rear of headlight. Fit light covers using M5 x 10 screws.



Finished Product



Revised: 07/08/2019

***Australia's Best
Off Road Products
Created... Not Cloned***

20 Gateway Drive, Carrum Downs, VIC, 3201

1800 806 952

www.uneek4x4.com.au

