

**UNEK4**  
AUSTRALIA  
OFF ROAD ACCESSORIES

**SKU: GU-RB-ASM5**



## ***Fitting Instructions***

***GU Nissan Patrol Y61 1998-2015***

***Rear Bar***

***Australia's Best Off Road Products  
Created... Not Cloned***

# Contents

---

<b>WHY UNEEK</b>	3
<b>IMPORTANT INFORMATION</b>	4
<b>COMPONENTS AND PARTS</b>	5
<b>STEP 1</b>	9
<b>STEP 2</b>	9
<b>STEP 3</b>	9
<b>STEP 4</b>	9
<b>STEP 5</b>	10
<b>STEP 6</b>	10
<b>STEP 7</b>	11
<b>STEP 8</b>	11
<b>STEP 9</b>	12
<b>STEP 10</b>	12
<b>STEP 11</b>	12
<b>STEP 12</b>	13
<b>STEP 13</b>	13
<b>STEP 14</b>	13
<b>STEP 15</b>	13
<b>STEP 16</b>	14
<b>STEP 17</b>	14
<b>STEP 18</b>	14
<b>STEP 19</b>	15
<b>STEP 20</b>	15
<b>STEP 21</b>	15
<b>STEP 22</b>	16
<b>STEP 23</b>	16
<b>STEP 24</b>	16
<b>STEP 25</b>	17
<b>STEP 26</b>	17
<b>STEP 27</b>	17
<b>STEP 28</b>	17
<b>STEP 29</b>	18
<b>STEP 30</b>	18
<b>FINISHED PRODUCT</b>	19

# ***Why Uneek***

---

## ***Australian Designed and Built***

All our products are designed and manufactured right here in Australia, allowing us to have better lead times and better quality control than companies manufacturing overseas. By supporting us you're supporting to grow the Australian economy and our brand.

## ***Uneek Styling***

We do not design our bars to look the same across the vehicle range. We fully develop our own product to individually suit each vehicle. We take time in designing from scratch and then test all our bars to comply with all relevant ADRs and Australian Standards.

## ***Lightweight Through Smart Engineering***

Having a steel bar doesn't mean you have to add more weight than is required to the front of your vehicle. Our engineering practises ensure we have the right protection, designed the right way to ensure protection is at its maximum and weights at its minimum.

## ***Proven Off Road***

We take our products out and test them right here in the heart of our country in our Australian conditions so we know our products can withstand anything you throw at them.

## ***Increased Approach Angles***

Our bars are designed to give you the best advantage while off road, with increased approach angles means you can tackle those tough and steep angles better than you could with the original setup or other alternatives.

## ***Warranty***

Uneek 4x4 back itself as Australia's leading steel bull bar manufacturer. This is why we provide you with the best steel bar warranty in Australia - 5 years.

# Important Information

---



## PLEASE READ BEFORE INSTALLATION.

- This product must be installed exactly as per these instructions using only hardware supplied.
- Take a few moments to read instructions thoroughly before beginning work.
- In the event of damage to any bar component please contact Uneek 4x4 in regards to repair/replacement of components.
- Do not use this product for any vehicle make or model other than that specified on these instructions.
- This product and its fixings must not be modified in any way unless stated in these fitting instructions.
- The installation of this product is recommended for trained personnel.
- These instructions are correct at time of publication. Uneek 4x4 cannot be held responsible for the impact of any changes subsequently made by the vehicle manufacturer.
- During installation it is the duty of the installer to check correct operation/clearances of all components.
- **Supplied tow points are designed as tow points only. Use in a recovery operation will be at operator's risk.**
- Installation time:2-3 hours
- Optional right hand and left hand swing outs are available to carry tyres or jerry cans.
- This tyre carrier is designed to carry the weight and size of a 35" tyre, carry larger tyres at your own risk.
- Always maintain the utmost care when using a hi-lift jack on any vehicle
- Uneek 4x4 generally covers the LH stub axle with peel off plastic paint which you can peel off when you purchase the LH swing out.



### EYE & EAR PROTECTION REQUIRED



### DRILLING REQUIRED



### TWO PERSON LIFT REQUIRED



### TORQUE SETTING



### CUTTING OR GRINDING REQUIRED

---

#### FASTENER TORQUE SETTINGS:

M6 – 9Nm (4lb ft)

M8 – 22Nm (16lb ft)

M10 – 44Nm (32lb ft)

M12 – 77Nm (57lb ft)

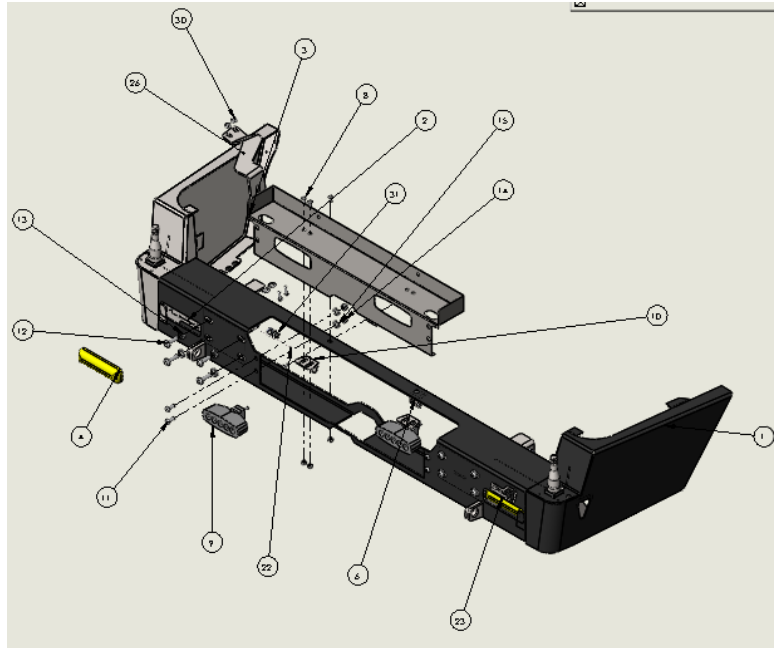
TOOLS REQUIRED: BASIC TOOL KIT WITH SOCKETS, SPANNERS AND HEX KEYS, POWER DRILL, 12MM AND 13MM DRILL BIT

GENERAL PURPOSE GREASE, RUBBER Mallet, Soldering iron with Solder.

# Components and parts

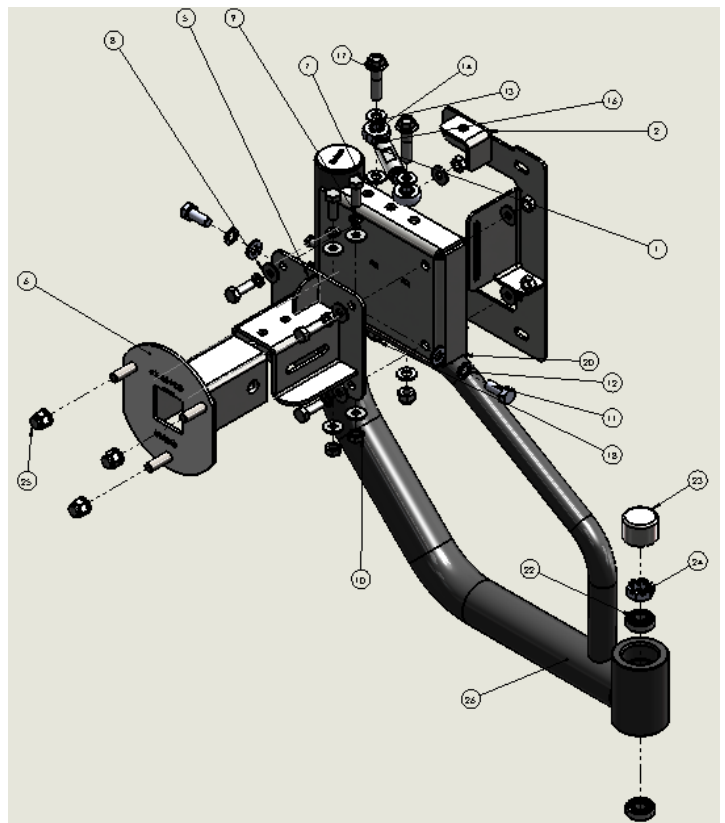
## REAR BUMPER

ITEM NO.	PART NUMBER	DESCRIPTION	QTY
1	GU-RB-ASM1-REVA		1
2	03-0043	Lamp mount gu rear	2
3	04-0031	centre step GU rear	1
4	93812	Narva Rear stop/tail lamp	2
5	JK-RB-B-17	STEP TIE IN	1
6	JK-RB-B-17R	STEP TIE IN	1
7	M8 NYLOC	NYLOC SELF LOCKING NUT, ST STL A2 ISO	8
8	M8X16 BHCS	M8X16 BUTTON HEAD CAP SCREW Z/P	8
9	SM-811A-CW	LED flood light 15W	2
10	JK-RB-B-14	LED LIGHT MOUNT TABS	2
11	M10X25 BHCS	M10X25 BUTTON HEAD CAP SCREW Z/P	4
12	M12X40 BHCS	M12X40 BHCS	8
13	M12 HD WASHER	M12 HD WASHER	8
14	M10 NYLOC	NYLOC SELF LOCKING NUT	4
15	M10 HD WASHER	M10 HD WASHER Z/P	4
16	M5X15 PSCREW	M5 X 15 PH SCREW	10
17	M12X50X1.25	GR 8.8, Z/P	4
18	M12 SW	M12 SPRING WASHER	4
19	M12 FW	M12 FLAT WASHER	10
20	M12X40X1.75	M12 X 40 X 1.75 BOLT	4
21	M12 SPRING WASHER	M12 SPRING WASHER	4
22	M12 NUT PLATE	M12 NUT PLATE	2
23	U4X4-LOGO PLATE- 1	LOGO PLATE-1	1
24	M5 NYLOCK NUT	M5 NYLOCK NUT	4
25	SHIPPER 1950 X 720 X 380	CARTON 1950 X 720 X 380	1
26	03-0257L	GU rear bar support under	1
27	03-0257R	GU rear bar support under	1
28	M8 FW X 22	FLAT WASHER 8MM LARGE	4
29	M8X25 BHCS	M8X25 BUTTON HEAD CAP SCREW	4
30	M8 FN	FLANGE NUT M8	4
31	M12 NUT	M12 X 1.75 NUT	2



## Optional: Right Hand Swing Away

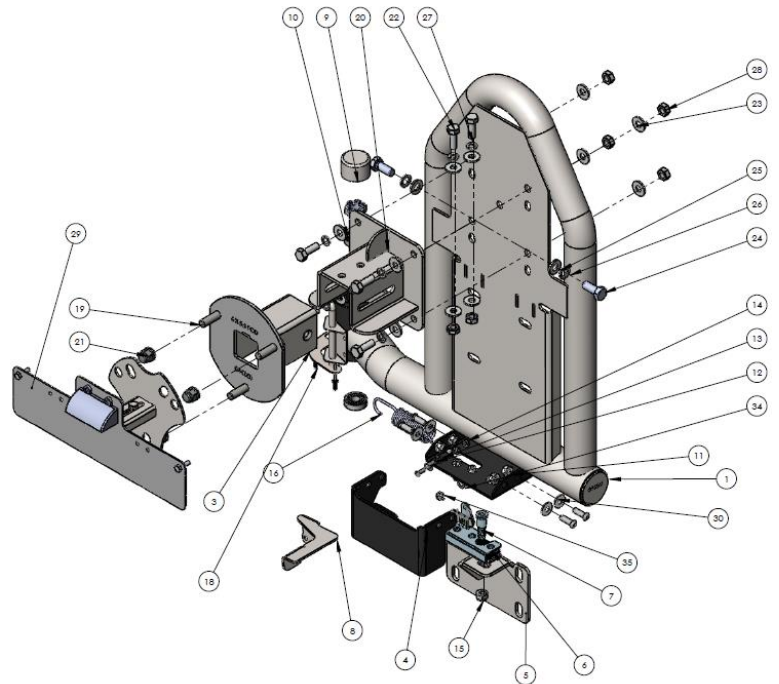
ITEM NO.	PART NUMBER	DESCRIPTION	QTY
1	JK-RB-TC-23	TIE ROD ADJUSTER	1
2	03-0044	Door mount GU rear	1
3	JK-RB-23	SOFT STOP	1
4	M12 Rod end LH	Rod end LH M12	1
5	03-0090	BRACKET ASSY TYRE MOUNT	1
6	GU-RB-ASM4	TYRE MOUNT	1
7	M10 X 30 BOLT		6
8	M10FWX25	M10 FLAT WASHER X 25MM WIDE	12
9	M10SW	M10 SPRING WASHER	6
10	M10X1.5N	M10 X 1.5 NUT	6
11	M12X30		2
12	M12 SW	M12 SPRING WASHER	2
13	M12 FW	M12 FLAT WASHER	8
14	M12 Rod end RH	Rod end RH M12	1
15	M12 JAM NUT RH	M12 JAM NUT	1
16	M12 JAM NUT LH	M12 JAM NUT REVERSE THREAD	1
17	M12-1.75 x 50	M12x50-8.8 HEX BOLT Z/P	2
18	M12 NYLOC	NYLOC SELF LOCKING NUT, ST STL A2 ISO	2
19	M8 X 30	M8 X 30 HEX BOLT 8.8 Z/P	2
20	M8 NYLOC	NYLOC SELF LOCKING NUT, ST STL A2 ISO	2
21	M8 FW X 22	FLAT WASHER 8MM LARGE	2
22	HUB BEARING	BEARING ARM HUB	2
23	HUB CAP	HUB CAP AND SPLIT PIN	1
24	CASTLE NUT	CASTLE NUT	1
25	M12x1.25 wheel nut	M12 x 1.25 Wheel nut	3
26	GU-RB-ASM2	GU patrol tyre carrier	1



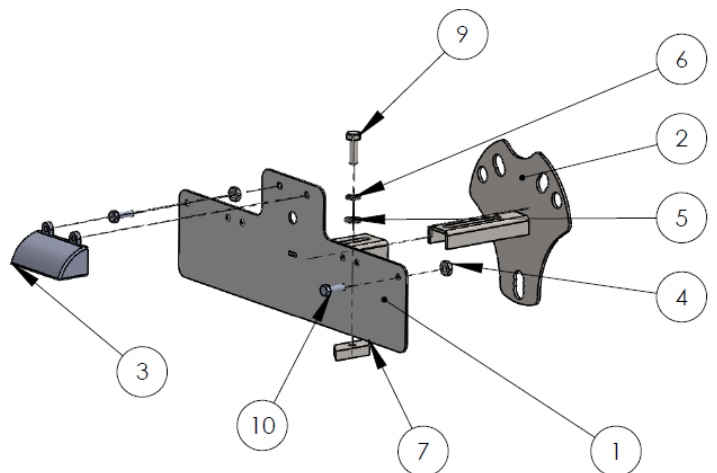
# Components and parts

## Optional: LH Tyre Carrier

ITEM NO.	PART NUMBER	DESCRIPTION	QTY.
1	GU-RB-ASM10	GU patrol lh spare	1
2	41010	DEE BEE SMALL	1
3	04-0163	SCUFF PLATE GU	1
4	03-0048	latch cover	1
5	03-0046	Striker mount	1
6	1-400-R	EBERHARD SLAM LATCH RH	1
7	2T-400-52	Eberhard striker pin	1
8	03-0050	actuator	1
9	HUB CAP	HUB CAP AND SPLIT PIN	1
10	TRAILER BEARINGS	TRAILER BEARINGS	2
11	M8 FLANGE NUT	M8 FLANGE NUT	4
12	M5X15 PSCREW	M5 X 15 PH SCREW	2
13	m5 washer	m5 washer	2
14	M5 NYLOCK NUT	M5 NYLOCK NUT	3
15	M10 NYLOC	NYLOC SELF LOCKING NUT	1
16	Extension Spring	extension spring	1
17	M6X25 BHCS	M6X25 BUTTON HEAD CAP SCREW S/S	1
18	.125 Rivet	3/8 RIVET	2
19	GU-RB-ASM4	TYRE MOUNT	1
20	03-0090	BRACKET ASSY TYRE MOUNT	1
21	M12x 1.25 wheel nut	M12 x 1.25 Wheel nut	3
22	M10 X 30 BOLT	M10 X 30 HEX ZP 8.8	6
23	M10FWX25	M10 FLAT WASHER X 25MM WIDE	12
24	M12X30	M12 X 30 HEX HT	2
25	M12 FW	M12 FLAT WASHER	2
26	M12 SW	M12 SPRING WASHER	2
27	M10SW	M10 SPRING WASHER	6
28	M10X1.5N	M10 X 1.5 NUT	6
29	JK-RB-ASM10	NUMBER PLATE RELOCATION	1
30	M8 FLAT WASHER	M8 FLAT WASHER	4
31	CASTLE NUT	CASTLE NUT	1
32	M8X25 BHCS	M8X25 BUTTON HEAD CAP SCREW Z/P	4
33	M6 x 30 HEX BOLT Z/P	M6 X 30 HEX BOLT Z/P	3
34	m6 washer	m6 washer	5
35	M6 FLANGE NUT	M6 FLANGE NUT	4



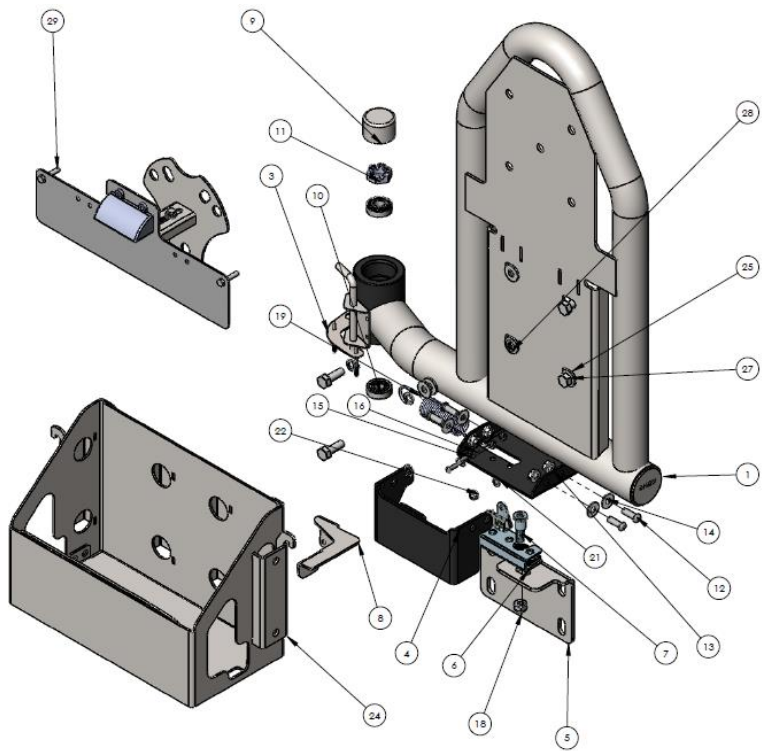
ITEM NO.	PART NUMBER	Description	QTY.
1	JK-RB-ASM7	NUMBER PLATE MOUNT	1
2	JK-RB-ASM6	NUMBER PLATE MOUNT	1
3	BR25B	LED NUMBER PLATE LIGHT	1
4	M6 NYLOCK NUT	M6 NYLOCK NUT	2
5	M8 WASHER	M8 WASHER	1
6	M8 SPRING WASHER	M8 SPRING WASHER	1
7	ALSTOM NUT M8	ALSTOM M8 NUT	1
8	SL7	380 X 280 X 230	1
9	M8X25	BOLT M8 X 25	1
10	M6X20	BOLT M6 X 20	2



# Components and parts

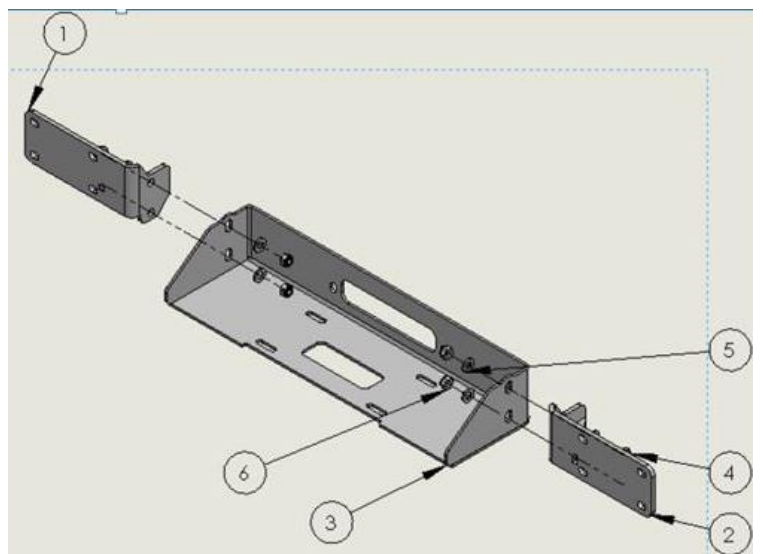
## Optional: Left Hand Single Jerry Can Swing Away

ITEM NO.	PART NUMBER	DESCRIPTION	QTY.
1	GU-RB-ASM10	GU patrol lh spare	1
2	41010	DEE BEE SMALL	1
3	04-0163	SCUFF PLATE GU	1
4	03-0048	latch cover	1
5	03-0046	Striker mount	1
6	1-400-R	EBERHARD SLAM LATCH RH	1
7	2T-400-52	Eberhard striker pin	1
8	03-0050	actuator	1
9	HUB CAP	HUB CAP AND SPLIT PIN	1
10	TRAILER BEARINGS	TRAILER BEARINGS	2
11	CASTLE NUT	CASTLE NUT	1
12	M8X25 BHCS	M8X25 BUTTON HEAD CAP SCREW Z/P	4
13	M8 FLANGE NUT	M8 FLANGE NUT	4
14	M5X15 PSCREW	M5 X 15 PH SCREW	2
15	m5 washer	m5 washer	2
16	M5 NYLOCK NUT	M5 NYLOCK NUT	3
17	M10 NYLOC	NYLOC SELF LOCKING NUT	1
18	Extension Spring	extension spring	1
19	M6X25 BHCS	M6X25 BUTTON HEAD CAP SCREW S/S	1
20	.125 Rivet	3/8 RIVET	2
21	JC-RB-ASM0	JERRY CAN REAR BAR FULL KIT	1
22	M10FWX25	M10 FLAT WASHER X 25MM WIDE	8
23	M10X1.5N	M10 X 1.5 NUT	4
24	M10 X 30 BOLT	M10 X 30 HEX ZP 8.8	4
25	M10SW	M10 SPRING WASHER	4
26	JK-RB-ASM10	NUMBER PLATE RELOCATION	1
27	M8 FLAT WASHER	M8 FLAT WASHER	4
28	M6 FLANGE NUT	M6 FLANGE NUT	4
29	m6 washer	m6 washer	5
30	M6 x 30 HEX BOLT Z/P	M6 X 30 HEX BOLT Z/P	3



## Optional: Rear Winch Mount

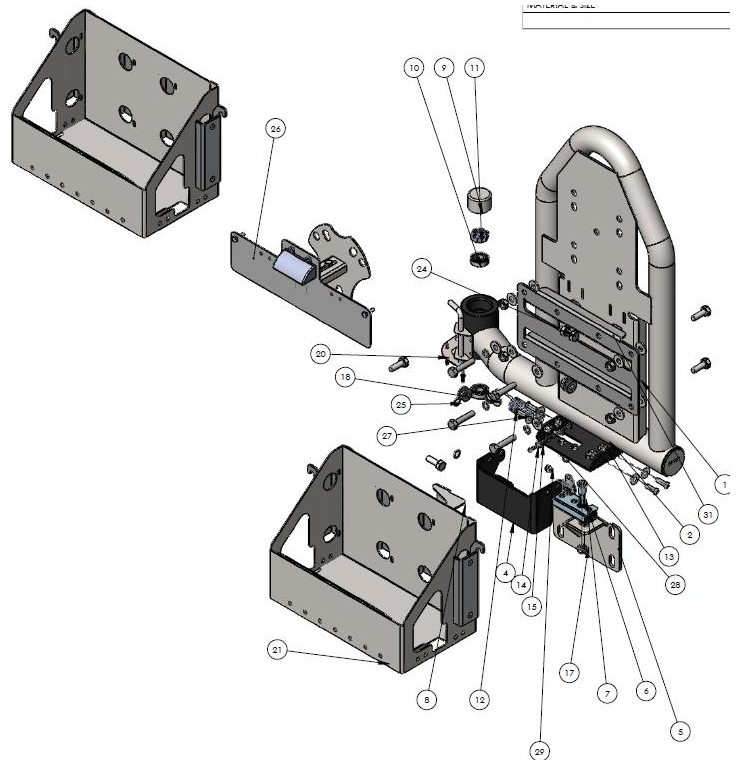
ITEM NO.	PART NUMBER	DESCRIPTION	QTY
1	JK-RB-B-ASM2L	WINCH CRADLE SUPPORT BRKT LH	1
2	JK-RB-B-ASM2R	WINCH CRADLE SUPPORT BRKT RH	1
3	JK-RB-B-7	WINCH MOUNT	1
4	M12X40X1.75	M12 X 40 BOLT	4
5	M12HD WASH	M12 HD WASHER	8
6	M12 NYLOC	M12 NYLOC NUT	8
7	M12X40 BHCS	M12 X 40 BUTTON HEAD CAPS	8



# Components and parts

## Left Hand Dual Jerry Can Holder

ITEM NO.	PART NUMBER	DESCRIPTION	with no support bracket/QTY.
1	GU-RB-ASM10	GU patrol lh spare	1
2	41010	DEE BEE SMALL	1
3	04-0163	SCUFF PLATE GU	1
4	03-0048	latch cover	1
5	03-0046	Striker mount	1
6	1-400-R	EBERHARD SLAM LATCH RH	1
7	2T-400-52	Eberhard striker pin	1
8	03-0050	actuator	1
9	HUB CAP	HUB CAP AND SPLIT PIN	1
10	TRAILER BEARINGS	TRAILER BEARINGS	2
11	CASTLE NUT	CASTLE NUT	1
12	M8X25 BHCS	M8X25 BUTION HEAD CAP SCREW Z/P	4
13	M8 FLANGE NUT	M8 FLANGE NUT	4
14	M5X15 PSCREW	M5 X 15 PH SCREW	2
15	m5 washer	m5 washer	2
16	M5 NYLOCK NUT	M5 NYLOCK NUT	3
17	M10 NYLOC	NYLOC SELF LOCKING NUT	1
18	Extension Spring	extension spring	1
19	M6X25 BHCS	M6X25 BUTION HEAD CAP SCREW S/S	1
20	.125 Rivet	3/8 RIVET	2
21	JC-RB-ASM0	JERRY CAN REAR BAR FULL KIT	2
22	M10FWX25	M10 FLAT WASHER X 25MM WIDE	20
23	M10X1.5N	M10 X 1.5 NUT	10
24	M10 X 30 BOLT	M10 X 30 HEX ZP 8.8	6
25	M10SW	M10 SPRING WASHER	10
26	JK-RB-ASM10	NUMBER PLATE RELOCATION	1
27	M8 FLAT WASHER	M8 FLAT WASHER	4
28	m6 washer	m6 washer	5
29	M6 FLANGE NUT	M6 FLANGE NUT	4
30	M10X50X1.5	BOLT M10 X 40	4
31	03-0623	jerry can double converter plate	1
32	M6 x 30 HEX BOLT Z/P	M6 X 30 HEX BOLT Z/P	3





## Step 1

Remove factory bumper and spare tyre including factory tyre carrier.



## Step 2

First thing to do is to fit both indicator lights to the bar with shown indicator bracket. To get access behind the lights you need to pry out the lens with a screwdriver and this allows access to the screws. Once the wires have been fed through the bracket using m5 hardware, fit to the bumper.



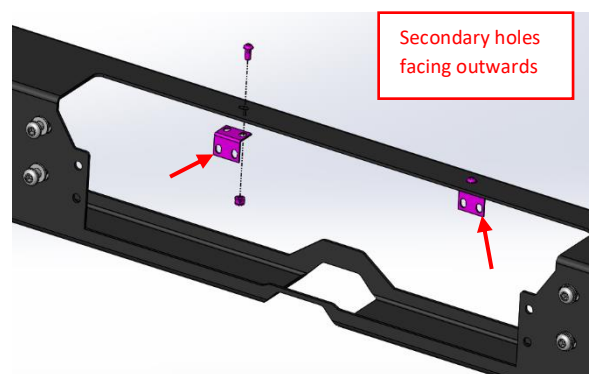
## Step 3

Series 4 and later vehicles will require the center tow point protrusion to be cut off. Remove the entire protruding sheet metal section and grind back the welds then cover with paint.

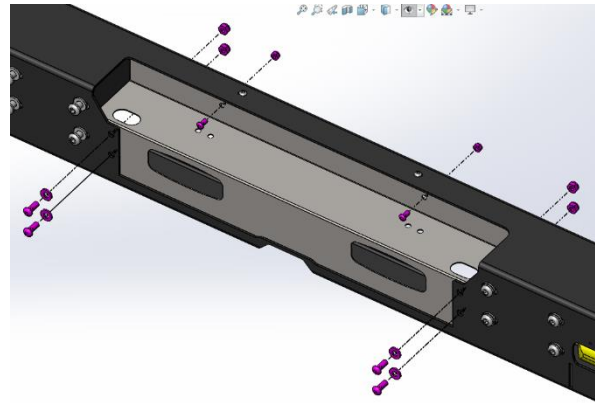


## Step 4

If fitting the rear stainless step (instead of rear winch mount) you will need to use the "step tie in brackets". "Step tie in brackets" are to be loosely fastened onto the bar with secondary hole facing outward from the centre of the vehicle, M8 Button head cap screw and M8 nyloc nut.

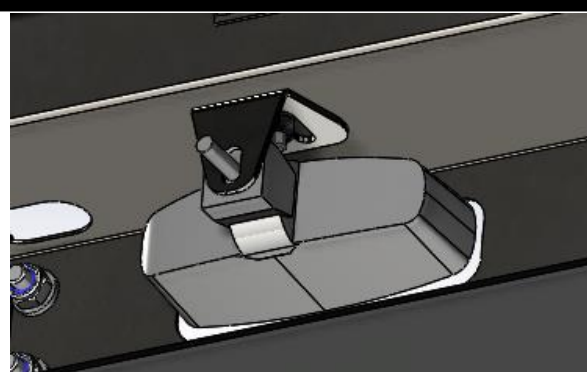


Insert step and loosely fasten step to “step tie in bracket” using M8 button head and M8 nyloc. Adjust step and secure step to rear bar with M10 bolt, washer and nyloc nut. Tighten all previously installed M8 hardware.



## Step 5

Next fit the rear reverse lights with light mount brackets and the same hardware as the step tie in. Finally secure the step to the inside of the bumper with an M10 x 25 button head cap screw on the front and washer with nyloc on the inside.



## Step 6

Depending on your tow bar fitted you may need to drill a hole to suit on the lower edge of the chassis as shown on the underside of the chassis. To mark this hole fit the bumper on to the vehicle and mark from underneath the chassis and drill out to 13mm. Some tow bars already have a hole in this spot. Once the hole is drilled fit the nut plate.



## Step 7

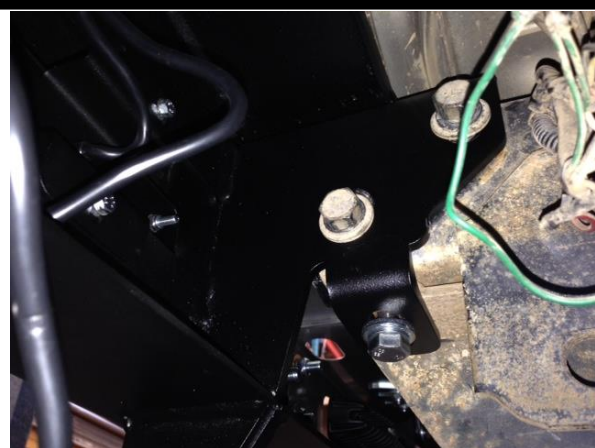
Fit nut plate inside the chassis on both ends. Note nut plate may look different. If a long narrow tang is fitted on nut plate have this sticking out of the chassis and break off tang after fitting bumper.



## Step 8

Fit new bumper on to chassis with the help of a friend and use M12 bolts provided to secure. You may need to run a tap through the chassis nuts that may be rusted over time.

The RH side will lift up slightly after the tyre carrier is fitted so you may need to space leave the RH side a little lower at this stage to compensate.



## Step 9

Wire in your new tail/stop/indicator lights into the existing wiring circuit.

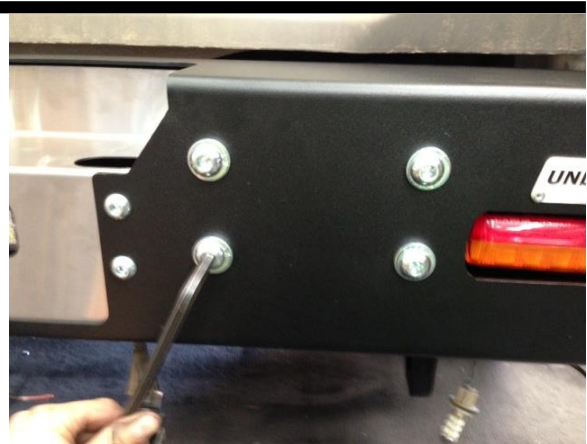
Best practice is to strip wires back and solder them to the new wires.

Wire in your new reverse lights into your reverse light circuit.



## Step 10

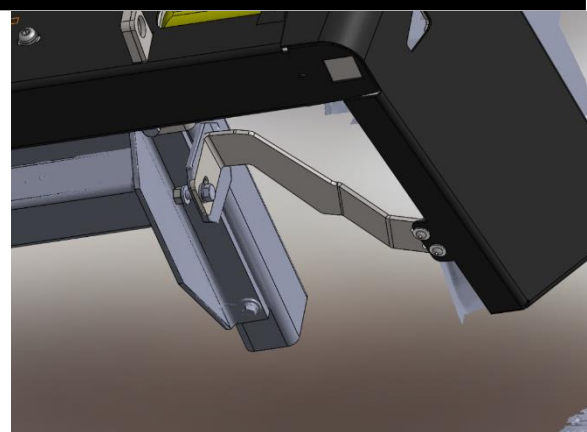
Fit M12 x 40 button head cap screws in through the front of the bar. These bolts are used hold the rear winch mount if used. If rear winch mount is not being used these bolts are simply there to cover the holes.



## Step 11

Fit rear support on LH and RH side with 2 M8 button head cap screws and washers on the bottom and M8 flange nuts on top for the outside edge, then use M12 x 40 bolt with washers and nut through chassis panel as shown.

Refit your factory mud flaps on to the bumper and you're now finished with the bumper.



## Step 12

Optional RH tyre carrier instructions:

Using factory bolts fit the door mount bracket

Leave bolts just nipped up not torque yet.



## Step 13

Fit tie rod with M12 hardware with 2 washers under rod end head and loosely fit plastic door stop.



## Step 14

With the RH tyre carrier you first need to install the seal with the rubber lip facing up then grease up the large tapered roller bearing and push it on the stub axle. Any general purpose grease is ok to use.



## Step 15

Next with the help of a friend lift the tyre carrier on to the stub axle then put the small tapered roller bearing on (after being greased) followed by the large washer then torque down the castle nut to a level which has a firm resistance when pushing the tyre carrier. Secure with cotter pin.



## Step 16

Install the cap with a rubber mallet.



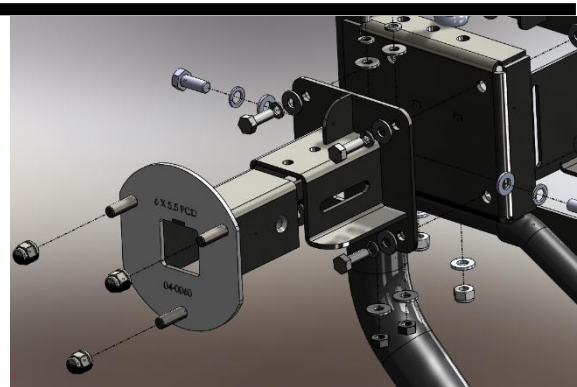
## Step 17

Now it's time to secure the tyre carrier to the rear door with the tie rod as the link. You may need to adjust the position of the door mount and the tie rod length. Also adjust the height of the plastic soft stop. Open the door all the way to ensure no binding. Then aim to have the tyre carrier held firmly against the door but not too tight. Over time you will need to adjust the tie rod to ensure a firm hold against the door. The tie rod is designed to push the door open during normal operation and hold the tyre carrier closed, no vertical load is applied to the door.



## Step 18

Next is to fit the tyre mount. Bolt the bracket tyre mount assembly in place and torque M10x30 bolts with spring washer and flat washers either side. Fit the tyre insert and loosely secure with 2 M12x 30 bolts and spring washer and flat washer.



## Step 19

You next need to put the tyre on the carrier and push the tyre back as far as it can go. The idea for the bottom of the tyre to rest against the tyre carrier itself. Mark this position on the top of the tyre mount as shown with the arrow to the right. Then move your mark 5mm further back towards the car to ensure the tyre is forced hard on to the tyre carrier when installed. Drill out these holes with 12mm drill and fit M10x30 bolts with spring washer's flat washers and nuts. Torque all bolts.



## Step 20

Wire reverse lights in to vehicle circuit. Wire stop/tail lamps into circuit. Refer to Narva lights wiring diagram for which wires operate what.



## Step 21

Fit tyre on tyre carrier with supplied wheel nuts and operate tyre carrier to ensure all motions are good with no binding and adjust if required.



## Step 22

If fitting a rear winch you will leave out the stainless steel step and fit the left hand and right hand winch brackets with the M12 x 40 button head cap screws. Use the M12 hex bolts to secure the winch cradle to the support brackets and torque up. The winch needs to be mounted to the cradle before the cradle is put on to the bumper. You will also need to rotate the winch gear box so the free spool lever is clear of the rear door opening up. Run the cables for the winch and mount the control box in a spot that will not interfere with the door operation.



## Step 23

Follow these instructions if fitting the LH swing away.

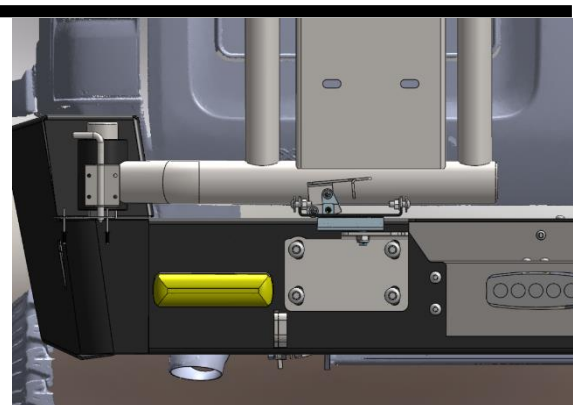
Fit the arm on the bumper with bearings the same as the RH side.

Note, rest latch pin in the upper position for normal operation and drop it in the hole to secure the arm open.



## Step 24

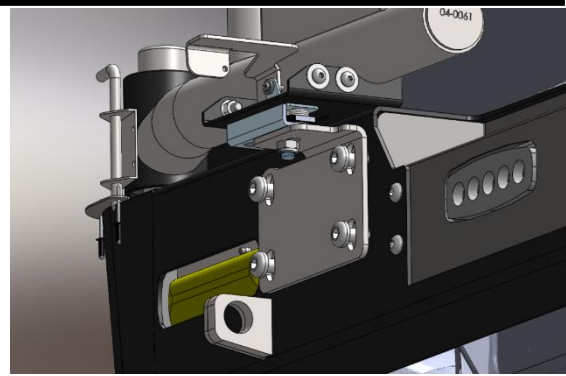
Use M12 button head cap screws to hold striker pin plate in position.





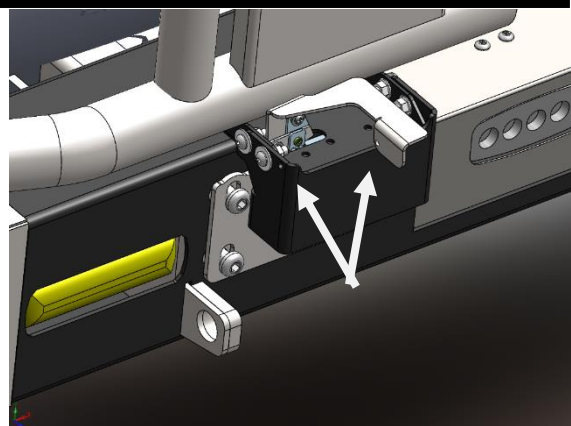
## Step 25

Fit striker pin finger tight and leave M12 button head cap screws loose at this point. Fit latch to swing arm with M6 hardware. Swing arm into closed position to line up the latch. Raise/lower striker pin plate and move pin left or right until there is a clean opening and closing feeling. Torque all bolts once that is achieved.



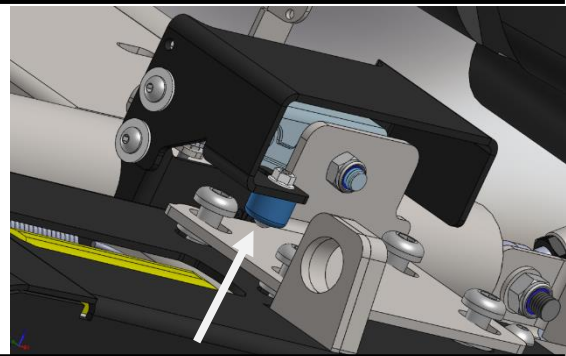
## Step 26

Fit latch cover and actuation lever. Fit spring from latch to hole in cover shown by arrows.



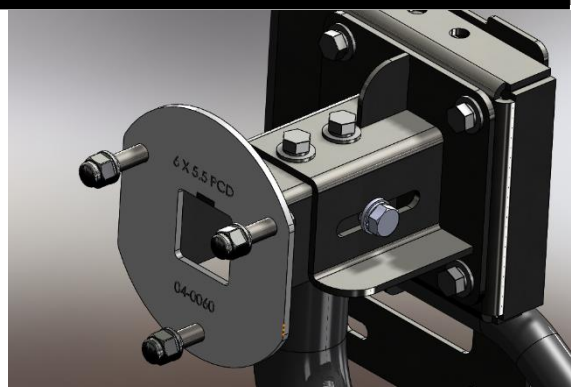
## Step 27

Fit rubber stopper with M6 button head cap screw so that it compresses when fully closed. You may need to add washers to ship out the stopper to get good compression to prevent rattling.



## Step 28

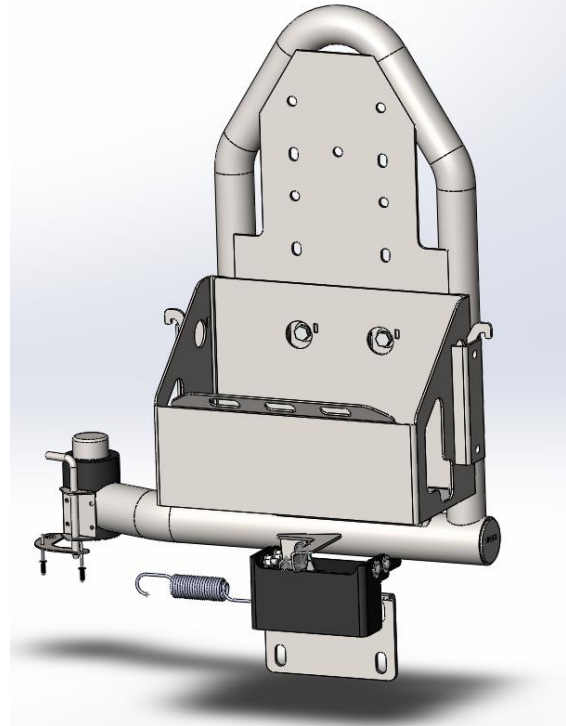
If fitting spare tyre on the LH side follow the same steps as before.



---

## Step 29

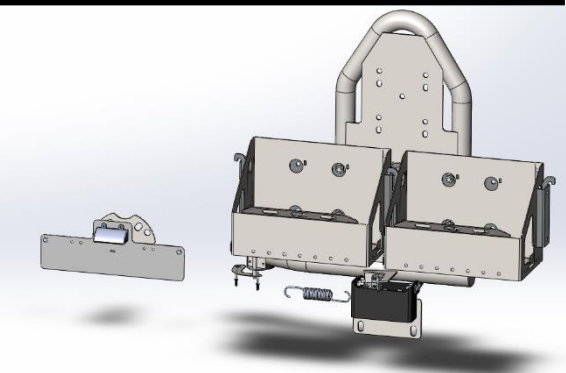
If fitting single jerry can holder in high version insert hooks into the back plate and bolt holder to the swing arm using M10 hardware.



---

## Step 30

If fitting dual jerry can holders hook jerry cans together than hook them on to the swing arm converter plate then to the swing arm. Secure jerry cans to each other and to arm using M10 hardware, and to converter plate, then converter plate to the arm.



# ***Finished Product***

---



Revised: 04/09/2020

***Australia's Best  
Off Road Products  
Created... Not Cloned***

20 Gateway Drive, Carrum Downs, VIC, 3201

1800 806 952

[www.uneek4x4.com.au](http://www.uneek4x4.com.au)

