

UNEK4
A U S T R A L I A
OFF ROAD ACCESSORIES

SKU: NN-FB-21CW-ASM0



Fitting Instructions

***Nissan Navara NP300 2021 on
CRAWLER Bull Bar***

***Australia's Best Off Road Products
Created... Not Cloned***

Contents

WHY UNEEK	3
IMPORTANT INFORMATION	4
COMPONENTS AND PARTS	5
DISMANTLING INSTRUCTIONS	7
STEP 1	7
STEP 2	7
STEP 3	7
STEP 4	8
STEP 5	8
STEP 6	8
STEP 7	9
STEP 8	9
STEP 10	10
STEP 11	10
STEP 12	10
STEP 13	11
STEP 14	11
STEP 15	11
STEP 16	12
STEP 17	12
STEP 18	13
STEP 19	13
FINISHED PRODUCT	14

Why Uneek

Australian Designed and Built

All our products are designed and manufactured right here in Australia, allowing us to have better lead times and better quality control than companies manufacturing overseas. By supporting us you're supporting to grow the Australian economy and our brand.

Uneek Styling

We do not design our bars to look the same across the vehicle range. We fully develop our own product to individually suit each vehicle. We take time in designing from scratch and then test all our bars to comply with all relevant ADRs and Australian Standards.

Lightweight Through Smart Engineering

Having a steel bar doesn't mean you have to add more weight than is required to the front of your vehicle. Our engineering practises ensure we have the right protection, designed the right way to ensure protection is at its maximum and weights at its minimum.

Proven Off Road

We take our products out and test them right here in the heart of our country in our Australian conditions so we know our products can withstand anything you throw at them.

Increased Approach Angles

Our bars are designed to give you the best advantage while off road, with increased approach angles means you can tackle those tough and steep angles better than you could with the original setup or other alternatives.

Warranty

Uneek 4x4 back itself as Australia's leading steel bull bar manufacturer. This is why we provide you with the best steel bar warranty in Australia - 5 years.

Important Information



PLEASE READ BEFORE INSTALLATION

- When installed in accordance with these instructions, the front protection bar does not affect the operation of the vehicles SRS airbags.
- This product must be installed exactly as per these instructions using only hardware supplied.
- Take a few moments to read instructions thoroughly before beginning work.
- In the event of damage to any bar component please contact Uneek 4x4 in regards to repair/replacement of components.
- Do not use this product for any vehicle make or model other than that specified on these instructions.
- Do not remove labels from this product.
- This product and its fixings must not be modified in any way unless stated in these fitting instructions.
- The installation of this product is recommended for trained personnel.
- These instructions are correct at time of publication. Uneek 4x4 cannot be held responsible for the impact of any changes subsequently made by the vehicle manufacturer.
- During installation it is the duty of the installer to check correct operation/clearances of all components.
- Supplied tow points are designed as tow points only. Use in a recovery operation will be at operator's risk.
- Installation time: 4-5 hours.
- Vehicle specific notes: A flip up license plate kit may be required. Optional Narva
- 90862 license plate light.



EYE & EAR PROTECTION REQUIRED



DRILLING REQUIRED



TWO PERSON LIFT REQUIRED



TORQUE SETTING



CUTTING OR GRINDING REQUIRED

FASTENER TORQUE SETTINGS:

M6 – 9Nm (4lb ft)

M8 – 22Nm (16lb ft)

M10 – 44Nm (32lb ft)

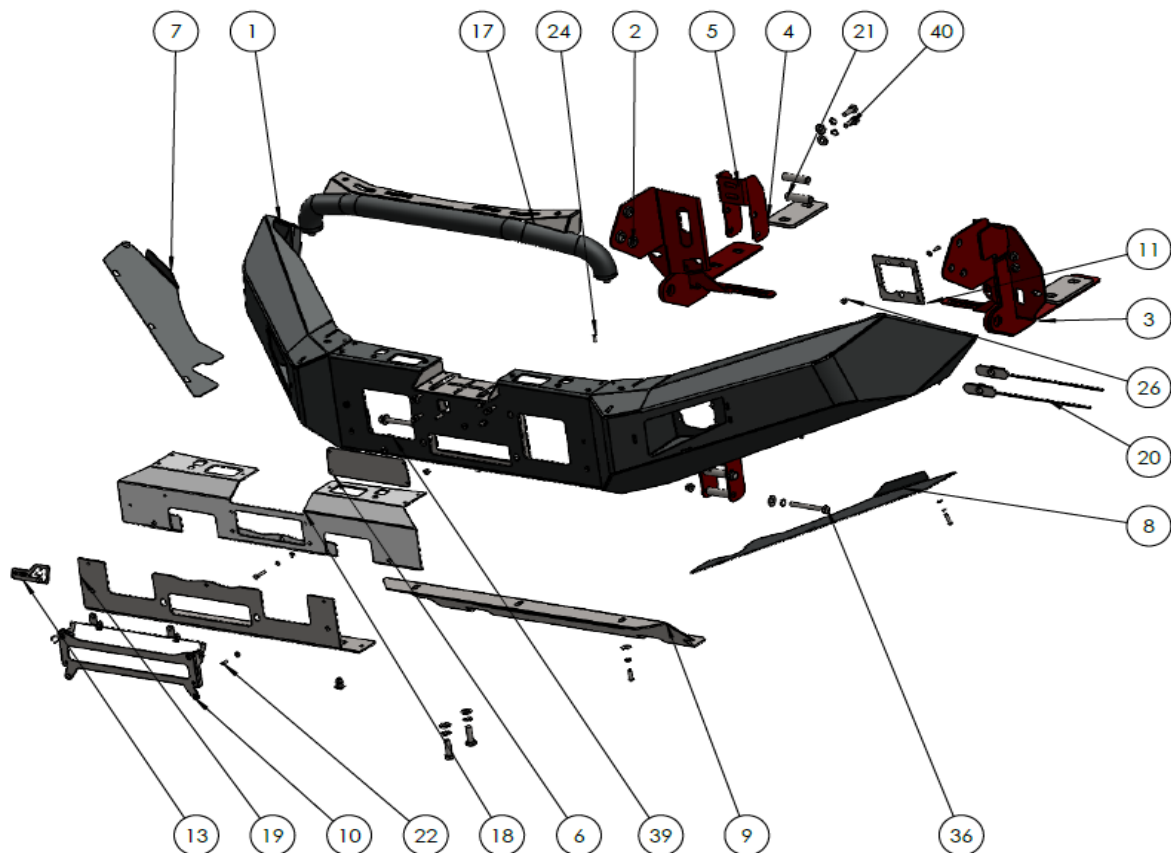
M12 – 77Nm (57lb ft)

TOOLS REQUIRED:

BASIC TOOL KIT: Soldering iron or electrical in-line connectors. 18mm drill bit

Male and female spade terminals.

Components and parts



MAIN PARTS

ITEM NO.	PART NUMBER	DESCRIPTION	QTY.
1	NN-FB-21CW-ASM1	WELDED ASSY NISSAN NP300	1
2	03-0901R	BRACKET IMPACT ASSY NP300 CENTURY	1
3	03-0901L	BRACKET IMPACT ASSY NP300 CENTURY	1
4	04-0242	PLATE PACKER NP300	2
5	03-0903	NP 300 MY21 MOUNT BRACE	2
6	12-0035	NP300 PLASTIC RADAR RELOCATION COVER	1
7	09-0230R	NP300 MY21 UNDERWING PANNEL RH	1
8	09-0930L	NP300 MY21 UNDERWING PANEL LH	1
9	09-0231	NP300 MY21 BASH PLATE	1
10	WK2-FB-17CE-ASM2	NUMBER PLATE FLIP WK2 2017 ACC	1
11	04-0761L	FOG LIGHT ADAPTER PLATE LH	1
12	04-0761R	FOG LIGHT ADAPTER PLATE RH	1
13	U LOGO PLATE BLACK	LOGO PLATE-1	1
14	09-0229-MS	NP 300 MY21 LOWER CENTRE FACSIA M/S	1
15	09-0228-MS	NP300 MY21 TOP FASCIA PLATE M/S	1

OPTIONAL EXTRAS

ITEM NO.	PART NUMBER	DESCRIPTION	QTY.
16	CARWAY DRL	DRL FOG LIGHT	2
17	FR-FB-PXCRAWLTUBE-ASM0	TUBE KIT RANGER CRAWLER	1
18	09-0228	S/STEEL NP300 MY21 TOP FASCIA PLATE	1
19	09-0229	S/STEEL NP 300 MY21 LOWER CENTRE FACSIA	1

SMALL PARTS KIT

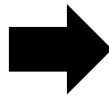
ITEM NO.	PART NUMBER	DESCRIPTION	QTY.
20	04-0252	NUT PLATE ASSY M12 RECOVERY	2
21	05-0162	TUBE SPACER 10NB X 65	4
22	M5X15 PSCREW	M5 X 15 PH SCREW	11
23	M5 WASHER	M5 WASHER	11
24	M5X16 CS	M5 COUNTERSUNK SCREW	14
25	M5 FN	M5 FLANGE NUT	13
26	M6 CN 2MM	CAGE NUT M6X1.7-2.7	8
27	M6X25 BHCS	M6X25 BUTTON HEAD CAP SCREW S/S	8
28	M6 FW	FLAT WASHER 6MM	8
29	M6 SPRING WASHER	M6 SPRING WASHER Z/P	8
30	M6 FN	FLANGE NUT M6	4
31	M6 X 25 CSK	M6 x 25 csk machine screw	3
32	M6 FN(1)	FLANGE NUT M6	3
33	M8X25 BHCS	M8X25 BUTTON HEAD CAP SCREW Z/P	5
34	M8 SW	M8 SPRING WASHER	5
35	M8 FW X 22	FLAT WASHER 8MM LARGE	5
36	M8 FN	FLANGE NUT M8	2
37	M10X1.5X90	M10 X 1.5 X 90MM BOLT	4
38	M10SW	M10 SPRING WASHER	8
39	M10 FN	M10 FLANGE NUT	4
40	M10 FLAT WASHER X 25	M10 FW	8
41	M10X30	M10 X 1.5 X 30MM BOLT	4
42	M12X40X1.25	M12 X 40 X 1.25 BOLT	2
43	M12 SW	M12 SPRING WASHER	8
44	M12 FW	M12 FLAT WASHER	8
45	M12-1.75 X 30	M12X30-8.8 HEX BOLT Z/P	6

Dismantling instructions

Step 1

Using a trim removal tool remove all clips from the plastic cover on top.

Detach the two cables connected to the camera and radar sensor.



Step 2

Unclip the plastic clips around the front grille and separate the front grille from the bumper.



Step 3

Remove bolts on the wheel arch that attaches to the front bumper on both sides.



Step 4



Remove all plastic trims underneath the bumper and detach the bumper from the vehicle.

Step 5



Remove the front bumper brace and the factory tow point on the passenger side.

Retain these bolts.

Step 6

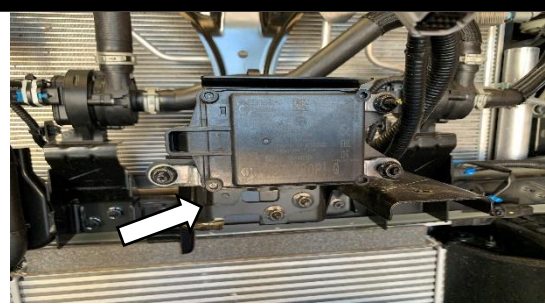
Unbolt the factory bash plate and retain the two bolts on the back.



Step 7

Remove the radar sensor and carefully store in a safe place to be reinstalled on the bulbar later.

Remove and discard the radar mounting bracket.



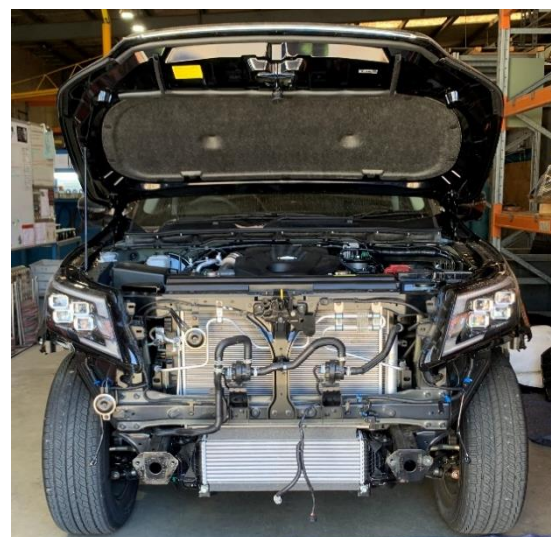
Step 8



Remove and discard the brackets which supports the factory bumper on both sides.

Step 9

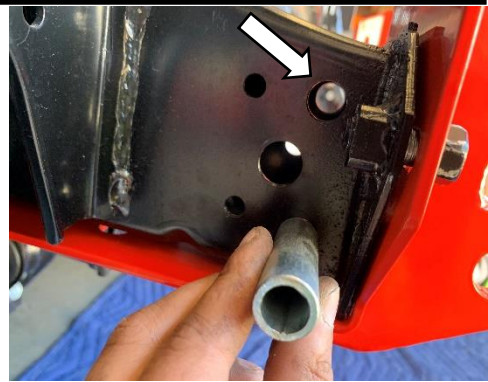
Unscrew the three screws and discard the plastic bumper mounting brackets under the headlight on both sides.



FITTING INSTRUCTIONS

Step 10

Drill out 2 chassis holes to fit the provided tube spacers only to 18mm. De burr and paint each side.



Step 11

Loosely bolt impact absorbers to chassis face using original bolts from steel crash beam. Slide chassis packers between chassis and lower section of mount. On LH side refit using original bolts. On RH side slide M12 nut plates into chassis and secure using M12 x 40 bolts, spring washers and flat washers. Do not tighten yet.

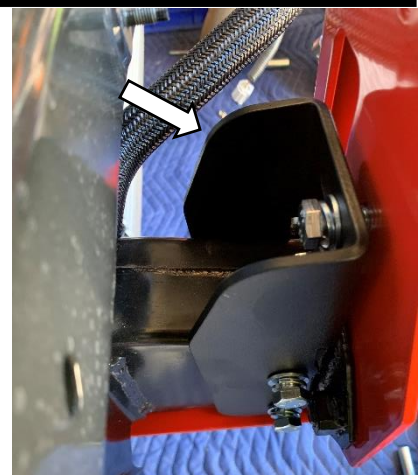


Step 12

Carefully slide the crush tubes into the chassis rail and slide over the chassis brace onto chassis. Secure through chassis using M10 x 90 bolts, spring washers, flat washers and M10 nuts. Secure to impact absorber using M10 x 30 bolts, spring washers and flat washers. Tighten all chassis mount bolts now.



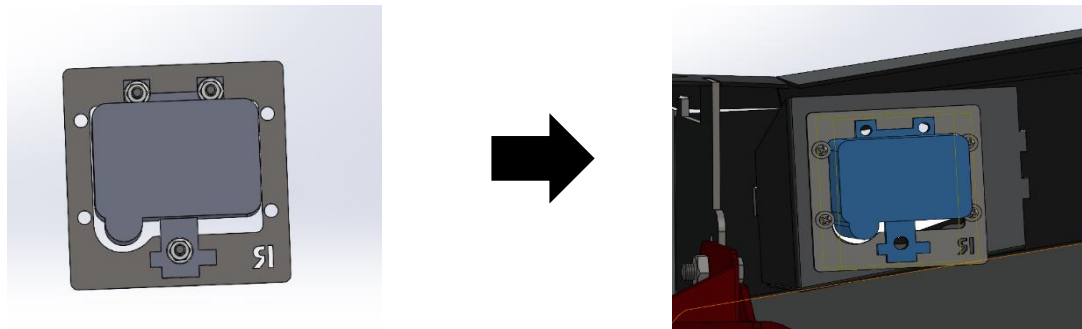
M10-44Nm M12-77Nm



Step 13

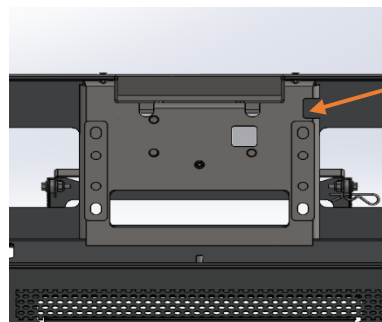
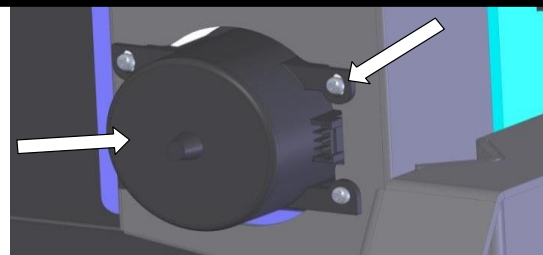
If fitting optional Carway fog lights use M5 x 10 Phillips head screws to bolt them on the bar.

If fitting the factory fog lights bolt the footlights to the provided adapter plate using 3- M6x30 countersunk bolts and flange nuts first and install the plate to the bar.



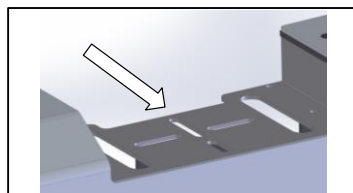
Step 14

Carefully relocate the radar on to the bulbar using M6 countersunk bolts with nuts. Redirect the wire through the access hole on the winch brace and secure it using cable ties



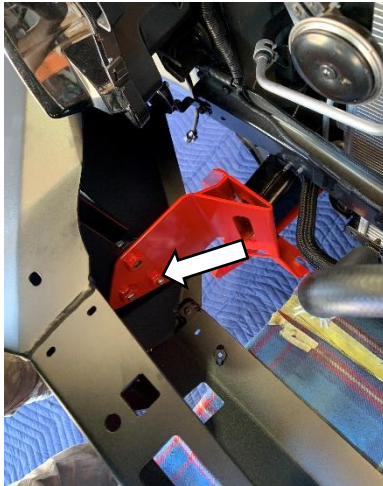
Step 15

Fit the winch to bar making sure the clutch handle is facing forward with the winch mounting points. Fit control box to recess in bar. Before fitting the bar, it is recommended to paint surfaces below the lights etc satin black.

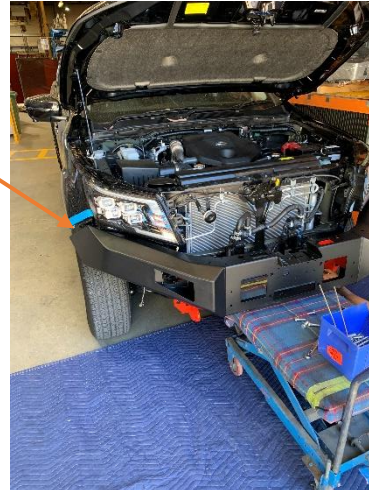


Step 16

With the help of another person lift bar onto vehicle and secure using M12 x 30 bolts, spring washers and large flat washers. Make sure area shown by arrow has a minimum 15mm gap.



15mm gap

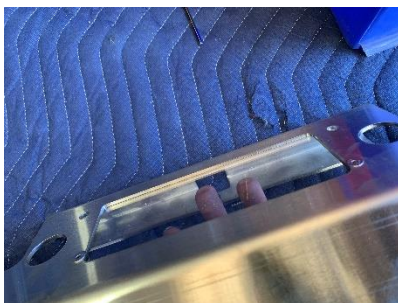


M12-77Nm

Step 17

Using m6 countersunk bolts and nuts fit the plastic cover and then the number plate flip up assembly on the top fascia. Install the bottom fascia with m6 countersunk bolts and nuts to the bar.

Then bolt the top fascia using three screws and nuts in the middle and the rest with countersunk m6 bolts and nuts.



Step 18

Complete all wiring before fitting stone guards. Fit middle stone guard to bar ONLY using M8 button head cap screws and flat washers. Fit original bash plate to vehicle using REAR holes only. Secure middle panel through original bash plate and into slotted hole on chassis bracket using M8 cap screws, flat washers and M8 flange nuts.



M8-22Nm

Step 19

Insert the provided cage nuts on the under-wing panels. Loosely fit outer panels using M8 button head cap screws and flat washers and mark a line on the OEM plastic inner guards on the wheel arch. Remove panel and cut plastic and de burr. Re-fit panel and tighten. Place plastic guard over the lip of the underwing panel.



M8-22Nm

Step 20

Fit the front grille back on the car and trim the grille for better fitment.



Finished Product



***Australias Best
Off Road Products
Created... Not Cloned***

20 Gateway Drive, Carrum Downs, VIC, 3201

1300 806 952

www.uneek4x4.com.au