

**UNEK44**  
AUSTRALIA  
OFF ROAD ACCESSORIES

**SKU: NN-S-NP300-ASM0**



***Fitting Instructions***

***Nissan Navara NP300 2015on***

***Rock Sliders***

***Australia's Best Off Road Products  
Created... Not Cloned***

# **Contents**

---

<b>WHY UNEEK</b>	<b>3</b>
<b>IMPORTANT INFORMATION</b>	<b>4</b>
<b>COMPONENTS AND PARTS</b>	<b>5</b>
<b>STEP 1</b>	<b>6</b>
<b>STEP 2</b>	<b>6</b>
<b>STEP 3</b>	<b>6</b>
<b>STEP 4</b>	<b>6</b>
<b>STEP 5</b>	<b>7</b>
<b>STEP 6</b>	<b>7</b>
<b>STEP 7</b>	<b>7</b>
<b>STEP 8</b>	<b>7</b>
<b>STEP 9</b>	<b>8</b>
<b>STEP 10</b>	<b>8</b>
<b>STEP 11</b>	<b>8</b>
<b>STEP 12</b>	<b>8</b>
<b>FINISHED PRODUCT</b>	<b>9</b>

# ***Why Uneek***

---

## ***Australian Designed and Built***

All our products are designed and manufactured right here in Australia, allowing us to have better lead times and better quality control than companies manufacturing overseas. By supporting us you're supporting to grow the Australian economy and our brand.

## ***Uneek Styling***

We do not design our bars to look the same across the vehicle range. We fully develop our own product to individually suit each vehicle. We take time in designing from scratch and then test all our bars to comply with all relevant ADRs and Australian Standards.

## ***Lightweight Through Smart Engineering***

Having a steel bar doesn't mean you have to add more weight than is required to the front of your vehicle. Our engineering practises ensure we have the right protection, designed the right way to ensure protection is at its maximum and weights at its minimum.

## ***Proven Off Road***

We take our products out and test them right here in the heart of our country in our Australian conditions so we know our products can withstand anything you throw at them.

## ***Increased Approach Angles***

Our bars are designed to give you the best advantage while off road, with increased approach angles means you can tackle those tough and steep angles better than you could with the original setup or other alternatives.

## ***Warranty***

Uneek 4x4 back itself as Australia's leading steel bull bar manufacturer. This is why we provide you with the best steel bar warranty in Australia - 5 years.

# Important Information

---



## PLEASE READ BEFORE INSTALLATION.

- When installed in accordance with these instructions rock sliders do not affect the operation of the vehicles SRS airbags.
- This product must be installed exactly as per these instructions using only hardware supplied.
- Take a few moments to read instructions thoroughly before beginning work.
- In the event of damage to any component please contact Uneek 4x4 in regards to repair/replacement of components.
- Do not use this product for any vehicle make or model other than that specified on these instructions.
- This product and its fixings must not be modified in any way unless stated in these fitting instructions.
- The installation of this product is recommended for trained personnel.
- These instructions are correct at time of publication. Uneek 4x4 cannot be held responsible for the impact of any changes subsequently made by the vehicle manufacturer.
- During installation it is the duty of the installer to check correct operation/clearances of all components.
- Installation time: 2 hours.
- Vehicle specific notes: Product fitment applies to dual cab vehicles with coil spring rear suspension ONLY.



### EYE & EAR PROTECTION REQUIRED



### DRILLING REQUIRED



### TWO PERSON LIFT REQUIRED



### TORQUE SETTING



### CUTTING OR GRINDING REQUIRED

---

#### FASTENER TORQUE SETTINGS:

M6 – 9Nm (4lb ft)

M8 – 22Nm (16lb ft)

M10 – 44Nm (32lb ft)

M12 – 77Nm (57lb ft)

#### TOOLS REQUIRED:

Spanners, socket set.

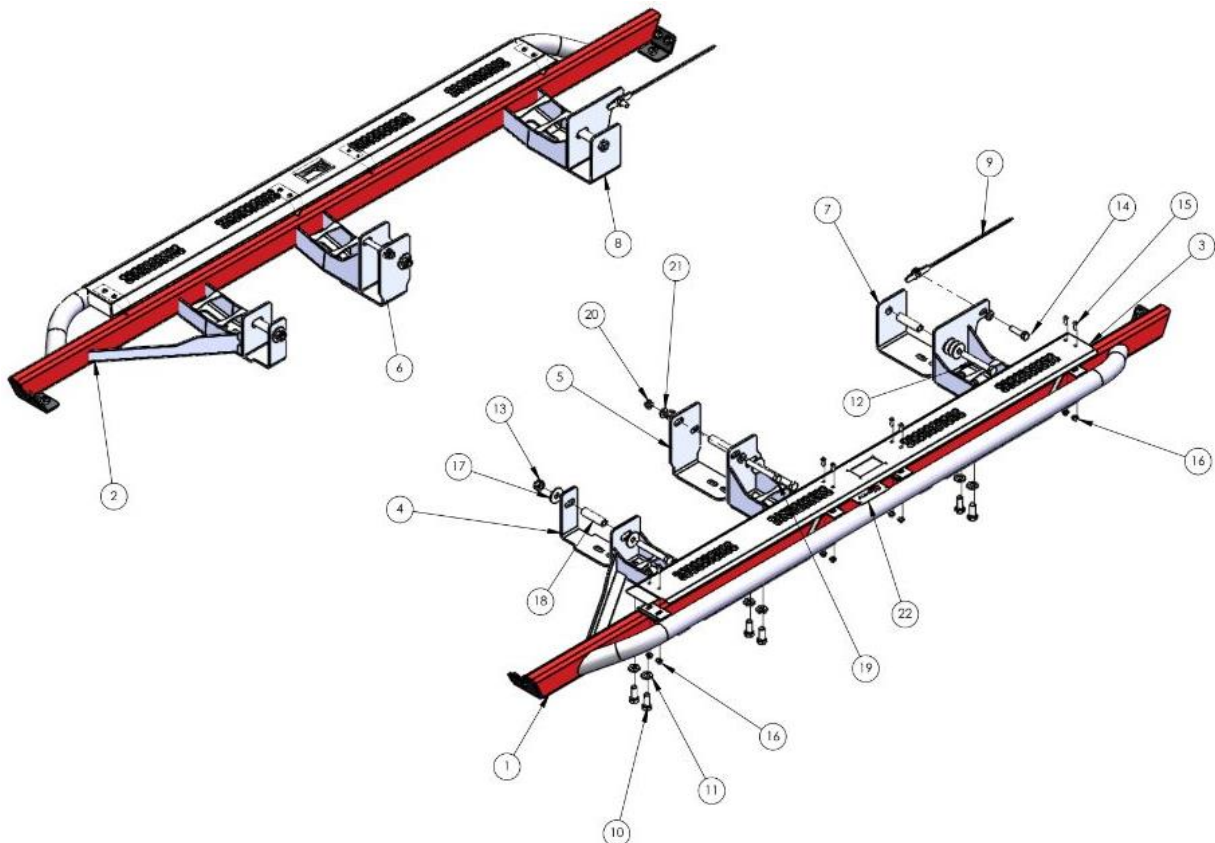
# Components and parts

## MAIN PARTS

ITEM NO.	PART NUMBER	DESCRIPTION	QTY.
1	NN-S-NP300-ASM1L	SLIDER WELDED ASSY NP300	1
2	NN-S-NP300-ASM1R	SLIDER WELDED ASSY NP300	1
3	09-0028	PANEL TREAD SLIDER HILUX 05	2
4	03-0716	Front Chassis Bracket NP300 Navara	2
5	03-0718L	Mid Chassis Bracket NP300 Navara	1
6	03-0718R	Mid Chassis Bracket NP300 Navara	1
7	03-0740L	Navara NP300 Rear Bracket ASSY	1
8	03-0740R	from parent+Navara NP300 Rear Bracket ASSY	1

## SMALL PARTS KIT

ITEM NO.	PART NUMBER	DESCRIPTION	Default/ QTY.
9	04-0113	PLATE NUT ASSY PX RANGER SLIDERS	2
10	M12X30	M12 X 30 HEX HT	12
11	M12 HD WASHER	M12 HD WASHER	12
12	M12X90X1.75	M12 X 90MM X 1.75 BOLT	6
13	M12 Nyloc nut	M12 NYLOC NUT	4
14	M10X40X1.5	BOLT M10 X 40	2
15	M6 x 16 BHCS	M6 X 16 BHCS	16
16	M6 FN	FLANGE NUT M6	16
17	M12 FW X 37	M12 FLAT WASHER LARGE	12
18	05-0162	TUBE SPACER 10NB X 65	6
19	M10x1.5X90	M10 X 1.5 X 90MM BOLT	2
20	M10 NYLOC	NYLOC SELF LOCKING NUT	2
21	M10 HD WASHER	M10 HD WASHER Z/P	6
22	JK-S-10	LOGO PLATE	2



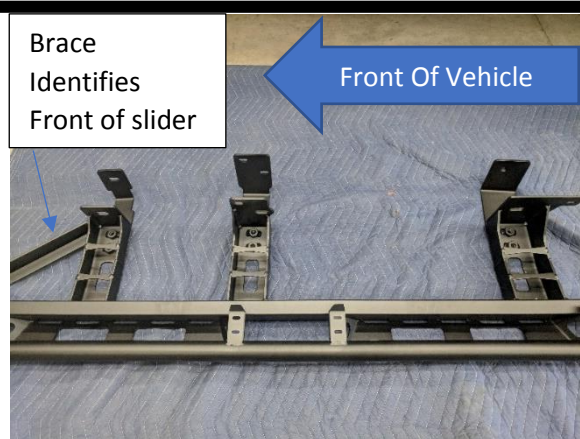
## Step 1

Remove original steps and brackets by removing M8 hardware securing steps to vehicle body.



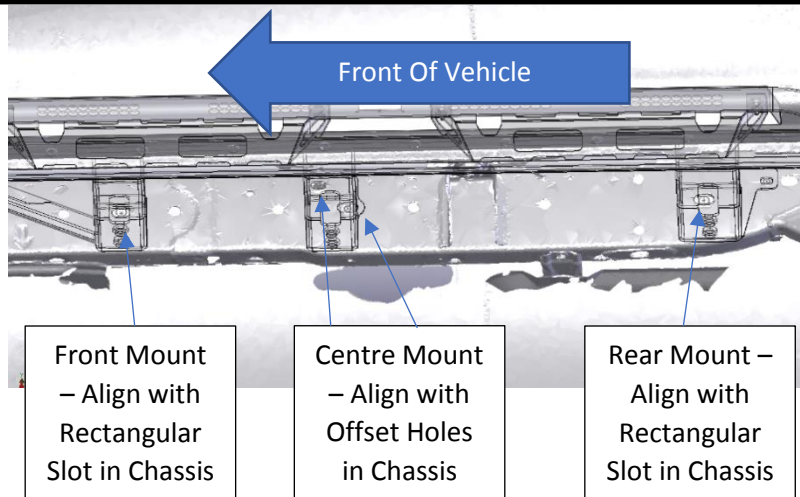
## Step 2

Unpack and lay out sliders beside car. Identify the correct side through the forward brace, which faces toward the front of the vehicle. Identify and lay out the correct brackets for each mount. Check that all threads in root nuts run smoothly.



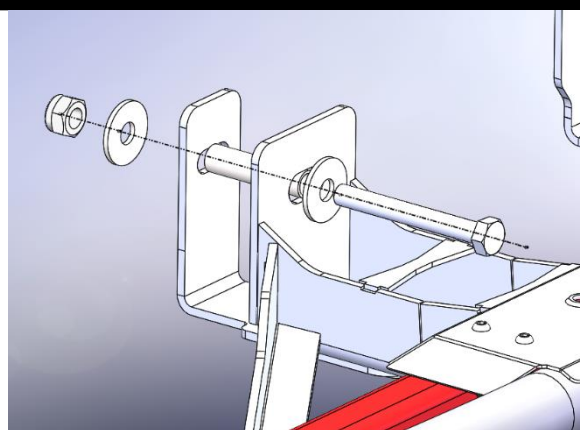
## Step 3

With assistance lift slider up to vehicle and align slots in mounts with features in chassis as shown.



## Step 4

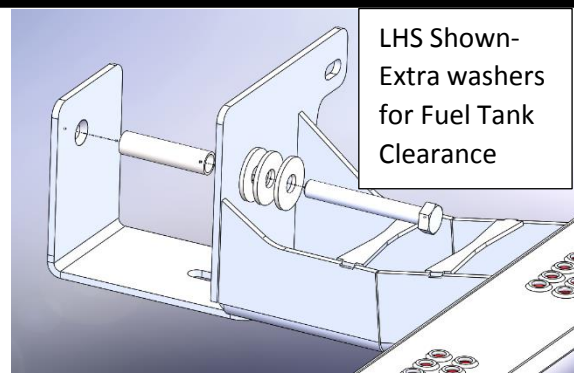
Insert M12X90mm bolt with M12 large washer and crush tube through the slot on the front mount. Secure through the front bolt-on bracket with M12 large washer and M12 Nyloc Nut. Do not tighten at this stage.



## Step 5

Insert M12X90mm bolt with M12 large washer and crush tube through the slot on the rear mount. Manually locate the rear bracket and thread the bolt into the welded root nut. Note that on LHS, 3x M12 Large washers will be needed to avoid the bolt hitting fuel tank when tightened.

Do not tighten at this stage.

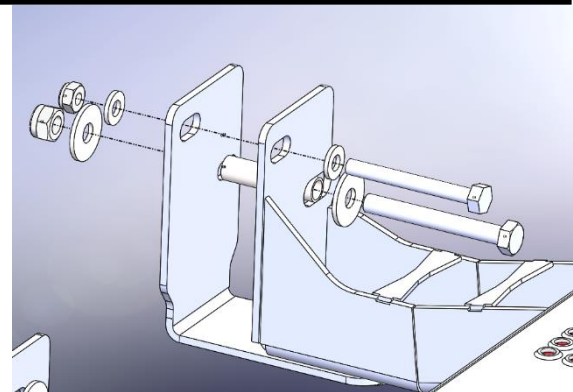


## Step 6

Insert M12X90mm bolt with M12 large washer and crush tube through the lower slot on the center mount.

Insert M10x90mm Bolt and M10 flat washer through the top slot on the center mount.

Secure through the center bolt-on bracket with M12 large washer, M12 Nyloc Nut, M10 washer and M10 Nyloc Nut.



## Step 7

Align slots in bottom of brackets with root nuts in slider mounts. Secure with M12x30 bolts and flat washer.

Do not tighten at this stage.

## Step 8

Insert nut plate through slot in chassis and align with rear bolt slot on rear mount. Secure with M10x40 bolt and flat washer.



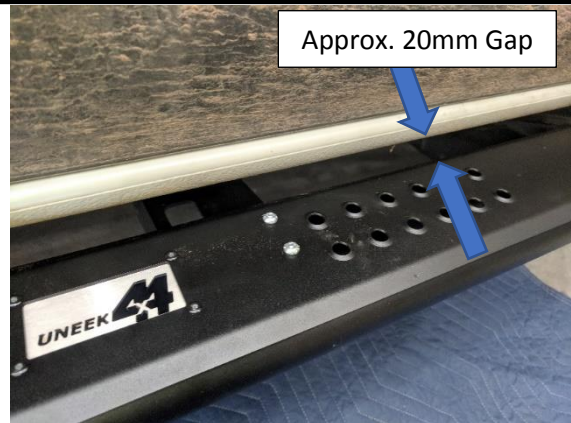
## Step 9

Fit tread plates with M6x16 button head screws and flange nuts.



## Step 10

Position and hold the sliders such that there is approximately 20mm clearance to the vehicle bodywork. With assistance hold in position and tighten and torque all the bolts through the chassis.



M10-44Nm (32lb ft) M12-77Nm(57lb ft)

## Step 11

Once all chassis bolts are tight, tighten and torque all bracket to slider bolts.



M12-77Nm (57lb ft)

## Step 12

Once all bolts are torqued repeat steps 2-11 for the other side of vehicle. Then head out and enjoy your newly protected Nissan Navara!



# Finished Product

---



Revised: 07/08/2019

***Australia's Best  
Off Road Products  
Created... Not Cloned***

20 Gateway Drive, Carrum Downs, VIC, 3201

1800 806 952

[www.uneek4x4.com.au](http://www.uneek4x4.com.au)

