

UNEK4
AUSTRALIA
OFF ROAD ACCESSORIES

SKU: FR-FB-PX2CE-ASM0

SKU: FR-FB-PX2CEC-ASM0



Fitting Instructions

Ford Ranger 2011 - 2017

Commander Bar

***Australia's Best Off Road Products
Created... Not Cloned***

Contents

WHY BUY UNEEK	3
IMPORTANT INFORMATION	4
COMPONENTS AND PARTS	5
COMPONENTS AND PARTS	6
PLEASE NOTE:	7
STEP 1	8
STEP 2	8
STEP 3	8
STEP 4	8
STEP 5	9
STEP 6	9
STEP 7	9
STEP 8	9
STEP 9	9
STEP 10	10
STEP 11	10
STEP 12	10
STEP 13	10
STEP 14	11
STEP 15	11
STEP 16	11
STEP 17	11
STEP 18	12
STEP 19	12
STEP 20	12
STEP 21	13
STEP 22	13
STEP 23	14
STEP 24	14
FINISHED PRODUCT	15

Why Buy Uneek

Australian Designed and Built

All our products are designed and manufactured right here in Australia, allowing us to have better lead times and better quality control than companies manufacturing overseas. By supporting us you're supporting to grow the Australian economy and our brand.

Uneek Styling

We do not design our bars to look the same across the vehicle range. We fully develop our own product to individually suit each vehicle. We take time in designing from scratch and then test all our bars to comply with all relevant ADRs and Australian Standards.

Lightweight Through Smart Engineering

Having a steel bar doesn't mean you have to add more weight than is required to the front of your vehicle. Our engineering practises ensure we have the right protection, designed the right way to ensure protection is at its maximum and weights at its minimum.

Proven Off Road

We take our products out and test them right here in the heart of our country in our Australian conditions so we know our products can withstand anything you throw at them.

Increased Approach Angles

Our bars are designed to give you the best advantage while off road, with increased approach angles means you can tackle those tough and steep angles better than you could with the original setup or other alternatives.

Warranty

Uneek 4x4 back itself as Australia's leading steel bull bar manufacturer. This is why we provide you with the best steel bar warranty in Australia - 5 years.

Important Information



PLEASE READ BEFORE INSTALLATION.

- When installed in accordance with these instructions, the front protection bar does not affect the operation of the vehicles SRS airbags.
- This product must be installed exactly as per these instructions using only hardware supplied.
- Take a few moments to read instructions thoroughly before beginning work.
- In the event of damage to any bar component please contact Uneek 4x4 in regards to repair/replacement of components.
- Do not use this product for any vehicle make or model other than that specified on these instructions.
- Do not remove labels from this product.
- This product and its fixings must not be modified in any way unless stated in these fitting instructions.
- The installation of this product is recommended for trained personnel.
- These instructions are correct at time of publication. Uneek 4x4 cannot be held responsible for the impact of any changes subsequently made by the vehicle manufacturer.
- During installation it is the duty of the installer to check correct operation/clearances of all components.
- Supplied tow points are designed as tow points only. Use in a recovery operation will be at operator's risk.
- Installation time: 4-5 hours.
- Vehicle specific notes: A flip up license plate kit may be required. Optional Narva 90862 license plate light.



EYE & EAR PROTECTION REQUIRED



DRILLING REQUIRED



TWO PERSON LIFT REQUIRED



TORQUE SETTING



CUTTING OR GRINDING REQUIRED

FASTENER TORQUE SETTINGS:

M6 – 9Nm (4lb ft)

M8 – 22Nm (16lb ft)

M10 – 44Nm (32lb ft)

M12 – 77Nm (57lb ft)

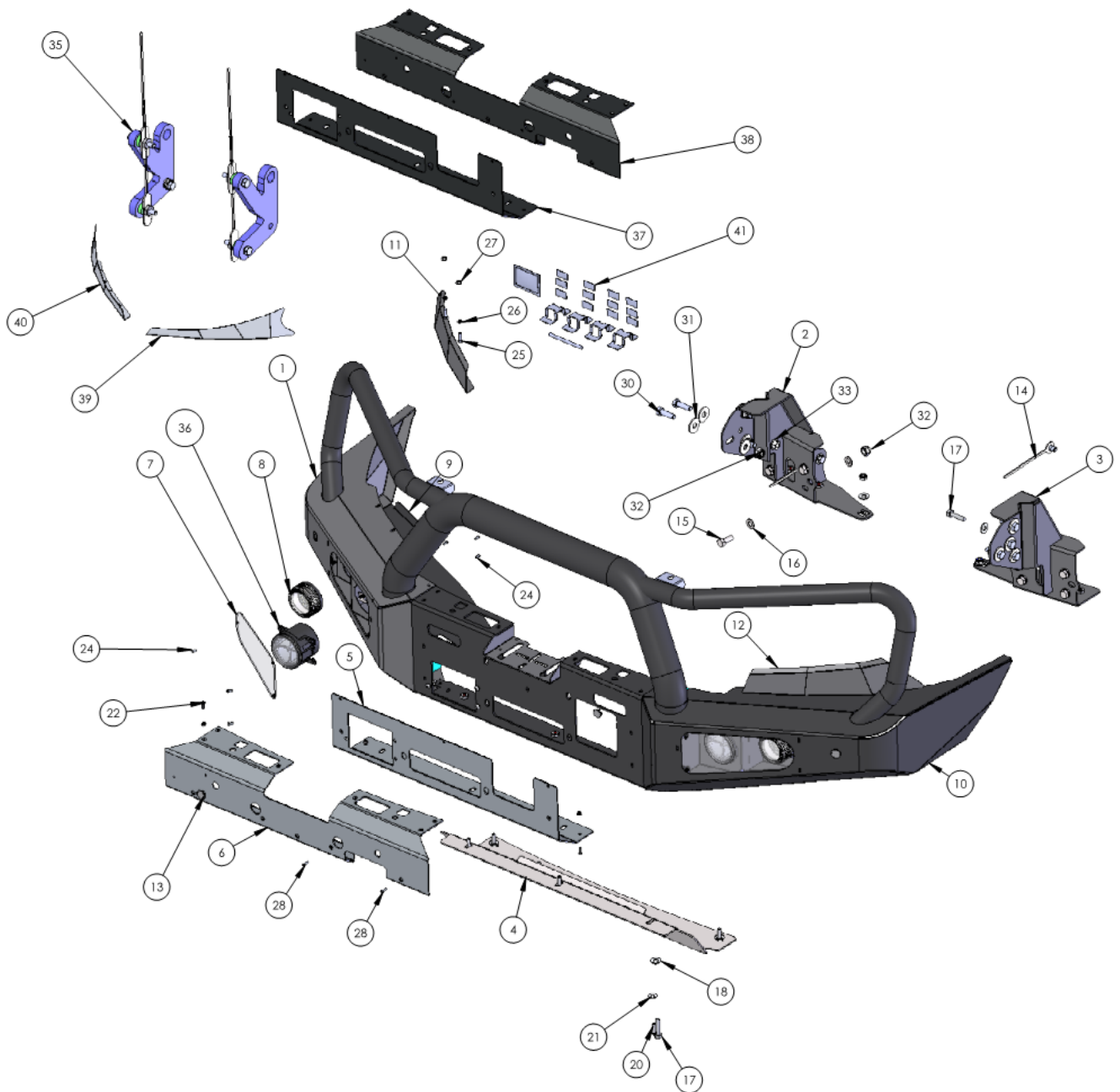
TOOLS REQUIRED:

BASIC TOOL KIT: Soldering iron or electrical in-line connectors.

Male and female spade terminals.

Drill and drill bits up to 12mm.

Components and parts



Components and parts

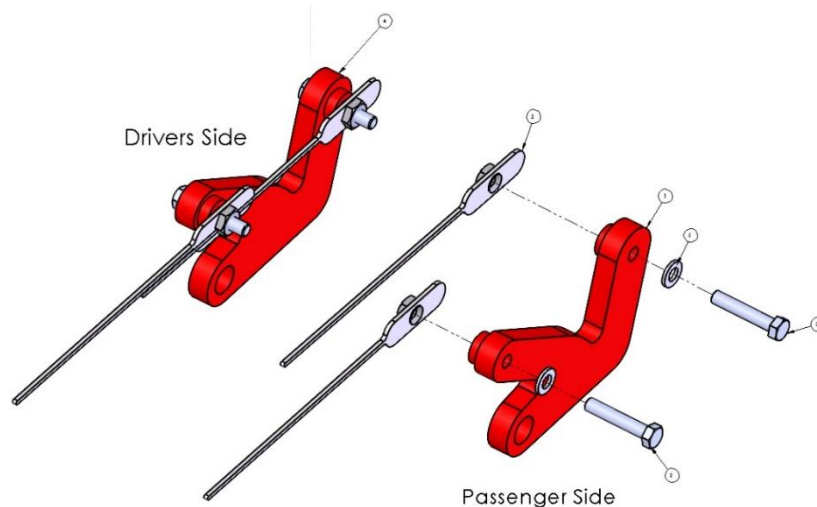
ITEM NO.	PART NUMBER	DESCRIPTION	QTY.
1	FR-FB-PX2CEC-ASM1	RANGER PX2 COMMANDER CLASSIC ASSY	1
2	03-0318R	IMPACT ASSY CRAWLER PX RANGER	1
3	03-0318L	IMPACT ASSY CRAWLER PX RANGER	1
4	09-0110	CENTRE PANEL ASSY PX CENTURY	1
5	09-0102	PANEL MIDDLE CENTURY PX2	1
6	09-0108	PANEL TOP RANGER CRAWLER	1
7	12-0010	COVER PC FOG LIGHT	2
8	AUTO 8 LED	LED INDICATOR/PARKER	2
9	09-0128R	PANEL OUTER COMMANDER PX RANGER	1
10	09-0128L	PANEL OUTER COMMANDER PX RANGER	1
11	03-0326R	BRACKET HEADLIGHT PX RANGER 2	1
12	03-0326L	BRACKET HEADLIGHT PX RANGER 2	1

Optional

ITEM NO.	PART NUMBER	DESCRIPTION	QTY.
35	FR-RP-ASM0	FORD RANGER RECOVERY POINT	1
36	CARWAY DRL	DRL FOG LIGHT	2
37	09-0102-MS	PANEL MIDDLE CENTURY PX2 BLACK MILD STEEL	1
38	09-0106-MS	PANEL BLACK MILD TOP PX2 RANGER	1
39	03-0322L	BRACKET HEADLIGHT CRAWLER PX RANGER	1
40	03-0322R	BRACKET HEADLIGHT PX RANGER	1
41	SENS-BRK-KIT	Universal Sensor Bracket Kit	1

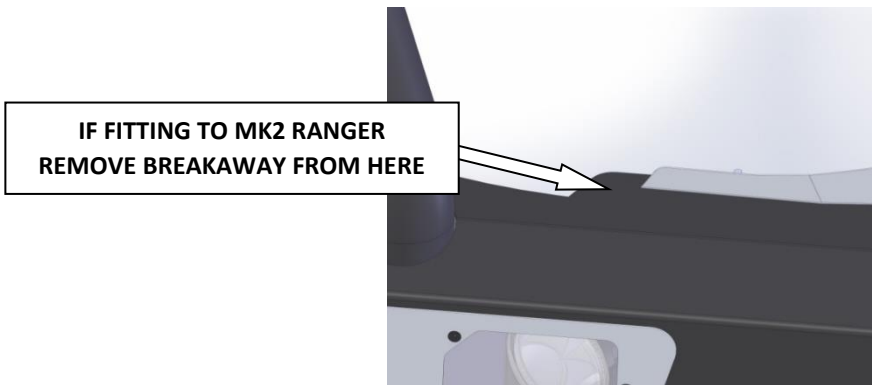
ITEM NO.	PART NUMBER	DESCRIPTION	QTY.
13	SPFM18	Round plastic cap Kelvindale	4
14	04-0086	ASSY M10 ROOT NUT PLATE	2
15	M12X30X1.75	BOLT M12 1.75 PITCH	8
16	M12 FW	M12 FLAT WASHER	16
17	M10X40X1.5	BOLT M10 X 40	4
18	M10FWX25	M10 FLAT WASHER X 25MM WIDE	6
19	M10 NYLOC	NYLOC SELF LOCKING NUT	2
20	M8X25 BHCS	M8X25 BUTTON HEAD CAP SCREW Z/P	16
21	M8 FW X 22	FLAT WASHER 8MM LARGE	13
22	M5X16 CS	M5 COUNTERSUNK SCREW	10
23	M5 FN	M5 FLANGE NUT	13
24	M5X10 PSCREW	M5 X 10 PH SCREW	14
25	M6X20	BOLT M6 X 20	4
26	M6 FW	FLAT WASHER 6MM	4
27	M6 FN	FLANGE NUT M6	4
28	M5X15 PSCREW	M5 X 15 PH SCREW	5
29	M8 FN	FLANGE NUT M8	3
30	M12X40X1.75	M12 X 40 X 1.75 BOLT	8
31	M12 FW X 37	M12 FLAT WASHER LARGE	12
32	M12 Nyloc nut	M12 NYLOC NUT	14
33	M12 X 1.75 FN	M12 FLANGE NUT	2
34	M12 HD WASHER	M12 HD WASHER	2

ITEM NO.	PART NUMBER	Description	QTY.
1	04-0248L	Recovery Plate ASSY Passenger Side	1
2	04-0252	NUT PLATE ASSY M12 RECOVERY	4
3	M12X65X1.75	M12 X 65MM X 1.75 BOLT	4
4	04-0248R	Recovery Plate Drivers Side	1
5	M12 HD WASHER	M12 HD WASHER	4

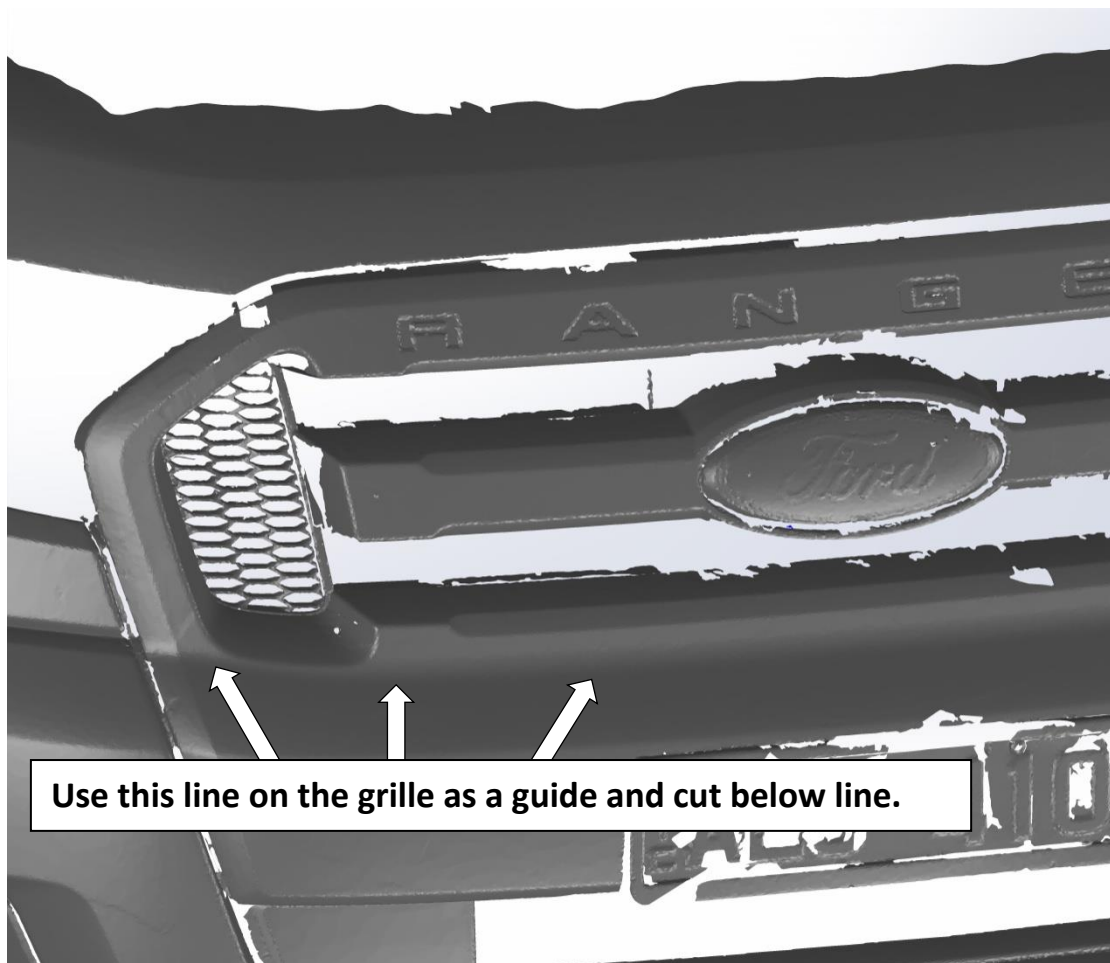


Please note:

Please note: Winch spacer may be required for PX2 depending on winch motor size and ACC Radar Fitment. It is recommended that a slim line number plate be fitted.



Even though these bars do not require a bumper cut it is necessary to cut the grille on the Ranger PX2 version. Mark grille as noted below. The grille can be taken apart in sections via removal of screws behind grille. This is recommended to make cutting easier. De-burr all sharp edges when done



Step 1

Remove plastic panels under bumper, bumper, fog lights if fitted, grille and steel bumper support. Remove plastic bumper mounts from guard sections. Retain bolts from bumper support. Remove front bash plate.



Step 2

If radar is fitted unplug and remove from vehicle. Remove its mounting bracket and remove the studs from the radar unit. If parking sensors are fitted remove from original bar and fit to bullbar using silicone. Place sensor in a horizontal position.



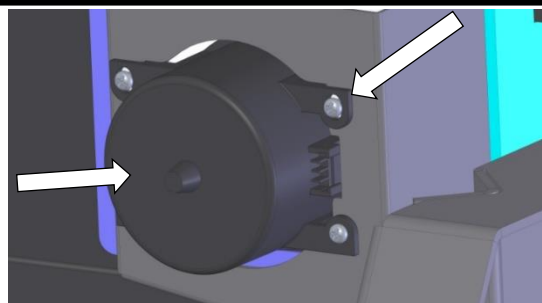
Step 3

Remove any plastic air deflectors near chassis rails. Loosely fit impact absorbers to bar using original M10 bolts and supplied M12 x 40 bolts, two small M12 flat washers per bolt and an M12 Nyloc nut. Place captive nut plate through front of chassis and secure using M10 x 30 bolt, washer and flat washer through side of chassis.



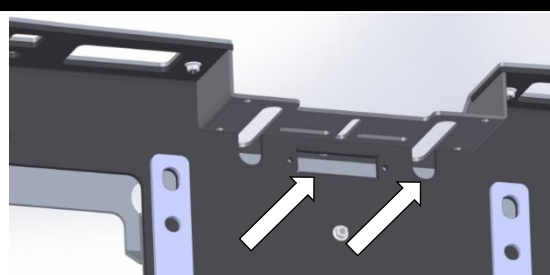
Step 4

Fit supplied fog lights to bar using M5 x 10 Phillips head screws. If the vehicle does not have factory fog lights install the supplied wiring loom.



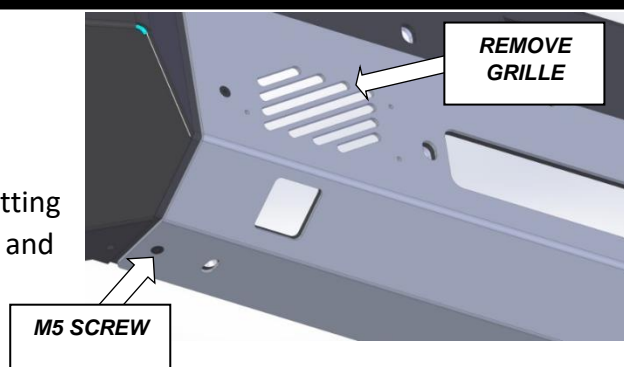
Step 5

Install optional winch light and route cable to either side of bar. Run cable through access (arrow) hole.



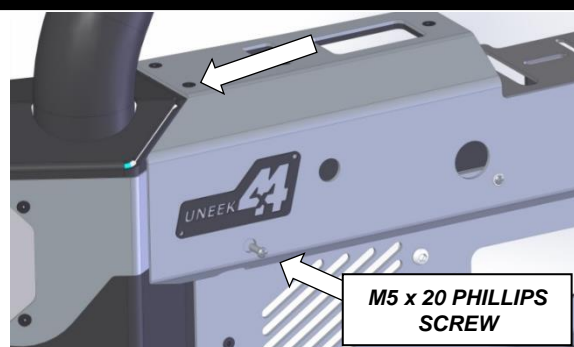
Step 6

Fit lower stainless panel to bar using 4 x M5 countersunk screws and M5 flange nuts. If fitting radar to PX2 Ranger punch out grille section and drill the three holes to 8.5mm.



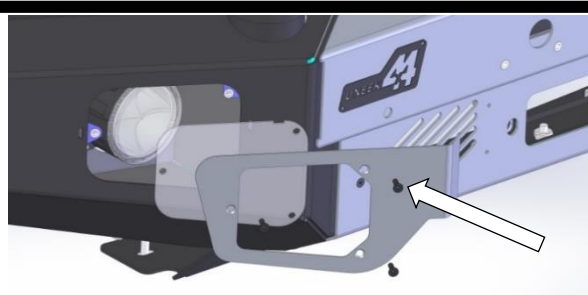
Step 7

Fit upper panel assembly using 6 x M5 countersunk screws and flange nuts and 3 x M5 x 15 Phillips head screws through the front face of panel with flange nuts.



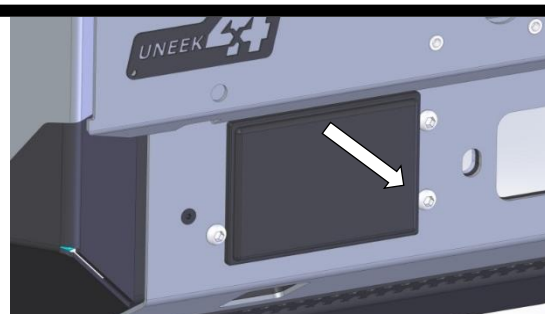
Step 8

Fit clear cover and stainless surround using 3 x M5 x 16 countersink screws for each light. The folded section sits between the stainless centre and wing of bar.



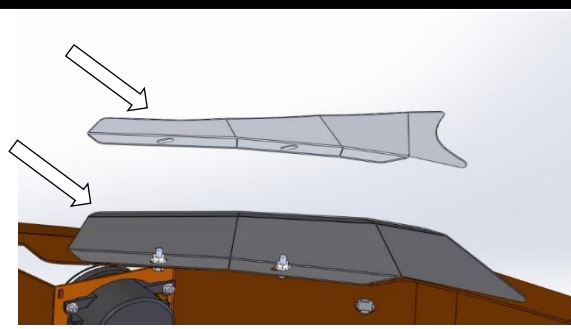
Step 9

Fit radar from behind the bar and secure using M8 button head cap screws and flange nuts.



Step 10

Fit under headlight brackets to wing loosely with M6 x 20 bolts, flat washers and M6 flange nuts. Ranger Mark 2 shown. Note from above parts list drawings there are two types. PX1 and PX2. PX2 is shown.



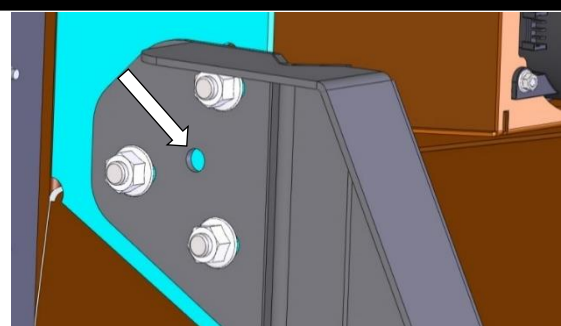
Step 11

Fit the bar to vehicle using M12 x 40 bolts, large flat washers and M12 Nyloc nuts through slotted holes in mounts. Note Small M12 Heavy duty washer will be required for top inside position as large washer will not fit. Adjust bar for an even fit and **no less** than 10mm clearance between guard and top of bar. Tighten bolts just so bar does not move.



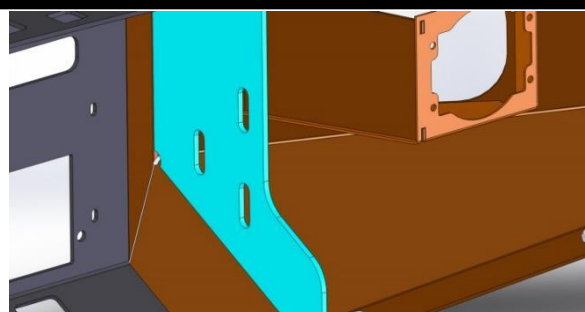
Step 12

When happy with the position of the bar locate the holes in the mounting brackets that are in the middle of all the mounting bolts. Mark this hole with a white marking pen. **Location of bar will be permanent once this pinning hole is used!**



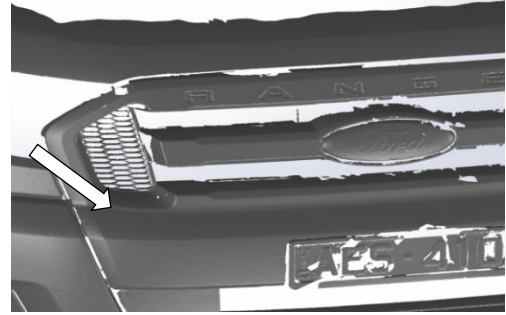
Step 13

Remove bar from vehicle and drill this marked hole out to 12mm.



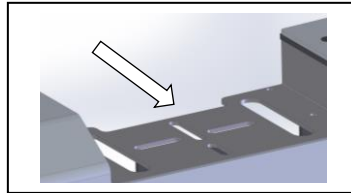
Step 14

At this stage cut the PX2 grille using the larger image at start as a guide. De burr when complete and fit back to vehicle.



Step 15

Fit the winch to bar making sure the clutch handle is facing forward with the winch mounting points. Fit control box to recess in bar. Before fitting bar it is recommended to paint surfaces below the lights etc satin black.



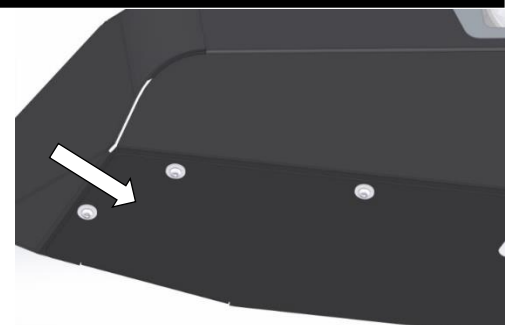
Step 16

With the help of another person lift bar into position and secure using M12 bolts, large flat washers and M12 Nyloc nuts to bar mounts. Insert pinning bolts to stop bar moving around too much. Adjust the brackets under the headlights and tighten the bolts. Place plastic plugs in sensor holes. Finish the install of all wiring and fit number plate.



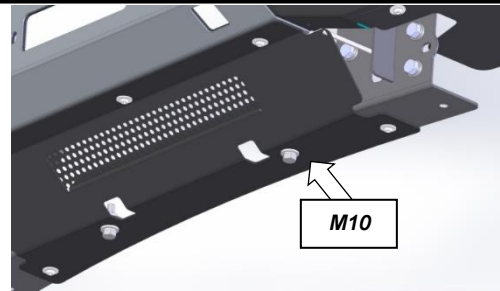
Step 17

Attach outer wing guards using M8 button head cap screws and M8 flat washers. Mark a line across plastic inner guard and cut with the same profile as the guard. Flip plastic panel over guard lip when complete.



Step 18

Fit center panel using M8 button head cap screws (outer) and M8 washers. Place M10 bolts, washers and nut in the center lower holes as shown. Clean bar with a soft rag when complete.



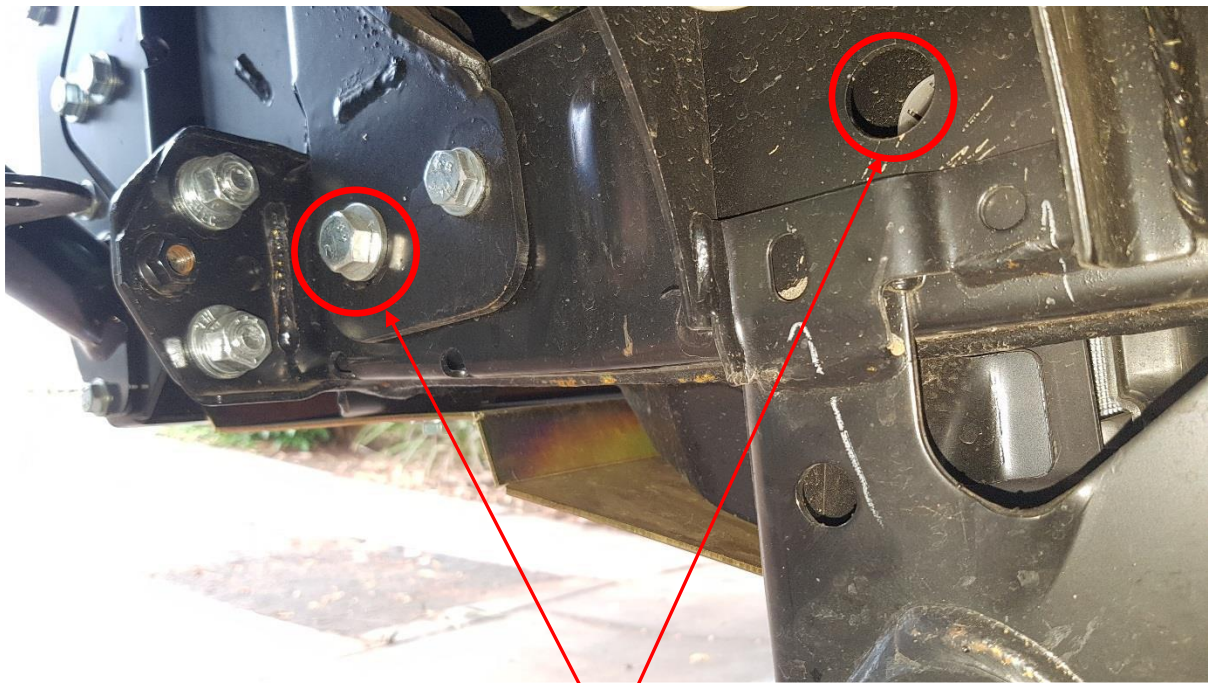
Step 19

Ensure the drivers side bracket is fitted to the drivers side of the car and vice versa.



Step 20

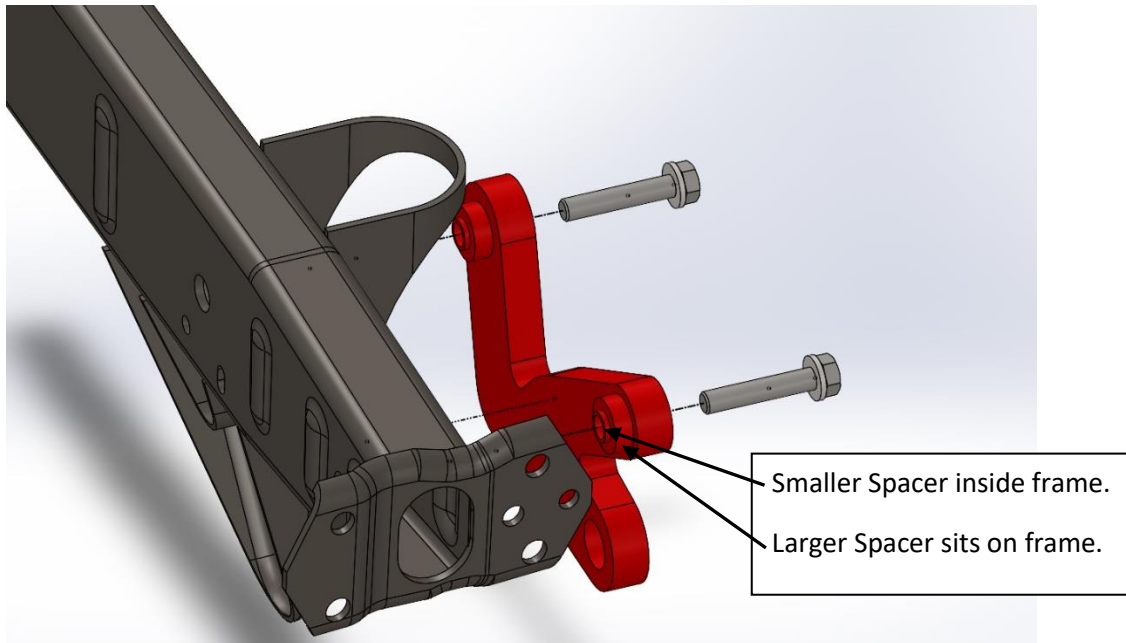
Passenger side is shown



These holes in the frame are where the recovery points bolt through.

Step 21

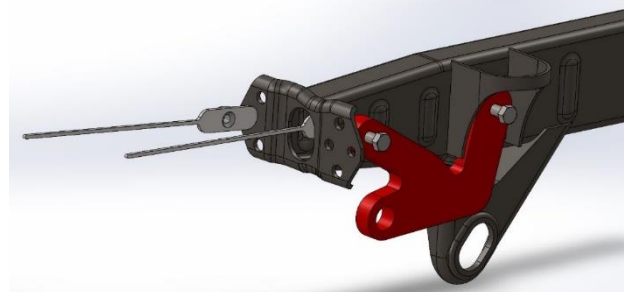
When fitting the recovery points the smaller locating spacer must fit inside the holes in the chassis rail. The larger spacers sit on the frame and allow the recovery points clearance.



Step 22

M12 x 65 bolts go into M12 flat washer and then into the holes in chassis onto nut plates. The nut plates are inserted into the chassis rail. Ensure to snap off nut plate skewers when the bolts are torqued to the correct setting (77Nm).

HINT: Hold nut plate that sits the furthest back with a pair of vice grips whilst fitting bolt.



M12-77Nm

Step 23

Repeat the Process for the Drivers side.

Ensure that the spacers fit inside the holes in chassis rails. Failure to do so may cause incorrect loading and part failure!

Step 24

If the vehicle contains a keyless entry antenna under the rear of the driver's side guard. Disconnect the antenna, trim of the guard so that it fits within the wing guard of the bar and reattach the antenna higher up on the guard. Use the bolt hole and some double-sided tape to reattach antenna.



Finished Product



Revised: 19/07/2021

***Australia's Best
Off Road Products
Created... Not Cloned***

20 Gateway Drive, Carrum Downs, VIC, 3201

1300 806 952

www.uneek4x4.com.au

