

UNEK4
A U S T R A L I A
OFF ROAD ACCESSORIES

SKU: FR-FB-18CE-ASM0

FR-FB-18CEC-ASM0



Fitting Instructions

Ford Ranger Raptor 2018 on Commander Bar

***Australia's Best Off Road Products
Created... Not Cloned***

Contents

WHY UNEEK	3
IMPORTANT INFORMATION	4
COMPONENTS AND PARTS	5
STEP 1: VEHICLE PRELIMINARIES	9
STEP 2: VEHICLE PREPARATION	10
STEP 3: BUMPER REMOVAL	10
STEP 4: VEHICLE ADJUSTMENTS	11
STEP 5: FIT IMPACT ABSORBER	11
STEP 6: FIT RECOVERY POINTS	12
STEP 7	12
STEP 8	13
STEP 9	13
STEP 10	13
STEP 11: PREPARE BULL BAR	14
STEP 12: FOG LIGHT WIRING	14
STEP 13: FIT BULL BAR	15
STEP 14: PIN BAR IN POSITION	15
STEP 15: OPTIONAL WINCH	15
STEP 16: INSTALL COVER PLATES	16
STEP 17: INSTALL BASH PLATE	16
STEP 18: FINISH	16
FINISHED PRODUCT	17

Why Uneek

Australian Designed and Built

All our products are designed and manufactured right here in Australia, allowing us to have better lead times and better quality control than companies manufacturing overseas. By supporting us you're supporting to grow the Australian economy and our brand.

Uneek Styling

We do not design our bars to look the same across the vehicle range. We fully develop our own product to individually suit each vehicle. We take time in designing from scratch and then test all our bars to comply with all relevant ADRs and Australian Standards.

Lightweight Through Smart Engineering

Having a steel bar doesn't mean you have to add more weight than is required to the front of your vehicle. Our engineering practises ensure we have the right protection, designed the right way to ensure protection is at its maximum and weights at its minimum.

Proven Off Road

We take our products out and test them right here in the heart of our country in our Australian conditions so we know our products can withstand anything you throw at them.

Increased Approach Angles

Our bars are designed to give you the best advantage while off road, with increased approach angles means you can tackle those tough and steep angles better than you could with the original setup or other alternatives.

Warranty

Uneek 4x4 back itself as Australia's leading steel bull bar manufacturer. This is why we provide you with the best steel bar warranty in Australia - 5 years.

Important Information



PLEASE READ BEFORE INSTALLATION.

- When installed in accordance with these instructions, the front protection bar does not affect the operation of the vehicles SRS airbags.
- This product must be installed exactly as per these instructions using only hardware supplied.
- Take a few moments to read instructions thoroughly before beginning work.
- In the event of damage to any bar component please contact Uneek 4x4 in regards to repair/replacement of components.
- Do not use this product for any vehicle make or model other than that specified on these instructions.
- Do not remove labels from this product.
- This product and its fixings must not be modified in any way unless stated in these fitting instructions.
- The installation of this product is recommended for trained personnel.
- These instructions are correct at time of publication. Uneek 4x4 cannot be held responsible for the impact of any changes subsequently made by the vehicle manufacturer.
- During installation it is the duty of the installer to check correct operation/clearances of all components.
- Supplied tow points are designed as tow points only. Use in a recovery operation will be at operator's risk.
- Installation time: 4-5 hours.
- Vehicle specific notes: A flip up license plate kit may be required. Optional Narva 90862 license plate light.



EYE & EAR PROTECTION REQUIRED



DRILLING REQUIRED



TWO PERSON LIFT REQUIRED



TORQUE SETTING



CUTTING OR GRINDING REQUIRED

FASTENER TORQUE SETTINGS:

M6 – 9Nm (4lb ft)

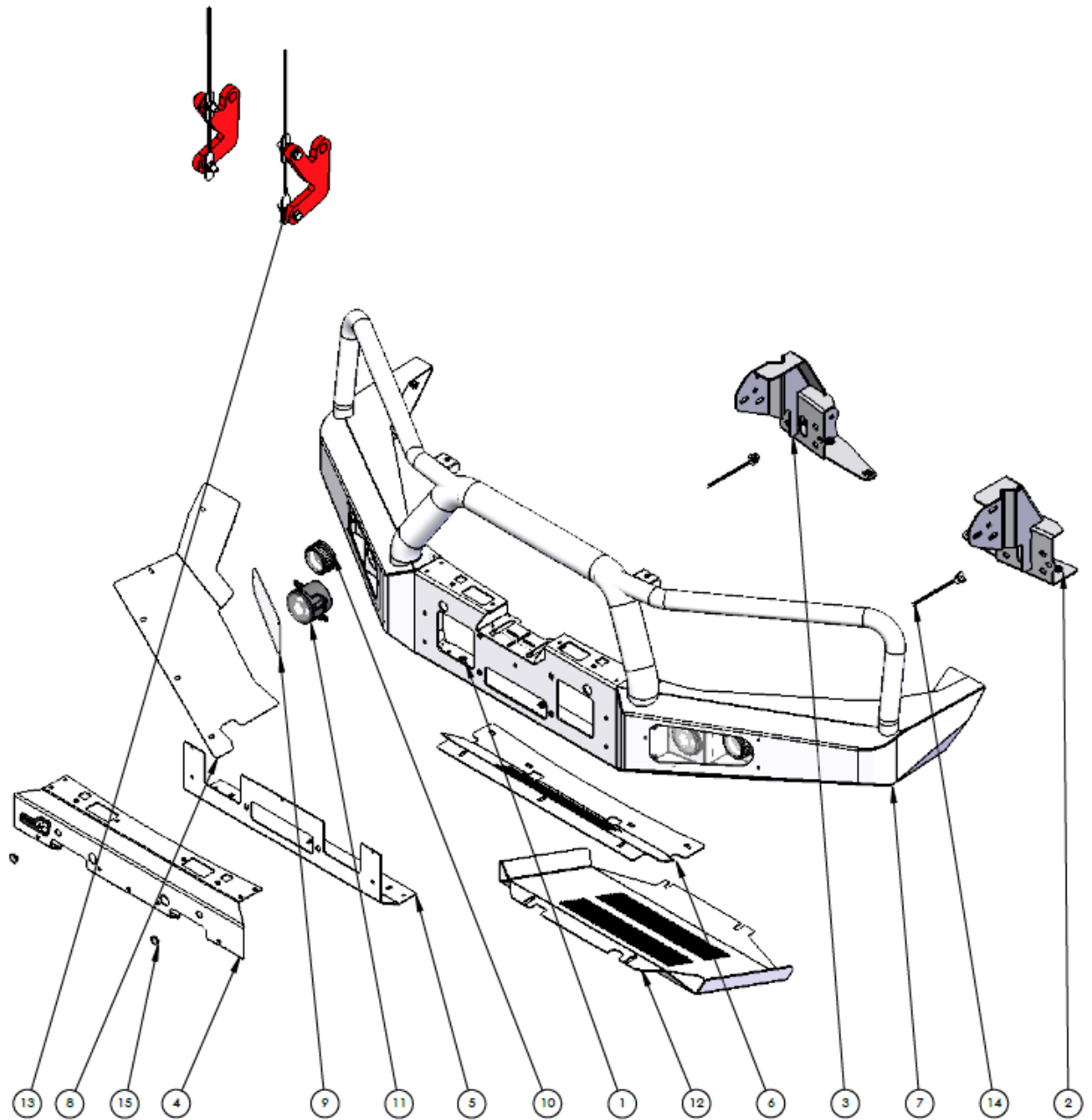
M8 – 22Nm (16lb ft)

M10 – 44Nm (32lb ft)

M12 – 77Nm (57lb ft)

Components and parts

COMMANDER CLASSIC (3 HOOP)



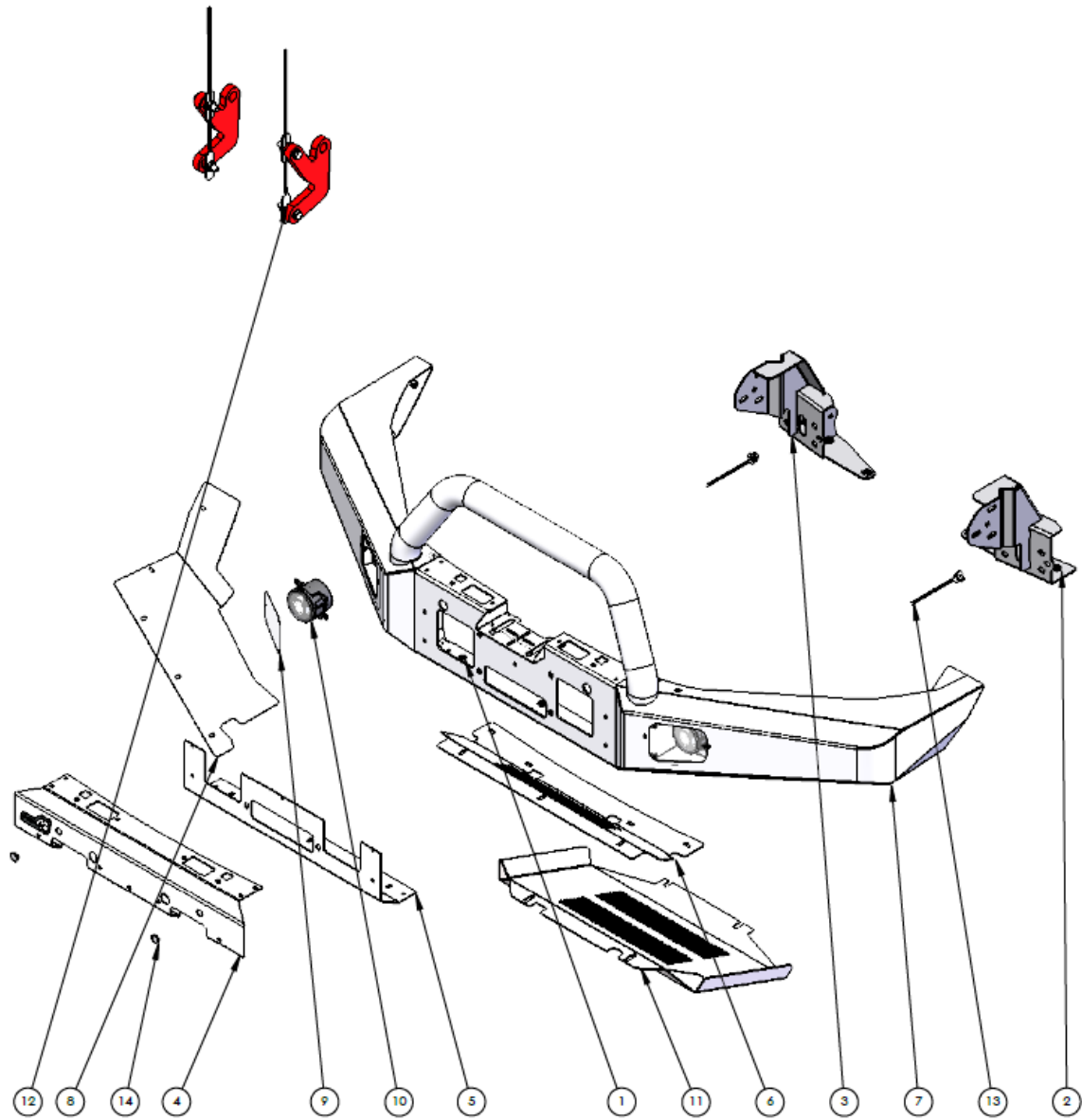
COMMANDER CLASSIC (3 HOOP)**MAIN PARTS**

ITEM NO.	PART NUMBER	DESCRIPTION	QTY.
1	FR-FB-R18CEC-ASM1	RANGER RAPTOR 18 COMMANDER CLASSIC ASSY	1
2	03-0318L	IMPACT ASSY CRAWLER PX RANGER	1
3	03-0318R	IMPACT ASSY CRAWLER PX RANGER	1
4	09-0124	PANELL ASSY TOP NP300	1
5	09-0126	PANEL MIDDLE CENTURY NP300	1
6	09-0200	CENTRE PANEL RAPTOR	1
7	09-0211L	RAPTOR COMMANDER UNDERWING - LH	1
8	09-0211R	RAPTOR COMMANDER UNDERWING - RH	1
9	12-0010	COVER PC FOG LIGHT	2
10	AUTO 8 LED	LED INDICATOR/PARKER	2
11	CARWAY DRL	DRL FOG LIGHT	2
12	FR-BP-11PX-ASM1-SIL	RANGER BASH PLATE - SILVER	1
13	FR-RP-ASM0	FORD RANGER RECOVERY POINT	1

BOLT KIT

ITEM NO.	PART NUMBER	DESCRIPTION	QTY.
14	04-0086	ASSY M10 ROOT NUT PLATE	2
15	SPFM18	Round plastic cap Kelvindale	2
16	M10FWX25	M10 FLAT WASHER X 25MM WIDE	10
17	M10SW	M10 SPRING WASHER	8
18	M10X30	M10 X 1.5 X 30MM BOLT	10
19	M12 FW X 37	M12 FLAT WASHER LARGE	12
20	M12 HD WASHER	M12 HD WASHER	6
21	M12 NYLOC NUT	M12 NYLOC NUT	10
22	M12 X 1.75 FN	M12 FLANGE NUT	2
23	M12X30	M12 X 30 HEX HT	4
24	M12X40X1.75	M12 X 40 X 1.75 BOLT	8
25	M5 FN	M5 FLANGE NUT	14
26	M5X10 PSCREW	M5 X 10 PH SCREW	8
27	M5X15 PSCREW	M5 X 15 PH SCREW	12
28	M5X16 CS	M5 COUNTERSUNK SCREW	10
29	M8 FN	FLANGE NUT M8	2
30	M8 FW X 22	FLAT WASHER 8MM LARGE	17
31	M8X25 BHCS	M8X25 BUTTON HEAD CAP SCREW Z/P	17

COMMANDER URBAN (1 HOOP)



COMMNADER URBAN (1 HOOP)**MAIN PARTS**

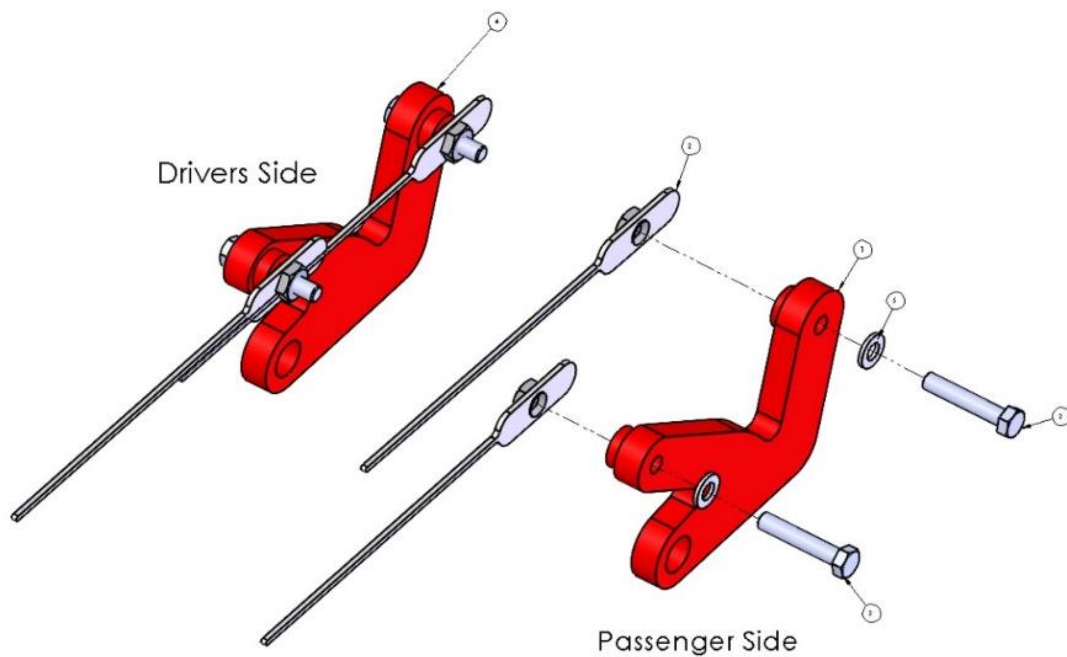
ITEM NO.	PART NUMBER	DESCRIPTION	QTY.
1	FR-FB-R18CE-ASM1	RANGER RAPTOR 18 COMMANDER URBAN ASSY	1
2	03-0318L	IMPACT ASSY CRAWLER PX RANGER	1
3	03-0318R	IMPACT ASSY CRAWLER PX RANGER	1
4	09-0124	PANELL ASSY TOP NP300	1
5	09-0126	PANEL MIDDLE CENTURY NP300	1
6	09-0200	CENTRE PANEL RAPTOR	1
7	09-0211L	RAPTOR COMMANDER UNDERWING - LH	1
8	09-0211R	RAPTOR COMMANDER UNDERWING - RH	1
9	12-0026	COVER PC FOG LIGHT CENTURY	2
10	CARWAY DRL	DRL FOG LIGHT	2
11	FR-BP-11PX-ASM1-SIL	RANGER BASH PLATE - SILVER	1
12	FR-RP-ASM0	FORD RANGER RECOVERY POINT	1

BOLT KIT

ITEM NO.	PART NUMBER	DESCRIPTION	QTY.
13	04-0086	ASSY M10 ROOT NUT PLATE	2
14	SPFM18	Round plastic cap Kelvindale	2
15	M10FWX25	M10 FLAT WASHER X 25MM WIDE	10
16	M10SW	M10 SPRING WASHER	8
17	M10X30	M10 X 1.5 X 30MM BOLT	10
18	M12 FW X 37	M12 FLAT WASHER LARGE	12
19	M12 HD WASHER	M12 HD WASHER	6
20	M12 NYLOC NUT	M12 NYLOC NUT	10
21	M12 X 1.75 FN	M12 FLANGE NUT	2
22	M12X30	M12 X 30 HEX HT	4
23	M12X40X1.75	M12 X 40 X 1.75 BOLT	8
24	M5 FN	M5 FLANGE NUT	14
25	M5X10 PSCREW	M5 X 10 PH SCREW	8
26	M5X15 PSCREW	M5 X 15 PH SCREW	12
27	M5X16 CS	M5 COUNTERSUNK SCREW	10
28	M8 FN	FLANGE NUT M8	2
29	M8 FW X 22	FLAT WASHER 8MM LARGE	17
30	M8X25 BHCS	M8X25 BUTTON HEAD CAP SCREW Z/P	17

Recovery Points

ITEM NO.	PART NUMBER	Description	QTY.
1	04-0248L	Recovery Plate ASSY Passenger Side	1
2	04-0252	NUT PLATE ASSY M12 RECOVERY	4
3	M12X65X1.75	M12 X 65MM X 1.75 BOLT	4
4	04-0248R	Recovery Plate Drivers Side	1
5	M12 HD WASHER	M12 HD WASHER	4



Step 1: Vehicle Preliminaries

- a. Check the operation of all lights and note any faults.
- b. Measure and record vehicle ride height.
- c. *Optional: Raise vehicle and support on vehicle stands or hoist.*

Step 2: Vehicle Preparation

- a. Remove inner guard infill panels [4 x T20 screws each side].
- b. Remove lower stone guard. Remove front bolt and loosen rear bolts.
- c. Remove tow hooks.
- d. Disconnect both electrical connectors beneath the bumper reinforcing and detach wiring loom from reinforcing.



Step 3: Bumper Removal

- a. Remove lower garnish [remove the 2 lower screws before unclipping the panel].
- b. Remove fog light bezels.
- c. Remove bumper bar cover and brackets [8 bolts, all accessed from the front].
- d. Remove bar reinforcing. Note 2 plastic clips which attach the lower air dam to the reinforcing.
- e. *Optional: If fitting a winch remove the air dam now.*



Step 4: Vehicle Adjustments

- Rotate horn and bracket.
- Drill out impact absorber middle mounting holes in chassis [13mm. Paint any exposed metal].
- Relocate FM booster from original bar [Drill 6mm hole in RH air deflector, mount booster and rout aerial wire along the radiator support panel].



QTY	Description
1	M5 x 10mm Phillips head screws
1	M5 Serrated Flange Nut



Step 5: Fit Impact Absorber

Loosely fit impact absorbers to bar using M10 bolts, spring and flat washers through the front plate. M12 hardware is used through the drilled middle hole. Place captive nut plate through front of chassis and secure using M10 x 30 bolt and flat washer through side of chassis rail. Adjust impact absorbers so the distance between the bulbar mounting faces is 825mm – 830mm and tighten all fasteners to the correct torque.



QTY	Description
4	M12 x 30mm Bolts
8	M12 x 27.5mm OD Flat washers
4	M12 Nyloc nuts
10	M10 x 30mm Bolts
8	M10 Spring washers
10	M10 x 30mm OD Flat washers
2	M10 x 150mm Nut plates

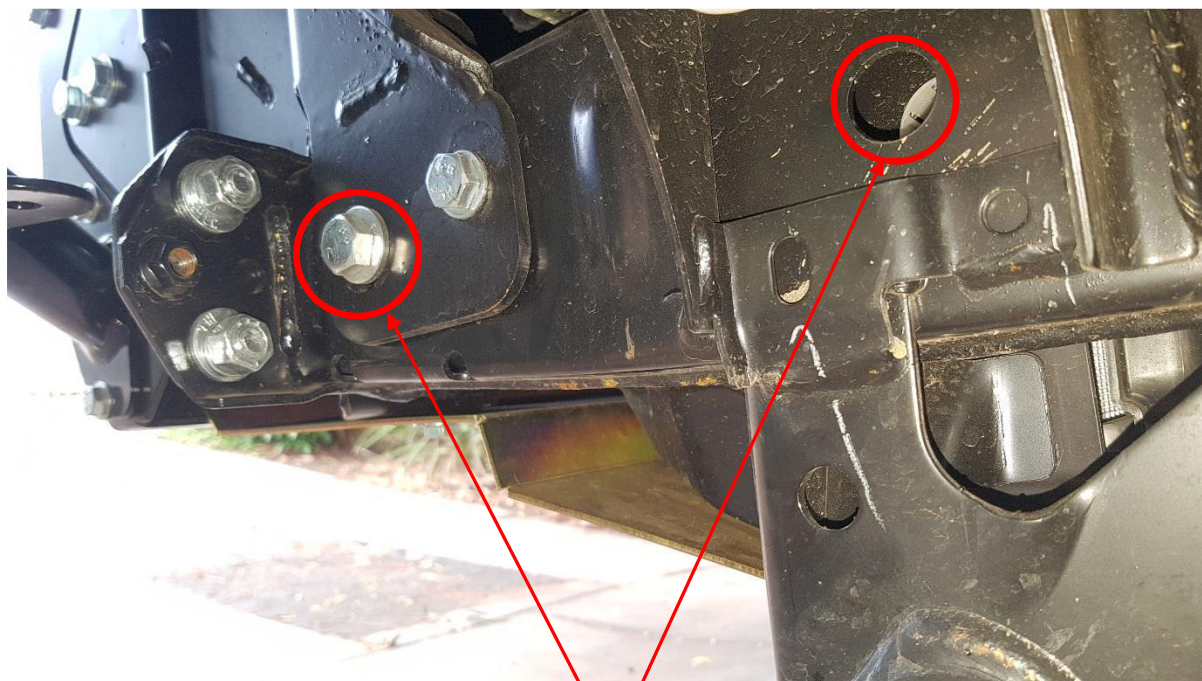
Step 6: Fit Recovery Points

Ensure the drivers side bracket is fitted to the drivers side of the car and vice versa.



Step 7

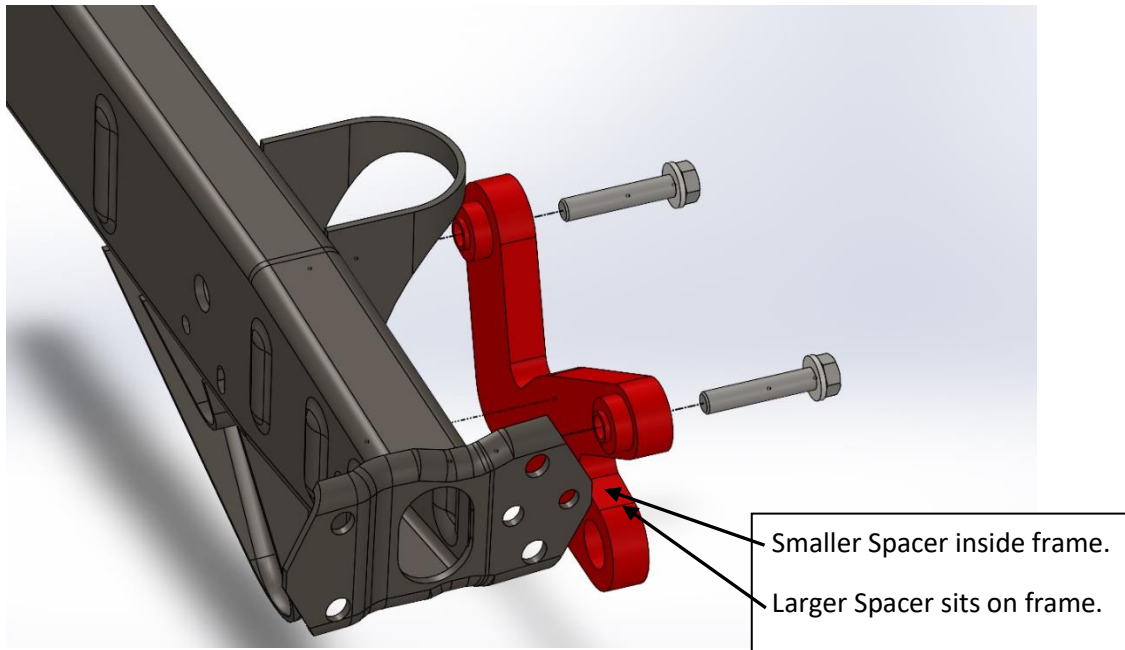
Passenger side is shown



These holes in the frame are where the recovery points bolt through.

Step 8

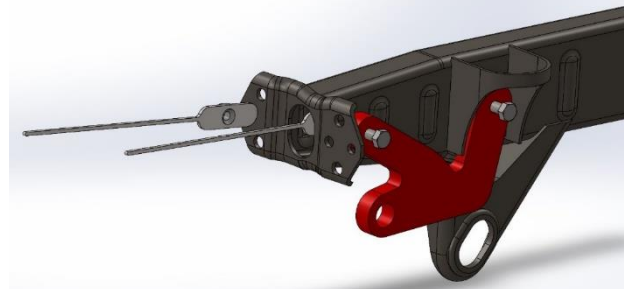
When fitting the recovery points the smaller locating spacer must fit inside the holes in the chassis rail. The larger spacers sit on the frame and allow the recovery points clearance.



Step 9

M12 x 65 bolts go into M12 flat washer and then into the holes in chassis onto nut plates. The nut plates are inserted into the chassis rail. Ensure to snap off nut plate skewers when the bolts are torqued to the correct setting (77Nm).

HINT: Hold nut plate that sits the furthest back with a pair of vice grips whilst fitting bolt.



M12-77Nm

Step 10

Repeat the Process for the Drivers side.

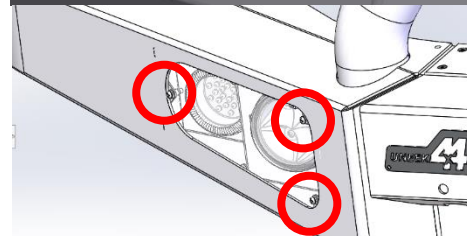
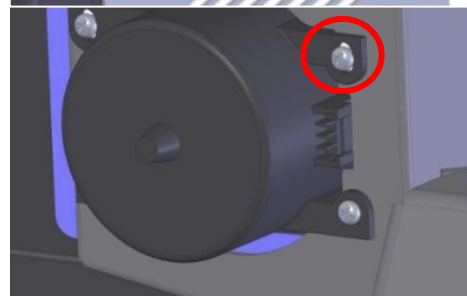
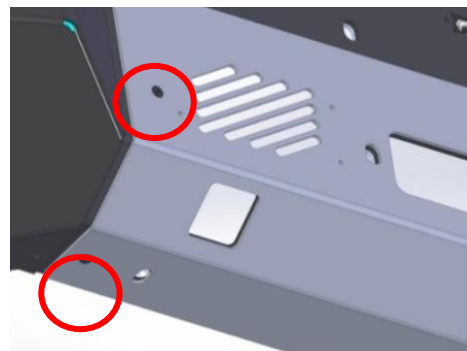
Ensure that the spacers fit inside the holes in chassis rails. Failure to do so may cause incorrect loading and part failure!

Step 11: Prepare Bull Bar

- Fit lower stainless / black center panel. 4 x M5 stainless countersunk screws and M5 flange nuts.
- Fit upper stainless / black center panel. 6 x M5 stainless countersunk screws and flange nuts and 3 x M5 x 15mm Phillips head screws through the front face of panel with flange nuts.
- Option: If fitting a winch remove the breakout piece in the upper panel before fitting.
- Fit fog lights. 8 x M5 x 10mm Philips head screws and flange nuts.
- Fit Fog Light Covers

Note: Nuts are fitted to the back side of the light

QTY	Description
10	M5 x 16mm Stainless Counter sunk screws
9	M5 x 15mm Phillips head screws
8	M5 x 10mm Phillips head screws
13	M5 Serrated flange nuts



Step 12: Fog Light Wiring

Cut the vehicle plug from the OE fog light loom (fitted to the original bar) just prior to the "T". Splice this piece into the replacement fog light loom to provide power and earth to each fog light.

Reconnect loom to the vehicle and secure this and with other wiring to the radiator lower cross member with cable ties provided.



Step 13: Fit Bull Bar

Fit the bar to vehicle using M12 x 40 bolts, large flat washers and M12 Nyloc nuts through slotted holes in mounts. Adjust bar for an even fit and no less than 10mm clearance between guard and top of bar. Tighten all fasteners to the correct torque.

Note: Small M12 Heavy duty washer will be required for top inside position as large washer will not fit.

QTY	Description
6	M12 x 40mm Bolts
10	M12 x 37 Flat washers
2	M12 HD Flat washers
6	M12 Nyloc nuts

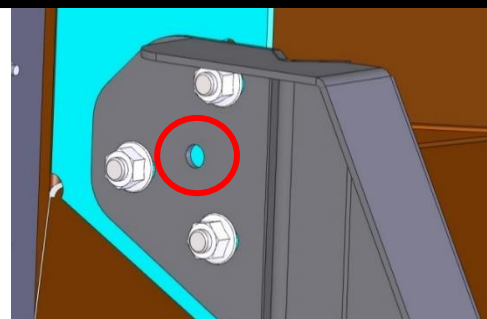


Step 14: Pin Bar in Position

Locate the holes in the mounting brackets that are in the middle of all the mounting bolts. Drill a 12mm hole through the mounting web of the bulbar using this hole as a guide. Fit and tighten the M12 hardware to secure the position of the bar.

Note: The alignment of bar will be permanent once the bar has been pinned in this process.

QTY	Description
2	M12 x 40mm Bolts
2	M12 x 37 Flat washers
2	M12 Serrated flange nuts



Step 15: Optional Winch

Fit the winch to bar making sure the clutch handle is facing forward with the winch mounting points. Fit control box to recess in bar.

Please note: Winch spacers (Part No. 04-0706) may be required to provide additional clearance for some winch motors. A slim-line number plate is recommended. Number plate flip (part no. NP-F-ASM0) is available as an alternative.

Step 16: Install Cover Plates

- a. Connect driving lights and secure wiring looms.
- b. Attach outer wing guards securing with M8 button head cap screws and M8 flat washers.
- c. Fit center panel using M8 button head cap screws (outer) and M8 washers.

QTY	Description
15	M8 x 25mm button head cap screws
15	M8 x 22mm Flat washers

Step 17: Install Bash Plate

Install bash plate. Secure using M10 hardware at the front and the 2 bolts loosened in Step 2 b.

QTY	Description
2	M8 x 25mm button head cap screws
2	M8 serrated flange nuts
2	M8 x 22mm Flat washers

Step 18: Finish

Attach Number Plate with M5 Phillip head screws.

QTY	Description
2	M5 x 15mm Phillips head screws

Stand back and admire your work. Great job!

Finished Product



Revised: 27/07/2021

***Australia's Best
Off Road Products
Created... Not Cloned***

20 Gateway Drive, Carrum Downs, VIC, 3201

1300 806 952

www.uneek4x4.com.au

