

UNEK4
AUSTRALIA
OFF ROAD ACCESSORIES

SKU: GV-FB-S1-ASM0



Fitting Instructions

Suzuki Grand Vitara 1998-2005

Winch Bumper

***Australia's Best Off Road Products
Created... Not Cloned***

Contents

WHY UNEEK	3
IMPORTANT INFORMATION	4
COMPONENTS AND PARTS	5
STEP 1	6
STEP 2	6
STEP 3	6
STEP 4	6
STEP 5	7
STEP 6	7
STEP 7	7
STEP 8	7
STEP 9	8
STEP 10	8
STEP 11	8
FINISHED PRODUCT	9

Why Uneek

Australian Designed and Built

All our products are designed and manufactured right here in Australia, allowing us to have better lead times and better quality control than companies manufacturing overseas. By supporting us you're supporting to grow the Australian economy and our brand.

Uneek Styling

We do not design our bars to look the same across the vehicle range. We fully develop our own product to individually suit each vehicle. We take time in designing from scratch and then test all our bars to comply with all relevant ADRs and Australian Standards.

Lightweight Through Smart Engineering

Having a steel bar doesn't mean you have to add more weight than is required to the front of your vehicle. Our engineering practises ensure we have the right protection, designed the right way to ensure protection is at its maximum and weights at its minimum.

Proven Off Road

We take our products out and test them right here in the heart of our country in our Australian conditions so we know our products can withstand anything you throw at them.

Increased Approach Angles

Our bars are designed to give you the best advantage while off road, with increased approach angles means you can tackle those tough and steep angles better than you could with the original setup or other alternatives.

Warranty

Uneek 4x4 back itself as Australia's leading steel bull bar manufacturer. This is why we provide you with the best steel bar warranty in Australia - 5 years.

Important Information



PLEASE READ BEFORE INSTALLATION.

- When installed in accordance with these instructions, the front protection bar does not affect the operation of the vehicles SRS airbags.
- This product must be installed exactly as per these instructions using only hardware supplied.
- Take a few moments to read instructions thoroughly before beginning work.
- In the event of damage to any bar component please contact Uneek 4x4 in regards to repair/replacement of components.
- Do not use this product for any vehicle make or model other than that specified on these instructions.
- Do not remove labels from this product.
- This product and its fixings must not be modified in any way unless stated in these fitting instructions.
- The installation of this product is recommended for trained personnel.
- These instructions are correct at time of publication. Uneek 4x4 cannot be held responsible for the impact of any changes subsequently made by the vehicle manufacturer.
- During installation it is the duty of the installer to check correct operation/clearances of all components.
- Supplied tow points are designed as tow points only. Use in a recovery operation will be at operator's risk.
- Installation time: 2 hours.
- Vehicle specific notes: Late model XL-7 vehicle will require some sheet metal brackets removed in order to mount the bumper.



EYE & EAR PROTECTION REQUIRED



DRILLING REQUIRED



TWO PERSON LIFT REQUIRED



TORQUE SETTING



CUTTING OR GRINDING REQUIRED

FASTENER TORQUE SETTINGS:

M6 – 9Nm (4lb ft)

M8 – 22Nm (16lb ft)

M10 – 44Nm (32lb ft)

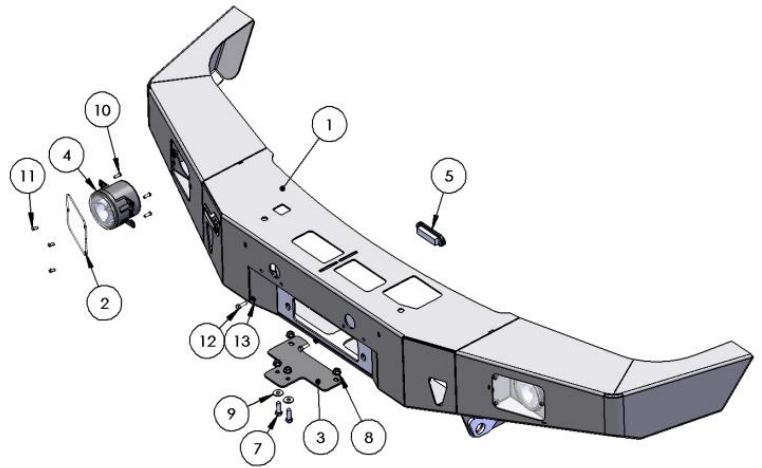
M12 – 77Nm (57lb ft)

TOOLS REQUIRED:

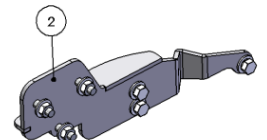
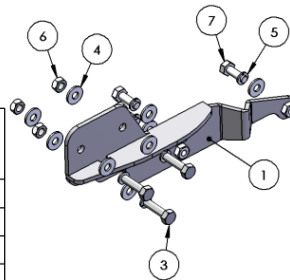
Basic tool kit, masking tape, satin black paint, drill and drill bits, sharp knife or small hacksaw, male and female spade terminals or scotch lock.

Components and parts

ITEM NO.	PART NUMBER	DESCRIPTION	QTY.
1	GV-FB-S1-ASM1	FRONT BUMPER GRAND VITARA UP TO 2005	1
2	12-0011	COVER FOG GV	2
3	04-0021	PLATE DIFF PUMP GV	1
4	LED FOG LIGHT	LED FOG LIGHT	2
5	90862	LED WINCH LIGHT	1
6	M5 NUTSERT	NUTSERT 5MM	14
7	M8X25	BOLT M8 X 25	2
8	M8 FN	FLANGE NUT M8	4
9	M8 FW X 22	FLAT WASHER 8MM LARGE	2
10	M5X15 PSCREW	M5 X 15 PH SCREW	8
11	M5X10 PSCREW	M5 X 10 PH SCREW	6
12	M6X20	M6 X 20 BOLT	2
13	M6 FW	M6 FLAT WASHER	2
14	M6 FN	FLANGE NUT M6	2



ITEM NO.	PART NUMBER	DESCRIPTION	QTY.
1	03-0023R	BRACKET ASSY CHASSIS GV	1
2	03-0023L	BRACKET ASSY CHASSIS GV	1
3	M10X40X1.5	BOLT M10 X 40	6
4	M10FWX25	M10 FLAT WASHER X 25MM WIDE	18
5	M10SW	M10 SPRING WASHER	12
6	M10X1.25N	M10 X 1.25 NUT	6
7	M10X30	M10 X 1.5 X 30MM BOLT	6



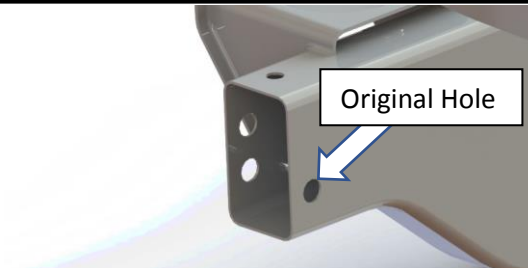
Step 1

Remove grille, bumper and front diff pump. Mark hoses on pump before removing. To get the grille ends out, place a flat blade screwdriver covered by a thick rag between guard and grille and gently lever out.



Step 2

Locate and drill through the lower inner holes in the chassis as shown in the image. On the outside of the chassis measure up 25mm from the newly drilled hole and drill using the same size. Drill outside chassis only. RH side shown.



Step 3

Re-fit vehicle grille. On light coloured vehicles mask the lower edge of the grille and paint lower sheet metal satin black.



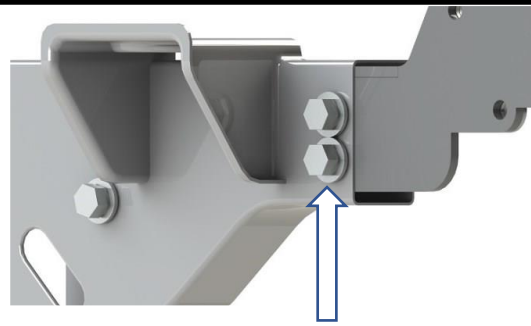
Step 4

Cut inner guard flush with lower edge of body sheet metal and re-attach.



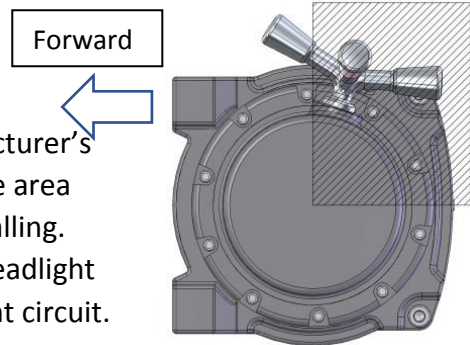
Step 5

Fit chassis brackets to vehicle using M10 x 30 bolts, spring washers and flat washers. At this stage leave finger tight.



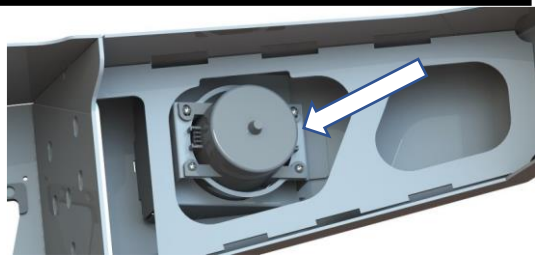
Step 6

If fitting a winch do so now. Refer to the winch manufacturer's manual and rotate the gearbox lever to a position in the area shown in the image. Fit earth lead to winch before installing. Install the fog light loom before fitting the bar as one headlight unit will need to be removed to connect to the park light circuit. The winch light will also have to be run to this circuit.



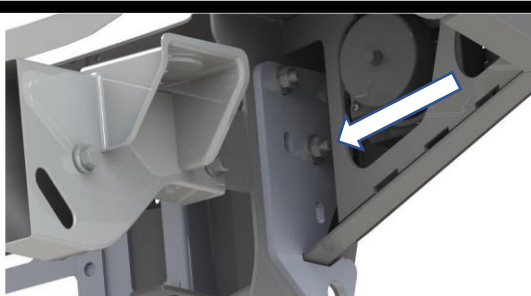
Step 7

Mount fog lights to bar using M5 x 15 screws. Fit winch light and run cable through winch cradle and secure using cable ties in holes provided.



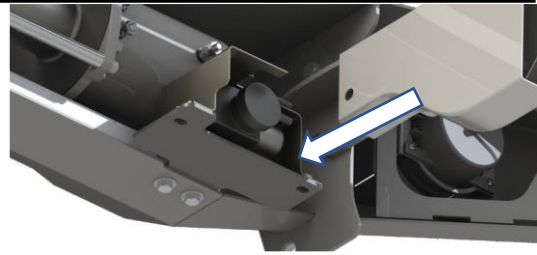
Step 8

With the help of another person lift bar onto chassis brackets and secure using M10 x 40 bolts, spring washers, two flat washers per bolt and M10 nuts. Note: If fitting to a vehicle with body lift use lower set of holes. Adjust bar so a satisfactory gap is achieved and tighten all bolts. Mount winch control box and wire to battery.



Step 9

Install pump to mounting plate supplied using original M8 bolts and M8 flange nuts supplied. Bolt mounting plate to either top or lower surface of bar depending on size of winch motor. Re-connect hoses to pump. Tighten all bolts.



Step 10

It is recommended in all instances that a slim line license plate be fitted for best looks and air flow. If a hawse fairlead is fitted secure the plate as shown. This can also be used if a roller fairlead is fitted but it is recommended that NP-F2-ASM0 flip up kit be fitted to cover the roller fairlead for on road use.



Step 11

Install clear covers over fog lights using M5 x 10 screws. Wire up fog lights using loom supplied tapping from the park light circuit.



Finished Product



Revised: 07/08/2019

***Australia's Best
Off Road Products
Created... Not Cloned***

20 Gateway Drive, Carrum Downs, VIC, 3201

1800 806 952

www.uneek4x4.com.au

