

UNEK4
AUSTRALIA
OFF ROAD ACCESSORIES

SKU: SJ-FB-S12-ASM0



Fitting Instructions

Suzuki Jimny 1998-2012 Petrol Models

Winch Bumper

***Australia's Best Off Road Products
Created... Not Cloned***

Contents

WHY UNEEK	3
IMPORTANT INFORMATION	4
COMPONENTS AND PARTS	5
STEP 1	6
STEP 2	6
STEP 3	6
STEP 4	6
STEP 5	7
STEP 6	7
STEP 7	7
STEP 8	7
STEP 9	8
STEP 10	8
STEP 11	8
STEP 12	8
FINISHED PRODUCT	9

Why Uneek

Australian Designed and Built

All our products are designed and manufactured right here in Australia, allowing us to have better lead times and better quality control than companies manufacturing overseas. By supporting us you're supporting to grow the Australian economy and our brand.

Uneek Styling

We do not design our bars to look the same across the vehicle range. We fully develop our own product to individually suit each vehicle. We take time in designing from scratch and then test all our bars to comply with all relevant ADRs and Australian Standards.

Lightweight Through Smart Engineering

Having a steel bar doesn't mean you have to add more weight than is required to the front of your vehicle. Our engineering practises ensure we have the right protection, designed the right way to ensure protection is at its maximum and weights at its minimum.

Proven Off Road

We take our products out and test them right here in the heart of our country in our Australian conditions so we know our products can withstand anything you throw at them.

Increased Approach Angles

Our bars are designed to give you the best advantage while off road, with increased approach angles means you can tackle those tough and steep angles better than you could with the original setup or other alternatives.

Warranty

Uneek 4x4 back itself as Australia's leading steel bull bar manufacturer. This is why we provide you with the best steel bar warranty in Australia - 5 years.

Important Information



PLEASE READ BEFORE INSTALLATION.

- When installed in accordance with these instructions winch bumpers do not affect the operation of the vehicles SRS airbags.
- This product must be installed exactly as per these instructions using only hardware supplied.
- Take a few moments to read instructions thoroughly before beginning work.
- In the event of damage to any bar component please contact Uneek 4x4 in regards to repair/replacement of components.
- Do not use this product for any vehicle make or model other than that specified on these instructions.
- Do not remove labels from this product.
- This product and its fixings must not be modified in any way unless stated in these fitting instructions.
- The installation of this product is recommended for trained personnel.
- These instructions are correct at time of publication. Uneek 4x4 cannot be held responsible for the impact of any changes subsequently made by the vehicle manufacturer.
- During installation it is the duty of the installer to check correct operation/clearances of all components.
- Installation time: 1 hour.
- Vehicle specific notes: Will not suit vehicles with factory bonnet scoop. If using roller fairlead a flip up license plate kit will be required.



EYE & EAR PROTECTION REQUIRED



DRILLING REQUIRED



TWO PERSON LIFT REQUIRED



TORQUE SETTING



CUTTING OR GRINDING REQUIRED

FASTENER TORQUE SETTINGS:

M6 – 9Nm (4lb ft)

M8 – 22Nm (16lb ft)

M10 – 44Nm (32lb ft)

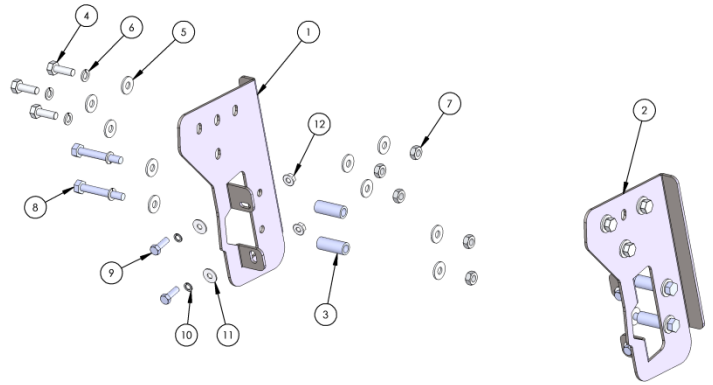
M12 – 77Nm (57lb ft)

TOOLS REQUIRED:

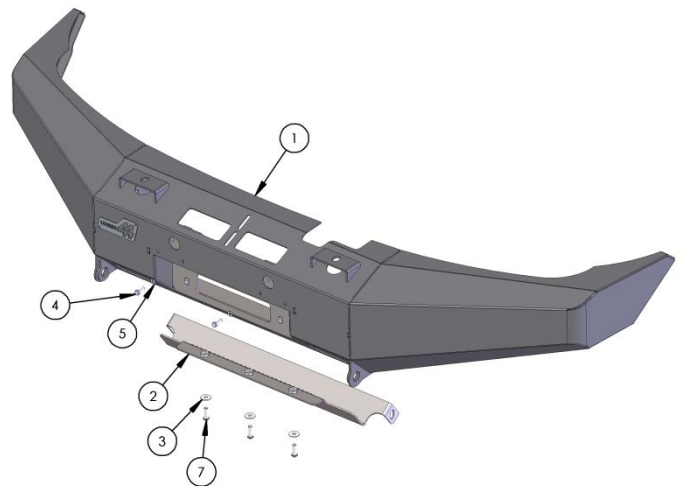
Drill and drill bits.

Components and parts

ITEM NO.	PART NUMBER	DESCRIPTION	QTY.
1	03-0067R	BRACKET CHASSIS MOUNT JIMNY BUMPER	1
2	03-0067L	BRACKET CHASSIS MOUNT JIMNY BUMPER	1
3	05-0017	TUBE CHASSIS SIERRA	4
4	M10X30	M10 X 1.5 X 30MM BOLT	6
5	M10FWX25	M10 FLAT WASHER X 25MM WIDE	20
6	M10SW	M10 SPRING WASHER	10
7	M10X1.25N	M10 X 1.25 NUT	10
8	M10x1.5X70	M10 X 1.5 X 70MM BOLT	4
9	M8X25	BOLT M8 X 25	4
10	M8 SW	M8 SPRING WASHER	4
11	M8 FW X 22	FLAT WASHER 8MM LARGE	4
12	M8 FN	FLANGE NUT M8	4



ITEM NO.	PART NUMBER	DESCRIPTION	QTY.
1	SJ-FB-S12-ASM1	WELDED ASSY SUZUKI JIMNY	1
2	09-0021	PANEL ASSY JIMNY STONE SHIELD	1
3	M8 FW X 22	FLAT WASHER 8MM LARGE	3
4	M6X20	M6 X 20 BOLT	2
5	M6 FW	M6 FLAT WASHER	2
6	M6 FN	FLANGE NUT M6	2
7	M8X25 BHCS	M8 BUTTON HEAD CAP SCREW	3



Step 1

Remove original bumper including small brackets shown by arrow.



Step 2

Remove clips holding section shown of plastic inner guard. Using a sharp knife or hacksaw cut this section away only.



Step 3

Place mounting brackets on chassis and mark holes for drilling. RH side shown.



Step 4

Drill marked holes out to 5mm through both sides of each rail.



Step 5

Using a drill bit or step drill open the outer chassis holes only to 10.5mm. Paint when done. RH side outer shown.



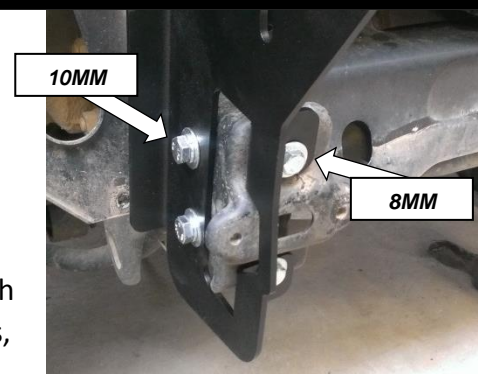
Step 6

Using a drill bit or step drill open the inner chassis rails holes to 18mm. Paint when complete. LH side inner shown.



Step 7

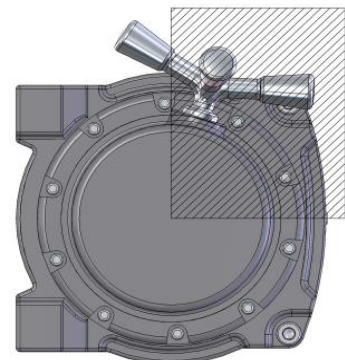
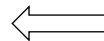
Attach brackets to chassis using long M10 bolts, spring washers, two flat washers per bolt, M10 nuts and crush tubes slid into the chassis from the inner holes. Note: Place the bolts through the hole first then slide the crush tubes over them. Secure the front points using M8 bolts, spring washers, flat washers and M8 flange nuts on the inside of chassis flange. Leave loose. RH side shown.



Step 8

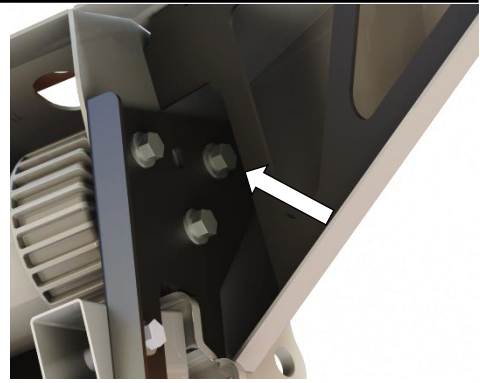
If installing a winch do so now keeping the clutch handle in an area as shown. Install optional license plate light (Narva 90862) at this stage also. Please refer to winch owner's manual in regard to rotating handle position.

Forward



Step 9

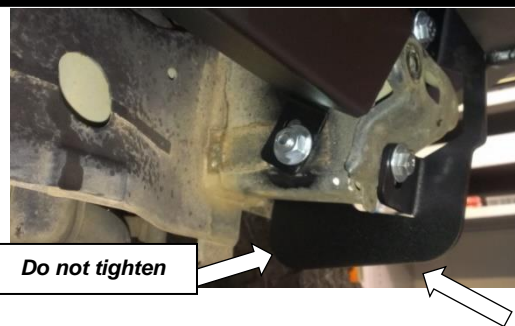
With the help of another person lift bar onto mounts and loosely secure using M10 x 30 bolts, spring washers, two flat washers and M10 nuts per hole. Note: If the vehicle has a body lift raise the bar up until all three holes line up with top holes of chassis bracket. Once this is done adjust bar to a suitable position (10-15mm from guard) and tighten bar bolts.



M10-44Nm

Step 10

Tighten all chassis bracket bolts EXCEPT lower M10 chassis bolt.



M10-44Nm M8-22Nm

Step 11

Remove nuts and washers from lower M10 bolts and place the end of the bolt flush with the chassis rail. Slide air deflector into position and push M10 bolts through lower holes. Secure to bar using M8 button head cap screws and M8 flat washers. Tighten all bolts when done.



M10-44Nm M8-22Nm

Step 12

Fit license plate to vehicle. If no winch is fitted place license plate over winch recess. If a Hawse fairlead is fitted mount license plate above recess (a slim line is recommended). If using roller fairleads it is recommended that a flip up license plate kit is fitted.



Finished Product



Revised: 08/08/2019

***Australia's Best
Off Road Products
Created... Not Cloned***

20 Gateway Drive, Carrum Downs, VIC, 3201

1800 806 952

www.uneek4x4.com.au

