

UNEK4
AUSTRALIA
OFF ROAD ACCESSORIES

SKU: S-FB-ASM0



Fitting Instructions

Suzuki Sierra/Samurai 1981-1996

Front Protection Bar

***Australia's Best Off Road Products
Created... Not Cloned***

Contents

WHY UNEEK	3
IMPORTANT INFORMATION	4
COMPONENTS AND PARTS	5
STEP 1	6
STEP 2	6
STEP 3	6
STEP 4	7
STEP 5	7
STEP 6	7
STEP 7	7
STEP 8	8
STEP 9	8
STEP 10	8
FINISHED PRODUCT	9

Why Uneek

Australian Designed and Built

All our products are designed and manufactured right here in Australia, allowing us to have better lead times and better quality control than companies manufacturing overseas. By supporting us you're supporting to grow the Australian economy and our brand.

Uneek Styling

We do not design our bars to look the same across the vehicle range. We fully develop our own product to individually suit each vehicle. We take time in designing from scratch and then test all our bars to comply with all relevant ADRs and Australian Standards.

Lightweight Through Smart Engineering

Having a steel bar doesn't mean you have to add more weight than is required to the front of your vehicle. Our engineering practises ensure we have the right protection, designed the right way to ensure protection is at its maximum and weights at its minimum.

Proven Off Road

We take our products out and test them right here in the heart of our country in our Australian conditions so we know our products can withstand anything you throw at them.

Increased Approach Angles

Our bars are designed to give you the best advantage while off road, with increased approach angles means you can tackle those tough and steep angles better than you could with the original setup or other alternatives.

Warranty

Uneek 4x4 back itself as Australia's leading steel bull bar manufacturer. This is why we provide you with the best steel bar warranty in Australia - 5 years.

Important Information



PLEASE READ BEFORE INSTALLATION.

- When installed in accordance with these instructions, the front protection bar does not affect the operation of the vehicles SRS airbags.
- This product must be installed exactly as per these instructions using only hardware supplied.
- Take a few moments to read instructions thoroughly before beginning work.
- In the event of damage to any bar component please contact Uneek 4x4 in regards to repair/replacement of components.
- Do not use this product for any vehicle make or model other than that specified on these instructions.
- Do not remove labels from this product.
- This product and its fixings must not be modified in any way unless stated in these fitting instructions.
- The installation of this product is recommended for trained personnel.
- These instructions are correct at time of publication. Uneek 4x4 cannot be held responsible for the impact of any changes subsequently made by the vehicle manufacturer.
- During installation it is the duty of the installer to check correct operation/clearances of all components.
- Supplied tow points are designed as tow points only. Use in a recovery operation will be at operator's risk.
- Installation time: 1-2 hours.
- Vehicle specific notes: Due to larger tyres and larger winches it will be required to complete some welding to the chassis for maximum strength. A flip up license plate kit may also be required.



EYE & EAR PROTECTION REQUIRED



DRILLING REQUIRED



TWO PERSON LIFT REQUIRED



TORQUE SETTING



CUTTING OR GRINDING REQUIRED

FASTENER TORQUE SETTINGS:

M6 – 9Nm (4lb ft)

M8 – 22Nm (16lb ft)

M10 – 44Nm (32lb ft)

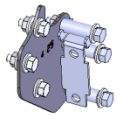
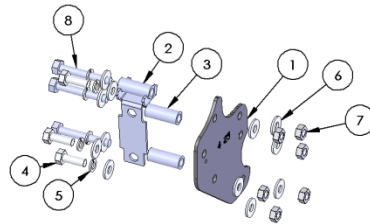
M12 – 77Nm (57lb ft)

TOOLS REQUIRED:

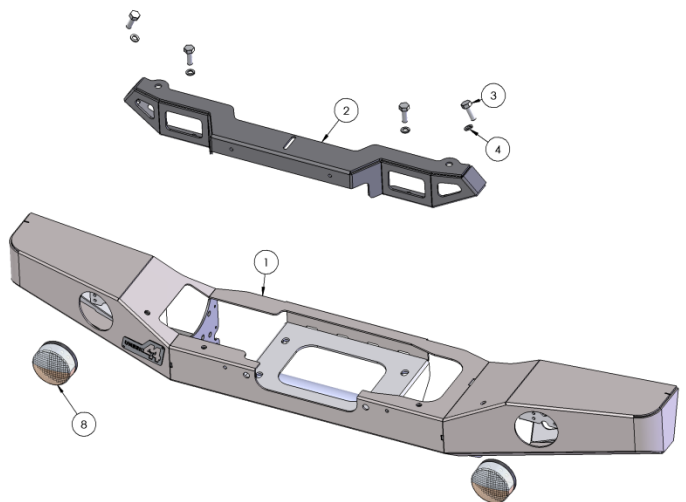
Basic tool kit, welder (mig), soldering iron and electrical tape.

Components and parts

ITEM NO.	PART NUMBER	Description	QTY.
1	04-0025	PLATE MOUNT CHASSIS SIERRA	2
2	03-0029	BRACKET ASSY TOP CHASSIS	2
3	05-0017	TUBE CHASSIS SIERRA	4
4	M10X30	M10 X 1.5 X 30MM BOLT	6
5	M10SW	M10 SPRING WASHER	12
6	M10FWX25	M10 FLAT WASHER X 25MM WIDE	24
7	M10X1.5N	M10 X 1.5 NUT	12
8	M10x1.5X70	M10 X 1.5 X 70MM BOLT	6



ITEM NO.	PART NUMBER	Description	QTY.
1	SS-FB-AM-ASM1	WINCH BUMPER SIERRA	1
2	03-0025	BRACKET LIGHT MOUNT SIERRA	1
3	M10X30	M10 X 1.5 X 30MM BOLT	4
4	M10SW	M10 SPRING WASHER	4
5	M10FWX25	M10 FLAT WASHER X 25MM WIDE	4
6	M10X1.5N	M10 X 1.5 NUT	4
8	AUTO 8 LED	LED INDICATOR/PARKER	2
9	03-0029	BRACKET ASSY TOP CHASSIS	2



Step 1

Remove and discard original bumper and lighting.



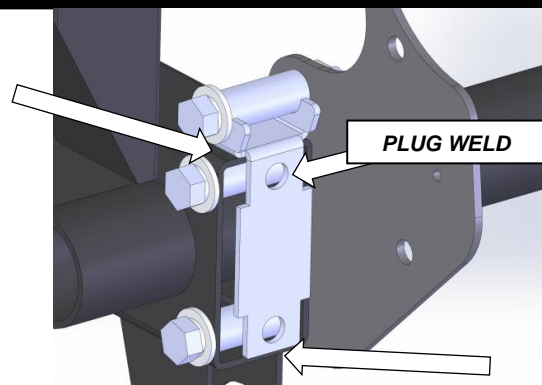
Step 2

It will be required to remove the original bumper mounts. Cut these from the chassis mounts outwards. De-burr and paint when done. Clean paint from top surface and front face of chassis for welding.



Step 3

Fit mounts to inside of chassis using exploded view above as a guide. Tack-weld the extra supports in place (arrows). Plug weld tube sleeves to mount. Remove mounts and complete welding. It may be required to shape the chassis end and bracket to suit. Make sure inner chassis weld is ground flush. Paint when complete. When dry fit chassis mounts and leave finger tight.

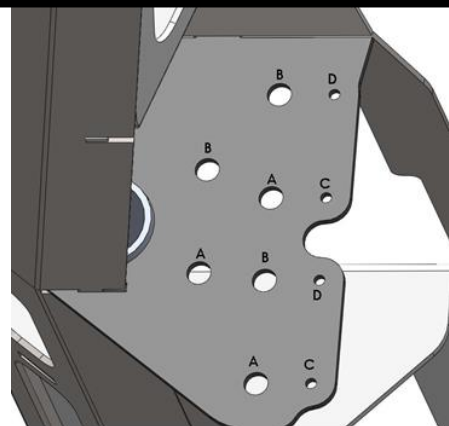


Step 4

Before fitting the bar ensure you have chosen the correct mounting holes. Use the image as a guide;

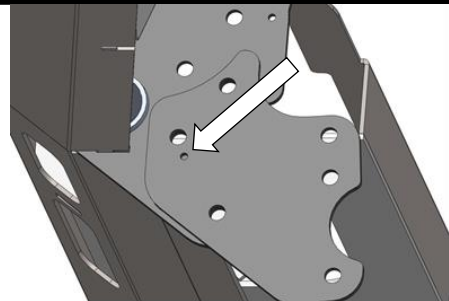
- A- Leaf sprung with 50mm body lift.
- B- Leaf sprung standard height.
- C- Coil sprung 50mm body lift.
- D- Coil sprung standard height.

Coil sprung mounts will need to be drilled to 13mm.



Step 5

NOTE: For coil sprung vehicles drill the final mounting hole in the chassis mount to 13mm using small hole in mount as guide after bar is fitted.

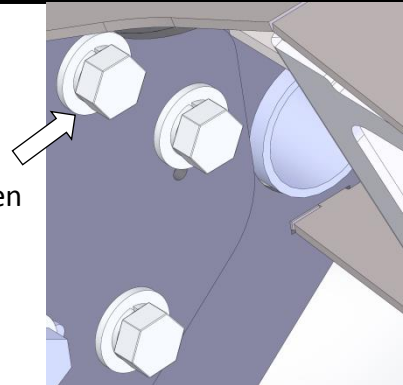


Step 6

Secure bar to vehicle using M10 x 30 bolts, M10 spring washers, M10 flat washers (two per bolt) and M10 nuts. When happy with adjustment torque all fasteners.



M10-44Nm



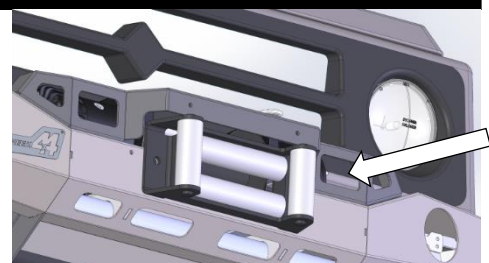
Step 7

If fitting a winch do so now using winch hardware, if not fit license plate to bar using M6 fasteners supplied. Clutch handle must be opposite winch mounting feet.

If winch has been fitted attach light mount to bar using M10 x 30 bolts, M10 spring washers, M10 flat washers and M10 nuts.



M10-44Nm



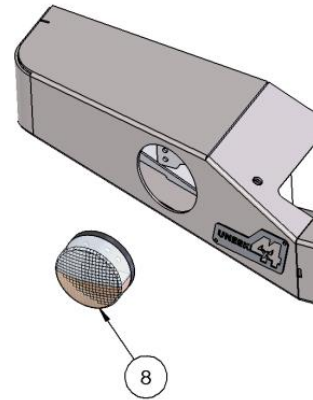
Step 8

Fit supplied LED indicators to bar. Cut the wires from the old lights and solder to the LED's. LED wires are as follows;

WHITE: Ground.

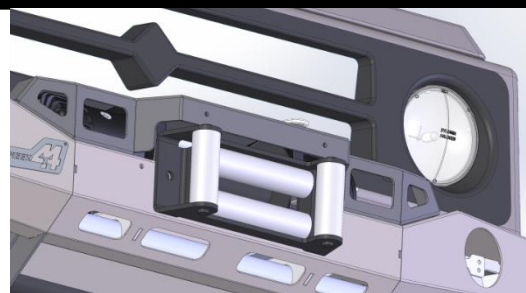
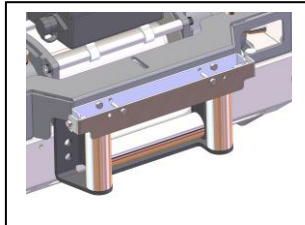
GREEN: Indicator.

BROWN: Park light.



Step 9

If using a roller fairlead you can either bolt the license plate to the light mount directly using the bottom holes in the license plate or purchase an optional license plate flip kit (NP-F-ASM0). It is recommended that a slim-line plate is fitted for best results.



Step 10

The outer holes in the bracket are for communications ariels (arrow). Drill holes to suit the lights you are running in the top of the light mount.

Ensure all fasteners are tight and lights are working.



Finished Product



Revised: 09/08/2019

***Australia's Best
Off Road Products
Created... Not Cloned***

20 Gateway Drive, Carrum Downs, VIC, 3201

1800 806 952

www.uneek4x4.com.au

