

**UNEK4**  
AUSTRALIA  
OFF ROAD ACCESSORIES

**SKU: TL-FB-200-ASM0**



## ***Fitting Instructions***

***Toyota LC200 Series 2008-2015***

***Urban and Classic Bull Bar***

***Australia's Best Off Road Products  
Created... Not Cloned***

# **Contents**

---

<b>WHY UNEEK</b>	<b>3</b>
<b>IMPORTANT INFORMATION</b>	<b>4</b>
<b>COMPONENTS AND PARTS</b>	<b>5</b>
<b>STEP 1</b>	<b>6</b>
<b>STEP 2</b>	<b>6</b>
<b>STEP 3</b>	<b>6</b>
<b>STEP 4</b>	<b>6</b>
<b>STEP 5</b>	<b>7</b>
<b>STEP 6</b>	<b>7</b>
<b>STEP 7</b>	<b>7</b>
<b>STEP 8</b>	<b>7</b>
<b>STEP 9</b>	<b>8</b>
<b>STEP 10</b>	<b>8</b>
<b>STEP 11</b>	<b>8</b>
<b>STEP 12</b>	<b>8</b>
<b>STEP 13</b>	<b>9</b>
<b>STEP 14</b>	<b>9</b>
<b>STEP 15</b>	<b>9</b>
<b>STEP 16</b>	<b>9</b>
<b>STEP 17</b>	<b>10</b>
<b>STEP 18</b>	<b>10</b>
<b>STEP 19</b>	<b>10</b>
<b>STEP 20</b>	<b>10</b>
<b>STEP 21</b>	<b>11</b>
<b>FINISHED PRODUCT</b>	<b>12</b>

# ***Why Uneek***

---

## ***Australian Designed and Built***

All our products are designed and manufactured right here in Australia, allowing us to have better lead times and better quality control than companies manufacturing overseas. By supporting us you're supporting to grow the Australian economy and our brand.

## ***Uneek Styling***

We do not design our bars to look the same across the vehicle range. We fully develop our own product to individually suit each vehicle. We take time in designing from scratch and then test all our bars to comply with all relevant ADRs and Australian Standards.

## ***Lightweight Through Smart Engineering***

Having a steel bar doesn't mean you have to add more weight than is required to the front of your vehicle. Our engineering practises ensure we have the right protection, designed the right way to ensure protection is at its maximum and weights at its minimum.

## ***Proven Off Road***

We take our products out and test them right here in the heart of our country in our Australian conditions so we know our products can withstand anything you throw at them.

## ***Increased Approach Angles***

Our bars are designed to give you the best advantage while off road, with increased approach angles means you can tackle those tough and steep angles better than you could with the original setup or other alternatives.

## ***Warranty***

Uneek 4x4 back itself as Australia's leading steel bull bar manufacturer. This is why we provide you with the best steel bar warranty in Australia - 5 years.

# Important Information

---



## PLEASE READ BEFORE INSTALLATION.

- When installed in accordance with these instructions, the front protection bar does not affect the operation of the vehicles SRS airbags.
- This product must be installed exactly as per these instructions using only hardware supplied.
- Take a few moments to read instructions thoroughly before beginning work.
- In the event of damage to any bar component please contact Uneek 4x4 in regards to repair/replacement of components.
- Do not use this product for any vehicle make or model other than that specified on these instructions.
- Do not remove labels from this product.
- This product and its fixings must not be modified in any way unless stated in these fitting instructions.
- The installation of this product is recommended for trained personnel.
- These instructions are correct at time of publication. Uneek 4x4 cannot be held responsible for the impact of any changes subsequently made by the vehicle manufacturer.
- During installation it is the duty of the installer to check correct operation/clearances of all components.
- Supplied tow points are designed as tow points only. Use in a recovery operation will be at operator's risk.
- Installation time: 5-6 hours.
- Vehicle specific notes: A flip up license plate kit may be required. Optional Narva 90862 license plate light.



**EYE & EAR PROTECTION REQUIRED**



**DRILLING REQUIRED**



**TWO PERSON LIFT REQUIRED**



**TORQUE SETTING**



**CUTTING OR GRINDING REQUIRED**

### FASTENER TORQUE SETTINGS:

M6 – 9Nm (4lb ft)

M8 – 22Nm (16lb ft)

M10 – 44Nm (32lb ft)

M12 – 77Nm (57lb ft)

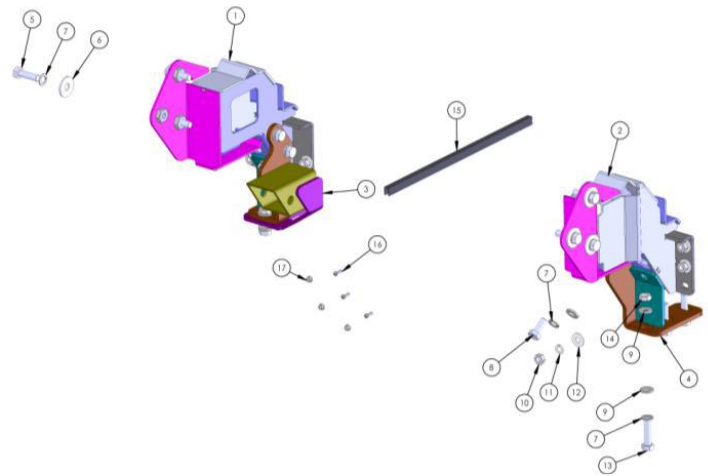
### TOOLS REQUIRED:

Basic tool kit, soldering iron or electrical in-line connectors, male and female spade terminals, jigsaw or air hacksaw, drill and drill bit kit.

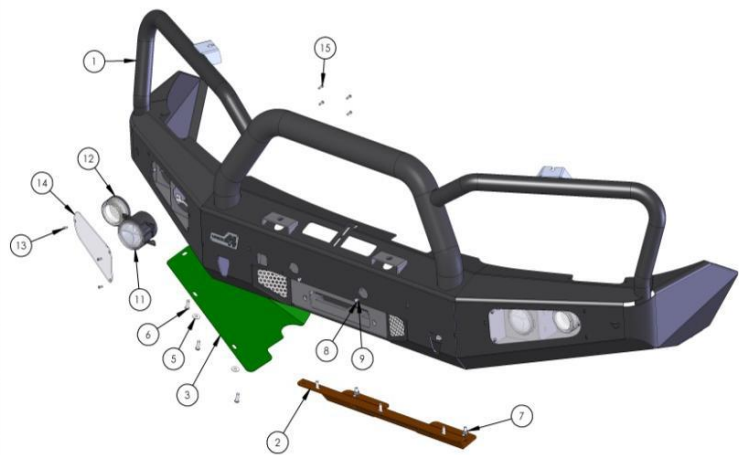
Wire will be required to extend front camera if fitted.

# Components and parts

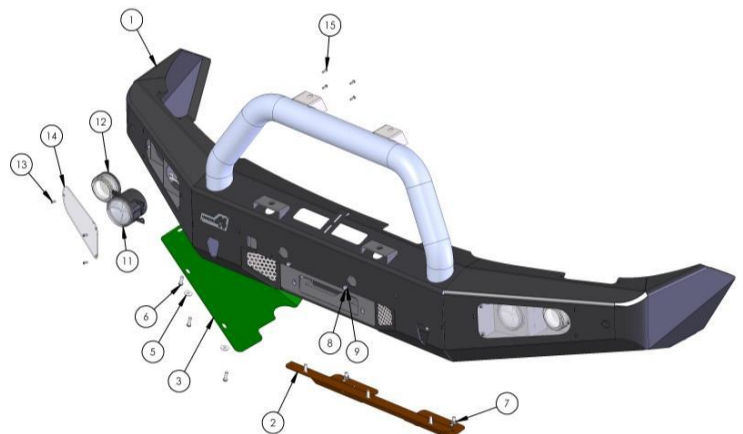
ITEM NO.	PART NUMBER	DESCRIPTION	QTY.
1	03-0250R		1
2	03-0250L	BRACKET ASSY 200 IMPACT	1
3	03-0258R	BRACKET ASSY TOW 200 CHASSIS	1
4	03-0258L	BRACKET ASSY TOW 200 CHASSIS	1
5	M12X40X1.75	M12 X 40MM X 1.75 BOLT	6
6	M12 FW X 37	M12 FLAT WASHER X 37	6
7	M12 SW	M12 SPRING WASHER	18
8	M12X30X1.75	M12 X 30MM X 1.75 BOLT	6
9	M12 FW	M12 FLAT WASHER STANDARD	14
10	M10X1.25N	M10 X 1.25 NUT	8
11	M10SW	M10 SPRING WASHER	8
12	M10FWX25	M10 FLAT WASHER X 25MM WIDE	8
13	M12X40X1.25	M12 X 50 X 1.25 BOLT	6
14	M12X1.25N	M12 X 1.25 NUT	2
15	PINCH WELD RUBBER TRIM	RUBBER TRIM 500MM	1
16	M5X15 PSCREW	M5 X 15 PH SCREW	3
17	M5 FN	M5 FLANGE NUT	3



ITEM NO.	PART NUMBER	DESCRIPTION	QTY.
1	TL-FB-200C-ASM1	TOYOTA 200 CLASSIC WELDED ASSY	1
2	09-0082	PANEL CENTER 200	1
3	09-0084R	PANEL WING TOYOTA 200	1
4	09-0084L	PANEL WING TOYOTA 200	1
5	M8 FW X 22	FLAT WASHER 8MM LARGE	13
6	M8X25 BHCS	M8 BUTTON HEAD CAP SCREW	13
7	M8 FN	FLANGE NUT M8	4
8	M6X20	M6 X 20 BOLT	2
9	M6 FW	M6 FLAT WASHER	2
10	M6 FN	FLANGE NUT M6	2
11	CARWAY LED	FOG DRL LIGHT	2
12	AUTO 8 LED	LED INDICATOR/PARKER	2
13	M5X10 PSCREW	M5 X 10 PH SCREW	6
14	12-0010	COVER PC FOG LIGHT	2
15	M5X15 PSCREW	M5 X 15 PH SCREW	8



ITEM NO.	PART NUMBER	DESCRIPTION	QTY.
1	TL-FB-200U-ASM1	TOYOTA 200 URBAN WELDED ASSY	1
2	09-0082	PANEL CENTER 200	1
3	09-0084R	PANEL WING TOYOTA 200	1
4	09-0084L	PANEL WING TOYOTA 200	1
5	M8 FW X 22	FLAT WASHER 8MM LARGE	13
6	M8X25 BHCS	M8 BUTTON HEAD CAP SCREW	13
7	M8 FN	FLANGE NUT M8	4
8	M6X20	M6 X 20 BOLT	2
9	M6 FW	M6 FLAT WASHER	2
10	M6 FN	FLANGE NUT M6	2
11	CARWAY LED	FOG DRL LIGHT	2
12	AUTO 8 LED	LED INDICATOR/PARKER	2
13	M5X10 PSCREW	M5 X 10 PH SCREW	6
14	12-0010	COVER PC FOG LIGHT	2
15	M5X15 PSCREW	M5 X 15 PH SCREW	8





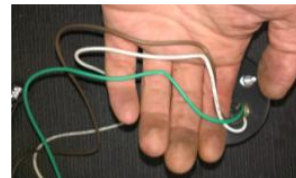
## Step 1

Remove plastic panels under bumper, bumper, fog lights if fitted, grille and steel bumper support. Remove front bolts from lower steel bash plate and retain. Loosen other bash plate bolts only. Remove parking sensors if fitted and retain.



## Step 2

Remove plastic cover from top of radiator. Cut supplied indicator/parker light wires in half. Locate park, indicator and earth on Toyota lights and attach wires that were cut using soldering iron or Narva 56015BL connectors. Once this is done attached female spade terminals to other end of wires.



## Step 3

Trim edge of outer plastic bumper mounts as shown by the white line.



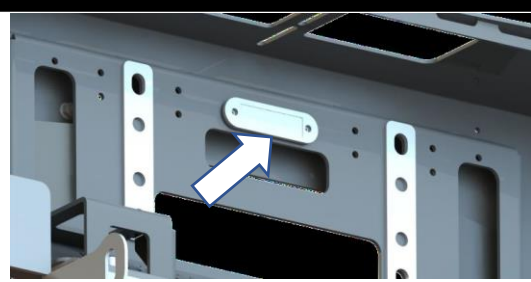
## Step 4

Fit supplied fog light and park/indicator to bar. The fog lights will use the longer M5 fasteners supplied in the bar fitting kit. DO NOT USE SUPPLIED FASTENERS IN FOG LIGHT BOX. Fit centre tube to bar using M12 socket head cap screws and spring washers.



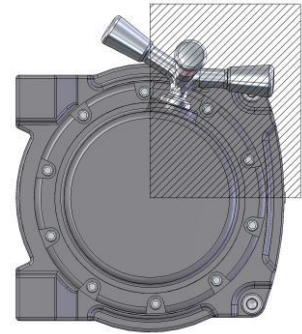
## Step 5

Install optional winch light and route cable to either side of bar. Run cable through access (arrow) hole and cable tie to holes provided.



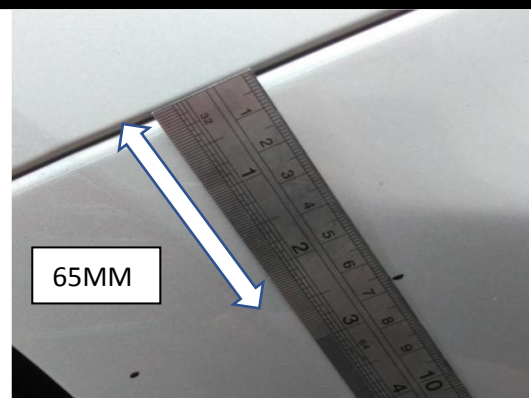
## Step 6

If fitting a winch do so now. The clutch handle must be rotated into a position as shown by the shaded area.



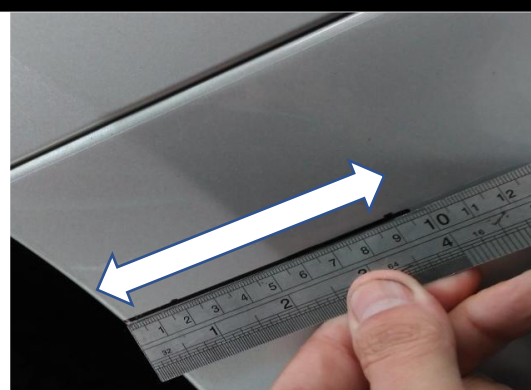
## Step 7

**2008-2011 BUMPER CUT.** Measure down from the join line of bumper to guard 65mm and mark two points. Repeat for LH side.



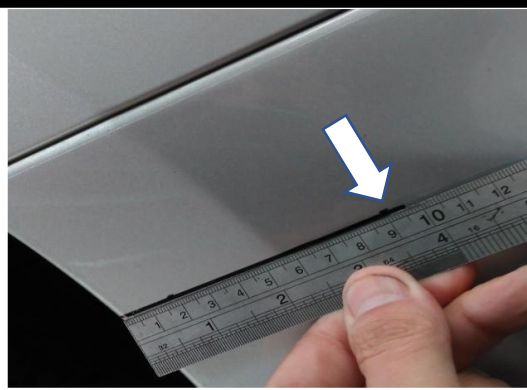
## Step 8

Mark a line across the two points 95mm from the edge of the wheel arch. Repeat for LH side.



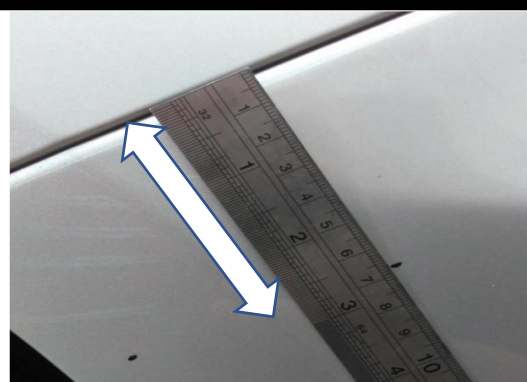
## Step 9

Joint the end of the two 95mm points with masking tape along the front of the bumper. Be sure to eye-ball the tape to make sure it runs level across the bumper. Use masking tape above all cut lines to protect the paint. Cut using air hacksaw or grinder. Clean and de-burr.



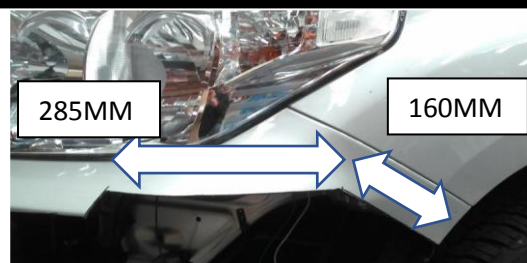
## Step 10

**2012-15 BUMPER CUT.** Measure down from the join line of bumper to guard 65mm and mark two points. Repeat for LH side.



## Step 11

Joint the two marked points with a line that is 160mm from the edge of the wheel arch. Mark a line as horizontal as possible from the end point of the 160mm line across 285mm. LH side shown.



## Step 12

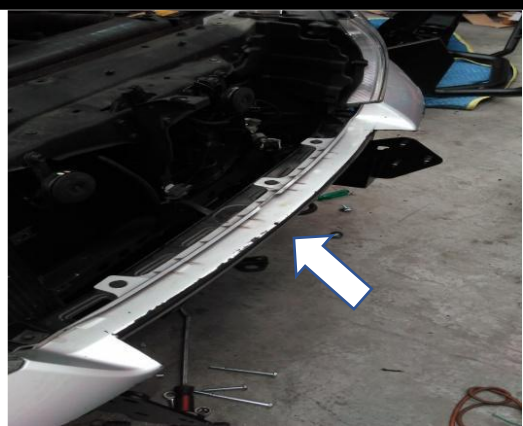
From the endpoint of the 285mm line mark another line, straight down, 60mm. Repeat for opposite side. From the lower end point of the 60mm line mask across the bumper with masking tape. Again, keep tape above cut line to protect paint. Cut marked areas using air hacksaw or grinder. De-burr when complete.





## Step 13

**ALL MODELS.** Cut a recess in the middle of the plastic bumper as shown. This will allow better viewing of the winch and better access via the clutch handle hole. De-burr when complete.



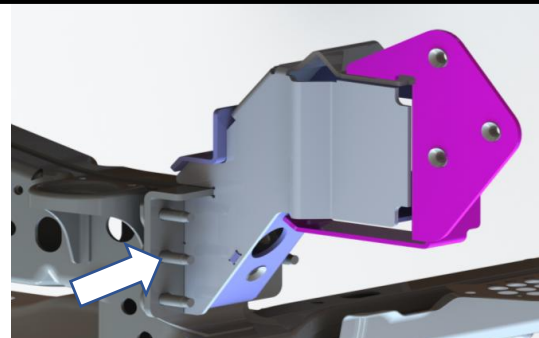
## Step 14

**ALL MODELS.** Remove plastic air dams from above chassis rails and around automatic transmission cooler. Place the bumper back onto the vehicle and fit supplied pinch weld rubber trim to the outer cut lines.



## Step 15

Fit impact absorber brackets loosely to chassis using supplied M10 x 1.25 nuts, spring washers and flat washers.



## Step 16

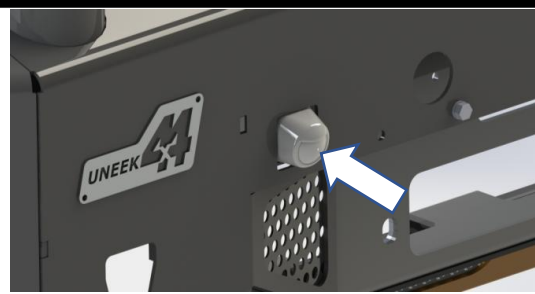
Fit lower impact braces using M12 x 40 fine pitch bolts, spring washers, flat washers and nuts if required. Choose whether to refit tie down point or recovery eye. Square hitch is on RH side. Fit M12 x 30 x 1.75 bolts, spring washers and flat washers into side and front lower face of impact absorber. Tighten all bolts.



M10-44Nm M12-77Nm

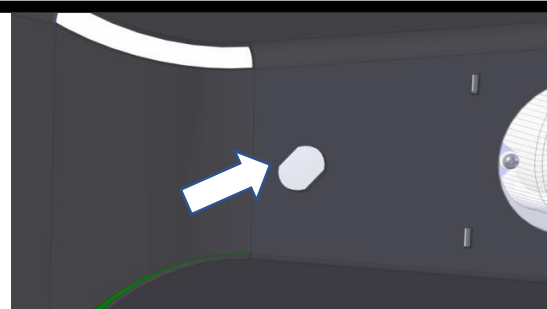
## Step 17

If camera is fitted cut and extend wires and attach camera to bar from behind using M5 screws and M5 flange nuts supplied.



## Step 18

If parking sensors are fitted locate punch out section on outside of wing. Punch out small section and touch up with paint. Fit parking sensors.



## Step 19

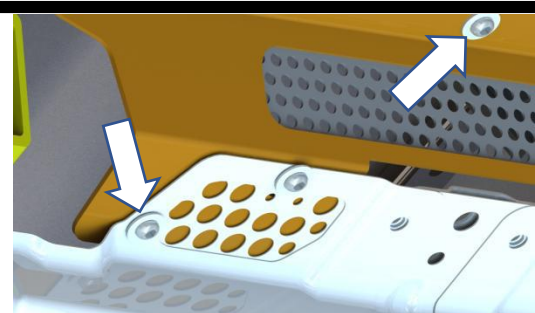
With the assistance of another person lift bar onto vehicle and secure using M10 x 40 x 1.75 bolts, spring washers and large flat washers. Adjust bar so a minimum of 10mm gap is achieved and tighten all bolts.



M12-77Nm

## Step 20

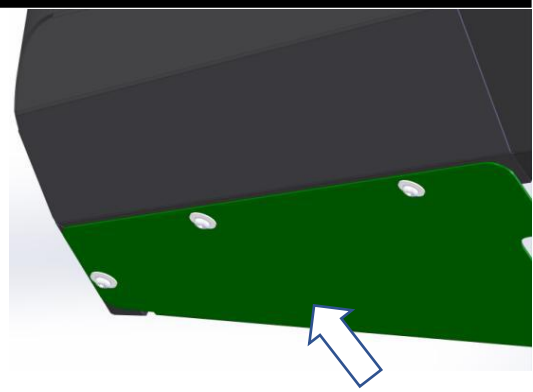
Complete all wiring of winch, driving light, camera and or parking sensors. Attach middle stone panel above original using M8 button head screws and flat washers. When complete tighten original panel back to chassis.



M8-22Nm

## Step 21

Attach outer panels to wings using M8 button head screws and flat washers. Mark a line on the plastic inner guard and cut. Place plastic inner guard over the rear lip of the stone guard. Wipe bar clean and re-fit any engine bay panels if removed. Test all circuits and lights.



M8-22Nm

# ***Finished Product***

---



Revised: 21/08/2019

***Australia's Best  
Off Road Products  
Created... Not Cloned***

20 Gateway Drive, Carrum Downs, VIC, 3201

1800 806 952

[www.uneek4x4.com.au](http://www.uneek4x4.com.au)

