

**UNEK4**  
AUSTRALIA  
OFF ROAD ACCESSORIES

**SKU: FJ-FB-U-ASM0**



***Fitting Instructions***

***Toyota FJ Cruiser 2006 on  
Urban and Winch Bumper***

***Australia's Best Off Road Products  
Created... Not Cloned***

# Contents

---

<b>WHY UNEEK</b>	<b>3</b>
<b>IMPORTANT INFORMATION</b>	<b>4</b>
<b>COMPONENTS AND PARTS</b>	<b>5</b>
<b>COMPONENTS AND PARTS</b>	<b>6</b>
<b>STEP 1</b>	<b>7</b>
<b>STEP 2</b>	<b>7</b>
<b>STEP 3</b>	<b>7</b>
<b>STEP 4</b>	<b>7</b>
<b>STEP 5</b>	<b>8</b>
<b>STEP 6</b>	<b>8</b>
<b>STEP 7</b>	<b>8</b>
<b>STEP 8</b>	<b>8</b>
<b>STEP 9</b>	<b>9</b>
<b>STEP 10</b>	<b>9</b>
<b>STEP 11</b>	<b>9</b>
<b>STEP 12</b>	<b>9</b>
<b>STEP 13</b>	<b>10</b>
<b>STEP 14</b>	<b>10</b>
<b>STEP 15</b>	<b>10</b>
<b>FINISHED PRODUCT</b>	<b>11</b>

# ***Why Uneek***

---

## ***Australian Designed and Built***

All our products are designed and manufactured right here in Australia, allowing us to have better lead times and better quality control than companies manufacturing overseas. By supporting us you're supporting to grow the Australian economy and our brand.

## ***Uneek Styling***

We do not design our bars to look the same across the vehicle range. We fully develop our own product to individually suit each vehicle. We take time in designing from scratch and then test all our bars to comply with all relevant ADRs and Australian Standards.

## ***Lightweight Through Smart Engineering***

Having a steel bar doesn't mean you have to add more weight than is required to the front of your vehicle. Our engineering practises ensure we have the right protection, designed the right way to ensure protection is at its maximum and weights at its minimum.

## ***Proven Off Road***

We take our products out and test them right here in the heart of our country in our Australian conditions so we know our products can withstand anything you throw at them.

## ***Increased Approach Angles***

Our bars are designed to give you the best advantage while off road, with increased approach angles means you can tackle those tough and steep angles better than you could with the original setup or other alternatives.

## ***Warranty***

Uneek 4x4 back itself as Australia's leading steel bull bar manufacturer. This is why we provide you with the best steel bar warranty in Australia - 5 years.

# Important Information

---



**PLEASE READ BEFORE INSTALLATION.**

- When installed in accordance with these instructions, the front protection bar does not affect the operation of the vehicles SRS airbags.
- This product must be installed exactly as per these instructions using only hardware supplied.
- Take a few moments to read instructions thoroughly before beginning work.
- In the event of damage to any bar component please contact Uneek 4x4 in regards to repair/replacement of components.
- Do not use this product for any vehicle make or model other than that specified on these instructions.
- Do not remove labels from this product.
- This product and its fixings must not be modified in any way unless stated in these fitting instructions.
- The installation of this product is recommended for trained personnel.
- These instructions are correct at time of publication. Uneek 4x4 cannot be held responsible for the impact of any changes subsequently made by the vehicle manufacturer.
- During installation it is the duty of the installer to check correct operation/clearances of all components.
- Supplied tow points are designed as tow points only. Use in a recovery operation will be at operator's risk.
- Installation time: 3 hours
- Vehicle specific notes: A flip up license plate kit may be required. Optional Narva 90862 license plate light to be used for winch light.



**EYE & EAR PROTECTION REQUIRED**



**DRILLING REQUIRED**



**TWO PERSON LIFT REQUIRED**



**TORQUE SETTING**



**CUTTING OR GRINDING REQUIRED**

## FASTENER TORQUE SETTINGS:

M6 – 9Nm (4lb ft)

M8 – 22Nm (16lb ft)

M10 – 44Nm (32lb ft)

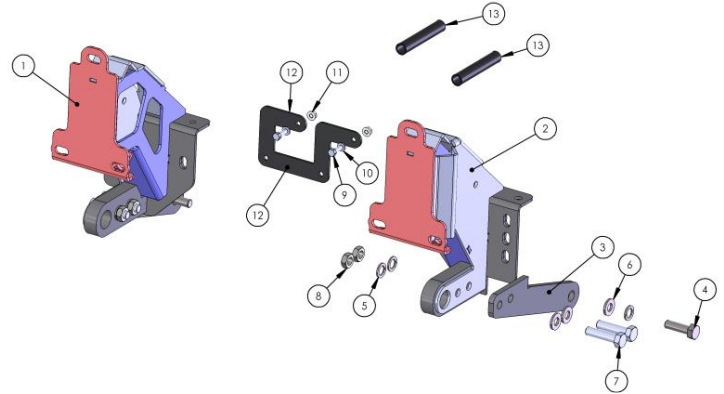
M12 – 77Nm (57lb ft)

## TOOLS REQUIRED:

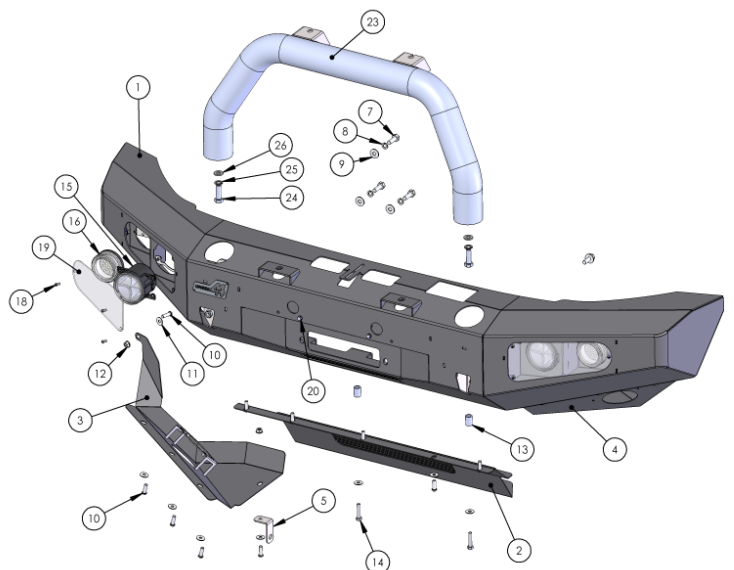
Basic tool kit, soldering iron or electrical in-line connectors, male and female spade terminals.

# Components and parts

ITEM NO.	PART NUMBER	DESCRIPTION	QTY.
1	03-0122R	BRACKET ASSY IMPACT FJ	1
2	03-0122L	BRACKET ASSY IMPACT FJ	1
3	04-0092	PLATE FJ TOW BRACE	2
4	M12X40X1.25	M12 X 40 X 1.25 BOLT	2
5	M12 SW	M12 SPRING WASHER	6
6	M12 FW	M12 FLAT WASHER STANDARD	6
7	M12X40X1.75	M12 X 40 X 1.75 BOLT	4
8	M12X1.75N	M12 X 1.75 NUT	4
9	M6X20	M6 X 20 BOLT	2
10	M6 FW	M6 FLAT WASHER	2
11	M6 FN	FLANGE NUT M6	2
12	04-0170	PLATE FJ POWER STEER	1
13	12-0016	HOSE HEATER 13MM X 100	2

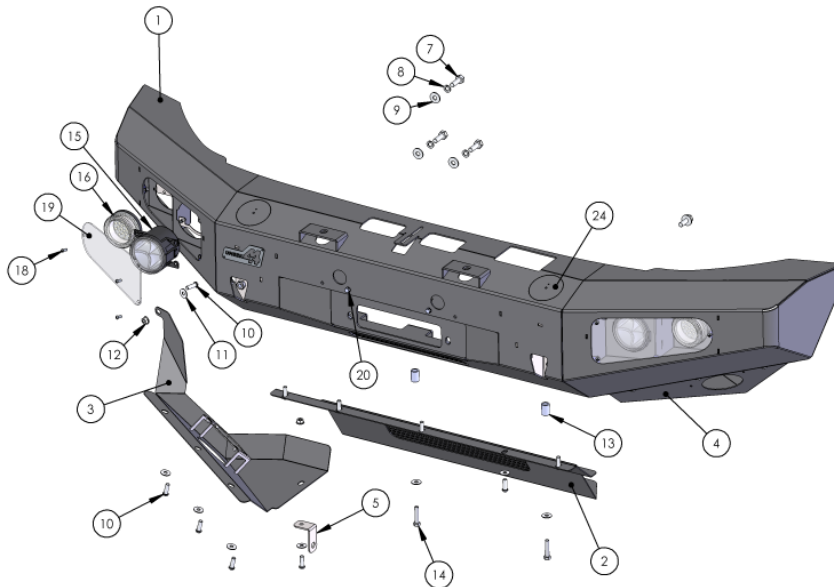


ITEM NO.	PART NUMBER	DESCRIPTION	QTY.
1	FJ-FB-U-ASM1	FJ CRUISER WELDED ASSEMBLY	1
2	09-0037	PANEL ASSY CENTER FJ	1
3	09-0039R	PANEL ASSY OUTER FJ	1
4	09-0039L	PANEL ASSY OUTER FJ	1
5	03-0126	BRACKET STONE GUARD FJ	2
6	M5 NUTSERT	NUTSERT 5MM	14
7	M10X30	M10 X 1.5 X 30MM BOLT	6
8	M10SW	M10 SPRING WASHER	6
9	M10FWX25	M10 FLAT WASHER X 25MM WIDE	6
10	M8X25 BHCS	M8 BUTTON HEAD CAP SCREW	15
11	M8 FW X 22	FLAT WASHER 8MM LARGE	17
12	M8 FN	FLANGE NUT M8	4
13	05-0005	TUBE CHASSIS FJ	2
14	M8X40	M8 X 40 BOLT	2
15	CARWAY LED	FOG DRL LIGHT	2
16	AUTO 8 LED	LED INDICATOR/PARKER	2
17	M5X15 PSCREW	M5 X 15 PH SCREW	8
18	M5X10 PSCREW	M5 X 10 PH SCREW	6
19	12-0010	COVER PC FOG LIGHT	2
20	M6X20	M6 X 20 BOLT	2
21	M6 FW	M6 FLAT WASHER	2
22	M6 FN	FLANGE NUT M6	2
23	05-0064	TUBE ASSY FJ URBAN	1
24	M12X40X1.75	M12 X 40MM X 1.75 BOLT	2
25	M12 SW	M12 SPRING WASHER	2
26	M12 FW	M12 FLAT WASHER STANDARD	2



# Components and parts

ITEM NO.	PART NUMBER	DESCRIPTION	QTY.
1	FJ-FB-U-ASM1	FJ CRUISER WELDED ASSEMBLY	1
2	09-0037	PANEL ASSY CENTER FJ	1
3	09-0039R	PANEL ASSY OUTER FJ	1
4	09-0039L	PANEL ASSY OUTER FJ	1
5	03-0126	BRACKET STONE GUARD FJ	2
6	M5 NUTSERT	NUTSERT 5MM	14
7	M10X30	M10 X 1.5 X 30MM BOLT	6
8	M10SW	M10 SPRING WASHER	6
9	M10FWX25	M10 FLAT WASHER X 25MM WIDE	6
10	M8X25 BHCS	M8 BUTTON HEAD CAP SCREW	15
11	M8 FW X 22	FLAT WASHER 8MM LARGE	17
12	M8 FN	FLANGE NUT M8	4
13	05-0005	TUBE CHASSIS FJ	2
14	M8X40	M8 X 40 BOLT	2
15	CARWAY LED	FOG DRL LIGHT	2
16	AUTO 8 LED	LED INDICATOR/PARKER	2
17	M5X15 PSCREW	M5 X 15 PH SCREW	8
18	M5X10 PSCREW	M5 X 10 PH SCREW	6
19	12-0010	COVER PC FOG LIGHT	2
20	M6X20	M6 X 20 BOLT	2
21	M6 FW	M6 FLAT WASHER	2
22	M6 FN	FLANGE NUT M6	2
24	04-0097	PLATE ASSY FJ PLUG	2





## Step 1

Remove grille, plastic panels under bumper and bumper. Remove two front bolts from lower steel bash plate and retain. Loosen other bash plate bolts only.



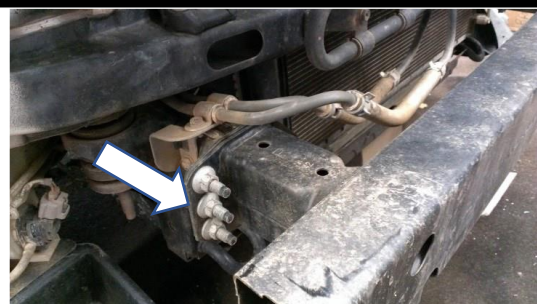
## Step 2

Remove outer plastic bumper mounts and thin sheet metal bumper supports.



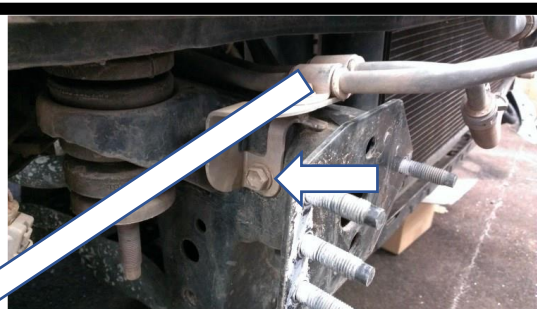
## Step 3

Remove crash beam from vehicle and retain mounting nuts.



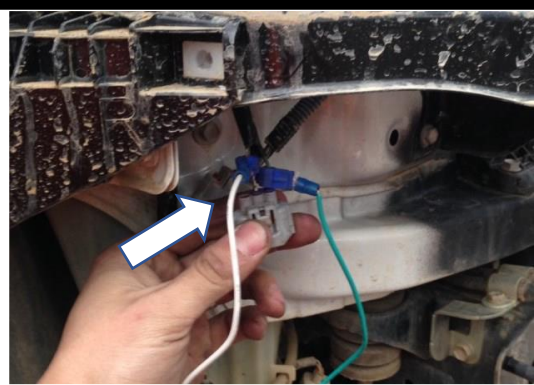
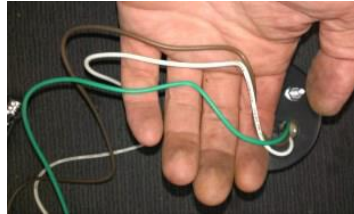
## Step 4

Remove power steer line mounting bracket and discard. Very carefully cut a slit in the two rubber hoses supplied and place over the lines in place of this mounting bracket.



## Step 5

Cut the wires on the supplied parker/indicator in half. Locate the Toyota park/indicator wires and connect these cut wires using in-line connectors (Narva 56015BL) or a soldering iron. On the LED White is earth, Brown is parker and Green is indicator.



## Step 6

Fit the supplied fog light loom to the vehicle at this stage. If running the optional rock lights fit this loom also before attaching the bar. To mount rock lights to outer guards, punch out the laser cut circle and mount lights.



## Step 7

Remove power steer lines from the body and retain bolts. Fit supplied bracket as shown inset using bolts retained and M6 fasteners supplied. If lines need to be tweaked do so gently.



## Step 8

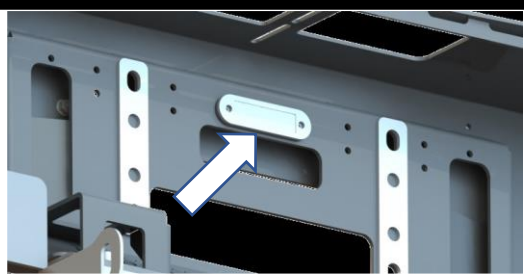
Fit supplied fog light and park/indicator to bar. The fog lights will use the longer M5 fasteners supplied in the bar fitting kit. DO NOT USE SUPPLIED FASTENERS IN FOG LIGHT BOX. Fit centre tube to bar (if supplied) using M12 x 40 bolts, M12 spring washers and M12 flat washers.





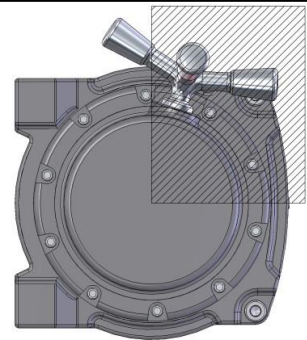
## Step 9

Install optional winch light (Narva 90862) and route cable to either side of bar. Run cable through access (arrow) hole and cable tie to holes provided.



## Step 10

If fitting a winch do so now. The clutch handle will need to be positioned in an area as shown.



## Step 11

Loosely fit impact absorbers to chassis using original nuts. Make sure power steer lines clear RH side impact absorber.

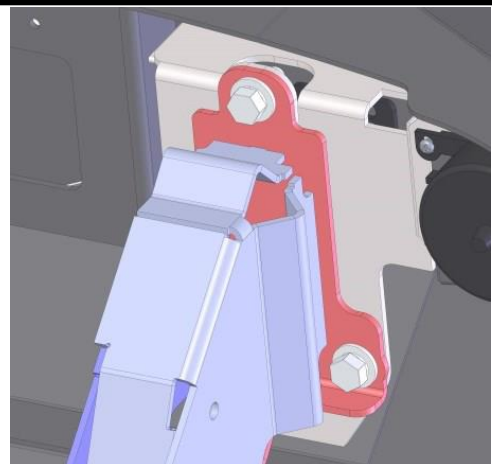


## Step 12

With the help of another person lift bar onto mounts and secure using M10 x 30 bolts, spring washers and flat washers. Adjust bar to a suitable position and tighten all bolts. Re fit vehicle grille.



M10-44Nm

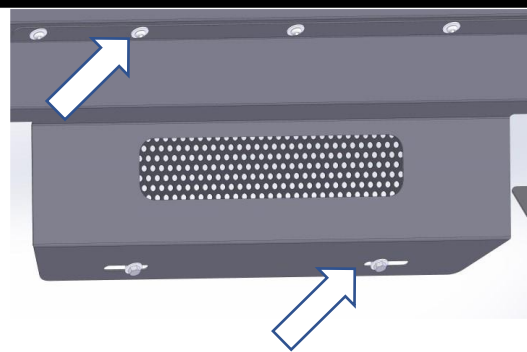


## Step 13

After securing winch cables etc mount centre stone guard to bar using M8 cap screws and M8 flat washers. Secure to chassis with M8 x 40 bolts and M8 flat washers. NOTE: The spacer tubes are mounted between the supplied guard and the Toyota guard. When all bolts are in tighten.



M8-22Nm

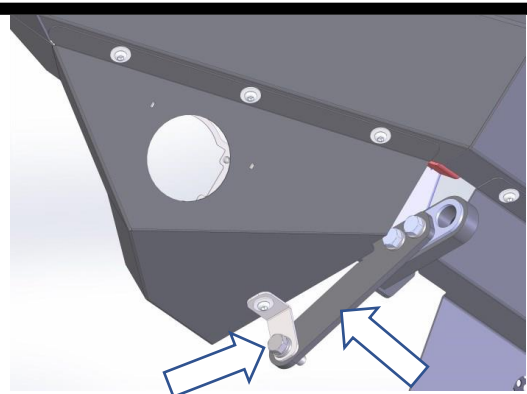


## Step 14

Secure outer guards, tow point braces and outer guard mounting tabs to bar. Loosely attach tow point brace to absorbers using M12 x 40 bolts, M12 spring washers, M12 flat washers and M12 nuts. Attach guards using M8 button head screws and M8 flat washers. Bolt hole in wheel arch area uses M8 bolt, M8 flat washer and M8 flange nut. Secure small tab using M8 button head screw, M8 flat washer and M8 flange nut. Use M12 x 40 x 1.25 fine thread bolt, M12 spring washer and M12 flat washer to secure into chassis. Tighten when done.

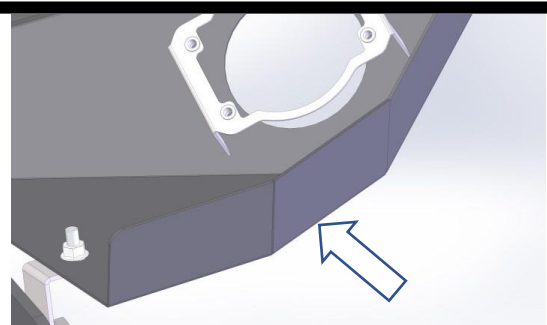


M12-77Nm M8-22Nm



## Step 15

Attach loom to rock lights if fitted. Cut inner guard to suit profile of lower edge of outer stone guard. Clean up edge and push inside the lip of stone guard. Do not secure using screws or bolts. When complete wipe bar down using a soft clean rag. Secure license plate directly to bar or by using the optional flip up kit.



# ***Finished Product***

---



Revised: 20/08/2019

***Australia's Best  
Off Road Products  
Created... Not Cloned***

20 Gateway Drive, Carrum Downs, VIC, 3201

1800 806 952

[www.uneek4x4.com.au](http://www.uneek4x4.com.au)

