

**UNEEK44**  
AUSTRALIA  
OFF ROAD ACCESSORIES

**SKU: TH-S-15-ASM0**



***Fitting Instructions***  
**Toyota Hilux 2015 on**  
**Rock Sliders**

**Australia's Best Off Road Products**  
**Created... Not Cloned**

# **Contents**

---

<b>WHY UNEEK</b>	<b>3</b>
<b>IMPORTANT INFORMATION</b>	<b>4</b>
<b>COMPONENTS AND PARTS</b>	<b>5</b>
<b>STEP 1</b>	<b>6</b>
<b>STEP 2</b>	<b>6</b>
<b>STEP 3</b>	<b>6</b>
<b>STEP 4</b>	<b>7</b>
<b>STEP 5</b>	<b>7</b>
<b>STEP 6</b>	<b>7</b>
<b>STEP 7</b>	<b>7</b>
<b>FINISHED PRODUCT</b>	<b>8</b>

# ***Why Uneek***

---

## ***Australian Designed and Built***

All our products are designed and manufactured right here in Australia, allowing us to have better lead times and better quality control than companies manufacturing overseas. By supporting us you're supporting to grow the Australian economy and our brand.

## ***Uneek Styling***

We do not design our bars to look the same across the vehicle range. We fully develop our own product to individually suit each vehicle. We take time in designing from scratch and then test all our bars to comply with all relevant ADRs and Australian Standards.

## ***Lightweight Through Smart Engineering***

Having a steel bar doesn't mean you have to add more weight than is required to the front of your vehicle. Our engineering practises ensure we have the right protection, designed the right way to ensure protection is at its maximum and weights at its minimum.

## ***Proven Off Road***

We take our products out and test them right here in the heart of our country in our Australian conditions so we know our products can withstand anything you throw at them.

## ***Increased Approach Angles***

Our bars are designed to give you the best advantage while off road, with increased approach angles means you can tackle those tough and steep angles better than you could with the original setup or other alternatives.

## ***Warranty***

Uneek 4x4 back itself as Australia's leading steel bull bar manufacturer. This is why we provide you with the best steel bar warranty in Australia - 5 years.

# Important Information

---



## PLEASE READ BEFORE INSTALLATION.

- When installed in accordance with these instructions, the step does not affect the operation of the vehicles SRS airbags.
- This product must be installed exactly as per these instructions using only hardware supplied.
- Take a few moments to read instructions thoroughly before beginning work.
- In the event of damage to any bar component please contact Uneek 4x4 in regards to repair/replacement of components.
- Do not use this product for any vehicle make or model other than that specified on these instructions.
- Do not remove labels from this product.
- This product and its fixings must not be modified in any way unless stated in these fitting instructions.
- The installation of this product is recommended for trained personnel.
- These instructions are correct at time of publication. Uneek 4x4 cannot be held responsible for the impact of any changes subsequently made by the vehicle manufacturer.
- During installation it is the duty of the installer to check correct operation/clearances of all components.
- Installation time: 2 Hours



**EYE & EAR PROTECTION REQUIRED**



**DRILLING REQUIRED**



**TWO PERSON LIFT REQUIRED**



**TORQUE SETTING**



**CUTTING OR GRINDING REQUIRED**

### FASTENER TORQUE SETTINGS:

M6 – 9Nm (4lb ft)

M8 – 22Nm (16lb ft)

M10 – 44Nm (32lb ft)

M12 – 77Nm (57lb ft)

### TOOLS REQUIRED:

Basic tool kit with sockets, spanners and hex keys. Power drill with 5mm and 9mm bit, rubber mallet, centre punch and hammer.

# ***Components and parts***

---

ITEM NO.	PART NUMBER	DESCRIPTION	QTY.
1	03-0436	HILUX STEP STEP STRAP ASSEM	4
2	04-0276	M12 SMALL NUT PLATE ASSY	4
3	04-0278	SIDE STEP SHIM PLATE	10
4	09-0028	PANEL TREAD SLIDER HILUX 05	2
5	JK-S-10	LOGO PLATE 2	2
6	TH-S-15-ASML	2015 HILUX SIDE STEP	1
7	TH-S-15-ASMR	2015 HILUX SIDE STEP	1

ITEM NO.	PART NUMBER	DESCRIPTION	QTY.
1	04-0280	M14 X30X2 CAM BOLT	8
2	M6X16	BHCS M6 BUTTON HEAD CAP SCREW	16
3	M6 FN	FLANGE NUT M6	16
4	M12X120X1.75	M12 X 120MM X 1.75 BOLT	2
5	M12	Nyloc nut M12 NYLOC NUT	4
6	M12	FW X 37 M12 FLAT WASHER LARGE	10
7	M12X30X1.75	BOLT M12 1.75 PITCH	2
8	M14	NYLOC NYLOC SELF LOCKING NUT, ST STL A2	8
9	M14	WASHER M14 WASHER Z/P	8
10	M12X140X1.75	M12 X 140 X 1.75 BOLT	2
10A	M12x175x1.75	M12 X 175 X 1.75 BOLT	2

## Step 1

Remove OE steps if fitted.

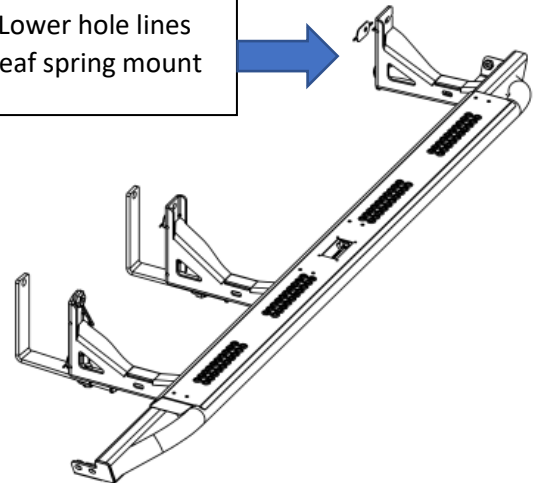
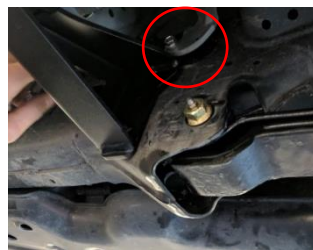
Remove M8 bolt from rear handbrake cable just above rear leaf spring mounts. Keep this bolt.



## Step 2

Rear of vehicle. Lower hole lines up with hole in leaf spring mount

Hold step up to side of vehicle. Mount rear first with bolt from hand brake cable.

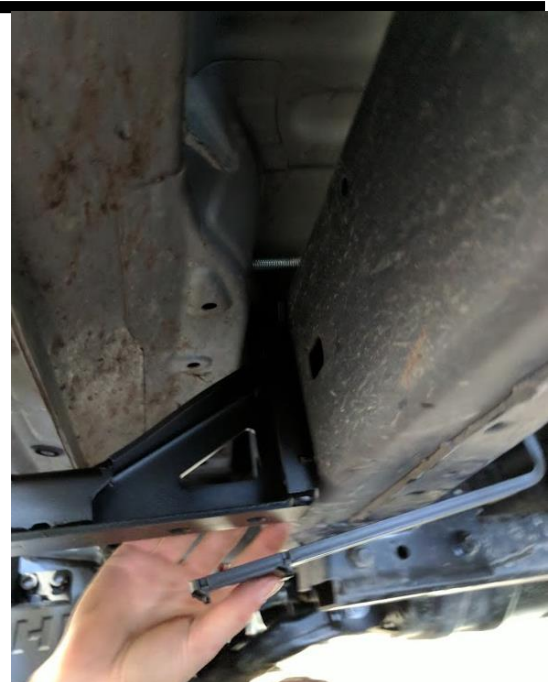


## Step 3

Fit strap mounts.

On front mount use M12 x175mm or M12 x140mm (depending on model of vehicle) bolt over the top of chassis. Secure with M12 washer and nyloc. Do not tighten, just hang mount there.

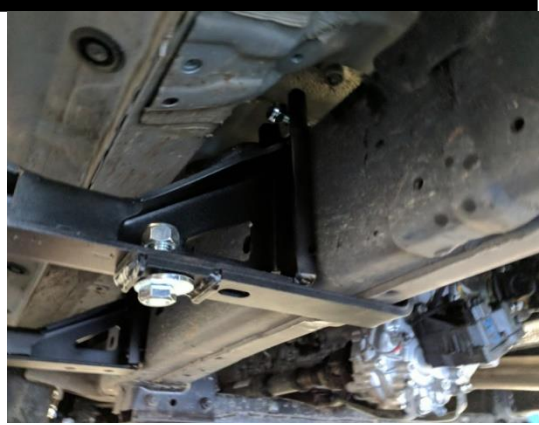
On middle mount use M12 x120mm bolt over the top of chassis. Secure with M12 washer and nyloc. Do not tighten, just hang mount there.



---

## Step 4

On front and middle mount fit cam bolts.  
2 Cam bolts per mount.



---

## Step 5

Slip M12 nut plate in beside leaf spring mount  
and secure with M12x30 bolt and washer.



---

## Step 6

Tighten all bolts. Use tension on the lower cam bolts to pull the strap as tight as possible against the chassis. This is critical for the strength of the step.

---

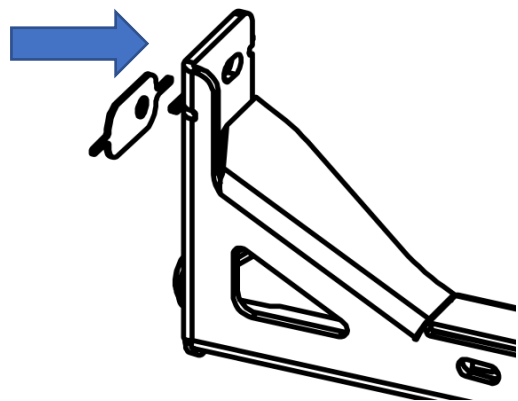
## Step 7

Check alignment of the steps.

Steps should be between 20 and 30mm clear of the pinch weld on the sill.

If desired, shims can be installed either upper or lower to adjust steps.

Bend tabs into slots on mounts to lock shims in.



# **Finished Product**





Revised: 15/08/2019

***Australia's Best  
Off Road Products  
Created... Not Cloned***

20 Gateway Drive, Carrum Downs, VIC, 3201

1800 806 952

[www.uneek4x4.com.au](http://www.uneek4x4.com.au)

