

UNEK4
AUSTRALIA
OFF ROAD ACCESSORIES

SKU: TH-FB-05X-ASM0



Fitting Instructions

***Toyota Hilux/Vigo 2005 on
Classic, Urban and Winch Bumper***

***Australia's Best Off Road Products
Created... Not Cloned***

Contents

WHY UNEEK	3
IMPORTANT INFORMATION	4
COMPONENTS AND PARTS	5
COMPONENTS AND PARTS	6
STEP 1	7
STEP 2	7
STEP 3	7
STEP 4	7
STEP 5	8
STEP 6	8
STEP 7	8
STEP 8	8
STEP 9	9
STEP 10	9
STEP 11	9
STEP 12	9
STEP 13	9
STEP 14	10
STEP 15	10
STEP 16	10
STEP 17	11
STEP 18	11
STEP 19	11
STEP 20	12
STEP 21	12
STEP 22	12
STEP 23	12
FINISHED PRODUCT	13

Why Uneek

Australian Designed and Built

All our products are designed and manufactured right here in Australia, allowing us to have better lead times and better quality control than companies manufacturing overseas. By supporting us you're supporting to grow the Australian economy and our brand.

Uneek Styling

We do not design our bars to look the same across the vehicle range. We fully develop our own product to individually suit each vehicle. We take time in designing from scratch and then test all our bars to comply with all relevant ADRs and Australian Standards.

Lightweight Through Smart Engineering

Having a steel bar doesn't mean you have to add more weight than is required to the front of your vehicle. Our engineering practises ensure we have the right protection, designed the right way to ensure protection is at its maximum and weights at its minimum.

Proven Off Road

We take our products out and test them right here in the heart of our country in our Australian conditions so we know our products can withstand anything you throw at them.

Increased Approach Angles

Our bars are designed to give you the best advantage while off road, with increased approach angles means you can tackle those tough and steep angles better than you could with the original setup or other alternatives.

Warranty

Uneek 4x4 back itself as Australia's leading steel bull bar manufacturer. This is why we provide you with the best steel bar warranty in Australia - 5 years.

Important Information



PLEASE READ BEFORE INSTALLATION.

- When installed in accordance with these instructions, the front protection bar does not affect the operation of the vehicles SRS airbags.
- This product must be installed exactly as per these instructions using only hardware supplied.
- Take a few moments to read instructions thoroughly before beginning work.
- In the event of damage to any bar component please contact Uneek 4x4 in regards to repair/replacement of components.
- Do not use this product for any vehicle make or model other than that specified on these instructions.
- Do not remove labels from this product.
- This product and its fixings must not be modified in any way unless stated in these fitting instructions.
- The installation of this product is recommended for trained personnel.
- These instructions are correct at time of publication. Uneek 4x4 cannot be held responsible for the impact of any changes subsequently made by the vehicle manufacturer.
- During installation it is the duty of the installer to check correct operation/clearances of all components.
- Supplied tow points are designed as tow points only. Use in a recovery operation will be at operator's risk.
- Installation time: 3-4 hours
- Vehicle specific notes: A flip up license plate kit may be required. Optional Narva 90862 license plate light.



EYE & EAR PROTECTION REQUIRED



DRILLING REQUIRED



TWO PERSON LIFT REQUIRED



TORQUE SETTING



CUTTING OR GRINDING REQUIRED

FASTENER TORQUE SETTINGS:

M6 – 9Nm (4lb ft)

M8 – 22Nm (16lb ft)

M10 – 44Nm (32lb ft)

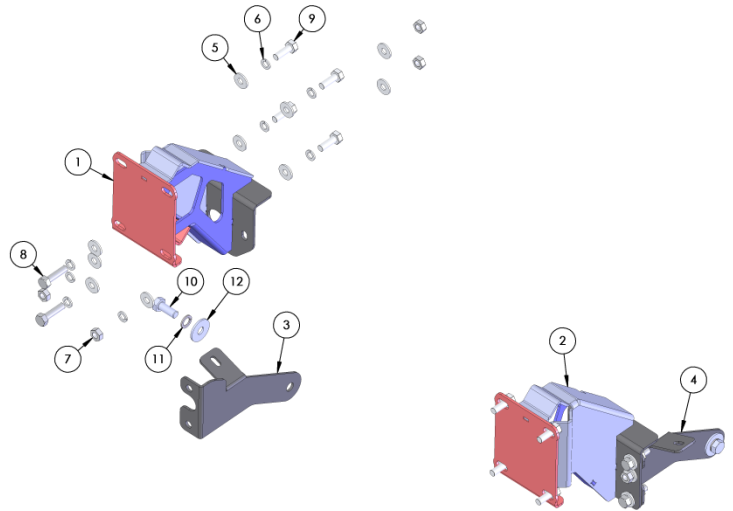
M12 – 77Nm (57lb ft)

TOOLS REQUIRED:

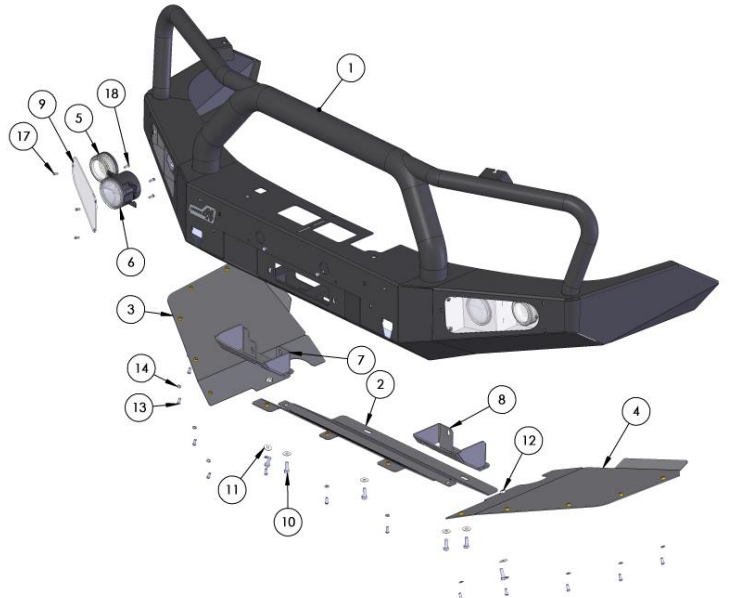
Basic tool kit, soldering iron or electrical in-line connectors, male and female spade terminals, jigsaw or air hacksaw, drill and drill bit.

Components and parts

ITEM NO.	PART NUMBER	DESCRIPTION	QTY.
1	03-0063R	BRACKET ASSY IMPACT HILUX 05	1
2	03-0063L	BRACKET ASSY IMPACT HILUX 05	1
3	03-0064R	BRACKET CHASSIS BRACE HILUX 05	1
4	03-0064L	BRACKET CHASSIS BRACE HILUX 05	1
5	M10FWX25	M10 FLAT WASHER X 25MM WIDE	20
6	M10SW	M10 SPRING WASHER	16
7	M10X1.5N	M10 X 1.5 NUT	8
8	M10X40X1.25	BOLT M10 X 40	4
9	M10X30	M10 X 1.5 X 30MM BOLT	8
10	M12X30X1.25	M12 X 30 X 1.25 FINE PITCH BOLT	2
11	M12 SW	M12 SPRING WASHER	2
12	M12 FW X 37	M12 FLAT WASHER X 37	2

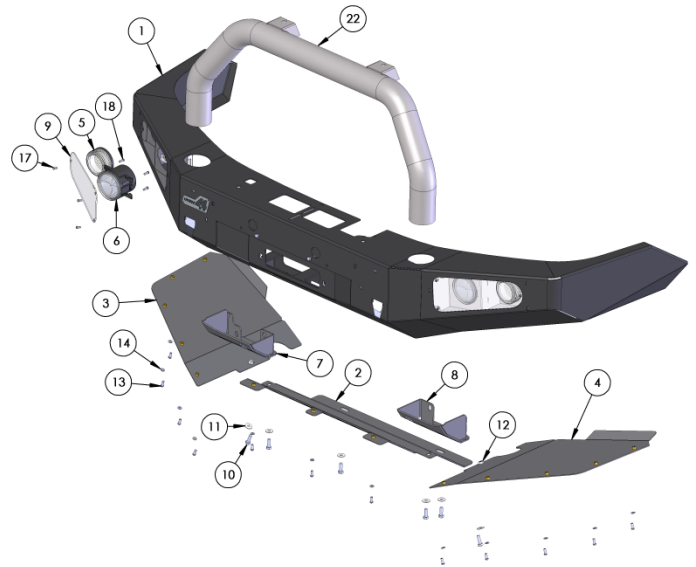


ITEM NO.	PART NUMBER	DESCRIPTION	QTY.
1	TH-FB-05C-ASM1	HILUX 05 WELDED ASSY	1
2	09-0016	PANEL ASSY CENTER HILUX 05	1
3	09-0018R	PANEL ASSY OUTER HILUX 05	1
4	09-0018L	PANEL ASSY OUTER HILUX 05	1
5	AUTO 8 LED	LED INDICATOR/PARKER	2
6	LED FOG LIGHT	LED FOG LIGHT	2
7	03-0058R	BRACKET CHASSIS CAP HILUX 05	1
8	03-0058L	BRACKET CHASSIS CAP HILUX 05	1
9	12-0010	COVER PC FOG LIGHT	2
10	M8X25	BOLT M8 X 25	6
11	M8 FW X 22	FLAT WASHER 8MM LARGE	6
12	M8 FN	FLANGE NUT M8	4
13	M6X16 BHCS	M6 BUTTON HEAD CAP SCREW	13
14	M6 FW	M6 FLAT WASHER	15
15	M6X20	M6 X 20 BOLT	2
16	M6 FN	FLANGE NUT M6	2
17	M5X10 PSCREW	M5 X 10 PH SCREW	6
18	M5X15 PSCREW	M5 X 15 PH SCREW	8

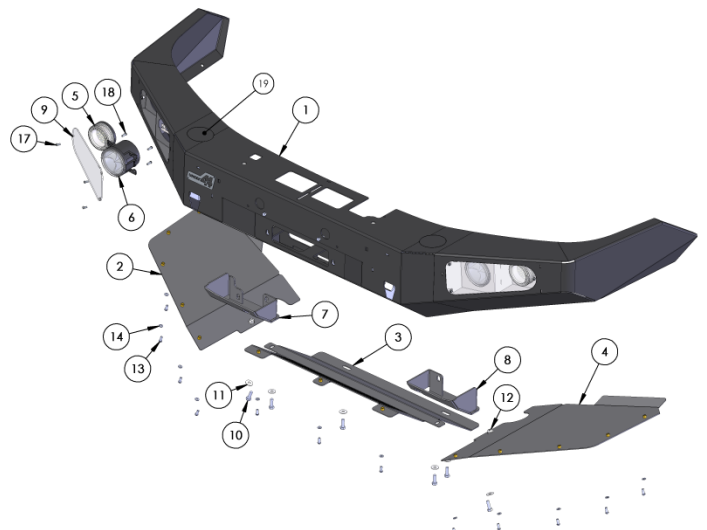


Components and parts

ITEM NO.	PART NUMBER	DESCRIPTION	QTY.
1	TH-FB-05U-ASM1	HILUX 05 WELDED ASSY	1
2	09-0016	PANEL ASSY CENTER HILUX 05	1
3	09-0018R	PANEL ASSY OUTER HILUX 05	1
4	09-0018L	PANEL ASSY OUTER HILUX 05	1
5	AUTO 8 LED	LED INDICATOR/PARKER	2
6	LED FOG LIGHT	LED FOG LIGHT	2
7	03-0058R	BRACKET CHASSIS CAP HILUX 05	1
8	03-0058L	BRACKET CHASSIS CAP HILUX 05	1
9	12-0010	COVER PC FOG LIGHT	2
10	M8X25	BOLT M8 X 25	6
11	M8 FW X 22	FLAT WASHER 8MM LARGE	6
12	M8 FN	FLANGE NUT M8	4
13	M6X16 BHCS	M6 BUTTON HEAD CAP SCREW	13
14	M6 FW	M6 FLAT WASHER	15
15	M6X20	M6 X 20 BOLT	2
16	M6 FN	FLANGE NUT M6	2
17	M5X10 PSCREW	M5 X 10 PH SCREW	6
18	M5X15 PSCREW	M5 X 15 PH SCREW	8
20	M12 SW	M12 SPRING WASHER	2
21	M12X1.75X30 SHCS	BUTTON HEAD CAP SCREW M12 X 30	2
22	05-0056	TUBE ASSY HILUX URBAN	1



ITEM NO.	PART NUMBER	DESCRIPTION	QTY.
1	TH-FB-05U-ASM1	HILUX 05 WELDED ASSY	1
2	09-0018R	PANEL ASSY OUTER HILUX 05	1
3	09-0016	PANEL ASSY CENTER HILUX 05	1
4	09-0018L	PANEL ASSY OUTER HILUX 05	1
5	AUTO 8 LED	LED INDICATOR/PARKER	2
6	LED FOG LIGHT	LED FOG LIGHT	2
7	03-0058R	BRACKET CHASSIS CAP HILUX 05	1
8	03-0058L	BRACKET CHASSIS CAP HILUX 05	1
9	12-0010	COVER PC FOG LIGHT	2
10	M8X25	BOLT M8 X 25	6
11	M8 FW X 22	FLAT WASHER 8MM LARGE	6
12	M8 FN	FLANGE NUT M8	4
13	M6X16 BHCS	M6 BUTTON HEAD CAP SCREW	13
14	M6 FW	M6 FLAT WASHER	15
15	M6X20	M6 X 20 BOLT	2
16	M6 FN	FLANGE NUT M6	2
17	M5X10 PSCREW	M5 X 10 PH SCREW	6
18	M5X15 PSCREW	M5 X 15 PH SCREW	8
19	04-0089	PLATE ASSY BUMPER PLUG	2



Step 1

Remove plastic panels under bumper, bumper, fog lights if fitted, grille and steel bumper support. Remove two front bolts from lower steel bash plate and retain. Loosen other bash plate bolts only.



Step 2

Remove headlights from vehicle. Cut supplied indicator/parker light wires in half. Locate park, indicator and earth on Toyota lights and attach wires that were cut using soldering iron or Narva 56015BL connectors. Once this is done attach female spade terminals to other end of wires. Re-fit headlights. GREEN is indicator, BROWN is parker and WHITE is earth.



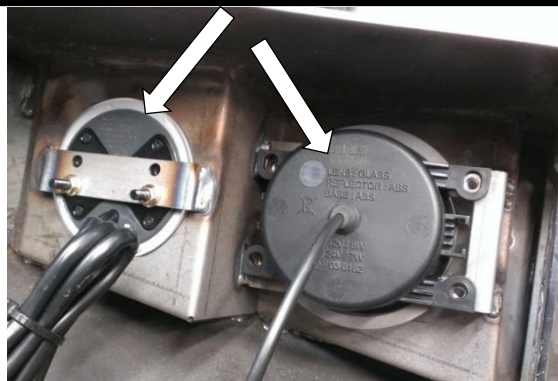
Step 3

Loosely fit impact absorbers to bar using M10 x 30 x 1.5 bolts, spring washers and flat washers. RH side shown.



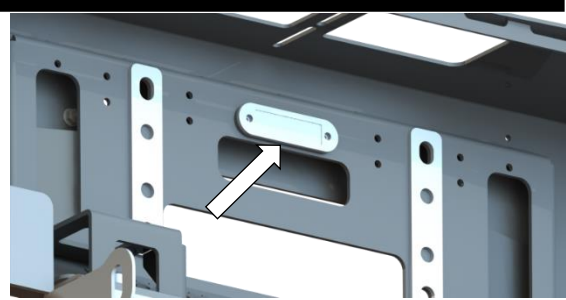
Step 4

Fit supplied fog light and park/indicator to bar. The fog lights will use the longer M5 fasteners supplied in the bar fitting kit. DO NOT USE SUPPLIED FASTENERS IN FOG LIGHT BOX. Fit center tube to bar using M12 socket head cap screws and spring washers.



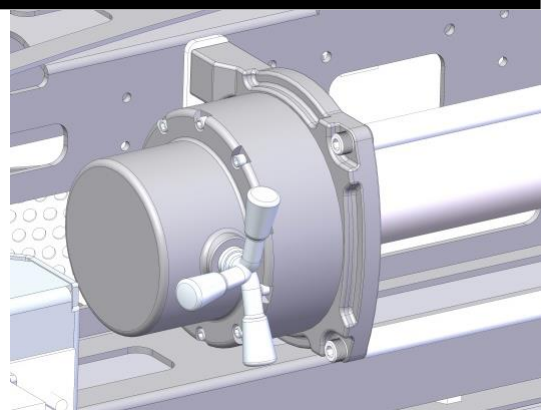
Step 5

Install optional winch light and route cable to either side of bar. Run cable through access (arrow) hole and cable tie to holes provided.



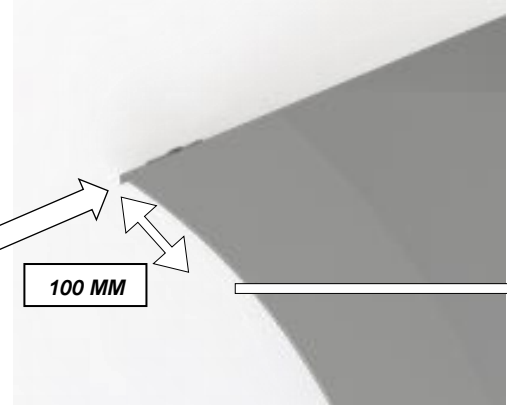
Step 6

If fitting a winch do so now. The clutch handle on most winches can be left in the original position.



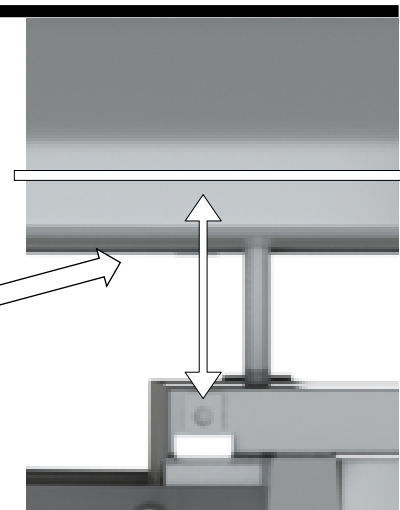
Step 7

2005-2011 bumper cut procedure. Remove bumper flares if fitted. Mark the bumper on wheel arch 100mm down from join line where it ends at the wheel arch as shown in the image. RH side shown.



Step 8

Measure up from the license plate mounting holes 125mm and mark. Run a length of masking tape above these marked points across the bumper joining them all together keeping the tape above the cut line. Try and keep the line as straight as possible.



Step 9

2005 on. If fitted with flares on bumper they can be discarded.



Step 10

2011 on bumper cutting procedure. Measure down as shown from the join line 110mm and mark. RH side shown. Flare cut will be shown later in the instructions.



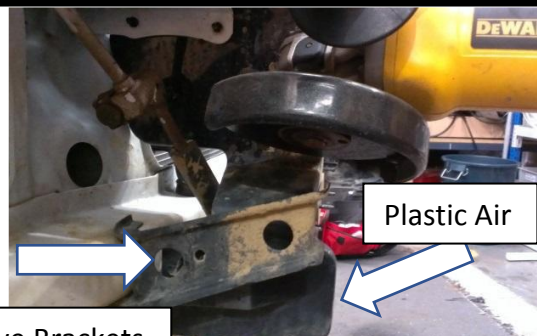
Step 11

Measure up from the air inlet (near license plate) in the bumper 30mm and mark. Join all marked positions with masking tape keeping the tape above the cut line.



Step 12

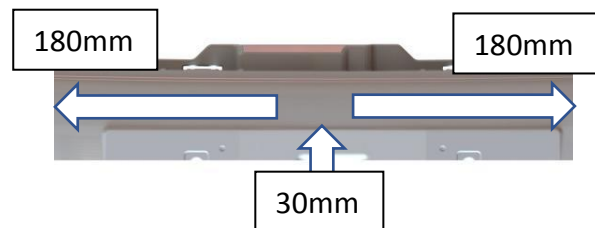
Cut air dam in grille area as shown. Remove and discard brackets as shown.



Remove Brackets

Step 13

If fitting a winch, the license plate boss will also have to be cut out. 2011 onwards shown. For 2005-2011 vehicle mark a centre point in the bumper. Measure up from the cut line 30mm. Go outwards from that centre line 180mm. Mark this rectangle and cut out.



Step 14

ALL MODELS. After de-burring fit bumper back to vehicle. After routing winch or driving light wires replace grille also.



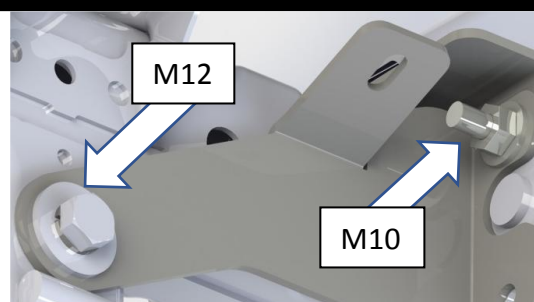
Step 15

Loosely fit bar to chassis securing to chassis studs using M10 x 1.25 nuts, spring washers and flat washers. DO NOT TIGHTEN.



Step 16

Fit chassis brace using m10 x 40 x 1.25 bolts, spring washers, 2 flat washers and M10 x 1.25 nuts to upper outer holes only. Secure brace to chassis with M12 bolt, M12 spring washer and M12 flat washer. Leave loose. Adjust bar to a satisfactory position and tighten M10 bolt and nut ONLY. RH side shown. Hint: adjust angled edge of wing parallel with bumper line.



M10-44Nm

Step 17

Complete the installation of the winch. Connect indicator/ parker units to vehicle and test. Graft fog lights to vehicle wiring if fog lights were fitted. If not use supplied wiring loom. Test all items before continuing. Check sideways adjustment of bar. If all is well tighten all the bolts securing impact absorbers to bar.



M10-44Nm

Step 18

Remove the fasteners that were fitted to the chassis studs. Place chassis protectors in place. Secure using fasteners on chassis studs and M10 x 40 x 1.25 bolts, spring washers, 2 flat washers and M10 nuts in the remaining holes. Tighten when done including the M12 chassis brace bolt. RH side shown.



M10-44Nm M12-77Nm

Step 19

Fit centre stone guard to bar using M6 button head cap screws and M6 flat washers. Secure to chassis through original bash plate using original fasteners.



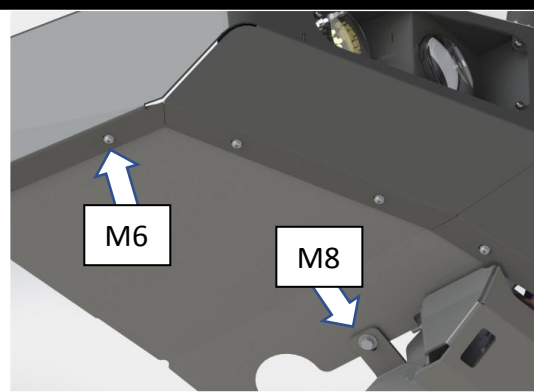
M6-9Nm

Step 20

Fit outer stone guards to bar using M6 button head cap screws with M6 flat washers and M8 bolts, flat washers and flange nuts. NOTE: It may be required to turn the wheels to fit the guards. RH side shown.

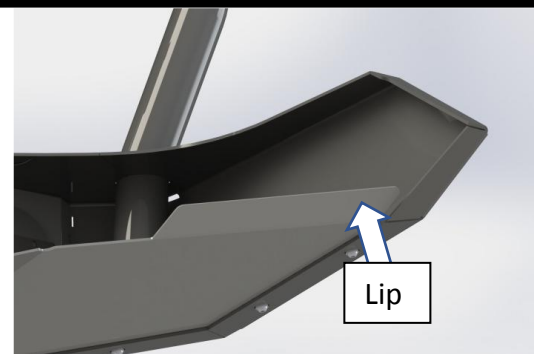


M6-9Nm M8-22Nm



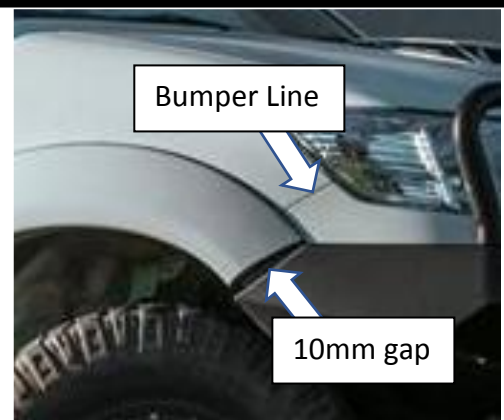
Step 21

Trim plastic wheel arch liners to suit profile of bar then place over the lip of the stone guard.



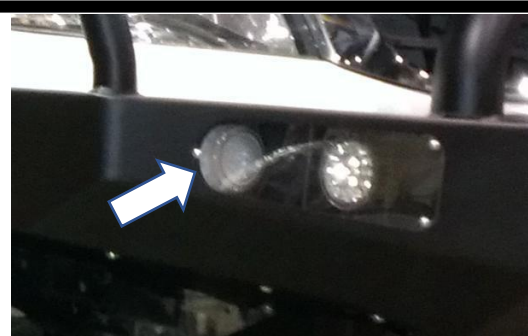
Step 22

On 2011-15 models fitted with bumper flares measure the distance from the bumper line to the angled surface on the bar. Take 10mm off this measurement and mark the flares that were fitted to the bumper. Cut flares and de-burr. Install onto bumper section.



Step 23

Fit clear covers to lights using short M5 screws. Fit flip up license plate kit if needed. Clean bar with a soft rag.



Finished Product



Revised: 15/08/2019

***Australia's Best
Off Road Products
Created... Not Cloned***

20 Gateway Drive, Carrum Downs, VIC, 3201

1800 806 952

www.uneek4x4.com.au

