

**UNEK44**  
AUSTRALIA  
OFF ROAD ACCESSORIES

**SKU: TH-S-05-ASM0**



***Fitting Instructions***

***Toyota Hilux/Vigo***

***Single, Extra and Dual Cab Sliders***

***Australia's Best Off Road Products  
Created... Not Cloned***

# **Contents**

---

<b>WHY UNEEK</b>	<b>3</b>
<b>IMPORTANT INFORMATION</b>	<b>4</b>
<b>COMPONENTS AND PARTS</b>	<b>5</b>
<b>STEP 1</b>	<b>6</b>
<b>STEP 2</b>	<b>6</b>
<b>STEP 3</b>	<b>6</b>
<b>STEP 4</b>	<b>6</b>
<b>STEP 5</b>	<b>7</b>
<b>STEP 6</b>	<b>7</b>
<b>STEP 7</b>	<b>7</b>
<b>STEP 8</b>	<b>7</b>
<b>STEP 9</b>	<b>8</b>
<b>FINISHED PRODUCT</b>	<b>9</b>

# ***Why Uneek***

---

## ***Australian Designed and Built***

All our products are designed and manufactured right here in Australia, allowing us to have better lead times and better quality control than companies manufacturing overseas. By supporting us you're supporting to grow the Australian economy and our brand.

## ***Uneek Styling***

We do not design our bars to look the same across the vehicle range. We fully develop our own product to individually suit each vehicle. We take time in designing from scratch and then test all our bars to comply with all relevant ADRs and Australian Standards.

## ***Lightweight Through Smart Engineering***

Having a steel bar doesn't mean you have to add more weight than is required to the front of your vehicle. Our engineering practises ensure we have the right protection, designed the right way to ensure protection is at its maximum and weights at its minimum.

## ***Proven Off Road***

We take our products out and test them right here in the heart of our country in our Australian conditions so we know our products can withstand anything you throw at them.

## ***Increased Approach Angles***

Our bars are designed to give you the best advantage while off road, with increased approach angles means you can tackle those tough and steep angles better than you could with the original setup or other alternatives.

## ***Warranty***

Uneek 4x4 back itself as Australia's leading steel bull bar manufacturer. This is why we provide you with the best steel bar warranty in Australia - 5 years.

# Important Information

---



## PLEASE READ BEFORE INSTALLATION.

- When installed in accordance with these instructions rock sliders do not affect the operation of the vehicles SRS airbags.
- This product must be installed exactly as per these instructions using only hardware supplied.
- Take a few moments to read instructions thoroughly before beginning work.
- In the event of damage to any bar component please contact Uneek 4x4 in regards to repair/replacement of components.
- Do not use this product for any vehicle make or model other than that specified on these instructions.
- Do not remove labels from this product.
- This product and its fixings must not be modified in any way unless stated in these fitting instructions.
- The installation of this product is recommended for trained personnel.
- These instructions are correct at time of publication. Uneek 4x4 cannot be held responsible for the impact of any changes subsequently made by the vehicle manufacturer.
- During installation it is the duty of the installer to check correct operation/clearances of all components.
- Installation time: 1 hour.
- Vehicle specific notes: A hydraulic jack will be required. Please note that the threads in the captive nut end plates are 1.5 pitch.



**EYE & EAR PROTECTION REQUIRED**



**DRILLING REQUIRED**



**TWO PERSON LIFT REQUIRED**



**TORQUE SETTING**



**CUTTING OR GRINDING REQUIRED**

### FASTENER TORQUE SETTINGS:

M6 – 9Nm (4lb ft)

M8 – 22Nm (16lb ft)

M10 – 44Nm (32lb ft)

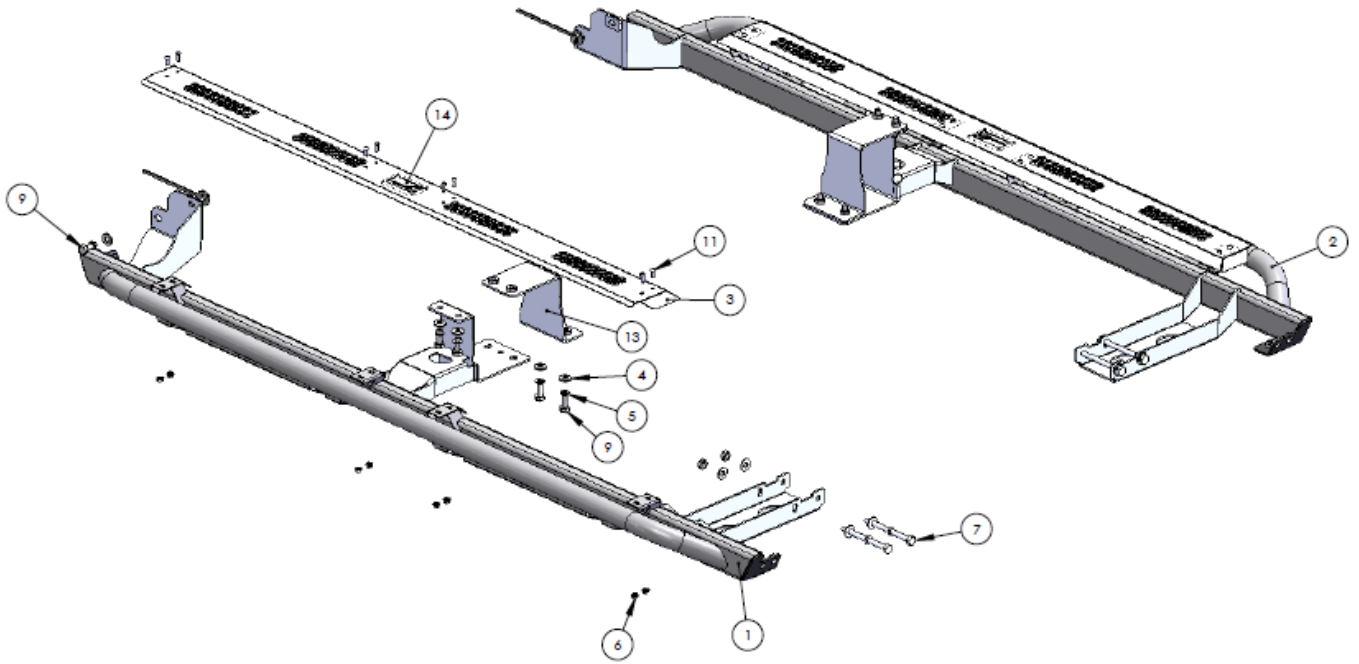
M12 – 77Nm (57lb ft)

### TOOLS REQUIRED:

Basic tool kit, hydraulic jack, 'G' clamp, drill and 10mm drill bit.

# ***Components and parts***

ITEM NO.	PART NUMBER	DESCRIPTION	QTY.
1	TH-S-05-ASM1R	HILUX 05 ON SLIDER WELDED ASSY	1
2	TH-S-05-ASM1L	HILUX 05 ON WELDED ASSY	1
3	09-0028	PANEL TREAD SLIDER HILUX 05	2
4	M10FWX25	M10 FLAT WASHER X 25MM WIDE	19
5	M10SW	M10 SPRING WASHER	15
6	M6 FN	FLANE NUT M6	16
7	M10x1.5X120	M10 X 1.5 X 120MM BOLT	4
8	04-0086	ASSY M10 ROOT NUT PLATE	2
9	M10X30	M10 X 1.5 X 30MM BOLT	10
10	M10X1.5N	M10 X 1.5 NUT	4
11	M6 x 16 BHCS	M6 x 16 BHCS z/p	16
12	Shipper 1900 x 320 x 250	Carton 1900 x 320 x 250	1
13	03-0138	BRACKET MIDDLE ASSY SLIDER HILUX 05	2
14	JK-S-10	LOGO PLATE	2



## Step 1

Remove original steps and brackets if fitted.



## Step 2

Support gearbox cross member and do one side at a time. Remove and discard two mounting bolts in area shown by arrow.



## Step 3

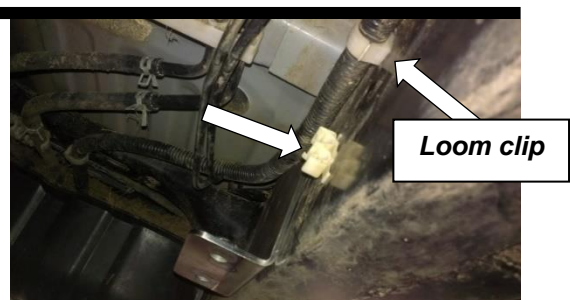
Un-bolt hand brake cable support bracket and RETAIN bolt. Attach tread plates to sliders using M6 button head cap screws and M6 flange nuts.



M6-9Nm

## Step 4

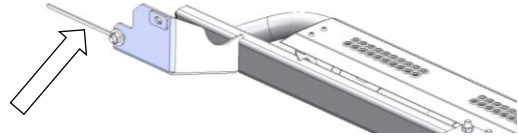
On the fuel tank side carefully un-clip the lines from the chassis (closest to original step middle mount). One wiring loom clip similar to that shown in image will have to be completely removed. With the help of another person mount the step to the vehicle and bolt loosely using M10 x 120 bolts to gearbox cross member. On single cab models ensure there is no weld slag near slider mount. If show remove slag from chassis.





## Step 5

Mount to the rear of the chassis with hand brake cable bracket and fastener removed in step 3. Attach lower point as shown using M10 nut plate (slide up through spring perch) and M10 x 30 bolt, spring washer and flat washer. Leave loose.



## Step 6

Insert middle bracket as shown. Small return fold is to sit at bottom of chassis and longer return fold to go over the top of chassis.



## Step 7

Attach top of bracket to step using M10 x 30 bolts, spring washers and flat washers. Leave loose.



## Step 8

Secure lower point of middle bracket using M10 x 30 bolts, spring washers and flat washers. Before tightening use a 'G' clamp or similar to clamp slider mount and inner mount bracket tight. Drill center point out to 10mm. Secure Using M10 x 30 bolt, spring washer, two flat washers and an M10 nut. Tighten all lower bolts and remove clamp.



M10-44Nm

## Step 9

Tighten upper middle bolts. Make sure slider is level and tighten remaining front and rear bolts. Repeat procedure for other side.



M10-44Nm





# **Finished Product**

---



Revised: 15/08/2019

***Australia's Best  
Off Road Products  
Created... Not Cloned***

20 Gateway Drive, Carrum Downs, VIC, 3201

1800 806 952

[www.uneek4x4.com.au](http://www.uneek4x4.com.au)

