

**UNEK4**  
AUSTRALIA  
OFF ROAD ACCESSORIES

**SKU: TL-FB-76C-ASM0**



## ***Fitting Instructions***

***Toyota Land Cruiser 76,78,79 Series  
Classic, Urban and Winch Bumper***

***Australia's Best Off Road Products  
Created... Not Cloned***

# **Contents**

---

<b>WHY UNEEK</b>	<b>3</b>
<b>IMPORTANT INFORMATION</b>	<b>4</b>
<b>COMPONENTS AND PARTS</b>	<b>5</b>
<b>STEP 1</b>	<b>7</b>
<b>STEP 2</b>	<b>7</b>
<b>STEP 3</b>	<b>7</b>
<b>STEP 4</b>	<b>7</b>
<b>STEP 5</b>	<b>7</b>
<b>STEP 6</b>	<b>8</b>
<b>STEP 7</b>	<b>8</b>
<b>STEP 8</b>	<b>8</b>
<b>STEP 9</b>	<b>8</b>
<b>FINISHED PRODUCT</b>	<b>10</b>

# ***Why Uneek***

---

## ***Australian Designed and Built***

All our products are designed and manufactured right here in Australia, allowing us to have better lead times and better quality control than companies manufacturing overseas. By supporting us you're supporting to grow the Australian economy and our brand.

## ***Uneek Styling***

We do not design our bars to look the same across the vehicle range. We fully develop our own product to individually suit each vehicle. We take time in designing from scratch and then test all our bars to comply with all relevant ADRs and Australian Standards.

## ***Lightweight Through Smart Engineering***

Having a steel bar doesn't mean you have to add more weight than is required to the front of your vehicle. Our engineering practises ensure we have the right protection, designed the right way to ensure protection is at its maximum and weights at its minimum.

## ***Proven Off Road***

We take our products out and test them right here in the heart of our country in our Australian conditions so we know our products can withstand anything you throw at them.

## ***Increased Approach Angles***

Our bars are designed to give you the best advantage while off road, with increased approach angles means you can tackle those tough and steep angles better than you could with the original setup or other alternatives.

## ***Warranty***

Uneek 4x4 back itself as Australia's leading steel bull bar manufacturer. This is why we provide you with the best steel bar warranty in Australia - 5 years.

# Important Information

---



## PLEASE READ BEFORE INSTALLATION.

- When installed in accordance with these instructions, the front protection bar does not affect the operation of the vehicles SRS airbags.
- This product must be installed exactly as per these instructions using only hardware supplied.
- Take a few moments to read instructions thoroughly before beginning work.
- In the event of damage to any bar component please contact Uneek 4x4 in regards to repair/replacement of components.
- Do not use this product for any vehicle make or model other than that specified on these instructions.
- Do not remove labels from this product.
- This product and its fixings must not be modified in any way unless stated in these fitting instructions.
- The installation of this product is recommended for trained personnel.
- These instructions are correct at time of publication. Uneek 4x4 cannot be held responsible for the impact of any changes subsequently made by the vehicle manufacturer.
- During installation it is the duty of the installer to check correct operation/clearances of all components.
- Supplied tow points are designed as tow points only. Use in a recovery operation will be at operator's risk.
- Installation time: 2-3 hours.
- Vehicle specific notes: A flip up license plate kit may be required. Optional Narva 90862 license plate light.



### EYE & EAR PROTECTION REQUIRED



### DRILLING REQUIRED



### TWO PERSON LIFT REQUIRED



### TORQUE SETTING



### CUTTING OR GRINDING REQUIRED

#### FASTENER TORQUE SETTINGS:

M6 – 9Nm (4lb ft)

M8 – 22Nm (16lb ft)

M10 – 44Nm (32lb ft)

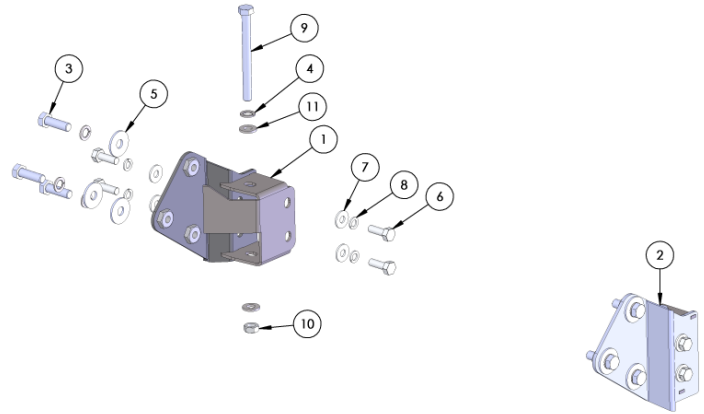
M12 – 77Nm (57lb ft)

#### TOOLS REQUIRED:

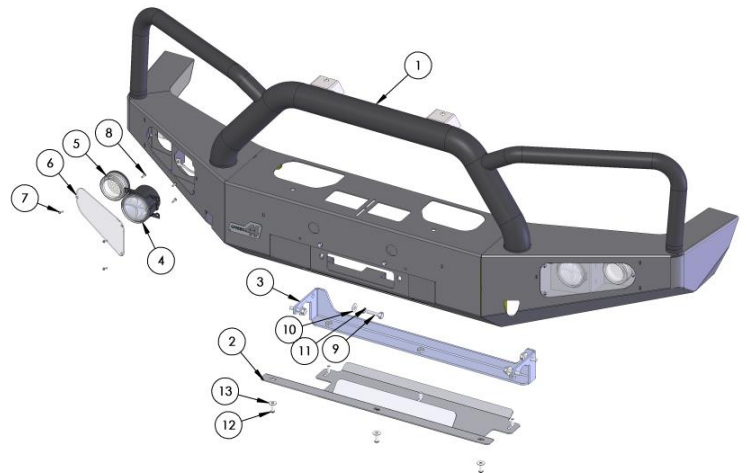
Basic tool kit, soldering iron or electrical in-line connectors, male and female spade terminals.

# Components and parts

ITEM NO.	PART NUMBER	DESCRIPTION	QTY.
1	03-0224R	BRACKET ASSY IMPACT 76	1
2	03-0224L	BRACKET ASSY IMPACT 76	1
3	M12X40X1.75	M12 X 40MM X 1.75 BOLT	6
4	M12 SW	M12 SPRING WASHER	8
5	M12 FW X 37	M12 FLAT WASHER X 37	6
6	M10X30X1.25	M10 X 1.25 X 30MM BOLT	8
7	M10FWX25	M10 FLAT WASHER X 25MM WIDE	8
8	M10SW	M10 SPRING WASHER	8
9	M12X130X1.75	M12 X 130MM X 1.75 BOLT	2
10	M12X1.17N	M12 X 1.75 NUT	2
11	M12 FW	M12 FLAT WASHER STANDARD	4

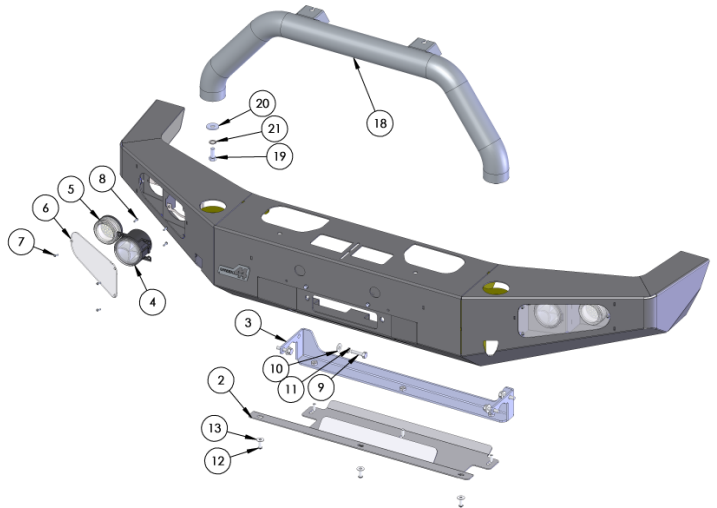


ITEM NO.	PART NUMBER	DESCRIPTION	QTY.
1	TL-FB-76C-ASM1	76 CLASSIC WELDED ASSY	1
2	09-0068	PANEL ASSY 76 FRONT	1
3	03-0230	BRACKET ASSY 76 RADIATOR	1
4	CARWAY LED	FOG DRL LIGHT	2
5	AUTO 8 LED	LED INDICATOR/PARKER	2
6	I2-0010	COVER PC FOG LIGHT	2
7	M5X10 PSCREW	M5 X 10 PH SCREW	6
8	M5X15 PSCREW	M5 X 15 PH SCREW	8
9	M10X40X1.25	BOLT M10 X 40	4
10	M10FWX25	M10 FLAT WASHER X 25MM WIDE	4
11	M10SW	M10 SPRING WASHER	4
12	M8X25 BHCS	M8 BUTTON HEAD CAP SCREW	6
13	M8 FW X 22	FLAT WASHER 8MM LARGE	6
14	M6X20	M6 X 20 BOLT	2
15	M6 FW	M6 FLAT WASHER	2
16	M6 FN	FLANGE NUT M6	2

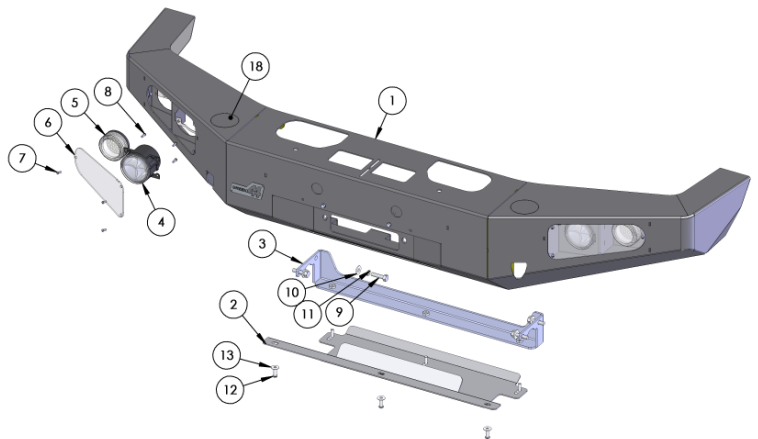


# Components and parts

ITEM NO.	PART NUMBER	DESCRIPTION	QTY.
1	TL-FB-76U-ASM1	76 URBAN WELDED ASSY	1
2	09-0068	PANEL ASSY 76 FRONT	1
3	03-0230	BRACKET ASSY 76 RADIATOR	1
4	CARWAY LED	FOG DRL LIGHT	2
5	AUTO 8 LED	LED INDICATOR/PARKER	2
6	12-0010	COVER PC FOG LIGHT	2
7	M5X10 PSCREW	M5 X 10 PH SCREW	6
8	M5X15 PSCREW	M5 X 15 PH SCREW	8
9	M10X40X1.25	BOLT M10 X 40	4
10	M10FWX25	M10 FLAT WASHER X 25MM WIDE	4
11	M10SW	M10 SPRING WASHER	4
12	M8X25 BHCS	M8 BUTTON HEAD CAP SCREW	6
13	M8 FW X 22	FLAT WASHER 8MM LARGE	6
14	M6X20	M6 X 20 BOLT	2
15	M6 FW	M6 FLAT WASHER	2
16	M6 FN	FLANGE NUT M6	2
18	05-0078	TUBE ASSY LC70 URBAN	1
19	M12X30X1.75	M12 X 30MM X 1.75 BOLT	2
20	M12 FW X 37	M12 FLAT WASHER X 37	2
21	M12 SW	M12 SPRING WASHER	2



ITEM NO.	PART NUMBER	DESCRIPTION	QTY.
1	TL-FB-76U-ASM1	76 URBAN WELDED ASSY	1
2	09-0068	PANEL ASSY 76 FRONT	1
3	03-0230	BRACKET ASSY 76 RADIATOR	1
4	CARWAY LED	FOG DRL LIGHT	2
5	AUTO 8 LED	LED INDICATOR/PARKER	2
6	12-0010	COVER PC FOG LIGHT	2
7	M5X10 PSCREW	M5 X 10 PH SCREW	6
8	M5X15 PSCREW	M5 X 15 PH SCREW	8
9	M10X40X1.25	BOLT M10 X 40	4
10	M10FWX25	M10 FLAT WASHER X 25MM WIDE	4
11	M10SW	M10 SPRING WASHER	4
12	M8X25 BHCS	M8 BUTTON HEAD CAP SCREW	6
13	M8 FW X 22	FLAT WASHER 8MM LARGE	6
14	M6X20	M6 X 20 BOLT	2
15	M6 FW	M6 FLAT WASHER	2
16	M6 FN	FLANGE NUT M6	2
18	04-0089	PLATE ASSY BUMPER PLUG	2





## Step 1

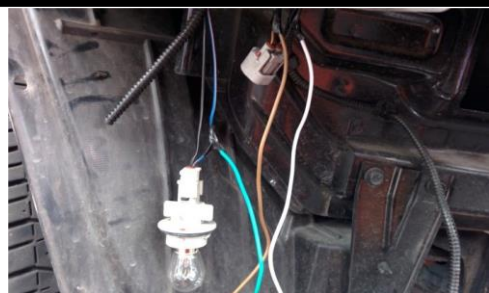
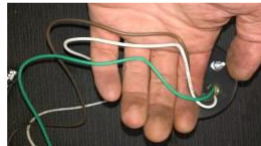
Remove bumper and fog lights if fitted.



## Step 2

Cut supplied indicator/parker light wires in half. Locate park, indicator and earth on vehicle lights and attach wires that were cut using soldering iron or Narva 56015BL connectors.

Once this is done attached female spade terminals to other end of wires. Re-fit headlights.



## Step 3

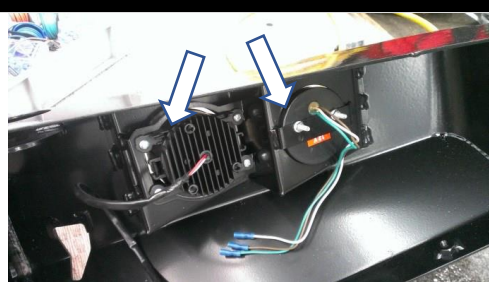
Remove tow hooks and plastic stone guard from vehicle. Retain tow hooks.



## Step 4

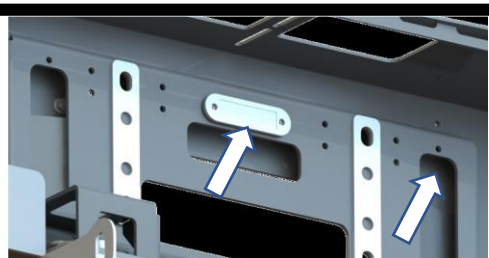
Fit supplied fog light and park/indicator to bar. The fog lights will use the longer M5 fasteners supplied in the bar fitting kit. DO NOT USE SUPPLIED FASTENERS IN FOG LIGHT BOX. Fit centre tube to bar using M12 socket head cap screws and spring washers.

**HINT:** Cut the plug off the original fog light and solder to new fog light.



## Step 5

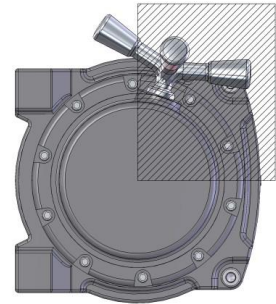
Install optional winch light and rout cable to either side of bar. Run cable through access (arrow) hole and cable tie to holes provided. If fitting an Urban bar fit the centre tube now.



---

## Step 6

If fitting a winch do so now. The clutch handle will need to be positioned in an area as shown.



---

## Step 7

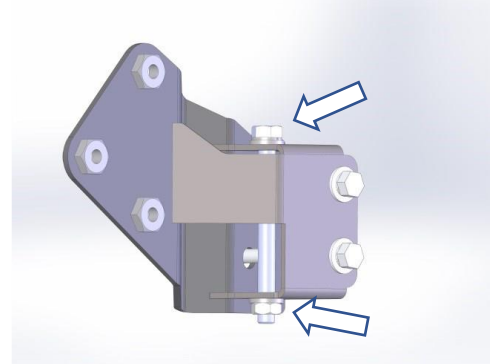
Install chassis mounts to vehicle. Secure loosely using M10 x 30 fine thread bolts.



---

## Step 8

Place long bolt, M12 spring washer and small M12 flat washer through centre of mount and through chassis. Place M12 x 1.75 nut and small M12 flat washer at bottom. Tighten all bolts except inner lower M10's.



M12-77Nm M10-44Nm

---

## Step 9

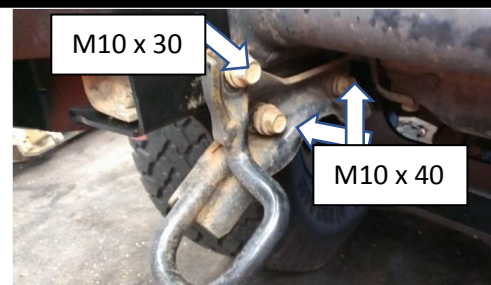
Place stone guard mount on chassis rail as shown. Remove lower inner M10 bolts to make way for fitting tow hooks.





## Step 10

Fit tow hooks back to vehicle using M10 x 40 x 1.25 bolts, spring washers and flat washers through stone guard mount and into chassis. Re-fit M10 x 30 bolt back to impact absorber.



M10-44Nm

## Step 11

With the help of another person fit bar to vehicle using M12 x 40 bolts, spring washers and large flat washers. Adjust bar so there is a 10-15mm gap as shown by arrow and end of bar meets wheel arch. Tighten all bolts.



M12-77Nm

## Step 12

Complete the wiring of the winch if fitted and bar lights. If vehicle does not have factory fog lights use wiring loom supplied. Test lights and fit clear covers. Do not over tighten cover screws.



## Step 13

Fit stone guard to vehicle using M8 button head cap screws and M8 flat washers. Attach license plate to vehicle and wipe down bar.



M8-22Nm

# ***Finished Product***

---



Revised: 23/08/2019

***Australia's Best  
Off Road Products  
Created... Not Cloned***

20 Gateway Drive, Carrum Downs, VIC, 3201

1800 806 952

[www.uneek4x4.com.au](http://www.uneek4x4.com.au)

