

UNEK44
AUSTRALIA
OFF ROAD ACCESSORIES

SKU: WK2-TW-ASM0



Fitting Instructions

Jeep WK2 Grand Cherokee 2011-2015

Tow Hooks

***Australia's Best Off Road Products
Created... Not Cloned***

Contents

WHY UNEEK	3
IMPORTANT INFORMATION	4
COMPONENTS AND PARTS	5
STEP 1	6
STEP 2	6
STEP 3	6
STEP 4	6
STEP 5	7
FINISHED PRODUCT	8

Why Uneek

Australian Designed and Built

All our products are designed and manufactured right here in Australia, allowing us to have better lead times and better quality control than companies manufacturing overseas. By supporting us you're supporting to grow the Australian economy and our brand.

Uneek Styling

We do not design our bars to look the same across the vehicle range. We fully develop our own product to individually suit each vehicle. We take time in designing from scratch and then test all our bars to comply with all relevant ADRs and Australian Standards.

Lightweight Through Smart Engineering

Having a steel bar doesn't mean you have to add more weight than is required to the front of your vehicle. Our engineering practises ensure we have the right protection, designed the right way to ensure protection is at its maximum and weights at its minimum.

Proven Off Road

We take our products out and test them right here in the heart of our country in our Australian conditions so we know our products can withstand anything you throw at them.

Increased Approach Angles

Our bars are designed to give you the best advantage while off road, with increased approach angles means you can tackle those tough and steep angles better than you could with the original setup or other alternatives.

Warranty

Uneek 4x4 back itself as Australia's leading steel bull bar manufacturer. This is why we provide you with the best steel bar warranty in Australia - 5 years.

Important Information



PLEASE READ BEFORE INSTALLATION.

- This product must be installed exactly as per these instructions using only hardware supplied.
- Take a few moments to read instructions thoroughly before beginning work.
- In the event of damage to any component please contact Uneek 4x4 in regards to repair/replacement of components.
- Do not use this product for any vehicle make or model other than that specified on these instructions.
- This product and its fixings must not be modified in any way unless stated in these fitting instructions.
- These instructions are correct at time of publication. Uneek 4x4 cannot be held responsible for the impact of any changes subsequently made by the vehicle manufacturer.
- During installation it is the duty of the installer to check correct operation/clearances of all components.
- Supplied tow points are designed as tow points only. Use in a recovery operation will be at operator's risk.
- These tow points have been rated to **3,000kg each**. Always use a bridle strap to spread the load during a pull.
- Installation time: 1 hour.



EYE & EAR PROTECTION REQUIRED



DRILLING REQUIRED



TWO PERSON LIFT REQUIRED



TORQUE SETTING



CUTTING OR GRINDING REQUIRED

FASTENER TORQUE SETTINGS:

M6 – 9Nm (4lb ft)

M8 – 22Nm (16lb ft)

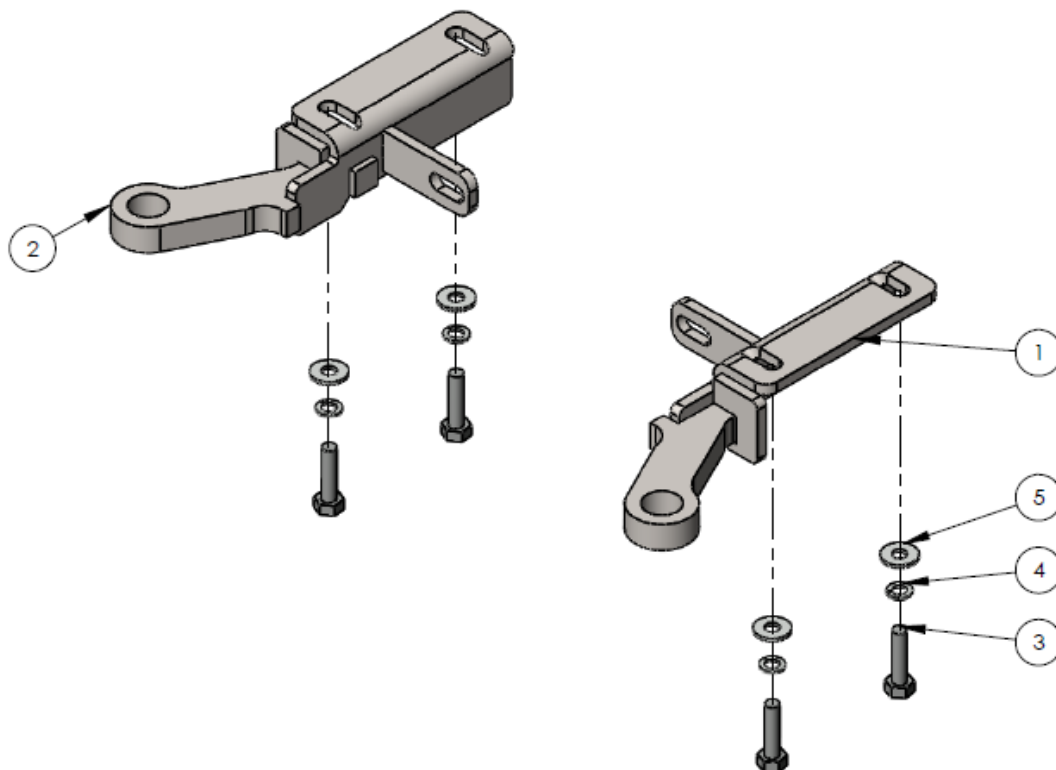
M10 – 44Nm (32lb ft)

M12 – 77Nm (57lb ft)

TOOLS REQUIRED: Basic tool kit.

Components and parts

ITEM NO.	PART NUMBER	DESCRIPTION	QTY.
1	WK2-TW-ASM1R	TOW HOOK	1
2	WK2-TW-ASM1L	TOW HOOK	1
3	M10X40X1.75	BOLT M10 X 40	4
4	M10SW	M10 SPRING WASHER	4
5	M10FWX25	M10 FLAT WASHER X 25MM WIDE	4



Step 1

Ensure all contents are accounted for and remove the lower air damn. This can be done by removing 7 quarter turn plastic plugs underneath the air damn. Note 2 are up inside the air damn. Note 2 are up inside the air damn.



Step 2

Pull the air damn away from the bumper. Don't be scared to use a little bit of force.



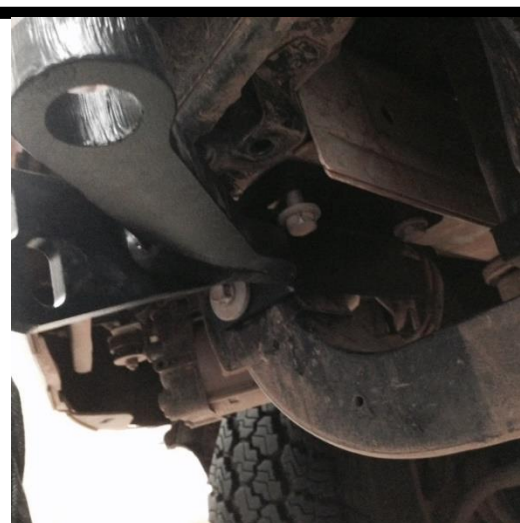
Step 3

Remove factory tow hook if fitted.



Step 4

Fit both tow hooks on the chassis using M 10 hardware plus factory M8 bolt on the side. Torque all bolts.



Step 5

Pop out tow point access holes in bumper air damn and then re fit bumper air damn with new mounts exposed.



Finished Product



Revised: 31/07/2019

***Australia's Best
Off Road Products
Created... Not Cloned***

20 Gateway Drive, Carrum Downs, VIC, 3201

1800 806 952

www.uneek4x4.com.au

