

UNEK4
AUSTRALIA

SKU: FR-RP-ASM0



Fitting Instructions
Ford Ranger
Recovery Points

***Australia's Best Off Road Products
Created... Not Cloned***

Contents

<i>WHY UNEEK</i>	<i>3</i>
<i>IMPORTANT INFORMATION</i>	<i>4</i>
<i>COMPONENTS AND PARTS</i>	<i>5</i>
<i>STEP 1</i>	<i>6</i>
<i>STEP 2</i>	<i>6</i>
<i>STEP 3</i>	<i>7</i>
<i>STEP 4</i>	<i>7</i>
<i>STEP 5</i>	<i>8</i>

Why Uneek

Australian Designed and Built

All our products are designed and manufactured right here in Australia, allowing us to have better lead times and better quality control than companies manufacturing overseas. By supporting us you're supporting to grow the Australian economy and our brand.

Uneek Styling

We do not design our bars to look the same across the vehicle range. We fully develop our own product to individually suit each vehicle. We take time in designing from scratch and then test all our bars to comply with all relevant ADRs and Australian Standards.

Lightweight Through Smart Engineering

Having a steel bar doesn't mean you have to add more weight than is required to the front of your vehicle. Our engineering practises ensure we have the right protection, designed the right way to ensure protection is at its maximum and weights at its minimum.

Proven Off Road

We take our products out and test them right here in the heart of our country in our Australian conditions so we know our products can withstand anything you throw at them.

Increased Approach Angles

Our bars are designed to give you the best advantage while off road, with increased approach angles means you can tackle those tough and steep angles better than you could with the original setup or other alternatives.

Warranty

Uneek 4x4 backs itself as Australia's leading steel bull bar manufacturer. This is why we provide you with the best steel bar warranty in Australia - 5 years.

Important Information



PLEASE READ BEFORE INSTALLATION.

- This product must be installed exactly as per these instructions using only hardware supplied.
- Take a few moments to read instructions thoroughly before beginning work.
- In the event of damage to any component please contact Uneek 4x4 in regards to repair/replacement of components.
- Do not use this product for any vehicle make or model other than that specified on these instructions.
- Do not remove labels from this product.
- This product and its fixings must not be modified in any way unless stated in these fitting instructions.
- The installation of this product is recommended for trained personnel.
- These instructions are correct at time of publication. Uneek 4x4 cannot be held responsible for the impact of any changes subsequently made by the vehicle manufacturer.
- During installation it is the duty of the installer to check correct operation/clearances of all components.



EYE & EAR PROTECTION REQUIRED



DRILLING REQUIRED



TWO PERSON LIFT REQUIRED



TORQUE SETTING



CUTTING OR GRINDING REQUIRED

FASTENER TORQUE SETTINGS:

M6 – 9Nm (4lb ft)

M8 – 22Nm (16lb ft)

M10 – 44Nm (32lb ft)

M12 – 77Nm (57lb ft)

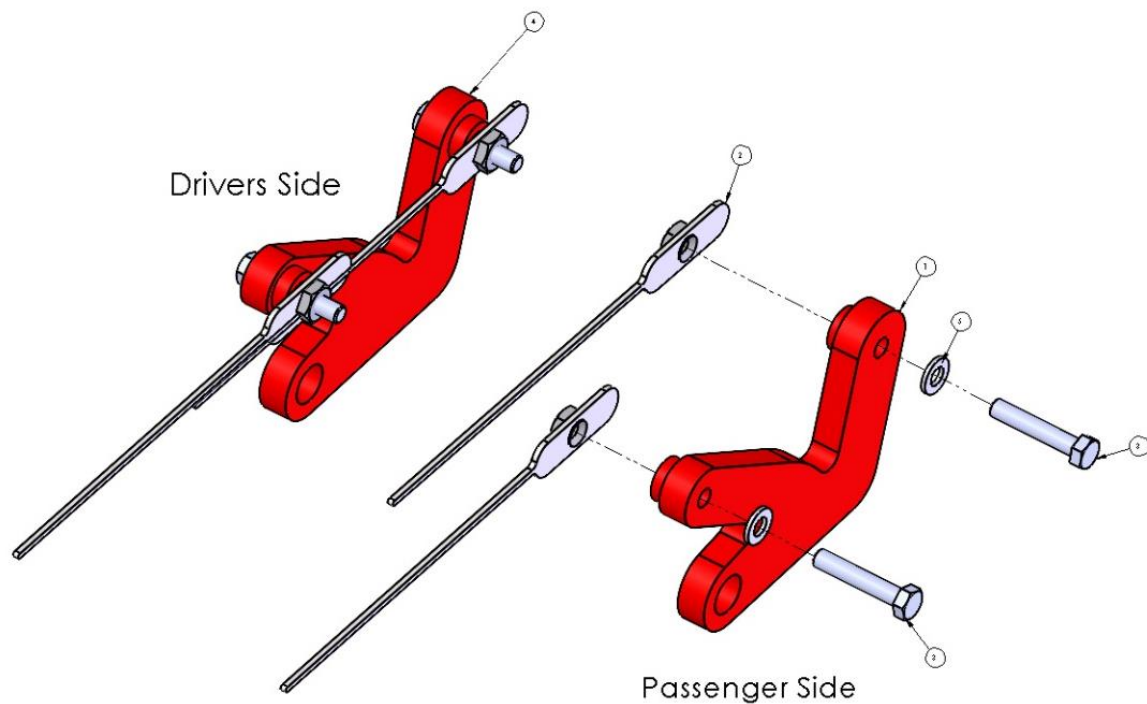
TOOLS REQUIRED:

BASIC TOOL KIT

Components and parts

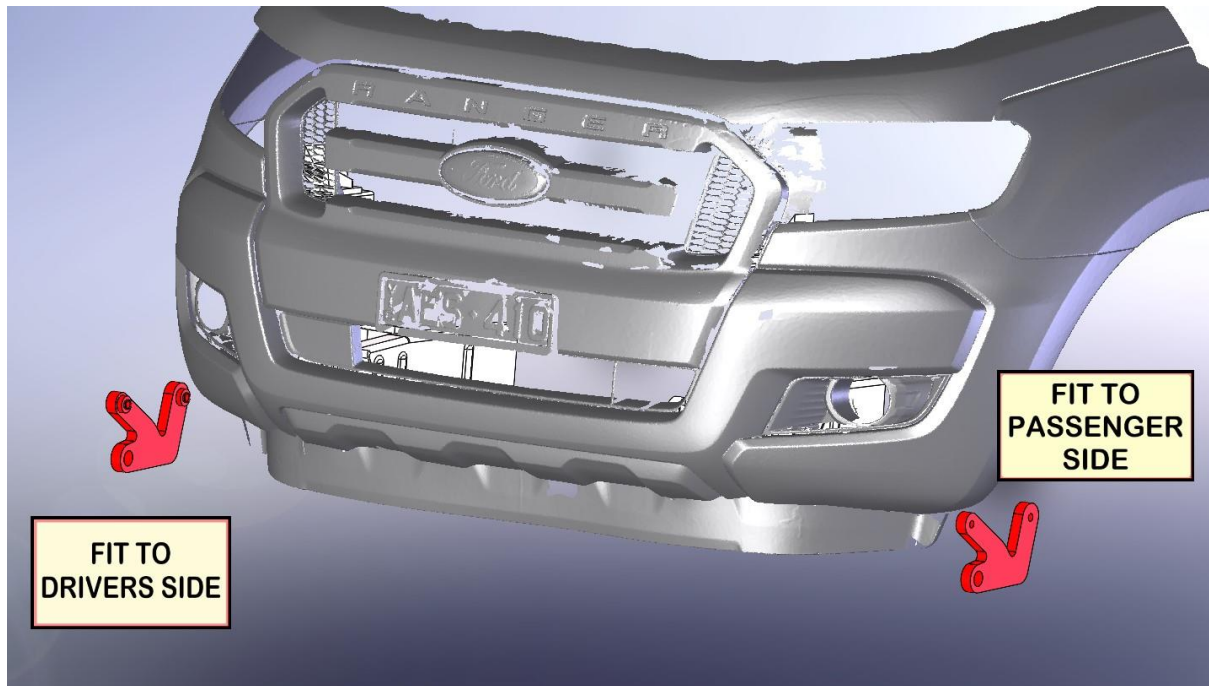
The Ranger Recovery point is made from 20mm thick Australian steel. The recovery points are rated to 3500Kg each.

ITEM NO.	PART NUMBER	Description	QTY.
1	04-0248L	Recovery Plate ASSY Passenger Side	1
2	04-0252	NUT PLATE ASSY M12 RECOVERY	4
3	M12X65X1.75	M12 X 65MM X 1.75 BOLT	4
4	04-0248R	Recovery Plate Drivers Side	1
5	M12 HD WASHER	M12 HD WASHER	4



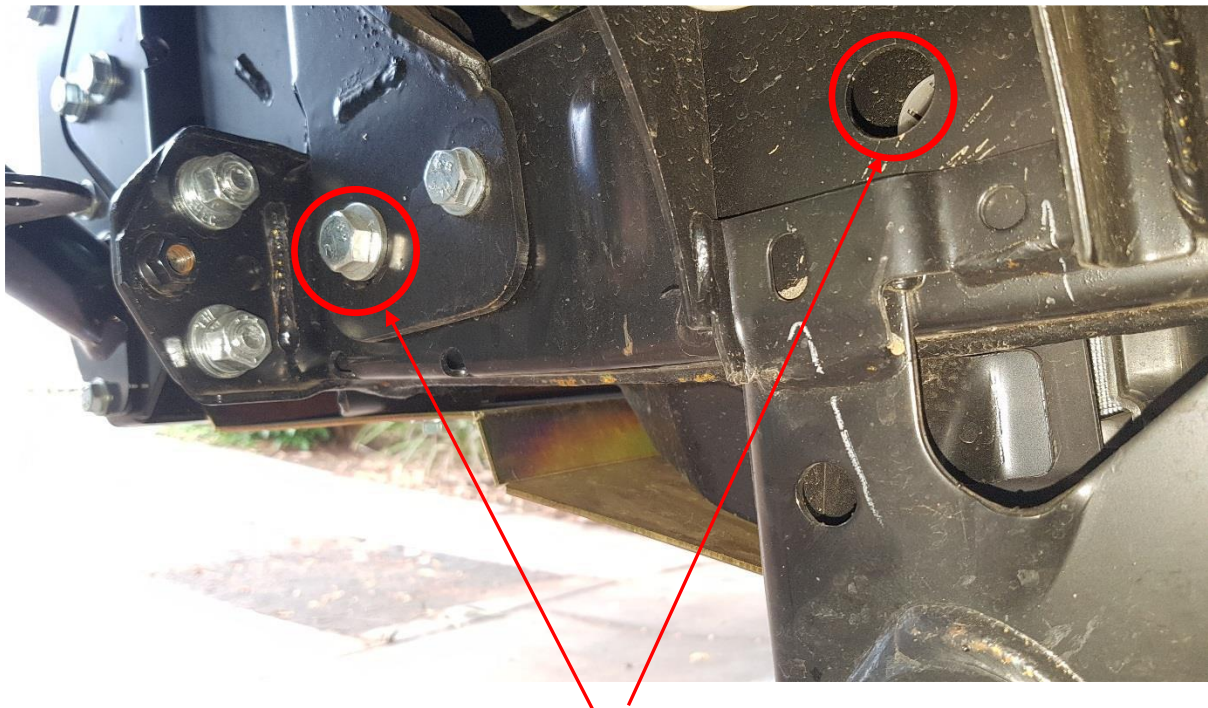
Step 1

Ensure the drivers side bracket is fitted to the drivers side of the car and vice versa.



Step 2

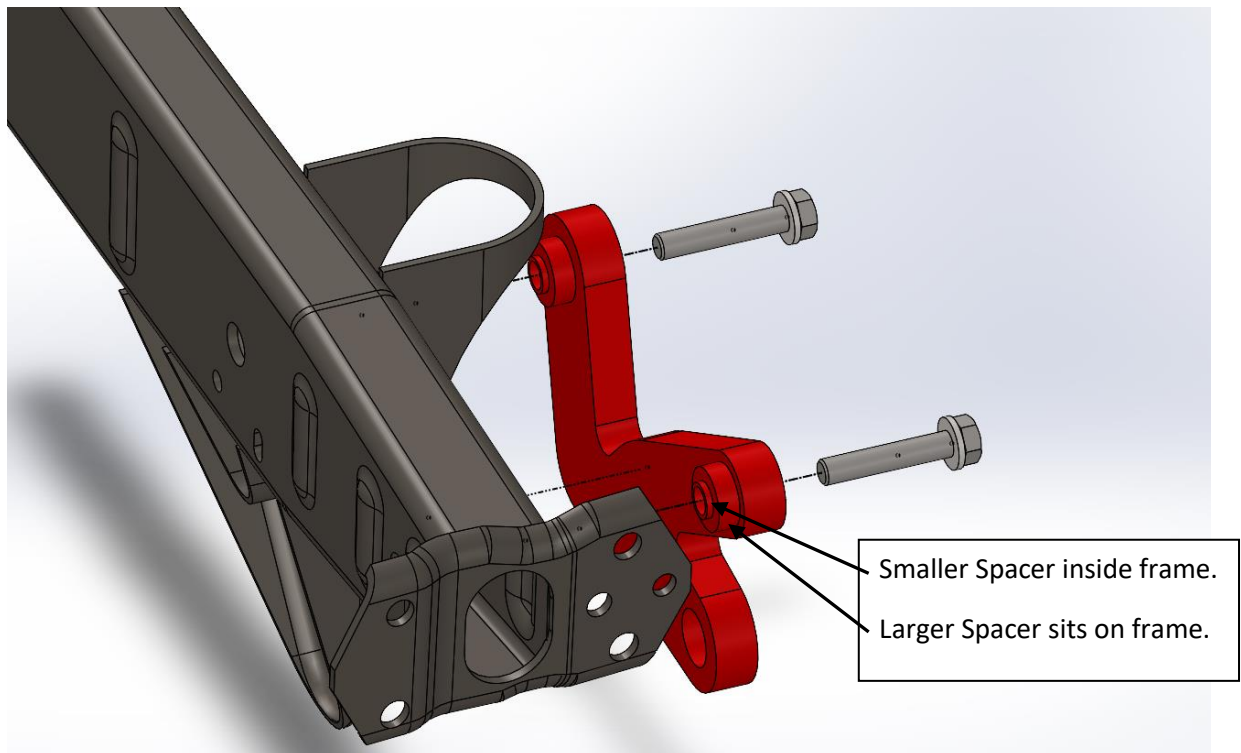
Passenger side is shown



These holes in the frame are where the recovery points bolt through.

Step 3

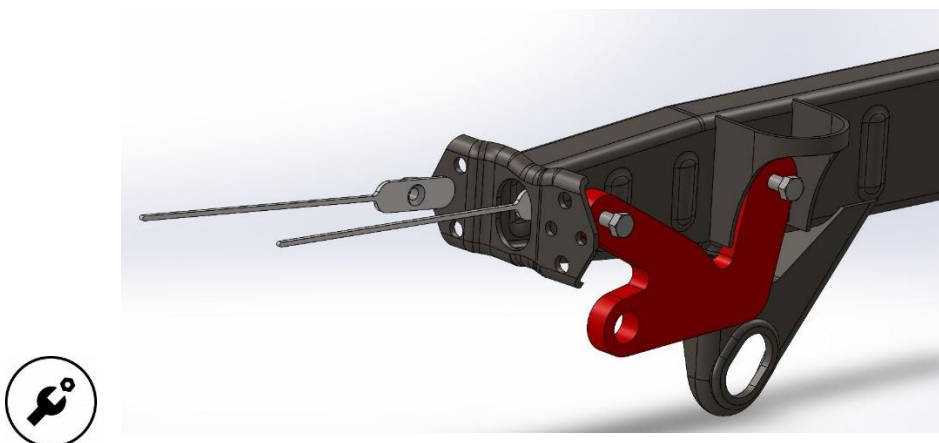
When fitting the recovery points the smaller locating spacer must fit inside the holes in the chassis rail. The larger spacers sit on the frame and allow the recovery points clearance.



Step 4

M12 x 65 bolts go into M12 flat washer and then into the holes in chassis onto nut plates. The nut plates are inserted into the chassis rail. Ensure to snap off nut plate skewers when the bolts are torqued to the correct setting (77Nm).

HINT: Hold nut plate that sits the furthest back with a pair of vice grips whilst fitting bolt.



Step 5

Repeat the Process for the Drivers side.

Ensure that the spacers fit inside the holes in chassis rails. Failure to do so may cause incorrect loading and part failure!

Revised: 16/07/2021

***Australias Best
Off Road Products
Created... Not Cloned***

20 Gateway Drive, Carrum Downs, VIC, 3201

1300 806 952

www.uneek4x4.com.au

